

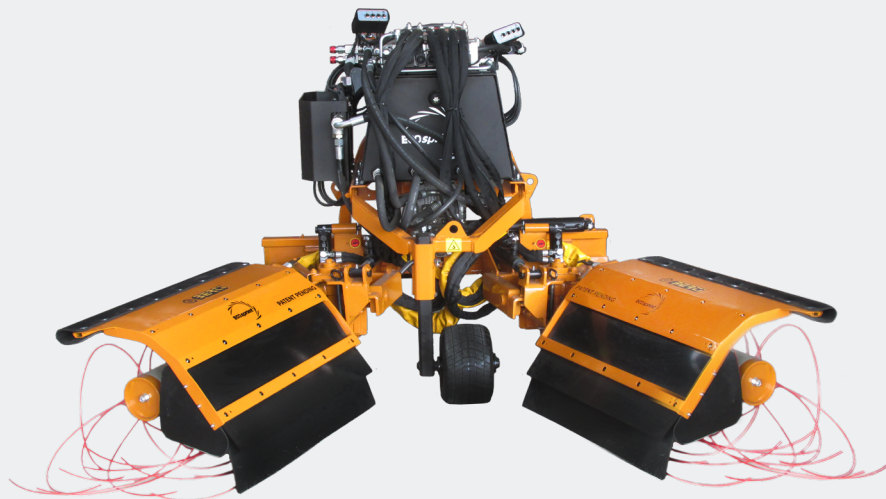
# INTER-ROW WEEDERS



# ECOSPRINT

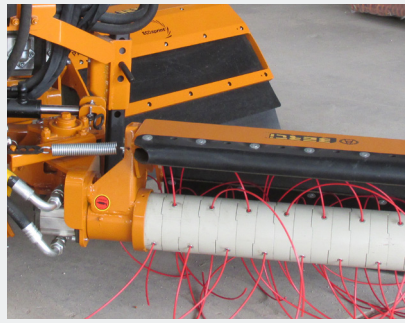
40 - 100 HP

Hydraulic inter-row weed mower to replace spraying. Patented rotor design to prevent any damage to vines or plants with quick nylon replacement. Single or double row models. Available on 3-point linkage frame or mounted to TFB-Y.





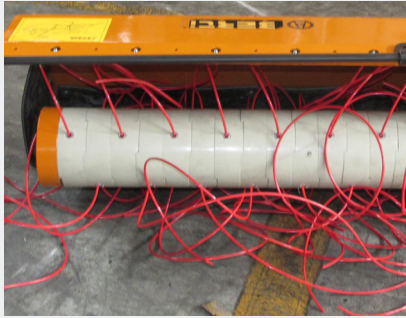
Tilt and height adjustment of head



Mechanical spring loaded head



Independent hydraulic system



Patented wire-spools



Hydraulic side shift



Height adjustable wheels



## Features:

- Efficient inter-row weeding without sprays
- Patented rotor which doesn't damage plants or vines
- Fast forward speed
- Easy cord replacement
- Independent tractor mounted
- Single side (RH) independent frame with category one/two linkage
- Three way head adjustment
- Height adjustable support wheels
- Hydraulic side shift
- Hydraulic height adjustment
- Hydraulic tilt adjustment
- Mechanical spring for in / out head movement
- 750mm long mower head
- Independent hydraulic system with twin pump and oil tank
- Hydraulic controls (three functions)



### OPTIONS:

- Central mount
- Chains in lieu of front flaps
- Hydraulic offset
- Set of heavy duty riding skids
- Set of rear castoring wheels



	cm	cm	HP	kg	Nr
<b>Ecosprint 90/140</b>	75	90 140	40 - 100	470	16
<b>Ecosprint 140/240</b>	75	140 240	50 - 100	510	16
<b>Ecosprint-D 180/280</b>	75 x 2	90 90 140 140	50 - 100	670	16 + 16
<b>Ecosprint-D 230/350</b>	75 x 2	115 115 175 175	50 - 100	710	16 + 16



CALL FARMGARD 24 HOURS  
**0800 FARMGARD**



EMAIL US FOR MORE INFO  
**sales@farmgard.co.nz**



DOWNLOAD A FREE INFO PACK OR BROCHURE  
**farmgard.co.nz**