

**FARMGARD**  
ROBUST MACHINERY THAT WORKS

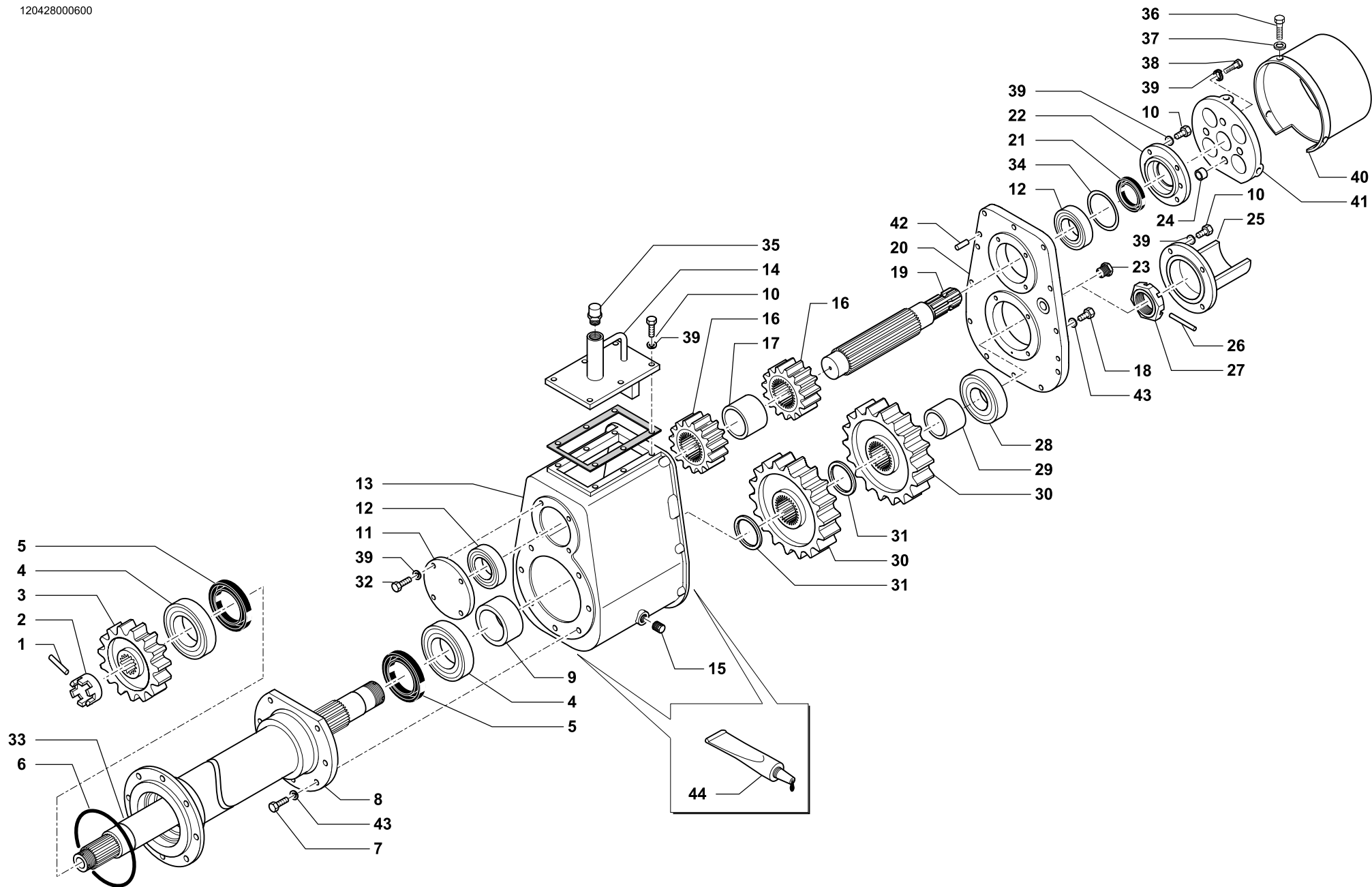


# TIGER 260P TIGER 260PF

**CELLI SPARE PARTS REFERENCE GUIDE**

**FOLDING ROTARY TILLER**





SCATOLA CAMBIO 2 VELOCITÀ 1000 G/M • 2 SPEED GEARBOX  
 GETRIEBEGEHAUSE 2 GESCHW. • BÔITE 2 VITESSES



|      |               |      |                |
|------|---------------|------|----------------|
| Tav. | <b>118444</b> | Rev. | <b>00 0201</b> |
| Tab. |               |      |                |
| Taf. |               |      |                |



SCATOLA CAMBIO 2 VELOCITÀ 1000 G/M • 2 SPEED GEARBOX  
GETRIEBEGEHAUSE 2 GESCHW. • BÔITE 2 VITESSES

Tav.  
Tab.  
Taf. **118444**

Rev. **00 0201**

| RIF.       | N. CODICE | DENOMINAZIONE                       | DENOMINATION | BEZEICHNUNG   | DENOMINATION   |
|------------|-----------|-------------------------------------|--------------|---------------|----------------|
| 1          | 013034    | Spina elastica                      | Pin          | Stift         | Goupille       |
| 2          | 423713    | Dado corona                         | Nut          | Mutter        | Ecrou          |
| 3          | 422647    | Ingranaggio Z 18                    | Gear         | Zanhrad       | Engrenage      |
| 4          | 003132S   | Cuscinetto                          | Bearing      | Kugellager    | Roulement      |
| 5          | 007151    | Paraolio                            | Oil seal     | Simmerring    | Joint d' huile |
| 6          | 007154    | Guarnizione OR                      | Gasket       | Dichtring     | Joint          |
| 7          | 014382    | Vite                                | Screw        | Schraube      | Vis            |
| <b>420</b> | 8 461360  | Distanziale                         | Spacer       | Distanzstueck | Entretoise     |
| <b>470</b> | 461361    | Distanziale                         | Spacer       | Distanzstueck | Entretoise     |
| <b>520</b> | 461362    | Distanziale                         | Spacer       | Distanzstueck | Entretoise     |
| 9          | 422563    | Distanziale                         | Spacer       | Distanzstueck | Entretoise     |
| 10         | 014205    | Vite                                | Screw        | Schraube      | Vis            |
| 11         | 422550    | Coperchio                           | Cover        | Deckel        | Couvercle      |
| 12         | 003145    | Cuscinetto                          | Bearing      | Kugellager    | Roulement      |
| 13         | 462150    | Scatola cambio                      | Housing      | Gehäuse       | Bôte           |
| 14         | 421768    | Coperchio                           | Cover        | Deckel        | Couvercle      |
| 15         | 022018    | Tappo                               | Plug         | Verschluss    | Bouchon        |
| 16         | 423285    | Ingranaggio Z 13                    | Gear         | Zanhrad       | Engrenage      |
|            | 423270    | Ingranaggio Z 14 (standard fresa)   | Gear         | Zanhrad       | Engrenage      |
|            | 423271    | Ingranaggio Z 15 (standard fresa)   | Gear         | Zanhrad       | Engrenage      |
|            | 423268    | Ingranaggio Z 16                    | Gear         | Zanhrad       | Engrenage      |
|            | 423274    | Ingranaggio Z 17 (standard frangor) | Gear         | Zanhrad       | Engrenage      |
|            | 423275    | Ingranaggio Z 18 (standard frangor) | Gear         | Zanhrad       | Engrenage      |
|            | 423278    | Ingranaggio Z 19                    | Gear         | Zanhrad       | Engrenage      |
|            | 423280    | Ingranaggio Z 20                    | Gear         | Zanhrad       | Engrenage      |
| 17         | 423798    | Distanziale                         | Spacer       | Distanzstueck | Entretoise     |
| 18         | 014213    | Vite                                | Screw        | Schraube      | Vis            |
| 19         | 423796    | Albero                              | Shaft        | Welle         | Arbre          |
| 20         | 462152    | Coperchio                           | Cover        | Deckel        | Couvercle      |
| 21         | 007224    | Paraolio                            | Oil seal     | Simmerring    | Joint d' huile |
| 22         | 422551    | Coperchio                           | Cover        | Deckel        | Couvercle      |
| 23         | 022168    | Tappo 1/2                           | Plug         | Verschluss    | Bouchon        |
| 24         | 323644    | Distanziale                         | Spacer       | Distanzstueck | Entretoise     |



SCATOLA CAMBIO 2 VELOCITÀ 1000 G/M • 2 SPEED GEARBOX  
GETRIEBEGEHAUSE 2 GESCHW. • BÖITE 2 VITESSES

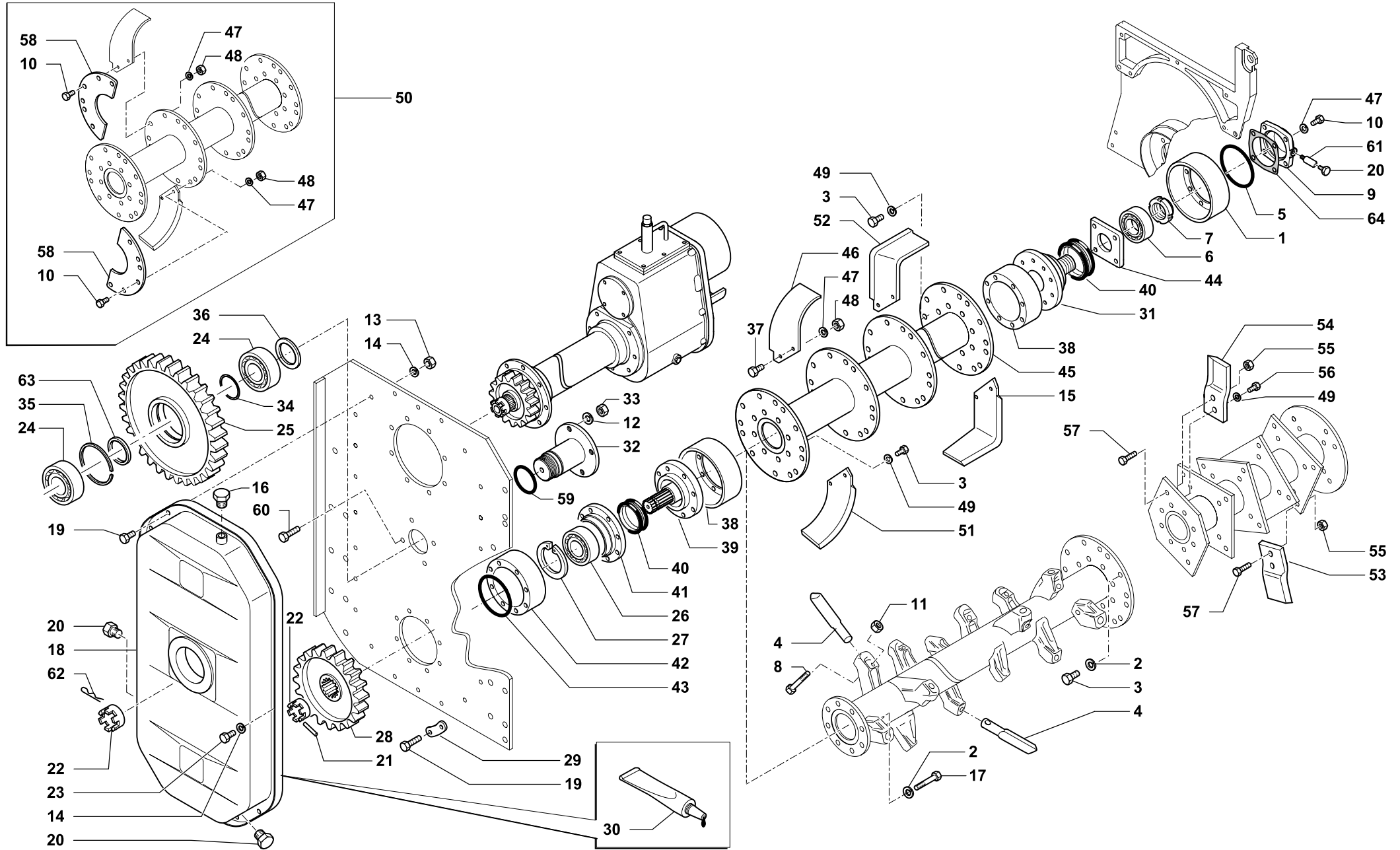
Tav.  
Tab.  
Taf.

118444

Rev.

00 0201

| RIF.       | N. CODICE | DENOMINAZIONE                       | DENOMINATION | BEZEICHNUNG     | DENOMINATION        |
|------------|-----------|-------------------------------------|--------------|-----------------|---------------------|
| 25         | 461494    | Coperchio                           | Cover        | Deckel          | Couvercle           |
| 26         | 013027    | Spina elastica                      | Pin          | Stift           | Goupille            |
| 27         | 423714    | Dado corona                         | Nut          | Mutter          | Ecrou               |
| 28         | 003131S   | Cuscinetto                          | Bearing      | Kugellager      | Roulement           |
| 29         | 422560    | Distanziale                         | Spacer       | Distanzstueck   | Entretoise          |
| 30         | 423281    | Ingranaggio Z 25                    | Gear         | Zanhrad         | Engrenage           |
|            | 423279    | Ingranaggio Z 26                    | Gear         | Zanhrad         | Engrenage           |
|            | 423276    | Ingranaggio Z 27 (standard frangor) | Gear         | Zanhrad         | Engrenage           |
|            | 423277    | Ingranaggio Z 28 (standard frangor) | Gear         | Zanhrad         | Engrenage           |
|            | 423269    | Ingranaggio Z 29                    | Gear         | Zanhrad         | Engrenage           |
|            | 423272    | Ingranaggio Z 30 (standard fresa)   | Gear         | Zanhrad         | Engrenage           |
|            | 423273    | Ingranaggio Z 31 (standard fresa)   | Gear         | Zanhrad         | Engrenage           |
|            | 423286    | Ingranaggio Z 32                    | Gear         | Zanhrad         | Engrenage           |
| 31         | 422559    | Distanziale                         | Spacer       | Distanzstueck   | Entretoise          |
| 32         | 014149    | Vite                                | Screw        | Schraube        | Vis                 |
| <b>420</b> | 33        | 423810                              | Semiasse     | Axle shaft      | Demi-axe            |
| <b>470</b> |           | 423811                              | Semiasse     | Axle shaft      | Demi-axe            |
| <b>520</b> |           | 423812                              | Semiasse     | Axle shaft      | Demi-axe            |
| 34         | 001168    | Serie spessori                      | Set spacers  | Beilagscheiben  | Serie d'epaisseures |
|            | 001169    | Serie spessori                      | Set spacers  | Beilagscheiben  | Serie d'epaisseures |
| 35         | 022167    | Tappo 3/4 sfiato                    | Plug         | Verschluss      | Bouchon             |
| 36         | 014284    | Vite                                | Screw        | Schraube        | Vis                 |
| 37         | 011023    | Rondella                            | Washer       | Unterlegscheibe | Rondelle            |
| 38         | 014278    | Vite                                | Screw        | Schraube        | Vis                 |
| 39         | 011002    | Grower                              | Grower       | Federscheibe    | Grower              |
| 40         | 124505    | Cuffia                              | Guard        | Schütz          | Protection          |
| 41         | 161500    | Supporto porta cuffia               | Support      | Halterung       | Support             |
| 42         | 013055    | Spina                               | Pin          | Stift           | Goupille            |
| 43         | 011003    | Grower                              | Grower       | Federscheibe    | Grower              |
| 44         | 094006    | Sigillante                          | Glue         | Klebstoff       | Colle               |



TRASMISSIONE • TRANSMISSION  
 UBERTRAGUNG • TRANSMISSION

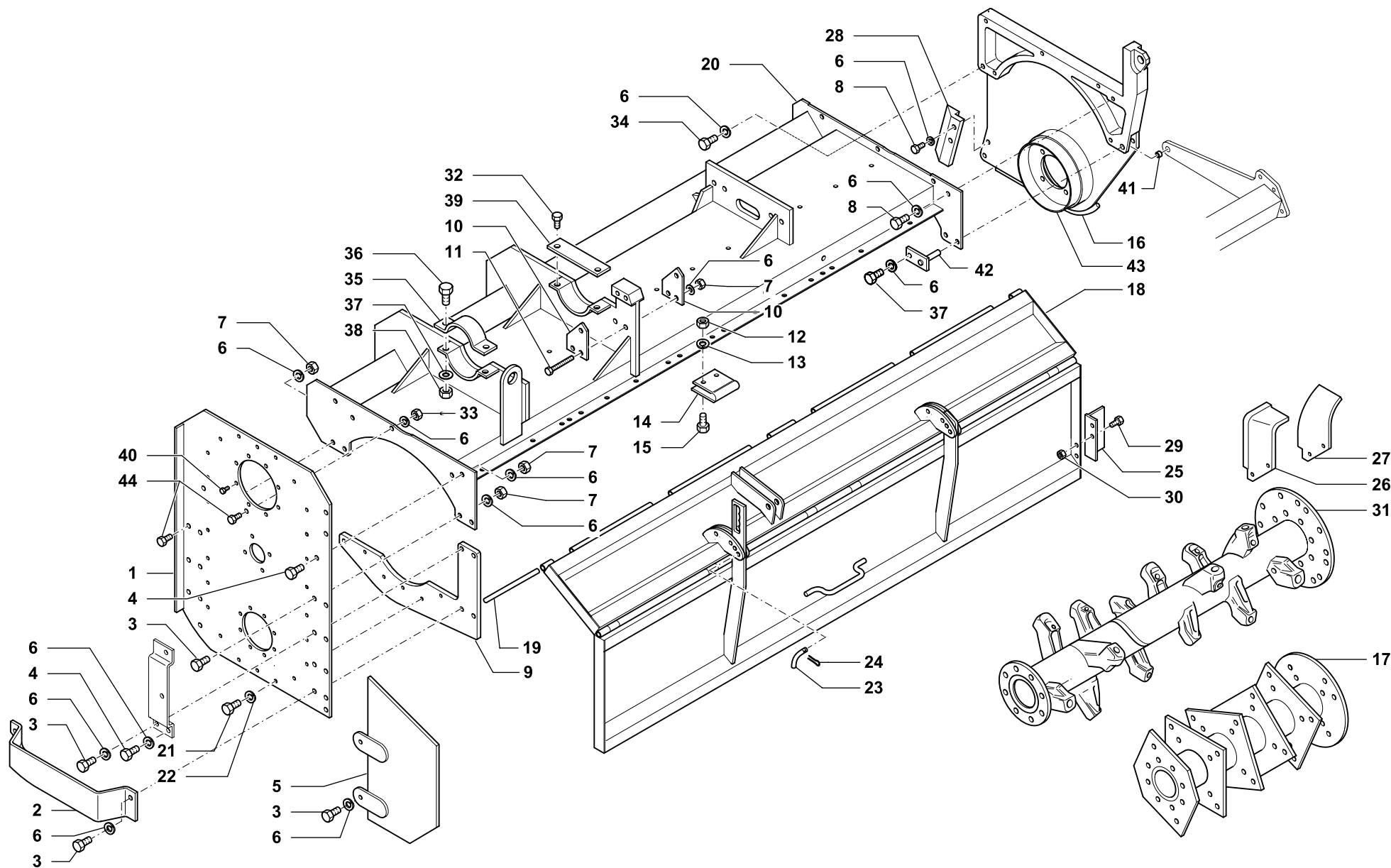
|                      |               |      |                |
|----------------------|---------------|------|----------------|
| Tav.<br>Tab.<br>Taf. | <b>118445</b> | Rev. | <b>00 0201</b> |
|----------------------|---------------|------|----------------|



| RIF. | N. CODICE | DENOMINAZIONE            | DENOMINATION | BEZEICHNUNG     | DENOMINATION         |
|------|-----------|--------------------------|--------------|-----------------|----------------------|
| 1    | 411602    | Parapolvere destro       | Dust cover   | Staubdeckel     | Cache anti poussière |
| 2    | 011005    | Grower                   | Grower       | Federscheibe    | Grower               |
| 3    | 014200    | Vite                     | Screw        | Schraube        | Vis                  |
| 4    | 422538    | Dente                    | Tine         | Zahn            | Dent                 |
| 5    | 007054    | Guarnizione OR           | Gasket       | Dichtring       | Joint                |
| 6    | 003006    | Cuscinetto               | Bearing      | Kugellager      | Roulement            |
| 7    | 005011    | Ghiera                   | Ring nut     | Nutmutter       | Collier              |
| 8    | 014311    | Vite                     | Screw        | Schraube        | Vis                  |
| 9    | 722526    | Coperchio                | Cover        | Deckel          | Couvercle            |
| 10   | 014082    | Vite                     | Screw        | Schraube        | Vis                  |
| 11   | 004084    | Dado                     | Nut          | Mutter          | Ecrou                |
| 12   | 011003    | Grower                   | Grower       | Federscheibe    | Grower               |
| 13   | 004058    | Dado                     | Nut          | Mutter          | Ecrou                |
| 14   | 011002    | Grower                   | Grower       | Federscheibe    | Grower               |
| 15   | 722534    | Zappa sinistra squadro   | Blade        | Messer          | Lame                 |
| 16   | 022055    | Tappo con sfiato 3/4 gas | Plug         | Verschluss      | Bouchon              |
| 17   | 014087    | Vite                     | Screw        | Schraube        | Vis                  |
| 18   | 461460    | Coperchio carter         | Cover        | Deckel          | Couvercle            |
| 19   | 014149    | Vite                     | Screw        | Schraube        | Vis                  |
| 20   | 022009    | Tappo 1/4 gas            | Plug         | Verschluss      | Bouchon              |
| 21   | 013027    | Spina elastica           | Pin          | Stift           | Goupille             |
| 22   | 723523    | Dado a corona            | Nut          | Mutter          | Ecrou                |
| 23   | 014278    | Vite                     | Screw        | Schraube        | Vis                  |
| 24   | 003115S   | Cuscinetto               | Bearing      | Kugellager      | Roulement            |
| 25   | 722514    | Ingranaggio Z 38         | Gear         | Zanhrad         | Engrenage            |
| 26   | 003133S   | Cuscinetto               | Bearing      | Kugellager      | Roulement            |
| 27   | 001034    | Anello di arresto        | Stop ring    | Sperring        | Bague d'arret        |
| 28   | 422649    | Ingranaggio Z 28         | Gear         | Zanhrad         | Engrenage            |
| 29   | 411511    | Rosetta di sicurezza     | Washer       | Unterlegscheibe | Rondelle             |
| 30   | 094006    | Sigillante               | Glue         | Klebstoff       | Colle                |
| 31   | 422621    | Fusello destro           | Drive hub    | Nabe            | Fusee                |
| 32   | 423786    | Perno                    | Pivot        | Bolzen          | Axe                  |
| 33   | 004030    | Dado                     | Nut          | Mutter          | Ecrou                |



| RIF. | N. CODICE | DENOMINAZIONE             | DENOMINATION           | BEZEICHNUNG            | DENOMINATION            |
|------|-----------|---------------------------|------------------------|------------------------|-------------------------|
| 34   | 611713    | Serie spessori            | Set spacers            | Beilagscheiben         | Serie d'épaisseurs      |
| 35   | 723518    | Distanziale               | Spacer                 | Distanzstueck          | Entretoise              |
| 36   | 411863    | Distanziale               | Spacer                 | Distanzstueck          | Entretoise              |
| 37   | 014004    | Vite                      | Screw                  | Schraube               | Vis                     |
| 38   | 411600    | Parapolvere               | Dust cover             | Staubdeckel            | Cache anti poussière    |
| 39   | 422620    | Fusello sinistro          | Hub                    | Nabe                   | Disque                  |
| 40   | 871504    | Tenuta                    | Oil seal               | Simmerring             | Joint d'huile           |
| 41   | 422625    | Supporto sinistro         | L.H. support           | L.H. halterung         | Support gauche          |
| 42   | 411601    | Parapolvere sinistro      | Dust cover             | Staubdeckel            | Cache anti poussière    |
| 43   | 007153    | Guarnizione OR            | Gasket                 | Dichtring              | Joint                   |
| 44   | 422626    | Supporto destro           | R.H. support           | R.H. halterung         | Support droite          |
| 420  | 45        | 461822                    | Rotore R               | Rotor R                | Rotor R                 |
| 470  | 461823    | Rotore R                  | Rotor R                | Rotor R                | Rotor R                 |
| 520  | 461824    | Rotore R                  | Rotor R                | Rotor R                | Rotor R                 |
| 46   | 722537    | Zappa destra elicoidale   | Right helicoidal blade | Gekrümmtes Messer R.H. | Lame hélicoïdale droite |
| 47   | 011004    | Grower                    | Grower                 | Federscheibe           | Grower                  |
| 48   | 004004    | Dado                      | Nut                    | Mutter                 | Ecrou                   |
| 49   | 011005    | Grower                    | Grower                 | Federscheibe           | Grower                  |
| 50   | 771561    | Kit controflange          | Flange kit             | Flansch                | Flasque                 |
| 51   | 722538    | Zappa sinistra elicoidale | Left helicoidal blade  | Gekrümmtes Messer L.H. | Lame hélicoïdale gauche |
| 52   | 722533    | Zappa destra squadro      | Blade                  | Messer                 | Lame                    |
| 53   | 422631    | Coltello sinistro         | L.H. Knife             | Messer links           | Couteau gauche          |
| 54   | 422630    | Coltello destro           | R.H. Knife             | Messer rechts          | Couteau droite          |
| 55   | 004072    | Dado                      | Nut                    | Mutter                 | Ecrou                   |
| 56   | 014222    | Vite                      | Screw                  | Schraube               | Vis                     |
| 57   | 014261    | Vite                      | Screw                  | Schraube               | Vis                     |
| 58   | 712608    | Controflangia             | Flange                 | Flansch                | Flasque                 |
| 59   | 007011    | Guarnizione OR            | Gasket                 | Dichtring              | Joint                   |
| 60   | 014213    | Vite                      | Screw                  | Schraube               | Vis                     |
| 61   | 021082    | Colonna                   | Column                 | Saeule                 | Colonnnette             |
| 62   | 002018    | Copiglia                  | Split pin              | Hohlstift              | Goupille                |
| 63   | 723519    | Distanziale               | Spacer                 | Distanzstueck          | Entretoise              |
| 64   | 724507    | Guarnizione               | Gasket                 | Dichtring              | Joint                   |



GRUPPO TELAIO SINISTRO • L.H. FRAME GROUP  
 LINKS RAHMENSGRUPPE • GROUPE CHASSIS GAUCHE



|                      |               |      |                |
|----------------------|---------------|------|----------------|
| Tav.<br>Tab.<br>Taf. | <b>118351</b> | Rev. | <b>01 0202</b> |
|----------------------|---------------|------|----------------|

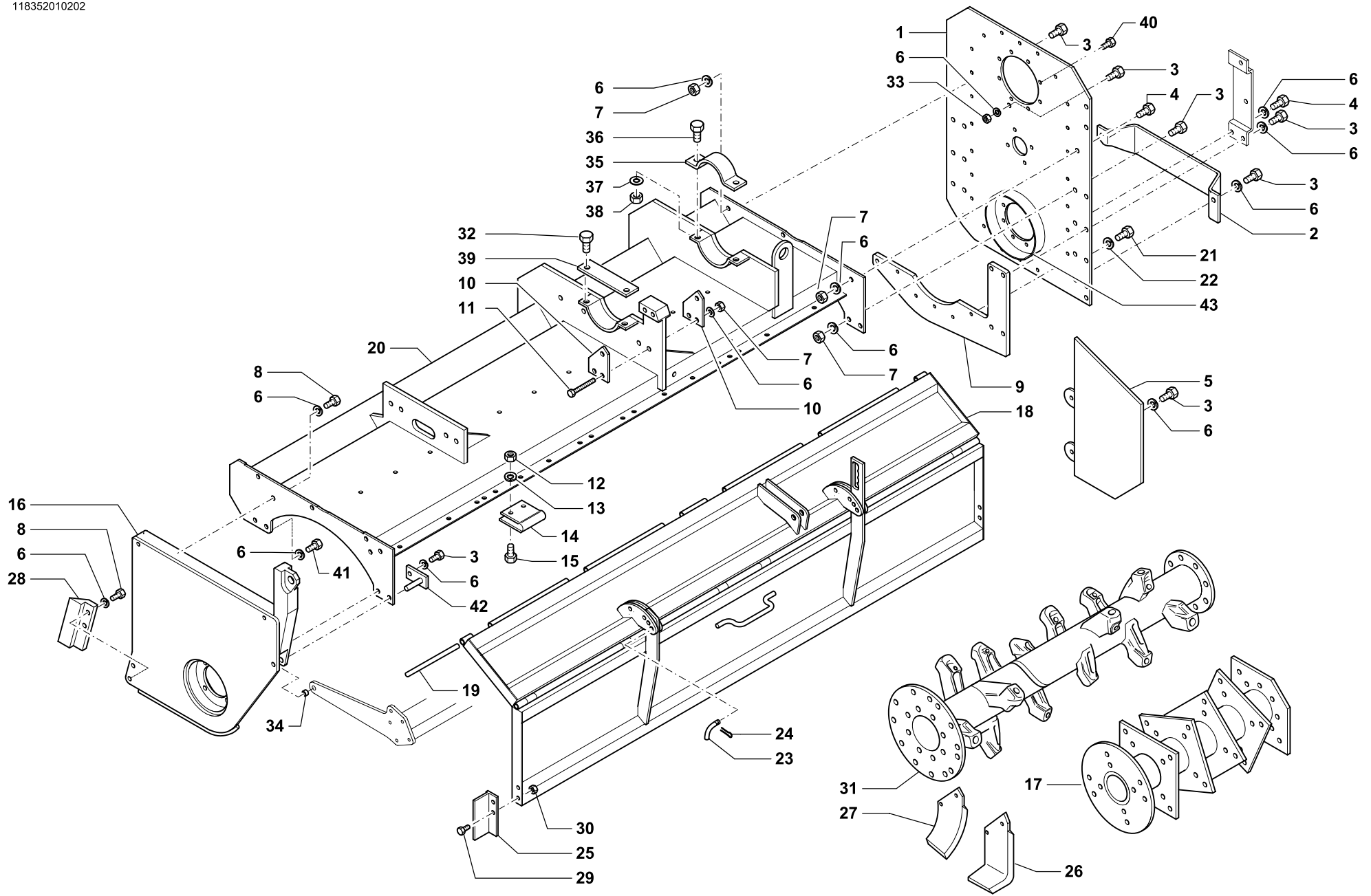




| RIF.       | N. CODICE | DENOMINAZIONE              | DENOMINATION                      | BEZEICHNUNG                | DENOMINATION                  |
|------------|-----------|----------------------------|-----------------------------------|----------------------------|-------------------------------|
| 1          | 461409    | Laterale sinistro esterno  | L.H. side shield                  | L.H. seitlicher schild     | Joue gauche                   |
| 2          | 461456    | Protezione carter          | Protection                        | Schutz                     | Protection                    |
| 3          | 014004    | Vite                       | Screw                             | Schraube                   | Vis                           |
| 4          | 014019    | Vite                       | Screw                             | Schraube                   | Vis                           |
| 5          | 461027    | Laterale parazole sinistro | L.H. side clod bumper             | Links Erdklumpenschutz     | Pare-mottes gauche            |
| 6          | 011004    | Grower                     | Grower                            | Federscheibe               | Grower                        |
| 7          | 004004    | Dado                       | Nut                               | Mutter                     | Ecrou                         |
| 8          | 014011    | Vite                       | Screw                             | Schraube                   | Vis                           |
| 9          | 411860    | Piastra                    | Plate                             | Plate                      | Platte                        |
| 10         | 411534    | Supporto                   | Support                           | Halterung                  | Support                       |
| 11         | 014201    | Vite                       | Screw                             | Schraube                   | Vis                           |
| 12         | 004030    | Dado                       | Nut                               | Mutter                     | Ecrou                         |
| 13         | 011003    | Grower                     | Grower                            | Federscheibe               | Grower                        |
| 14         | 411604    | Cerniera                   | Hinge                             | Scharnier                  | Charniere                     |
| 15         | 014384    | Vite                       | Screw                             | Schraube                   | Vis                           |
| 16         | 461330    | Laterale sinistro interno  | L.H. side shield                  | L.H. seitlicher schild     | Joue gauche                   |
| <b>420</b> | 17        | 461425                     | Rotore a coltelli                 | Knife type drum            | Rotor a couteaux              |
| <b>470</b> |           | 461426                     | Rotore a coltelli                 | Knife type drum            | Rotor a couteaux              |
| <b>520</b> |           | 461427                     | Rotore a coltelli                 | Knife type drum            | Rotor a couteaux              |
| <b>420</b> | 18        | 466444                     | Scudo mobile sinistro             | L.H. rear shield           | Tablier arriere gauche        |
| <b>470</b> |           | 466445                     | Scudo mobile sinistro             | L.H. rear shield           | Tablier arriere gauche        |
| <b>520</b> |           | 466446                     | Scudo mobile sinistro             | L.H. rear shield           | Tablier arriere gauche        |
| <b>420</b> | 19        | 423815                     | Perno cerniera ventola            | Pivot                      | Axe                           |
| <b>470</b> |           | 423816                     | Perno cerniera ventola            | Pivot                      | Axe                           |
| <b>520</b> |           | 423817                     | Perno cerniera ventola            | Pivot                      | Axe                           |
| <b>420</b> | 20        | 468412                     | Telaio sinistro                   | L.H. frame                 | Chassis gauche                |
| <b>470</b> |           | 468413                     | Telaio sinistro                   | L.H. frame                 | Chassis gauche                |
| <b>520</b> |           | 468414                     | Telaio sinistro                   | L.H. frame                 | Chassis gauche                |
|            | 21        | 014150                     | Vite                              | Screw                      | Vis                           |
|            | 22        | 011002                     | Grower                            | Grower                     | Grower                        |
|            | 23        | 423558                     | Perno molla                       | Pivot                      | Axe                           |
|            | 24        | 002014                     | Copiglia                          | Split pin                  | Goupille                      |
|            | 25        | 461318                     | Prolunga sinistro                 | L.H. extension             | Rallonge gauche               |
|            | 26        | 722553                     | Zappa a squadro speciale sinistra | Special L-shaped blade, LH | Lame équerre spéciale, gauche |



| RIF.       | N. CODICE | DENOMINAZIONE                   | DENOMINATION               | BEZEICHNUNG                | DENOMINATION                      |
|------------|-----------|---------------------------------|----------------------------|----------------------------|-----------------------------------|
| 27         | 722555    | Zappa curva speciale sinistra   | Special C-shaped blade, LH | Sondersichelmesser, links  | Lame hélicoïdale spéciale, gauche |
| 28         | 412376    | Lama centrale sinistra          | Central blade, LH          | Mittelmesser, links        | Lame centrale, gauche             |
| 29         | 014382    | Vite                            | Screw                      | Schraube                   | Vis                               |
| 30         | 004079    | Dado                            | Nut                        | Mutter                     | Ecrou                             |
| <b>420</b> | 31        | 461390                          | Rotore denti sinistro      | L.H. ZinkenRotor           | Rotor a dents gauche              |
| <b>470</b> |           | 461391                          | Rotore denti sinistro      | L.H. ZinkenRotor           | Rotor a dents gauche              |
| <b>520</b> |           | 461392                          | Rotore denti sinistro      | L.H. ZinkenRotor           | Rotor a dents gauche              |
| 32         | 014240    | Vite                            | Screw                      | Schraube                   | Vis                               |
| 33         | 004041    | Dado                            | Nut                        | Mutter                     | Ecrou                             |
| 34         | 014103    | Vite                            | Screw                      | Schraube                   | Vis                               |
| 35         | 411852    | Supporto                        | Support                    | Halterung                  | Support                           |
| 36         | 014198    | Vite                            | Screw                      | Schraube                   | Vis                               |
| 37         | 010006    | Rondella                        | Washer                     | Scheibe                    | Rondelle                          |
| 38         | 004072    | Dado                            | Nut                        | Mutter                     | Ecrou                             |
| 39         | 411853    | Staffa                          | Flask                      | Pratze                     | Bride                             |
| 40         | 014254    | Vite                            | Screw                      | Schraube                   | Vis                               |
| 41         | 423769    | Boccola                         | Bush                       | Buchse                     | Bague                             |
| 42         | 461498    | Perno fulcro                    | Pivot                      | Bolzen                     | Axe                               |
| 43         | 423340    | Anello raschiaerba (da saldare) | Dust cover (to be welded)  | Halterung (zum schweissen) | Parapoussiere (a' souder)         |
| 44         | 014212    | Vite                            | Screw                      | Schraube                   | Vis                               |



**GRUPPO TELAIO DESTRO • R.H. FRAME GROUP**  
**RECHTS RAHMENSGRUPPE • GROUPE CHASSIS DROITE**



|                      |               |      |                |
|----------------------|---------------|------|----------------|
| Tav.<br>Tab.<br>Taf. | <b>118352</b> | Rev. | <b>01 0202</b> |
|----------------------|---------------|------|----------------|



| RIF.       | N. CODICE | DENOMINAZIONE            | DENOMINATION                    | BEZEICHNUNG                | DENOMINATION               |                               |
|------------|-----------|--------------------------|---------------------------------|----------------------------|----------------------------|-------------------------------|
| 1          | 461411    | Laterale destro esterno  | R.H. side shield                | R.H. seitlicher schild     | Joue droite                |                               |
| 2          | 461445    | Protezione carter        | Protection                      | Schutz                     | Protection                 |                               |
| 3          | 014004    | Vite                     | Screw                           | Schraube                   | Vis                        |                               |
| 4          | 014019    | Vite                     | Screw                           | Schraube                   | Vis                        |                               |
| 5          | 461026    | Laterale parazole destro | R.H. side clod bumper           | R.H. Erdklumpenschutz      | Pare-mottes droite         |                               |
| 6          | 011004    | Grower                   | Grower                          | Federscheibe               | Grower                     |                               |
| 7          | 004004    | Dado                     | Nut                             | Mutter                     | Ecrou                      |                               |
| 8          | 014011    | Vite                     | Screw                           | Schraube                   | Vis                        |                               |
| 9          | 411860    | Piastra                  | Plate                           | Plate                      | Platte                     |                               |
| 10         | 411534    | Supporto                 | Support                         | Halterung                  | Support                    |                               |
| 11         | 014201    | Vite                     | Screw                           | Schraube                   | Vis                        |                               |
| 12         | 004030    | Dado                     | Nut                             | Mutter                     | Ecrou                      |                               |
| 13         | 011003    | Grower                   | Grower                          | Federscheibe               | Grower                     |                               |
| 14         | 411604    | Cerniera                 | Hinge                           | Scharnier                  | Charniere                  |                               |
| 15         | 014145    | Vite                     | Screw                           | Schraube                   | Vis                        |                               |
| 16         | 461331    | Laterale destro interno  | R.H. side shield                | R.H. seitlicher schild     | Joue droite                |                               |
| <b>420</b> | 17        | 461425                   | Rotore a coltelli               | Knife type drum            | Messerwelle                | Rotor a couteaux              |
| <b>470</b> |           | 461426                   | Rotore a coltelli               | Knife type drum            | Messerwelle                | Rotor a couteaux              |
| <b>520</b> |           | 461427                   | Rotore a coltelli               | Knife type drum            | Messerwelle                | Rotor a couteaux              |
| <b>420</b> | 18        | 466434                   | Scudo mobile destro             | R.H. rear shield           | R.H. bodenklappe           | Tablier arriere droite        |
| <b>470</b> |           | 466435                   | Scudo mobile destro             | R.H. rear shield           | R.H. bodenklappe           | Tablier arriere droite        |
| <b>520</b> |           | 466436                   | Scudo mobile destro             | R.H. rear shield           | R.H. bodenklappe           | Tablier arriere droite        |
| <b>420</b> | 19        | 423815                   | Perno cerniera ventola          | Pivot                      | Bolzen                     | Axe                           |
| <b>470</b> |           | 423816                   | Perno cerniera ventola          | Pivot                      | Bolzen                     | Axe                           |
| <b>520</b> |           | 423817                   | Perno cerniera ventola          | Pivot                      | Bolzen                     | Axe                           |
| <b>420</b> | 20        | 468402                   | Telaio destro                   | R.H. frame                 | R.H. Rahmen                | Chassis droite                |
| <b>470</b> |           | 468403                   | Telaio destro                   | R.H. frame                 | R.H. Rahmen                | Chassis droite                |
| <b>520</b> |           | 468404                   | Telaio destro                   | R.H. frame                 | R.H. Rahmen                | Chassis droite                |
|            | 21        | 014150                   | Vite                            | Screw                      | Schraube                   | Vis                           |
|            | 22        | 011002                   | Grower                          | Grower                     | Federscheibe               | Grower                        |
|            | 23        | 423558                   | Perno molla                     | Pivot                      | Bolzen                     | Axe                           |
|            | 24        | 002014                   | Copiglia                        | Split pin                  | Hohlstif                   | Goupille                      |
|            | 25        | 461317                   | Prolunga destro                 | R.H. extension             | R.H. Verlängerungsstück    | Rallonge droite               |
|            | 26        | 722552                   | Zappa a squadro speciale destra | Special L-shaped blade, RH | Sonderwinkelmesser, rechts | Lame équerre spéciale, droite |



GRUPPO TELAIO DESTRO • R.H. FRAME GROUP  
RECHTS RAHMENSGRUPPE • GROUPE CHASSIS DROITE

Tav.  
Tab.  
Taf.

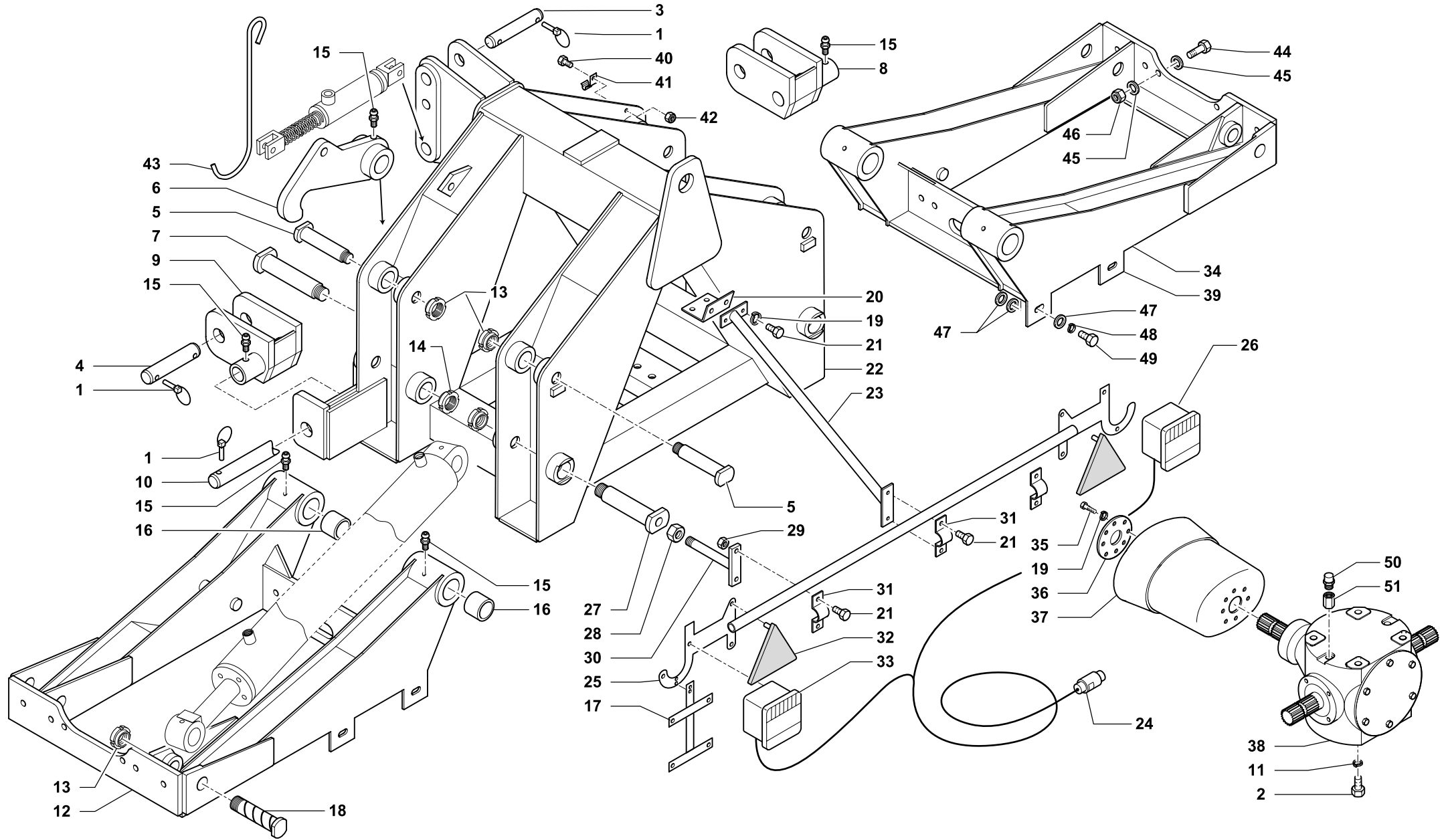
118352

Rev.

01

0202

| RIF.       | N. CODICE | DENOMINAZIONE                   | DENOMINATION               | BEZEICHNUNG                | DENOMINATION                      |
|------------|-----------|---------------------------------|----------------------------|----------------------------|-----------------------------------|
| 27         | 722554    | Zappa curva speciale destra     | Special C-shaped blade, RH | Sondersichelmesser, rechts | Lame hélicoïdale spéciale, droite |
| 28         | 412377    | Lama centrale destra            | Central blade, RH          | Mittelmesser, rechts       | Lame centrale, droite             |
| 29         | 014382    | Vite                            | Screw                      | Schraube                   | Vis                               |
| 30         | 004079    | Dado                            | Nut                        | Mutter                     | Ecrou                             |
| <b>420</b> | 31        | 461395                          | Rotore denti destro        | R.H. ZinkenRotor           | Rotor a dents droite              |
| <b>470</b> |           | 461396                          | Rotore denti destro        | R.H. ZinkenRotor           | Rotor a dents droite              |
| <b>520</b> |           | 461397                          | Rotore denti destro        | R.H. ZinkenRotor           | Rotor a dents droite              |
| 32         | 014240    | Vite                            | Screw                      | Schraube                   | Vis                               |
| 33         | 004041    | Dado                            | Nut                        | Mutter                     | Ecrou                             |
| 34         | 423769    | Boccola                         | Bush                       | Buchse                     | Bague                             |
| 35         | 411852    | Supporto                        | Support                    | Halterung                  | Support                           |
| 36         | 014198    | Vite                            | Screw                      | Schraube                   | Vis                               |
| 37         | 010006    | Rondella                        | Washer                     | Scheibe                    | Rondelle                          |
| 38         | 004072    | Dado                            | Nut                        | Mutter                     | Ecrou                             |
| 39         | 411853    | Staffa                          | Flask                      | Pratze                     | Bride                             |
| 40         | 014213    | Vite                            | Screw                      | Schraube                   | Vis                               |
| 41         | 014103    | Vite                            | Screw                      | Schraube                   | Vis                               |
| 42         | 461498    | Perno fulcro                    | Pivot                      | Bolzen                     | Axe                               |
| 43         | 423340    | Anello raschiaerba (da saldare) | Dust cover (to be welded)  | Halterung (zum schweissen) | Parapoussiere (a' souder)         |



TELAIO CENTRALE • CENTER FRAME  
MITTELRAHMEN • CHASSIS CENTRAL

|                      |               |      |                |
|----------------------|---------------|------|----------------|
| Tav.<br>Tab.<br>Taf. | <b>118353</b> | Rev. | <b>00 0201</b> |
|----------------------|---------------|------|----------------|



TELAIO CENTRALE • CENTER FRAME  
MITTELRAHMEN • CHASSIS CENTRAL

Tav.  
Tab.  
Taf.

118353

Rev.

00 0201

| RIF. | N. CODICE | DENOMINAZIONE                         | DENOMINATION                        | BEZEICHNUNG                              | DENOMINATION                        |
|------|-----------|---------------------------------------|-------------------------------------|--|-------------------------------------|
| 1    | 013011    | Spina a scatto                        | Pin                                 | Stift                                    | Goupille                            |
| 2    | 014326    | Vite                                  | Screw                               | Schraube                                 | Vis                                 |
| 3    | 723630    | Perno attacco 3° punto sup. (3° cat.) | Upper 3-point hitch pivot (cat.III) | Bolzen j. oberen 3-Pkt.-Hitch (Kat.III)  | Axe attelage 3°-point sup. (3°cat.) |
|      | 621723    | Perno attacco 3° punto sup. (2° cat.) | Upper 3-point hitch pivot (cat.II)  | Bolzen j. oberen 3-Pkt.-Hitch (Kat.II)   | Axe attelage 3°-point sup. (2°cat.) |
| 4    | 723606    | Perno attacco 3° punto inf. (3° cat.) | Lower 3-point hitch pivot (cat.III) | Bolzen j. unteren 3-Pkt.-Hitch (Kat.III) | Axe attelage 3°-point inf. (3°cat.) |
|      | 621724    | Perno attacco 3° punto inf. (2° cat.) | Lower 3-point hitch pivot (cat.II)  | Bolzen j. unteren 3-Pkt.-Hitch (Kat.II)  | Axe attelage 3°-point inf. (2°cat.) |
| 5    | 623744    | Perno                                 | Pivot                               | Bolzen                                   | Axe                                 |
| 6    | 662523    | Gancio di bloccaggio                  | Hook                                | Haken                                    | Crochet                             |
| 7    | 623743    | Perno                                 | Pivot                               | Bolzen                                   | Axe                                 |
| 8    | 461311    | Attacco oscillante destro (3° cat.)   | Swinging arm, r. (cat.III)          | Pendelnder Anschluss, r. (Kat.III)       | Attelage oscillant DX (3°cat.)      |
|      | 461335    | Attacco oscillante destro (2° cat.)   | Swinging arm, r. (cat.II)           | Pendelnder Anschluss, r. (Kat.II)        | Attelage oscillant DX (2°cat.)      |
| 9    | 461312    | Attacco oscillante sinistro (3° cat.) | Swinging arm, l. (cat.III)          | Pendelnder Anschluss, l. (Kat.III)       | Attelage oscillant SX (3°cat.)      |
|      | 461336    | Attacco oscillante sinistro (2° cat.) | Swinging arm, l. (cat.II)           | Pendelnder Anschluss, l. (Kat.II)        | Attelage oscillant SX (2°cat.)      |
| 10   | 621735    | Perno                                 | Pivot                               | Bolzen                                   | Axe                                 |
| 11   | 011005    | Grower                                | Grower                              | Federscheibe                             | Grower                              |
| 12   | 461486    | Telaio sinistro                       | Left frame                          | Links Rahmen                             | Chassis gauche                      |
| 13   | 005007    | Ghiera                                | Ring nut                            | Nutmutter                                | Collier                             |
| 14   | 005008    | Ghiera                                | Ring nut                            | Nutmutter                                | Collier                             |
| 15   | 008007    | Ingrassatore                          | Grease nipple                       | Fettbuechse                              | Graisser                            |
| 16   | 523603    | Bronzina                              | Bushing                             | Buchse                                   | Douille                             |
| 17   | 027007    | Portatarga                            | Number plate holder                 | Schildrahmen                             | Porte plaque                        |
| 18   | 423768    | Perno                                 | Pivot                               | Bolzen                                   | Axe                                 |
| 19   | 011002    | Grower                                | Grower                              | Federscheibe                             | Grower                              |
| 20   | 662517    | Piastra                               | Plate                               | Teller                                   | Plateau                             |
| 21   | 014149    | Vite                                  | Screw                               | Schraube                                 | Vis                                 |
| 22   | 662518    | Telaio centrale                       | Center frame                        | Mittelrahmen                             | Chassis central                     |
| 23   | 461093    | Barra di attacco centrale             | Bar                                 | Stange                                   | Barre                               |
| 24   | 027005    | Cavo alimentazione                    | Power supply wire                   | Zufuhrkabel                              | Cable alimentation                  |
| 25   | 027000    | Barra portafanali                     | Bar                                 | Stange                                   | Barre                               |
| 26   | 027004    | Fanale destro                         | Right light                         | Rechts Scheinwerfer                      | Droit Feu                           |
| 27   | 623748    | Perno                                 | Pivot                               | Bolzen                                   | Axe                                 |
| 28   | 004069    | Dado                                  | Nut                                 | Mutter                                   | Ecrou                               |
| 29   | 004084    | Dado                                  | Nut                                 | Mutter                                   | Ecrou                               |

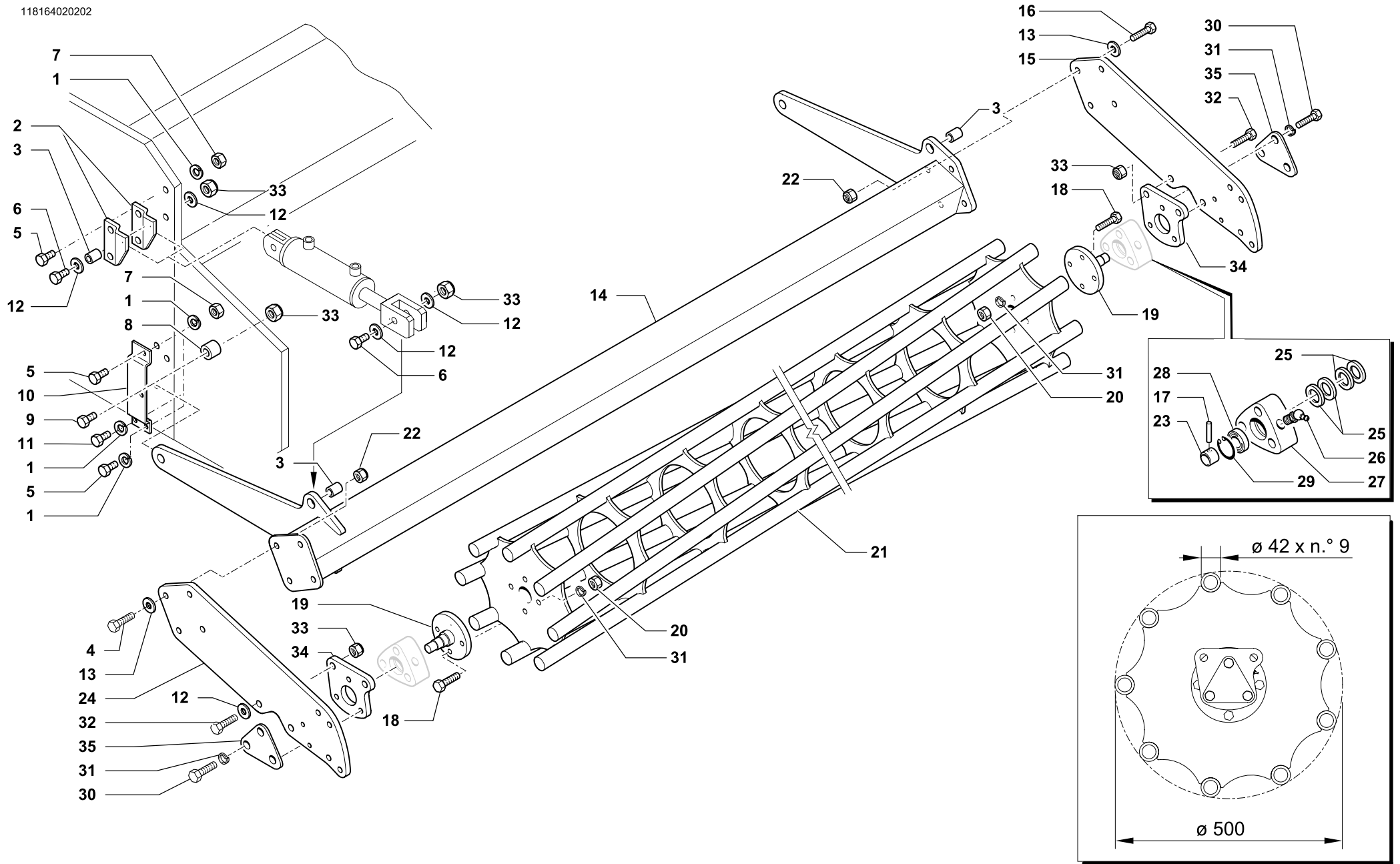


TELAIO CENTRALE • CENTER FRAME  
MITTELRAHMEN • CHASSIS CENTRAL

Tav. 118353 Rev. 00 0201  
Tab. Taf.

| RIF. | N. CODICE     | DENOMINAZIONE                    | DENOMINATION              | BEZEICHNUNG                            | DENOMINATION                     |
|------|---------------|----------------------------------|---------------------------|--|----------------------------------|
| 30   | 461094        | Attacco barra portafanali        | Bar connection            | Stangenanschluss                       | Attelage barre                   |
| 31   | 612941        | Piastra ferma tubo               | Plate                     | Teller                                 | Plateau                          |
| 32   | 027002        | Catadiottro                      | Reflector                 | Rückstrahler                           | Catadioptré                      |
| 33   | 027003        | Fanale sinistro                  | Left Light                | Links Scheinwerfer                     | Gauche Feu                       |
| 34   | 461485        | Telaio destro                    | Right frame               | Rechts Rahmen                          | Chassis droit                    |
| 35   | 014278        | Vite                             | Screw                     | Schraube                               | Vis                              |
| 36   | 612727        | Flangia                          | Flange                    | Flansch                                | Flasque                          |
| 37   | 099140        | Cuffia                           | Guard                     | Schütz                                 | Protection                       |
| 38   | 471441        | Scatola centrale                 | Housing                   | Gehäuse                                | Bôte                             |
| 39   | 412250        | Piastrina (a saldare)            | Plate (to be welded)      | Teller (zum schweissen)                | Plateau (à souder)               |
| 40   | 014036        | Vite                             | Screw                     | Schraube                               | Vis                              |
| 41   | 611728        | Staffa gancio                    | Flask                     | Pratze                                 | Bride                            |
| 42   | 004055        | Dado                             | Nut                       | Mutter                                 | Ecrou                            |
| 43   | 523652        | Gancio cardano 402 mm            | Drive shaft hook          | Gelenkwelle aufhaengung                | Crochet                          |
| 43   | 523654        | Gancio cardano 492 mm            | Drive shaft hook          | Gelenkwelle aufhaengung                | Crochet                          |
| 44   | 014398        | Vite                             | Screw                     | Schraube                               | Vis                              |
| 45   | 010006        | Rondella                         | Washer                    | Scheibe                                | Rondelle                         |
| 46   | 004072        | Dado                             | Nut                       | Mutter                                 | Ecrou                            |
| 47   | 010013        | Rondella                         | Washer                    | Scheibe                                | Rondelle                         |
| 48   | 011004        | Grower                           | Grower                    | Federscheibe                           | Grower                           |
| 49   | 014397        | Vite                             | Screw                     | Schraube                               | Vis                              |
| 50   | 022176        | Tappo 3/8 gas                    | Plug                      | Verschluss                             | Boucho                           |
| 51   | 021060        | Colonna                          | Column                    | Saeule                                 | Colonnnette                      |
|      | <b>671812</b> | Kit attacco oscillante (2° cat.) | Swinging arm kit (cat.II) | Teile f. pendelnden Anschluss (Kat.II) | Kit attelage oscillant (2° cat.) |





RULLO GABBIA Ø 500 SINISTRO • L.H. CAGE ROLLER Ø 500  
 KÄFIGWALZE Ø 500 LINKS • ROULEAU CAGE Ø 500 GAUCHE



|                      |               |      |                |
|----------------------|---------------|------|----------------|
| Tav.<br>Tab.<br>Taf. | <b>118164</b> | Rev. | <b>02 0202</b> |
|----------------------|---------------|------|----------------|



RULLO GABBIA Ø 500 SINISTRO • L.H. CAGE ROLLER Ø 500  
KÄFIGWALZE Ø 500 LINKS • ROULEAU CAGE Ø 500 GAUCHE

Tav.  
Tab.  
Taf.

118164

Rev.

02 0202

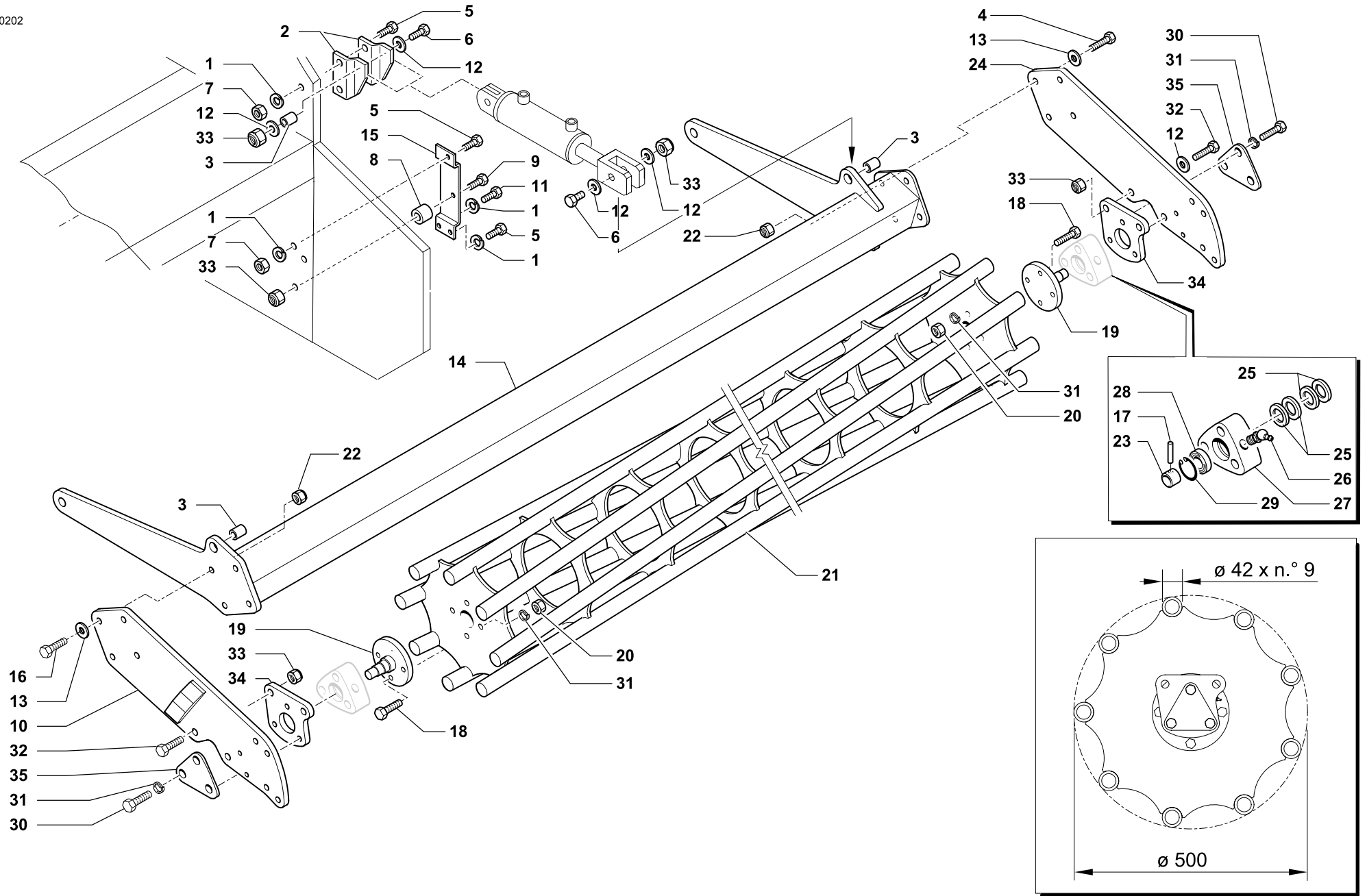
| RIF.       | N. CODICE | DENOMINAZIONE            | DENOMINATION                 | BEZEICHNUNG           | DENOMINATION            |
|------------|-----------|--------------------------|------------------------------|-----------------------|-------------------------|
| 1          | 011004    | Grower                   | Grower                       | Federscheibe          | Grower                  |
| 2          | 411528    | Piastra                  | Plate                        | Plate                 | Platte                  |
| 3          | 423833    | Distanziale              | Spacer                       | Distanzstueck         | Entretoise              |
| 4          | 014082    | Vite                     | Screw                        | Schraube              | Vis                     |
| 5          | 014019    | Vite                     | Screw                        | Schraube              | Vis                     |
| 6          | 014398    | Vite                     | Screw                        | Schraube              | Vis                     |
| 7          | 004004    | Dado                     | Nut                          | Mutter                | Ecrou                   |
| 8          | 423769    | Boccola                  | Bush                         | Buchse                | Bague                   |
| 9          | 014399    | Vite                     | Screw                        | Schraube              | Vis                     |
| 10         | 423791    | Taschetta rullo sinistra | L.H. Attach. arm fulcrum lug | Links Befestigungsarm | Fixation de bras gauche |
| 11         | 014004    | Vite                     | Screw                        | Schraube              | Vis                     |
| 12         | 010006    | Rondella                 | Washer                       | Unterlegscheibe       | Rondelle                |
| 13         | 010002    | Rondella                 | Washer                       | Unterlegscheibe       | Rondelle                |
| <b>420</b> | 961504    | Barra rinforzo rullo SX  | Bar                          | Stab                  | Barre                   |
| <b>470</b> | 961505    | Barra rinforzo rullo SX  | Bar                          | Stab                  | Barre                   |
| <b>520</b> | 961506    | Barra rinforzo rullo SX  | Bar                          | Stab                  | Barre                   |
| 15         | 961649    | Braccio interno destro   | Arm                          | Arm                   | Bras                    |
| 16         | 014176    | Vite                     | Screw                        | Schraube              | Vis                     |
| 17         | 013019    | Spina                    | Pin                          | Stift                 | Goupille                |
| 18         | 014254    | Vite                     | Screw                        | Schraube              | Vis                     |
| 19         | 661401    | Fusello                  | Stub axle                    | Flansch               | Fusee                   |
| 20         | 004030    | Dado                     | Nut                          | Mutter                | Ecrou                   |
| <b>420</b> | 961951    | Rullo gabbia             | Cage roller                  | Käfigwalze            | Rouleau cage            |
| <b>470</b> | 961952    | Rullo gabbia             | Cage roller                  | Käfigwalze            | Rouleau cage            |
| <b>520</b> | 961953    | Rullo gabbia             | Cage roller                  | Käfigwalze            | Rouleau cage            |
| 22         | 004054    | Dado                     | Nut                          | Mutter                | Ecrou                   |
| 23         | 661403    | Bussola                  | Bush                         | Buchse                | Bague                   |
| 24         | 912687    | Braccio                  | Arm                          | Arm                   | Bras                    |
| 25         | 099018    | Gruppo parapolvere       | Dust cover                   | Staubdeckel           | Cache anti poussière    |
| 26         | 008005    | Ingrassatore             | Grease nipple                | Fettbuechse           | Graisser                |
| 27         | 421604    | Supporto                 | Support                      | Halterung             | Support                 |
| 28         | 003051    | Cuscinetto               | Bearing                      | Kugellager            | Roulement               |
| 29         | 001006    | Anello di arresto        | Stop ring                    | Sperring              | Bague d'arret           |



RULLO GABBIA Ø 500 SINISTRO • L.H. CAGE ROLLER Ø 500  
KÄFIGWALZE Ø 500 LINKS • ROULEAU CAGE Ø 500 GAUCHE

|                      |               |      |           |             |
|----------------------|---------------|------|-----------|-------------|
| Tav.<br>Tab.<br>Taf. | <b>118164</b> | Rev. | <b>02</b> | <b>0202</b> |
|----------------------|---------------|------|-----------|-------------|

| RIF. | N. CODICE | DENOMINAZIONE | DENOMINATION | BEZEICHNUNG  | DENOMINATION |
|------|-----------|---------------|--------------|--------------|--------------|
| 30   | 014145    | Vite          | Screw        | Schraube     | Vis          |
| 31   | 011003    | Grower        | Grower       | Federscheibe | Grower       |
| 32   | 014192    | Vite          | Screw        | Schraube     | Vis          |
| 33   | 004072    | Dado          | Nut          | Mutter       | Ecrou        |
| 34   | 661402    | Piastra       | Plate        | Plate        | Platte       |
| 35   | 612372    | Chiusura      | Plate        | Plate        | Platte       |



RULLO GABBIA Ø 500 DESTRO • R.H. CAGE ROLLER Ø 500  
 KÄFIGWALZE Ø 500 RECHTS • ROULEAU CAGE Ø 500 DROITE

|                      |               |      |                |
|----------------------|---------------|------|----------------|
| Tav.<br>Tab.<br>Taf. | <b>118165</b> | Rev. | <b>02 0202</b> |
|----------------------|---------------|------|----------------|



RULLO GABBIA Ø 500 DESTRO • R.H. CAGE ROLLER Ø 500  
KÄFIGWALZE Ø 500 RECHTS • ROULEAU CAGE Ø 500 DROITE

Tav.  
Tab.  
Taf.

118165

Rev.

02 0202

| RIF.       | N. CODICE | DENOMINAZIONE            | DENOMINATION                 | BEZEICHNUNG            | DENOMINATION           |              |
|------------|-----------|--------------------------|------------------------------|------------------------|------------------------|--------------|
| 1          | 011004    | Grower                   | Grower                       | Federscheibe           | Grower                 |              |
| 2          | 411529    | Piastra                  | Plate                        | Plate                  | Platte                 |              |
| 3          | 412833    | Distanziale              | Spacer                       | Distanzstueck          | Entretoise             |              |
| 4          | 014082    | Vite                     | Screw                        | Schraube               | Vis                    |              |
| 5          | 014019    | Vite                     | Screw                        | Schraube               | Vis                    |              |
| 6          | 014398    | Vite                     | Screw                        | Schraube               | Vis                    |              |
| 7          | 004004    | Dado                     | Nut                          | Mutter                 | Ecrou                  |              |
| 8          | 423769    | Boccola                  | Bush                         | Buchse                 | Bague                  |              |
| 9          | 014399    | Vite                     | Screw                        | Schraube               | Vis                    |              |
| 10         | 961648    | Braccio interno sinistro | Arm                          | Arm                    | Bras                   |              |
| 11         | 014004    | Vite                     | Screw                        | Schraube               | Vis                    |              |
| 12         | 010006    | Rondella                 | Washer                       | Unterlegscheibe        | Rondelle               |              |
| 13         | 010002    | Rondella                 | Washer                       | Unterlegscheibe        | Rondelle               |              |
| <b>420</b> | 14        | 961507                   | Barra rinforzo rullo DX      | Bar                    | Stab                   | Barre        |
| <b>470</b> |           | 961508                   | Barra rinforzo rullo DX      | Bar                    | Stab                   | Barre        |
| <b>520</b> |           | 961509                   | Barra rinforzo rullo DX      | Bar                    | Stab                   | Barre        |
| 15         | 423790    | Taschetta rullo destra   | R.H. Attach. arm fulcrum lug | Rechts Befestigungsarm | Fixation de bras droit |              |
| 16         | 014176    | Vite                     | Screw                        | Schraube               | Vis                    |              |
| 17         | 013019    | Spina                    | Pin                          | Stift                  | Goupille               |              |
| 18         | 014254    | Vite                     | Screw                        | Schraube               | Vis                    |              |
| 19         | 661401    | Fusello                  | Stub axle                    | Flansch                | Fusee                  |              |
| 20         | 004030    | Dado                     | Nut                          | Mutter                 | Ecrou                  |              |
| <b>420</b> | 21        | 961951                   | Rullo gabbia                 | Cage roller            | Käfigwalze             | Rouleau cage |
| <b>470</b> |           | 961952                   | Rullo gabbia                 | Cage roller            | Käfigwalze             | Rouleau cage |
| <b>520</b> |           | 961953                   | Rullo gabbia                 | Cage roller            | Käfigwalze             | Rouleau cage |
| 22         | 004054    | Dado                     | Nut                          | Mutter                 | Ecrou                  |              |
| 23         | 661403    | Bussola                  | Bush                         | Buchse                 | Bague                  |              |
| 24         | 912687    | Braccio                  | Arm                          | Arm                    | Bras                   |              |
| 25         | 099018    | Gruppo parapolvere       | Dust cover                   | Staubdeckel            | Cache anti poussière   |              |
| 26         | 008005    | Ingrassatore             | Grease nipple                | Fettbuechse            | Graisneur              |              |
| 27         | 421604    | Supporto                 | Support                      | Halterung              | Support                |              |
| 28         | 003051    | Cuscinetto               | Bearing                      | Kugellager             | Roulement              |              |
| 29         | 001006    | Anello di arresto        | Stop ring                    | Sperring               | Bague d'arret          |              |



RULLO GABBIA Ø 500 DESTRO • R.H. CAGE ROLLER Ø 500  
KÄFIGWALZE Ø 500 RECHTS • ROULEAU CAGE Ø 500 DROITE

Tav.  
Tab.  
Taf.

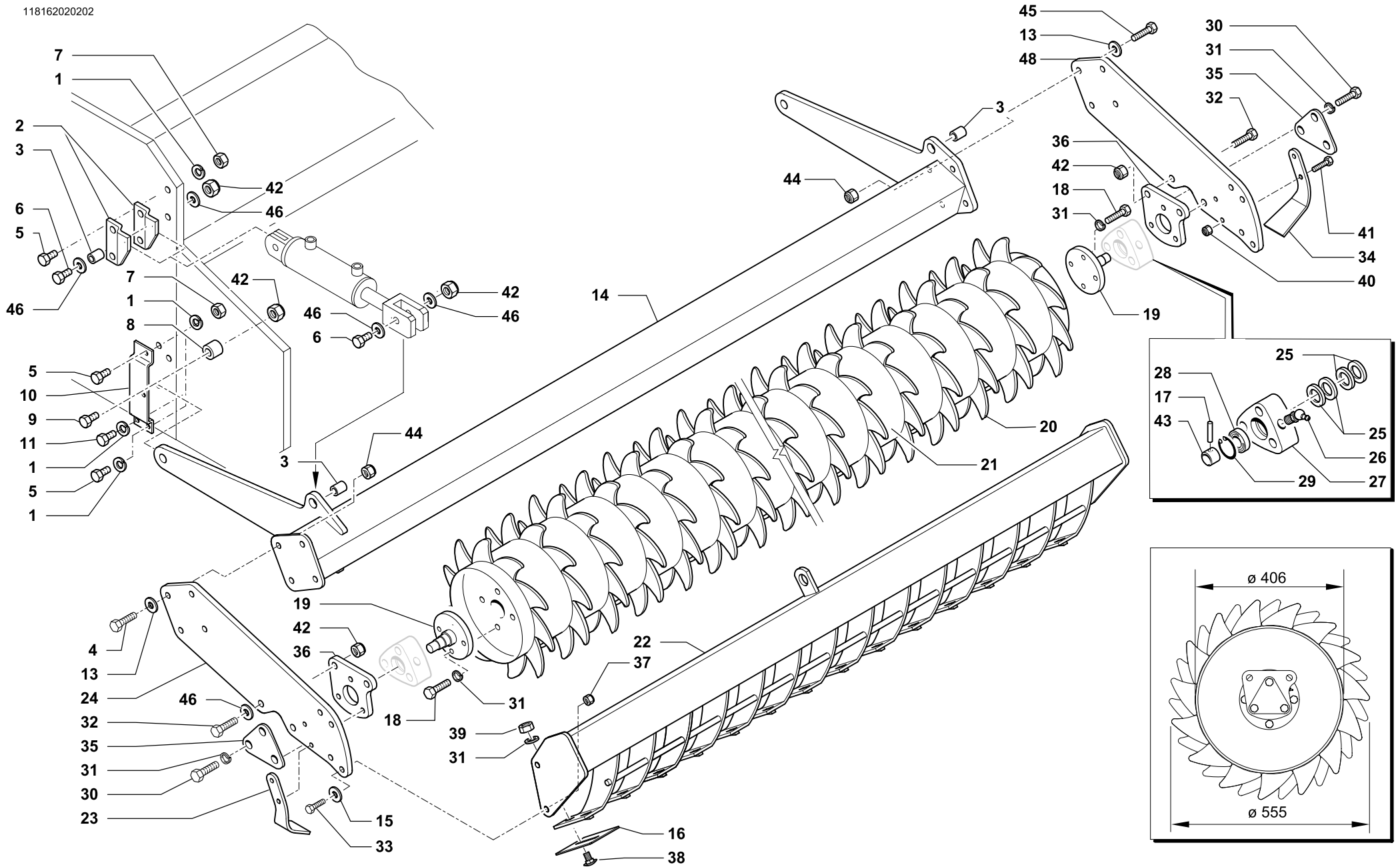
**118165**

Rev.

**02**

**0202**

| RIF. | N. CODICE | DENOMINAZIONE | DENOMINATION | BEZEICHNUNG  | DENOMINATION |
|------|-----------|---------------|--------------|--------------|--------------|
| 30   | 014145    | Vite          | Screw        | Schraube     | Vis          |
| 31   | 011003    | Grower        | Grower       | Federscheibe | Grower       |
| 32   | 014192    | Vite          | Screw        | Schraube     | Vis          |
| 33   | 004072    | Dado          | Nut          | Mutter       | Ecrou        |
| 34   | 661402    | Piastra       | Plate        | Plate        | Platte       |
| 35   | 612372    | Chiusura      | Plate        | Plate        | Platte       |



RULLO PACKER Ø 406 SINISTRO • L.H. PACKER ROLLER Ø 406  
 PACKERWALZE Ø 406 LINKS • ROULEAU PACKER Ø 406 GAUCHE



|                      |               |      |                |
|----------------------|---------------|------|----------------|
| Tav.<br>Tab.<br>Taf. | <b>118162</b> | Rev. | <b>02 0202</b> |
|----------------------|---------------|------|----------------|



RULLO PACKER Ø 406 SINISTRO • L.H. PACKER ROLLER Ø 406  
PACKERWALZE Ø 406 LINKS • ROULEAU PACKER Ø 406 GAUCHE

Tav.  
Tab.  
Taf.

118162

Rev.

02 0202

| RIF.       | N. CODICE | DENOMINAZIONE            | DENOMINATION                 | BEZEICHNUNG           | DENOMINATION            |
|------------|-----------|--------------------------|------------------------------|-----------------------|-------------------------|
| 1          | 011004    | Grower                   | Grower                       | Federscheibe          | Grower                  |
| 2          | 411528    | Piastra                  | Plate                        | Plate                 | Platte                  |
| 3          | 423833    | Distanziale              | Spacer                       | Distanzstueck         | Entretoise              |
| 4          | 014082    | Vite                     | Screw                        | Schraube              | Vis                     |
| 5          | 014019    | Vite                     | Screw                        | Schraube              | Vis                     |
| 6          | 014398    | Vite                     | Screw                        | Schraube              | Vis                     |
| 7          | 004004    | Dado                     | Nut                          | Mutter                | Ecrou                   |
| 8          | 423769    | Boccola                  | Bush                         | Buchse                | Bague                   |
| 9          | 014399    | Vite                     | Screw                        | Schraube              | Vis                     |
| 10         | 423791    | Taschetta rullo sinistra | L.H. Attach. arm fulcrum lug | Links Befestigungsarm | Fixation de bras gauche |
| 11         | 014004    | Vite                     | Screw                        | Schraube              | Vis                     |
| 12         | 961649    | Braccio interno destro   | Arm                          | Arm                   | Bras                    |
| 13         | 010002    | Rondella                 | Washer                       | Unterlegscheibe       | Rondelle                |
| <b>420</b> | 961504    | Barra rinforzo rullo SX  | Bar                          | Stab                  | Barre                   |
| <b>470</b> | 961505    | Barra rinforzo rullo SX  | Bar                          | Stab                  | Barre                   |
| <b>520</b> | 961506    | Barra rinforzo rullo SX  | Bar                          | Stab                  | Barre                   |
| 15         | 010002    | Rondella                 | Washer                       | Unterlegscheibe       | Rondelle                |
| 16         | 911601    | Raschietto               | Scraper                      | Schaber               | Racloir                 |
| 17         | 013019    | Spina                    | Pin                          | Stift                 | Goupille                |
| 18         | 014145    | Vite                     | Screw                        | Schraube              | Vis                     |
| 19         | 661401    | Fusello                  | Stub axle                    | Flansch               | Fusee                   |
| 20         | 412782    | Dente (da saldare)       | Tine (to be welded)          | Zahn (zum schweissen) | Dent (à souder)         |
| <b>420</b> | 961921    | Rullo packer             | Packer roller                | Packerwalze           | Rouleau packer          |
| <b>470</b> | 961922    | Rullo packer             | Packer roller                | Packerwalze           | Rouleau packer          |
| <b>520</b> | 961923    | Rullo packer             | Packer roller                | Packerwalze           | Rouleau packer          |
| <b>420</b> | 961911    | Barra porta raschietti   | Scratcher support            | Schaberhalter         | Porte-racloir           |
| <b>470</b> | 961912    | Barra porta raschietti   | Scratcher support            | Schaberhalter         | Porte-racloir           |
| <b>520</b> | 961913    | Barra porta raschietti   | Scratcher support            | Schaberhalter         | Porte-racloir           |
| 23         | 911629    | Raschietto laterale SX   | Scraper                      | Schaber               | Racloir                 |
| 24         | 912687    | Braccio                  | Arm                          | Arm                   | Bras                    |
| 25         | 099018    | Gruppo parapolvere       | Dust cover                   | Staubdeckel           | Cache anti poussière    |
| 26         | 008005    | Ingrassatore             | Grease nipple                | Fettbuechse           | Graisneur               |
| 27         | 421604    | Supporto                 | Support                      | Halterung             | Support                 |





RULLO PACKER Ø 406 SINISTRO • L.H. PACKER ROLLER Ø 406  
PACKERWALZE Ø 406 LINKS • ROULEAU PACKER Ø 406 GAUCHE

Tav.  
Tab.  
Taf.

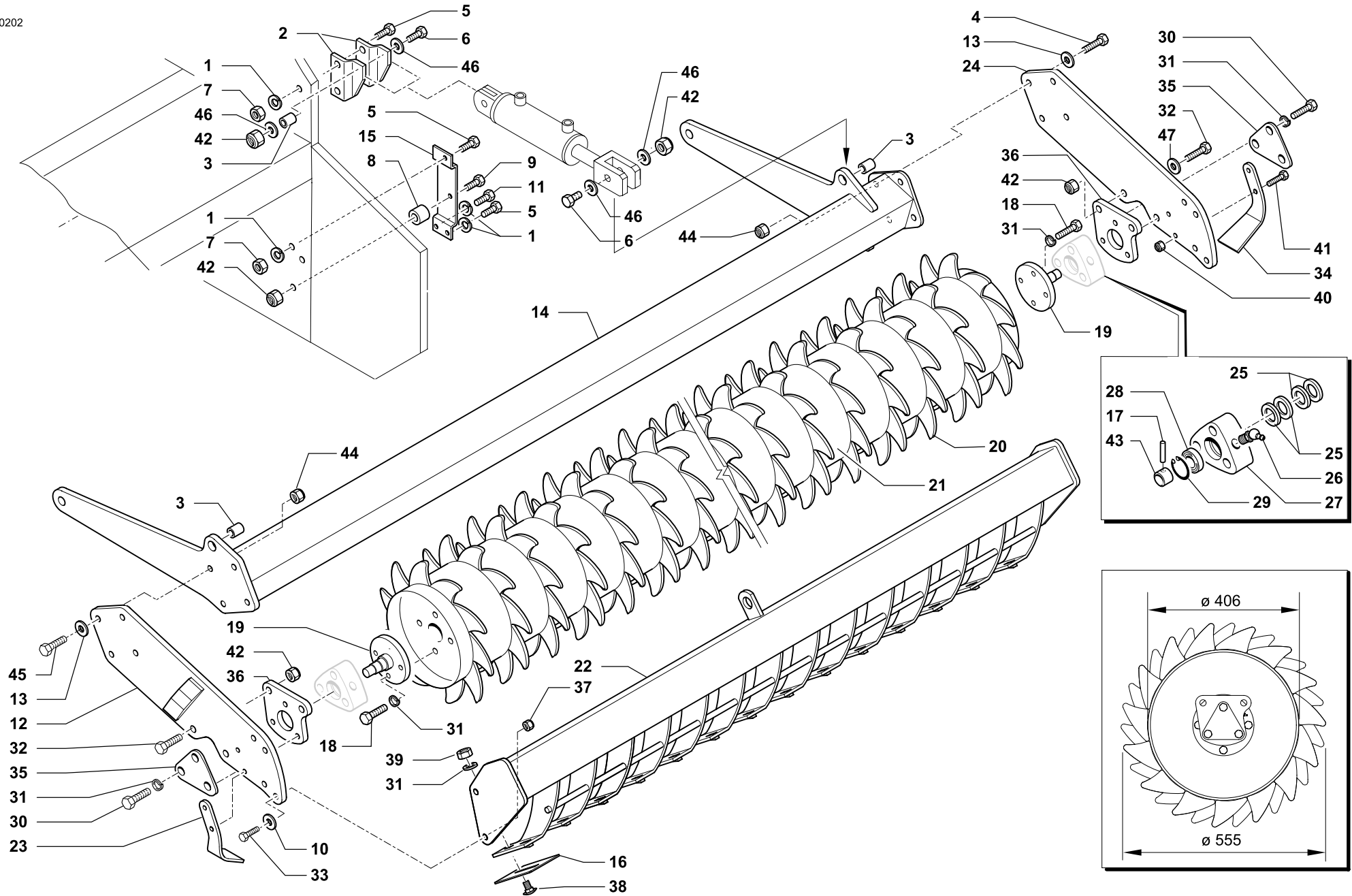
118162

Rev.

02

0202

| RIF. | N. CODICE | DENOMINAZIONE          | DENOMINATION | BEZEICHNUNG     | DENOMINATION  |
|------|-----------|------------------------|--------------|-----------------|---------------|
| 28   | 003051    | Cuscinetto             | Bearing      | Kugellager      | Roulement     |
| 29   | 001006    | Anello di arresto      | Stop ring    | Sperring        | Bague d'arret |
| 30   | 014145    | Vite                   | Screw        | Schraube        | Vis           |
| 31   | 011003    | Grower                 | Grower       | Federscheibe    | Grower        |
| 32   | 014192    | Vite                   | Screw        | Schraube        | Vis           |
| 33   | 014019    | Vite                   | Screw        | Schraube        | Vis           |
| 34   | 911630    | Raschietto laterale DX | Scraper      | Schaber         | Racloir       |
| 35   | 612372    | Chiusura               | Plate        | Plate           | Platte        |
| 36   | 661402    | Piastra                | Plate        | Plate           | Platte        |
| 37   | 004054    | Dado                   | Nut          | Mutter          | Ecrou         |
| 38   | 014386    | Vite                   | Screw        | Schraube        | Vis           |
| 39   | 004003    | Dado                   | Nut          | Mutter          | Ecrou         |
| 40   | 004084    | Dado                   | Nut          | Mutter          | Ecrou         |
| 41   | 014214    | Vite                   | Screw        | Schraube        | Vis           |
| 42   | 004072    | Dado                   | Nut          | Mutter          | Ecrou         |
| 43   | 661403    | Bussola                | Bush         | Buchse          | Bague         |
| 44   | 004054    | Dado                   | Nut          | Mutter          | Ecrou         |
| 45   | 014176    | Vite                   | Screw        | Schraube        | Vis           |
| 46   | 010006    | Rondella               | Washer       | Unterlegscheibe | Rondelle      |



RULLO PACKER Ø 406 DESTRO • R.H. PACKER ROLLER Ø 406  
 PACKERWALZE Ø 406 RECHTS • ROULEAU PACKER Ø 406 DROITE



|                      |               |      |                |
|----------------------|---------------|------|----------------|
| Tav.<br>Tab.<br>Taf. | <b>118163</b> | Rev. | <b>02 0202</b> |
|----------------------|---------------|------|----------------|



RULLO PACKER Ø 406 DESTRO • R.H. PACKER ROLLER Ø 406  
PACKERWALZE Ø 406 RECHTS • ROULEAU PACKER Ø 406 DROITE

Tav.  
Tab.  
Taf.

118163

Rev.

02 0202

| RIF.       | N. CODICE | DENOMINAZIONE            | DENOMINATION                 | BEZEICHNUNG            | DENOMINATION           |
|------------|-----------|--------------------------|------------------------------|------------------------|------------------------|
| 1          | 011004    | Grower                   | Grower                       | Federscheibe           | Grower                 |
| 2          | 411529    | Piastra                  | Plate                        | Plate                  | Platte                 |
| 3          | 423833    | Distanziale              | Spacer                       | Distanzstueck          | Entretoise             |
| 4          | 014082    | Vite                     | Screw                        | Schraube               | Vis                    |
| 5          | 014019    | Vite                     | Screw                        | Schraube               | Vis                    |
| 6          | 014398    | Vite                     | Screw                        | Schraube               | Vis                    |
| 7          | 004004    | Dado                     | Nut                          | Mutter                 | Ecrou                  |
| 8          | 423769    | Boccola                  | Bush                         | Buchse                 | Bague                  |
| 9          | 014399    | Vite                     | Screw                        | Schraube               | Vis                    |
| 10         | 010002    | Rondella                 | Washer                       | Unterlegscheibe        | Rondelle               |
| 11         | 014004    | Vite                     | Screw                        | Schraube               | Vis                    |
| 12         | 961648    | Braccio interno sinistro | Arm                          | Arm                    | Bras                   |
| 13         | 010002    | Rondella                 | Washer                       | Unterlegscheibe        | Rondelle               |
| <b>420</b> | 14        | 961507                   | Barra rinforzo rullo DX      | Bar                    | Barre                  |
| <b>470</b> |           | 961508                   | Barra rinforzo rullo DX      | Bar                    | Barre                  |
| <b>520</b> |           | 961509                   | Barra rinforzo rullo DX      | Bar                    | Barre                  |
| 15         | 423790    | Taschetta rullo destra   | R.H. Attach. arm fulcrum lug | Rechts Befestigungsarm | Fixation de bras droit |
| 16         | 911601    | Raschietto               | Scraper                      | Schaber                | Racloir                |
| 17         | 013019    | Spina                    | Pin                          | Stift                  | Goupille               |
| 18         | 014145    | Vite                     | Screw                        | Schraube               | Vis                    |
| 19         | 661401    | Fusello                  | Stub axle                    | Flansch                | Fusee                  |
| 20         | 412782    | Dente (da saldare)       | Tine (to be welded)          | Zahn (zum schweissen)  | Dent (à souder)        |
| <b>420</b> | 21        | 961921                   | Rullo packer                 | Packer roller          | Rouleau packer         |
| <b>470</b> |           | 961922                   | Rullo packer                 | Packer roller          | Rouleau packer         |
| <b>520</b> |           | 961923                   | Rullo packer                 | Packer roller          | Rouleau packer         |
| <b>420</b> | 22        | 961911                   | Barra porta raschietti       | Scratcher support      | Porte-racloir          |
| <b>470</b> |           | 961912                   | Barra porta raschietti       | Scratcher support      | Porte-racloir          |
| <b>520</b> |           | 961913                   | Barra porta raschietti       | Scratcher support      | Porte-racloir          |
| 23         | 911629    | Raschietto laterale SX   | Scraper                      | Schaber                | Racloir                |
| 24         | 912687    | Braccio                  | Arm                          | Arm                    | Bras                   |
| 25         | 099018    | Gruppo parapolvere       | Dust cover                   | Staubdeckel            | Cache anti poussière   |
| 26         | 008005    | Ingrassatore             | Grease nipple                | Fettbuechse            | Graisneur              |
| 27         | 421604    | Supporto                 | Support                      | Halterung              | Support                |

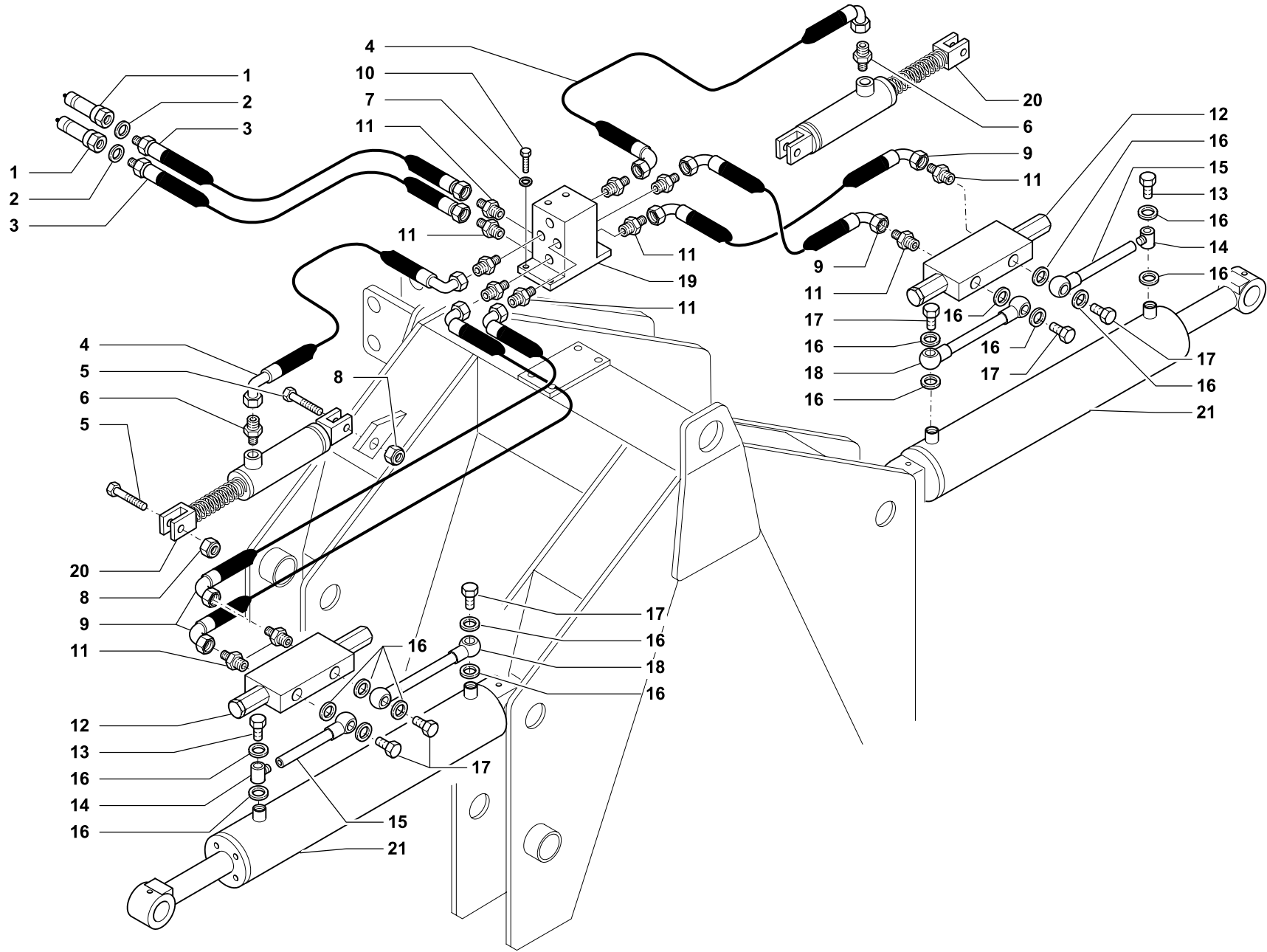


RULLO PACKER Ø 406 DESTRO • R.H. PACKER ROLLER Ø 406  
PACKERWALZE Ø 406 RECHTS • ROULEAU PACKER Ø 406 DROITE

Tav.  
Tab.  
Taf. **118163**

Rev. **02 0202**

| RIF. | N. CODICE | DENOMINAZIONE          | DENOMINATION | BEZEICHNUNG     | DENOMINATION  |
|------|-----------|------------------------|--------------|-----------------|---------------|
| 28   | 003051    | Cuscinetto             | Bearing      | Kugellager      | Roulement     |
| 29   | 001006    | Anello di arresto      | Stop ring    | Sperring        | Bague d'arret |
| 30   | 014145    | Vite                   | Screw        | Schraube        | Vis           |
| 31   | 011003    | Grower                 | Grower       | Federscheibe    | Grower        |
| 32   | 014192    | Vite                   | Screw        | Schraube        | Vis           |
| 33   | 014019    | Vite                   | Screw        | Schraube        | Vis           |
| 34   | 911630    | Raschietto laterale DX | Scraper      | Schaber         | Racloir       |
| 35   | 612372    | Chiusura               | Plate        | Plate           | Platte        |
| 36   | 661402    | Piastra                | Plate        | Plate           | Platte        |
| 37   | 004054    | Dado                   | Nut          | Mutter          | Ecrou         |
| 38   | 014386    | Vite                   | Screw        | Schraube        | Vis           |
| 39   | 004003    | Dado                   | Nut          | Mutter          | Ecrou         |
| 40   | 004084    | Dado                   | Nut          | Mutter          | Ecrou         |
| 41   | 014214    | Vite                   | Screw        | Schraube        | Vis           |
| 42   | 004072    | Dado                   | Nut          | Mutter          | Ecrou         |
| 43   | 661403    | Bussola                | Bush         | Buchse          | Bague         |
| 44   | 004054    | Dado                   | Nut          | Mutter          | Ecrou         |
| 45   | 014176    | Vite                   | Screw        | Schraube        | Vis           |
| 46   | 010006    | Rondella               | Washer       | Unterlegscheibe | Rondelle      |

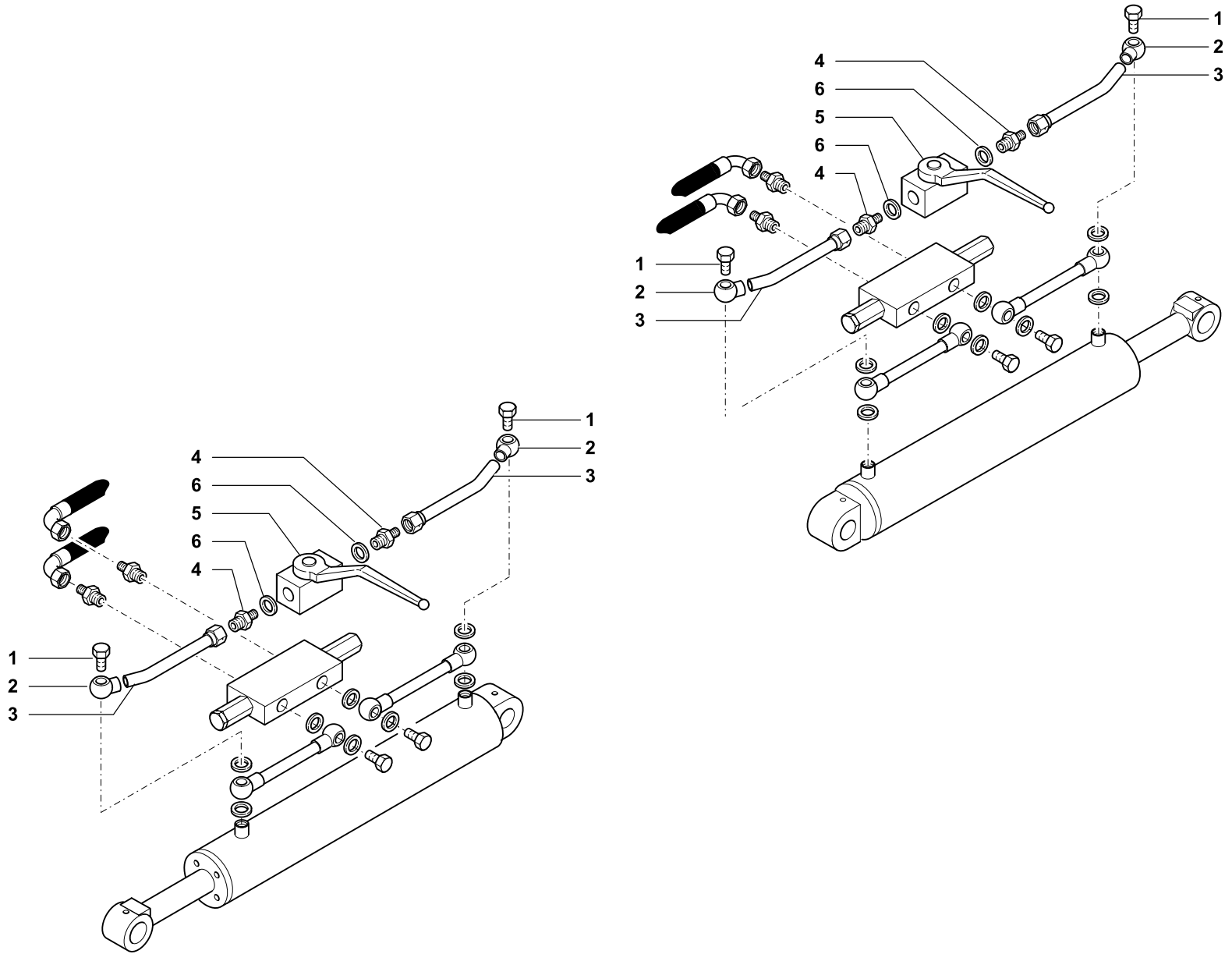


IMPIANTO IDRAULICO SOLLEVAMENTO FRESE/P • HYDRAULIC ADJUSTMENT FOR FOLDING ROTARY TILLERS • HYDRAULISCHE HÖHENVERSTELLANGE FÜR KLAPPBARE FRÄSEN • SYSTÈME HYDRAULIQUE DE SOULÈVEMENT POUR FRAISE REPLIABLE

|                      |               |      |                |
|----------------------|---------------|------|----------------|
| Tav.<br>Tab.<br>Taf. | <b>118519</b> | Rev. | <b>00 0400</b> |
|----------------------|---------------|------|----------------|



| RIF. | N. CODICE | DENOMINAZIONE              | DENOMINATION     | BEZEICHNUNG        | DENOMINATION      |
|------|-----------|----------------------------|------------------|--------------------|-------------------|
| 1    | 022082    | Innesto rapido             | Shap-on coupling | Baionett kupplung  | Joint a baionette |
| 2    | 022087    | Rosetta di rame            | Washer           | Unterlegscheibe    | Rondelle          |
| 3    | 023125    | Tubo                       | Hose             | Schlauch           | Tuyau             |
| 4    | 023119    | Tubo                       | Hose             | Schlauch           | Tuyau             |
| 5    | 014192    | Vite                       | Screw            | Schraube           | Vis               |
| 6    | 022130    | Raccordo                   | Connection       | Anschluss          | Raccord           |
| 7    | 010015    | Rondella                   | Washer           | Unterlegscheibe    | Rondelle          |
| 8    | 004072    | Dado                       | Nut              | Mutter             | Ecrou             |
| 9    | 023123    | Tubo                       | Hose             | Schlauch           | Tuyau             |
| 10   | 014032    | Vite                       | Screw            | Schraube           | Vis               |
| 11   | 022129    | Raccordo                   | Connection       | Anschluss          | Raccord           |
| 12   | 021058    | Valvola di blocco          | Stop valve       | Sperrventil        | Suopape d'arret   |
| 13   | 022175    | Vite strozzata             | Screw            | Schraube           | Vis               |
| 14   | 022151    | Raccordo                   | Connection       | Anschluss          | Raccord           |
| 15   | 621718    | Tubo                       | Hose             | Schlauch           | Tuyau             |
| 16   | 022086    | Rosetta di rame            | Washer           | Unterlegscheibe    | Rondelle          |
| 17   | 022070    | Vite forata                | Screw            | Schraube           | Vis               |
| 18   | 621721    | Tubo                       | Hose             | Schlauch           | Tuyau             |
| 19   | 662528    | Blocchetto ripartitore     | Connection block | Kontrolmechanismus | Distributeur      |
| 20   | 671777    | Martinetto completo        | Complete jack    | Komplette winde    | Vérin complet     |
| 21   | 671776    | Martinetto di sollevamento | Complete jack    | Komplette winde    | Vérin complet     |



KIT SISTEMA FLOTTANTE • FLOATING SYSTEM  
SCHWINGSYSTEM • KIT SYSTEME FLOTANT

|      |        |      |         |
|------|--------|------|---------|
| Tav. | 120542 | Rev. | 00 0702 |
| Tab. |        |      |         |
| Taf. |        |      |         |

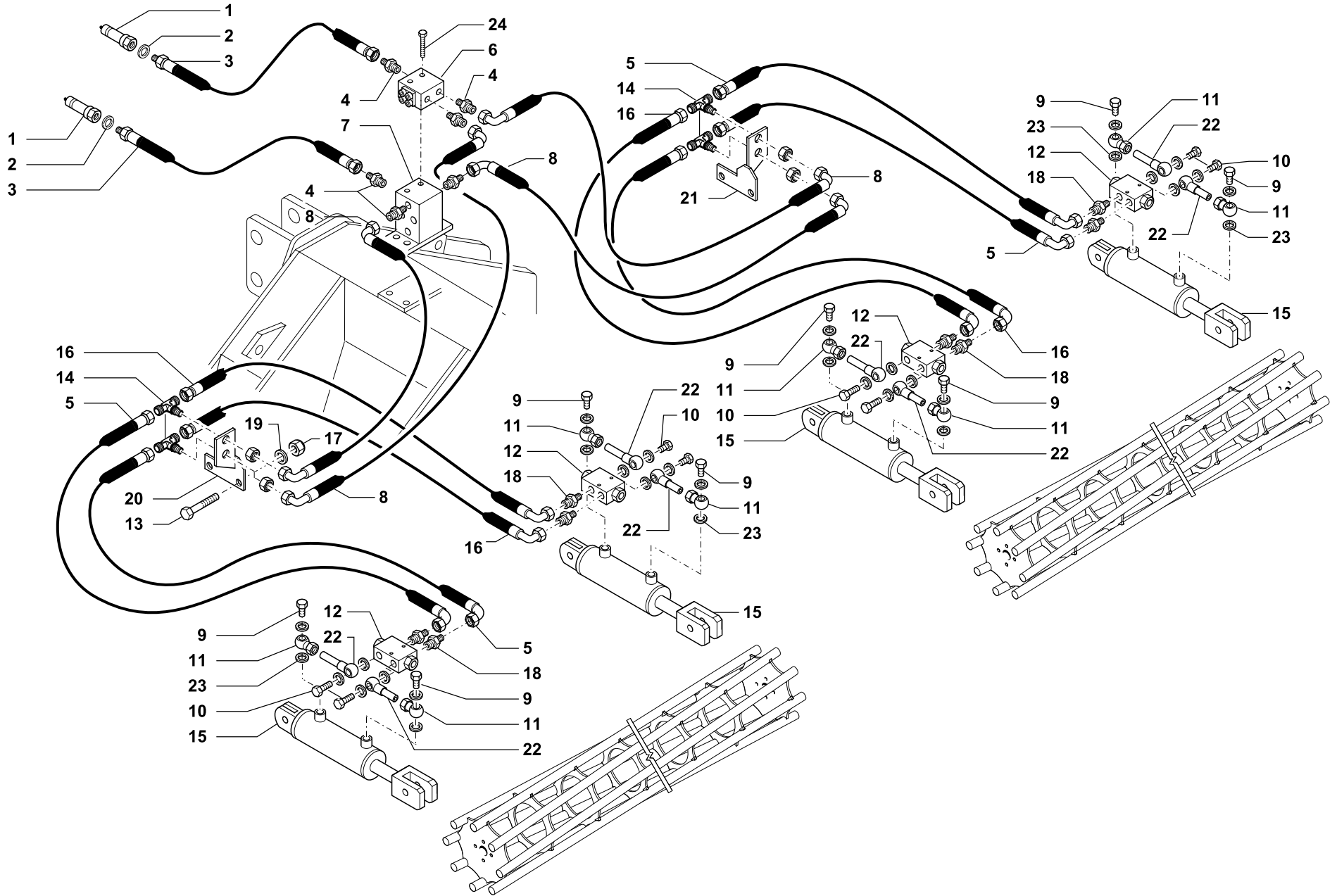


KIT SISTEMA FLOTTANTE • FLOATING SYSTEM  
SCHWINGSYSTEM • KIT SYSTEME FLOTANT

|                      |               |      |           |             |
|----------------------|---------------|------|-----------|-------------|
| Tav.<br>Tab.<br>Taf. | <b>120542</b> | Rev. | <b>00</b> | <b>0702</b> |
|----------------------|---------------|------|-----------|-------------|

| RIF. | N. CODICE     | DENOMINAZIONE         | DENOMINATION    | BEZEICHNUNG       | DENOMINATION        |
|------|---------------|-----------------------|-----------------|-------------------|---------------------|
| 1    | 022166        | Vite forata           | Screw           | Schraube          | Vis                 |
| 2    | 022151        | Occhio                | Pipe fitting    | Rohrverschraubung | Raccord             |
| 3    | 021181        | Tubo                  | Hose            | Schlauch          | Tuyau               |
| 4    | 022129        | Raccordo              | Connection      | Anschluss         | Raccord             |
| 5    | 021172        | Rubinetto             | Tap             | Ablasshahn        | Robinet             |
| 6    | 022086        | Rondella rame         | Washer          | Unterlegscheibe   | Rondelle            |
|      | <b>971760</b> | Kit sistema flottante | Floating system | Schwingsystem     | Kit systeme flotant |





IMPIANTO IDRAULICO SOLLEVAMENTO RULLI • HYDRAULIC SYSTEM FOR ROLLER LIFTING  
 HYDRAULISCHE ANLAGE FÜR WALZE BETEETIGUNG • INSTALLATION HYDRAULIQUE REGLAGE ROULEAUX

|                      |               |      |                |
|----------------------|---------------|------|----------------|
| Tav.<br>Tab.<br>Taf. | <b>118520</b> | Rev. | <b>01 0902</b> |
|----------------------|---------------|------|----------------|

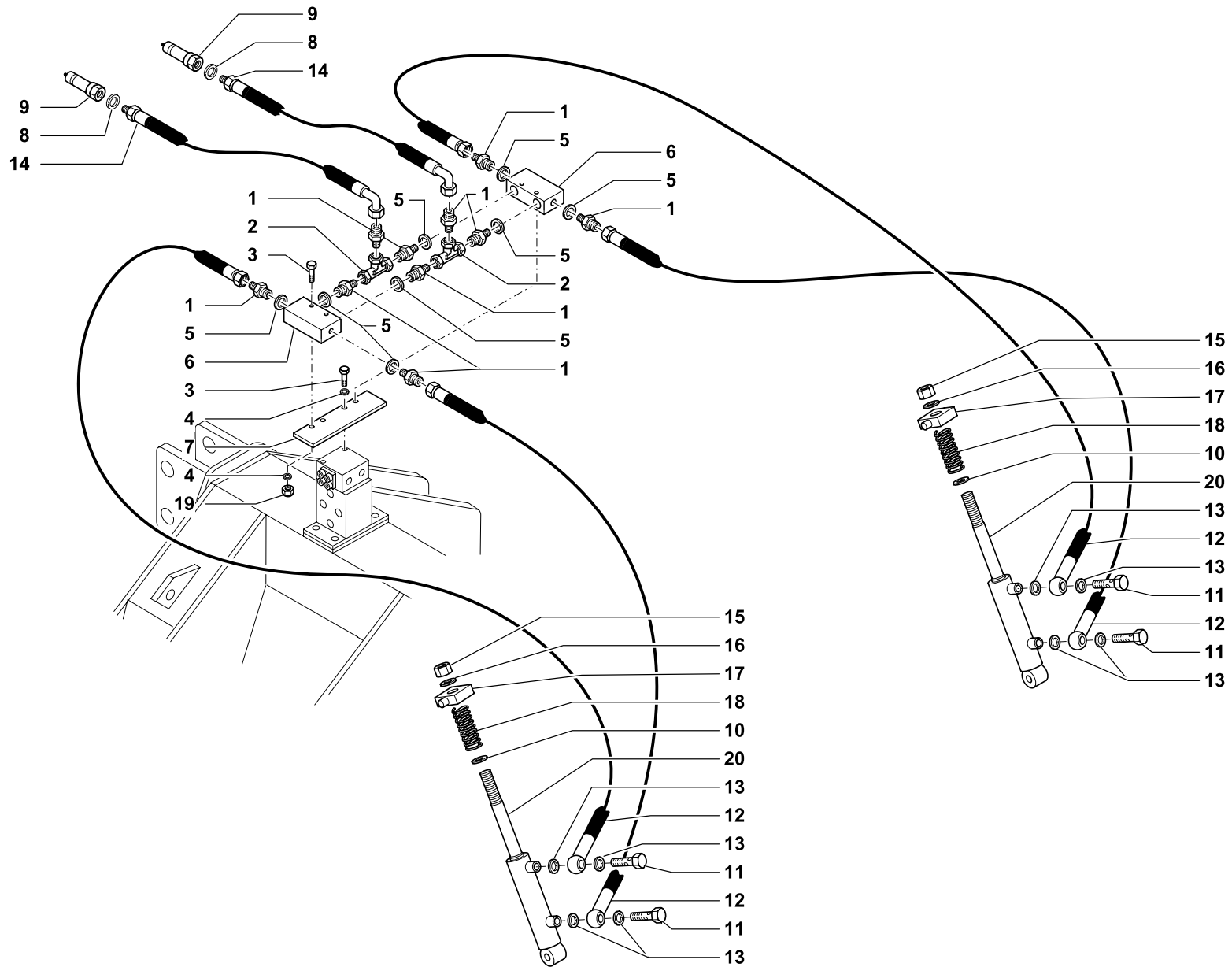


IMPIANTO IDRAULICO SOLLEVAMENTO RULLI • HYDRAULIC SYSTEM FOR ROLLER LIFTING  
HYDRAULISCHE ANLAGE FÜR WALZE BETEETIGUNG • INSTALLATION HYDRAULIQUE REGLAGE ROULEAUX

Tav.  
Tab.  
Taf. **118520**

Rev. **01 0902**

| RIF.           | N. CODICE     | DENOMINAZIONE              | DENOMINATION             | BEZEICHNUNG        | DENOMINATION        |
|----------------|---------------|----------------------------|--------------------------|--------------------|---------------------|
| 1              | 022082        | Innesto rapido             | Shap-on coupling         | Baionett kupplung  | Joint a baionette   |
| 2              | 022087        | Rosetta di rame            | Washer                   | Unterlegscheibe    | Rondelle            |
| 3              | 023125        | Tubo                       | Hose                     | Schlauch           | Tuyau               |
| 4              | 022129        | Raccordo                   | Connection               | Anschluss          | Raccord             |
| <b>420-470</b> | 5             | 023154                     | Tubo                     | Hose               | Tuyau               |
| <b>520</b>     |               | 023152                     | Tubo                     | Hose               | Tuyau               |
| 6              | 021073        | Divisore di flusso         | Flow divider             | Flussteiler        | Diviseur de flux    |
| 7              | 662528        | Blocchetto ripartitore     | Connection block         | Kontrolmechanismus | Distributeur        |
| 8              | 023153        | Tubo                       | Hose                     | Schlauch           | Tuyau               |
| 9              | 022175        | Vite strozzata             | Screw                    | Schraube           | Vis                 |
| 10             | 022070        | Vite cava                  | Screw                    | Schraube           | Vis                 |
| 11             | 022151        | Raccordo                   | Connection               | Anschluss          | Raccord             |
| 12             | 021087        | Valvola di blocco          | Stop valve               | Sperrventil        | Suopape d'arret     |
| 13             | 014176        | Vite                       | Screw                    | Schraube           | Vis                 |
| 14             | 022178        | Raccordo                   | Connection               | Anschluss          | Raccord             |
| 15             | <b>471444</b> | Martinetto completo        | Complete jack            | Komplette winde    | Vérin complet       |
|                | <b>471842</b> | Kit guarnizioni martinetto | Hydraulic ram seal group | Dichtungsgruppe    | Groupe d'étancheite |
| 16             | 023152        | Tubo                       | Hose                     | Schlauch           | Tuyau               |
| 17             | 004054        | Dado                       | Nut                      | Mutter             | Ecrou               |
| 18             | 022129        | Raccordo                   | Connection               | Anschluss          | Raccord             |
| 19             | 010002        | Rondella                   | Washer                   | Unterlegscheibe    | Rondelle            |
| 20             | 461098        | Supporto valvola sinistro  | Support                  | Halterung          | Support             |
| 21             | 461099        | Supporto valvola destro    | Support                  | Halterung          | Support             |
| 22             | 621736        | Tubo valvola               | Hose                     | Schlauch           | Tuyau               |
| 23             | 022086        | Rosetta di rame            | Washer                   | Unterlegscheibe    | Rondelle            |
| 24             | 014122        | Vite                       | Screw                    | Schraube           | Vis                 |
|                | <b>971534</b> | Kit valvole di blocco      | Kit stop valve           | Sperrventil        | Suopape d'arret     |



**KIT MARTINETTI IDRAULICI SOLLEVAMENTO VENTOLA • HYDRAULIC RAMS KIT FOR TAILGATE ADJUSTMENT  
 SATZ HYDRAULISCHER WINDEN ZUR HECKKLAPPENVERSTELLUNG • REGLAGE HYDRAULIQUE DU TABLIER**

Tav. **118521**  
 Tab.  
 Taf.

Rev. **00 0400**



KIT MARTINETTI IDRAULICI SOLLEVAMENTO VENTOLA • HYDRAULIC RAMS KIT FOR TAILGATE ADJUSTMENT  
SATZ HYDRAULISCHER WINDEN ZUR HECKKLAPPENVERSTELLUNG • REGLAGE HYDRAULIQUE DU TABLIER

Tav.  
Tab.  
Taf.

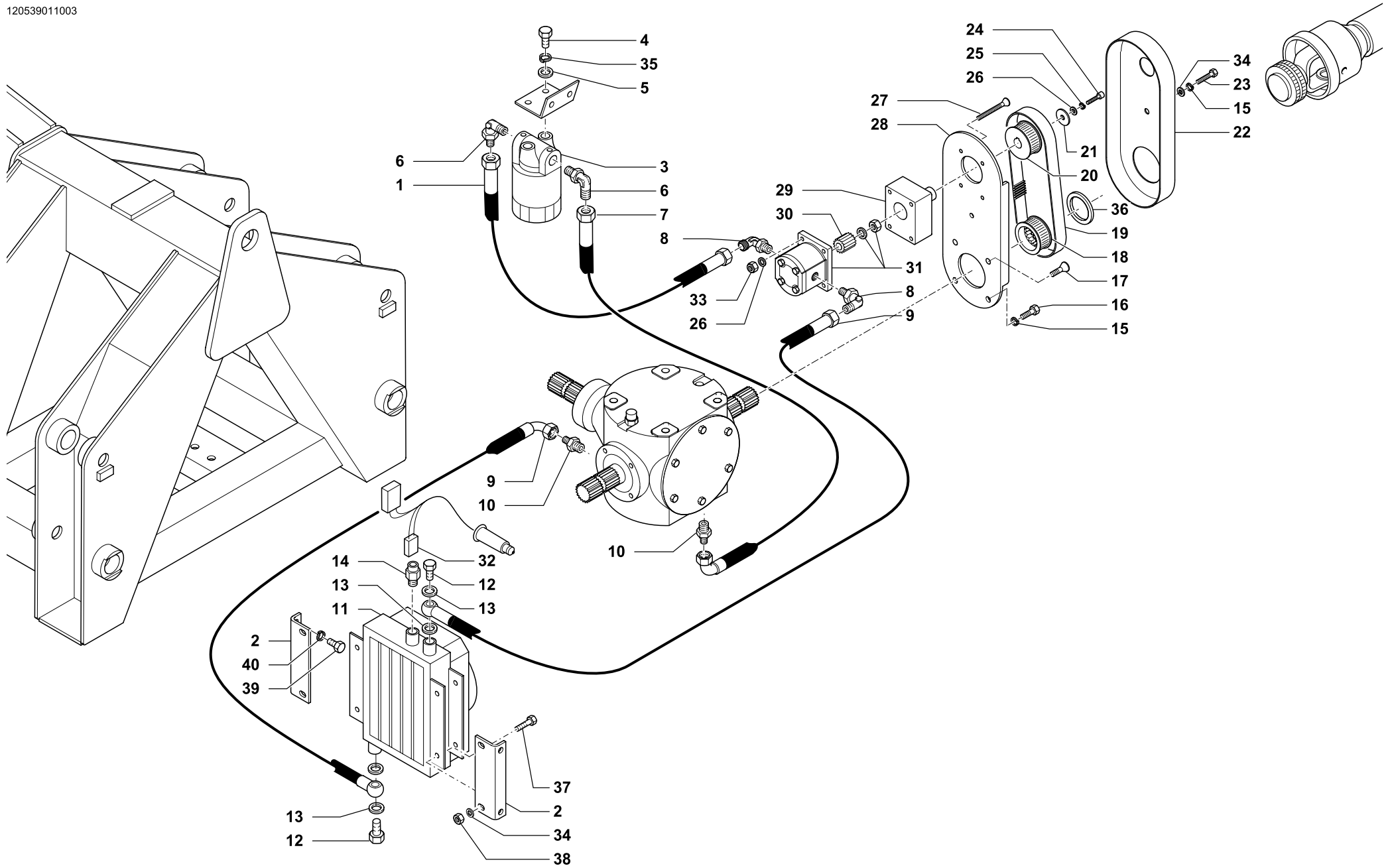
118521

Rev.

00

0400

| RIF. | N. CODICE     | DENOMINAZIONE             | DENOMINATION     | BEZEICHNUNG       | DENOMINATION      |
|------|---------------|---------------------------|------------------|-------------------|-------------------|
| 1    | 022104        | Riduzione                 | Nipple           | Nippel            | Reduction         |
| 2    | 023142        | Raccordo                  | Connection       | Anschluss         | Raccord           |
| 3    | 014121        | Vite                      | Screw            | Schraube          | Vis               |
| 4    | 010015        | Rondella                  | Washer           | Unterlegscheibe   | Rondelle          |
| 5    | 022085        | Rondella                  | Washer           | Unterlegscheibe   | Rondelle          |
| 6    | 021069        | Valvola controllo discesa | Stop valve       | Sperrventil       | Suopape d'arret   |
| 7    | 421767        | Supporto                  | Support          | Halterung         | Support           |
| 8    | 022087        | Rondella                  | Washer           | Unterlegscheibe   | Rondelle          |
| 9    | 022082        | Innesto rapido            | Shap-on coupling | Baionett kupplung | Joint a baionette |
| 10   | 010012        | Rondella                  | Washer           | Unterlegscheibe   | Rondelle          |
| 11   | 022175        | Vite strozzata            | Screw            | Schraube          | Vis               |
| 12   | 023060        | Tubo                      | Hose             | Schlauch          | Tuyau             |
| 13   | 022086        | Rondella                  | Washer           | Unterlegscheibe   | Rondelle          |
| 14   | 023064        | Tubo                      | Hose             | Schlauch          | Tuyau             |
| 15   | 004073        | Dado                      | Nut              | Mutter            | Ecrou             |
| 16   | 010009        | Rondella                  | Washer           | Unterlegscheibe   | Rondelle          |
| 17   | 923587        | Supporto                  | Support          | Halterung         | Support           |
| 18   | 923505        | Molla                     | Spring           | Feder             | Ressort           |
| 19   | 004023        | Dado                      | Nut              | Mutter            | Ecrou             |
| 20   | <b>971525</b> | Martinetto completo       | Complete jack    | Komplette winde   | Vérin complet     |



KIT DI RAFFREDDAMENTO • COOLING KIT  
 KUEHLUNGSKIT • KIT DE REFRROIDISSEMENT

|      |               |      |                |
|------|---------------|------|----------------|
| Tav. | <b>120539</b> | Rev. | <b>01 1003</b> |
| Tab. |               |      |                |
| Taf. |               |      |                |



KIT DI RAFFREDDAMENTO • COOLING KIT  
KUEHLUNGSKIT • KIT DE REFRROIDISSEMENT

Tav.  
Tab.  
Taf.

120539

Rev.

01

1003

| RIF. | N. CODICE | DENOMINAZIONE      | DENOMINATION     | BEZEICHNUNG       | DENOMINATION     |
|------|-----------|--------------------|------------------|-------------------|------------------|
| 1    | 023115    | Tubo               | Hose             | Schlauch          | Tuyau            |
| 2    | 612399    | Supporto           | Support          | Halterung         | Support          |
| 3    | 021052    | Filtro             | Filter           | Filer             | Filtre           |
| 4    | 014005    | Vite               | Screw            | Schraube          | Vis              |
| 5    | 010023    | Rondella           | Washer           | Unterlegscheibe   | Rondelle         |
| 6    | 022119    | Raccordo           | Connection       | Anschluss         | Raccord          |
| 7    | 023175    | Tubo               | Hose             | Schlauch          | Tuyau            |
| 8    | 022120    | Raccordo           | Connection       | Anschluss         | Raccord          |
| 9    | 023130    | Tubo               | Hose             | Schlauch          | Tuyau            |
| 10   | 022159    | Raccordo           | Connection       | Anschluss         | Raccord          |
| 11   | 021055    | Scambiatore        | Exchange         | Waermeaustauscher | Echangeur        |
| 12   | 022030    | Vite               | Screw            | Schraube          | Vis              |
| 13   | 010015    | Rondella           | Washer           | Unterlegscheibe   | Rondelle         |
| 14   | 021061    | Termostato         | Thermostat       | Thermostat        | Thermostat       |
| 15   | 011032    | Grower             | Grower           | Federscheibe      | Grower           |
| 16   | 014007    | Vite               | Screw            | Schraube          | Vis              |
| 17   | 014320    | Vite               | Screw            | Schraube          | Vis              |
| 18   | 423606    | Puleggia inferiore | Pulley           | Riemenscheibe     | Poulie           |
| 19   | 021083    | Cinghia            | Trasmission belt | Gurt              | Courroie         |
| 20   | 423605    | Puleggia superiore | Pulley           | Riemenscheibe     | Poulie           |
| 21   | 010035    | Rondella           | Washer           | Unterlegscheibe   | Rondelle         |
| 22   | 461090    | Coperchio carter   | Cover            | Deckel            | Couvercle        |
| 23   | 014026    | Vite               | Screw            | Schraube          | Vis              |
| 24   | 014306    | Vite               | Screw            | Schraube          | Vis              |
| 25   | 011009    | Grower             | Grower           | Federscheibe      | Grower           |
| 26   | 010015    | Rondella           | Washer           | Unterlegscheibe   | Rondelle         |
| 27   | 014393    | Vite               | Screw            | Schraube          | Vis              |
| 28   | 421535    | Supporto carter    | Support          | Halterung         | Support          |
| 29   | 021078    | Supporto           | Support          | Halterung         | Support          |
| 30   | 021079    | Semigiunto         | Hub              | Moyeu             | Nabe             |
| 32   | 027001    | Cavo alimentatore  | Cable feeder     | Speiseleitung     | Fil alimentation |
| 33   | 004083    | Dado               | Nut              | Mutter            | Ecrou            |
| 34   | 010004    | Rondella           | Washer           | Unterlegscheibe   | Rondelle         |
| 35   | 011001    | Grower             | Grower           | Federscheibe      | Grower           |



KIT DI RAFFREDDAMENTO • COOLING KIT  
KUEHLUNGSKIT • KIT DE REFROIDISSEMENT

Tav.  
Tab.  
Taf.

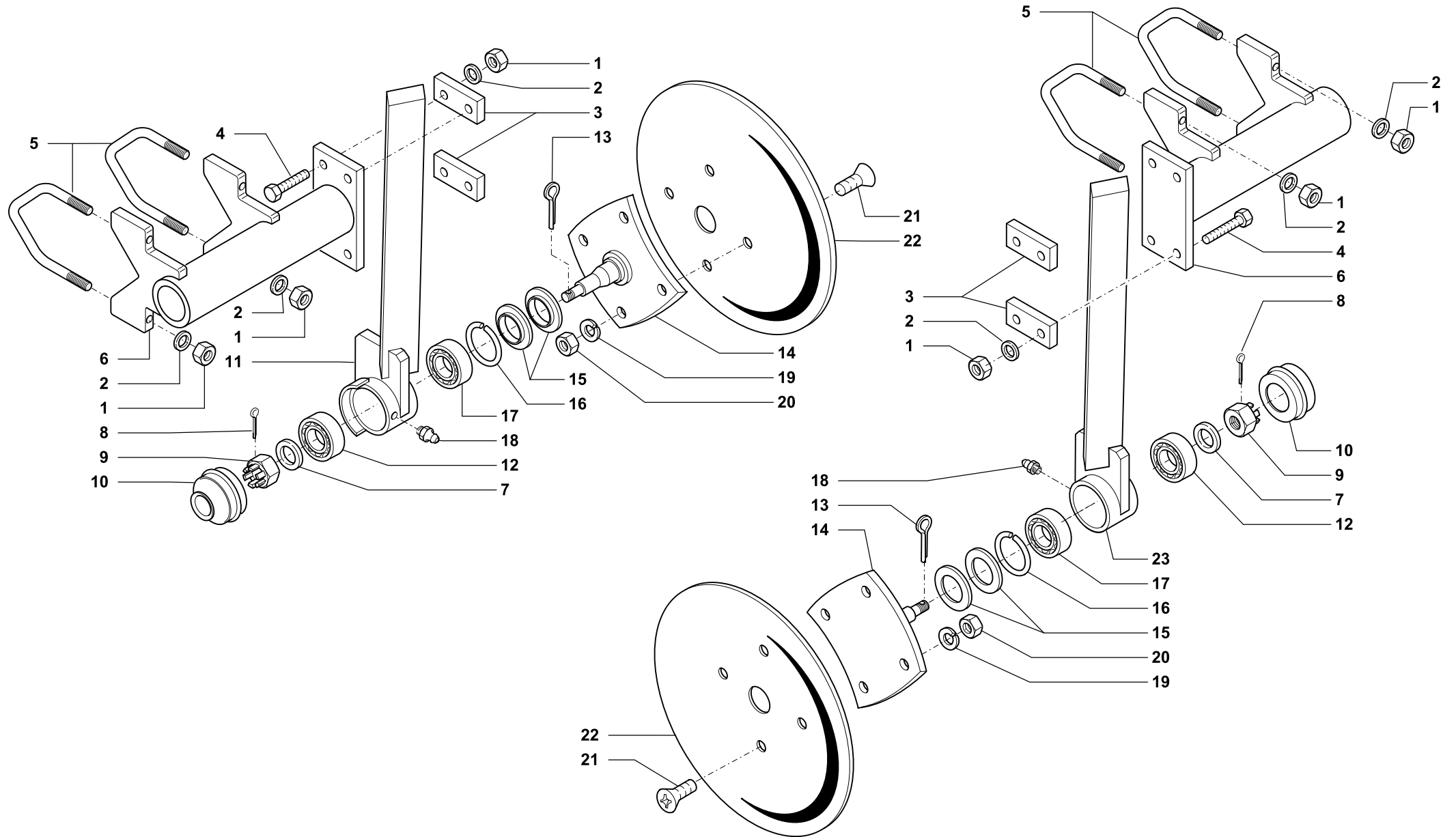
**120539**

Rev.

**01**

**1003**

| RIF. | N. CODICE     | DENOMINAZIONE      | DENOMINATION | BEZEICHNUNG   | DENOMINATION           |
|------|---------------|--------------------|--------------|---------------|------------------------|
| 36   | 223405        | Spessore           | Spacer       | Distanzstueck | Entretoise             |
| 37   | 014205        | Vite               | Screw        | Schraube      | Vis                    |
| 38   | 004058        | Dado               | Nut          | Mutter        | Ecrou                  |
| 39   | 014279        | Vite               | Screw        | Schraube      | Vis                    |
| 40   | 011009        | Grower             | Grower       | Federscheibe  | Grower                 |
|      | <b>971529</b> | Kit raffreddamento | Cooling kit  | Kuehlungskit  | Kit de refroidissement |



DISCHI CONVOGLIATORI • CONVEYOR DISC  
 VORNE FÖDERERSCHRAUBE • DISQUES CONVOYEURS

|                      |               |      |                |
|----------------------|---------------|------|----------------|
| Tav.<br>Tab.<br>Taf. | <b>138110</b> | Rev. | <b>01 0202</b> |
|----------------------|---------------|------|----------------|





DISCHI CONVOGLIATORI • CONVEYOR DISC  
VORNE FÖDERERSCHRAUBE • DISQUES CONVOYEURS

Tav.  
Tab.  
Taf.

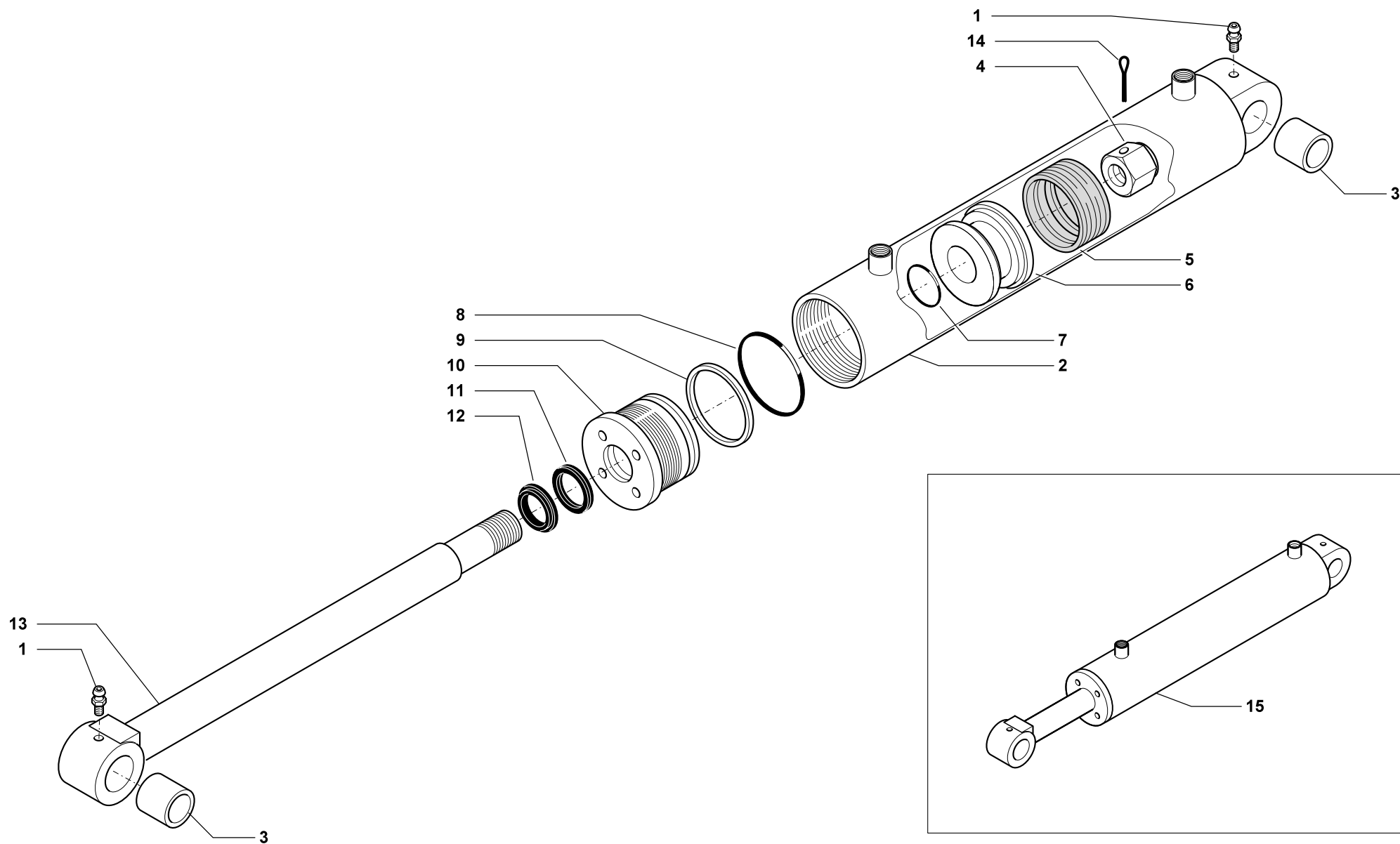
138110

Rev.

01

0202

| RIF. | N. CODICE     | DENOMINAZIONE                  | DENOMINATION        | BEZEICHNUNG           | DENOMINATION               |
|------|---------------|--------------------------------|---------------------|-----------------------|----------------------------|
| 1    | 004063        | Dado                           | Nut                 | Mutter                | Ecrou                      |
| 2    | 010006        | Rondella                       | Washer              | Unterlegscheibe       | Rondelle                   |
| 3    | 923690        | Piastra                        | Plate               | Plate                 | Platte                     |
| 4    | 014241        | Vite                           | Screw               | Schraube              | Vis                        |
| 5    | 923511        | Cavallotto                     | U bolt              | Bügelbolzen           | Crampillon                 |
| 6    | 961693        | Supporto portadisco            | Support             | Halterung             | Support                    |
| 7    | 010009        | Rondella                       | Washer              | Unterlegscheibe       | Rondelle                   |
| 8    | 002014        | Copiglia                       | Split pin           | Hohlstift             | Goupille                   |
| 9    | 004080        | Dado                           | Nut                 | Mutter                | Ecrou                      |
| 10   | 015008        | Coperchio                      | Cover               | Deckel                | Couvercle                  |
| 11   | 961697        | Supporto sinistro              | Support             | Halterung             | Support                    |
| 12   | 003087        | Cuscinetto                     | Bearing             | Kugellager            | Roulement                  |
| 13   | 002013        | Copiglia                       | Split pin           | Hohlstift             | Goupille                   |
| 14   | 961524        | Fusello                        | Drive hub           | Nabe                  | Fusee                      |
| 15   | 099017        | Parapolvere                    | Dust cover          | Staubdeckel           | Cache anti poussière       |
| 16   | 001031        | Anello di arresto              | Stop ring           | Sperring              | Bague d'arret              |
| 17   | 003073        | Cuscinetto                     | Bearing             | Kugellager            | Roulement                  |
| 18   | 008002        | Ingrassatore                   | Grease nipple       | Fettbuechse           | Graisser                   |
| 19   | 011002        | Grower                         | Washer              | Federring             | Rondelle                   |
| 20   | 004002        | Dado                           | Nut                 | Mutter                | Ecrou                      |
| 21   | 014155        | Vite                           | Screw               | Schraube              | Vis                        |
| 22   | 099030        | Disco frangizolle              | Disc                | Scheibe               | Disque                     |
| 23   | 961696        | Supporto destro                | Support             | Halterung             | Support                    |
|      | <b>971511</b> | Dischi convogliatori anteriori | Front conveyor disc | Vorne födererschraube | Disques convoyeurs arriere |



MARTINETTO DI SOLLEVAMENTO • LIFTING JACK  
 HEBEBOCK • VERIN DE REPLIAGE

|                      |               |      |           |             |
|----------------------|---------------|------|-----------|-------------|
| Tav.<br>Tab.<br>Taf. | <b>124202</b> | Rev. | <b>01</b> | <b>0699</b> |
|----------------------|---------------|------|-----------|-------------|



MARTINETTO DI SOLLEVAMENTO • LIFTING JACK  
HEBEBOCK • VERIN DE REPLIAGE

Tav.  
Tab.  
Taf.

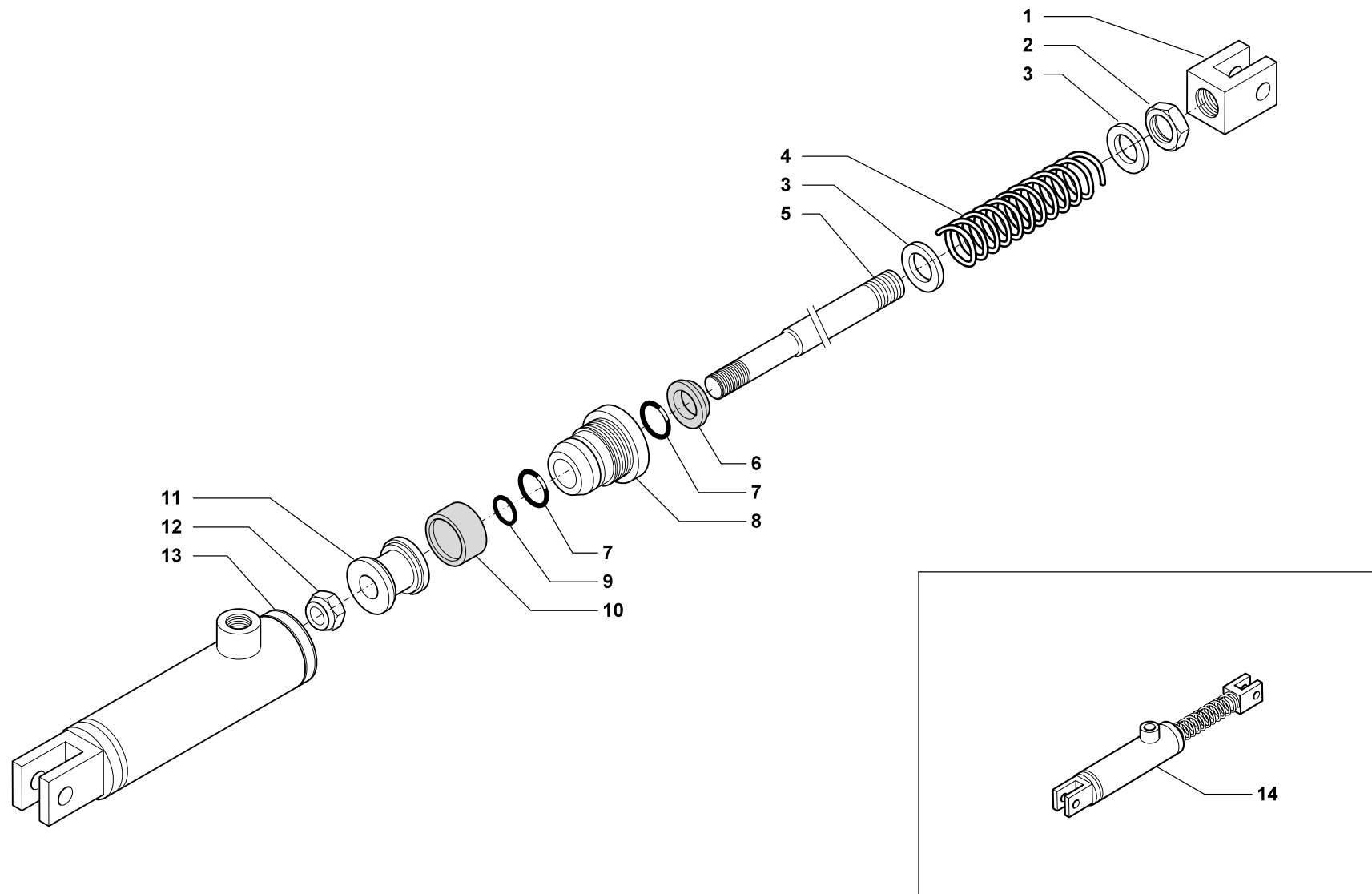
**124202**

Rev.

**01**

**0699**

| RIF. | N. CODICE     | DENOMINAZIONE       | DENOMINATION  | BEZEICHNUNG     | DENOMINATION  |
|------|---------------|---------------------|---------------|-----------------|---------------|
| 1    | 008007        | Ingrassatore        | Grease nipple | Fettbuechse     | Graisneur     |
| 2    | 662541        | Cilindro            | Cylinder      | Zylinder        | Cylindre      |
| 3    | 099066        | Boccola             | Bushing       | Buchse          | Douille       |
| 4    | 004056        | Dado                | Nut           | Mutter          | Ecrou         |
| 5    | 007190        | Guarnizione         | Gasket        | Dichtring       | Joint         |
| 6    | 623805        | Pistone             | Piston        | Kolben          | Piston        |
| 7    | 007181        | Guarnizione         | Gasket        | Dichtring       | Joint         |
| 8    | 007192        | Guarnizione         | Gasket        | Dichtring       | Joint         |
| 9    | 022126        | Anello              | Ring          | Ring            | Bague         |
| 10   | 623802        | Testata             | Cylinder head | Zylinderkopf    | Culasse       |
| 11   | 007193        | Guarnizione         | Gasket        | Dichtring       | Joint         |
| 12   | 007194        | Guarnizione         | Gasket        | Dichtring       | Joint         |
| 13   | 662540        | Stelo               | Rod           | Spindel         | Tige          |
| 14   | 002017        | Copiglia            | Split pin     | Hohlstift       | Goupille      |
| 15   | <b>671776</b> | Martinetto completo | Complete jack | Komplette winde | Vérin complet |



MARTINETTO AZIONAMENTO GANCIO DI BLOCCAGGIO • BLOCKING HOOK COMMANDING JACK  
SPERREHACKEN ANTRIEB WINDE • VERIN CROCHET DE BLOCAGE

Tav. 124206  
Tab. 124206  
Taf. 124206

Rev. 01 0699



MARTINETTO AZIONAMENTO GANCIO DI BLOCCAGGIO • BLOCKING HOOK COMMANDING JACK  
SPERREHACKEN ANTRIEB WINDE • VERIN CROCHET DE BLOCAGE

Tav.  
Tab.  
Taf.

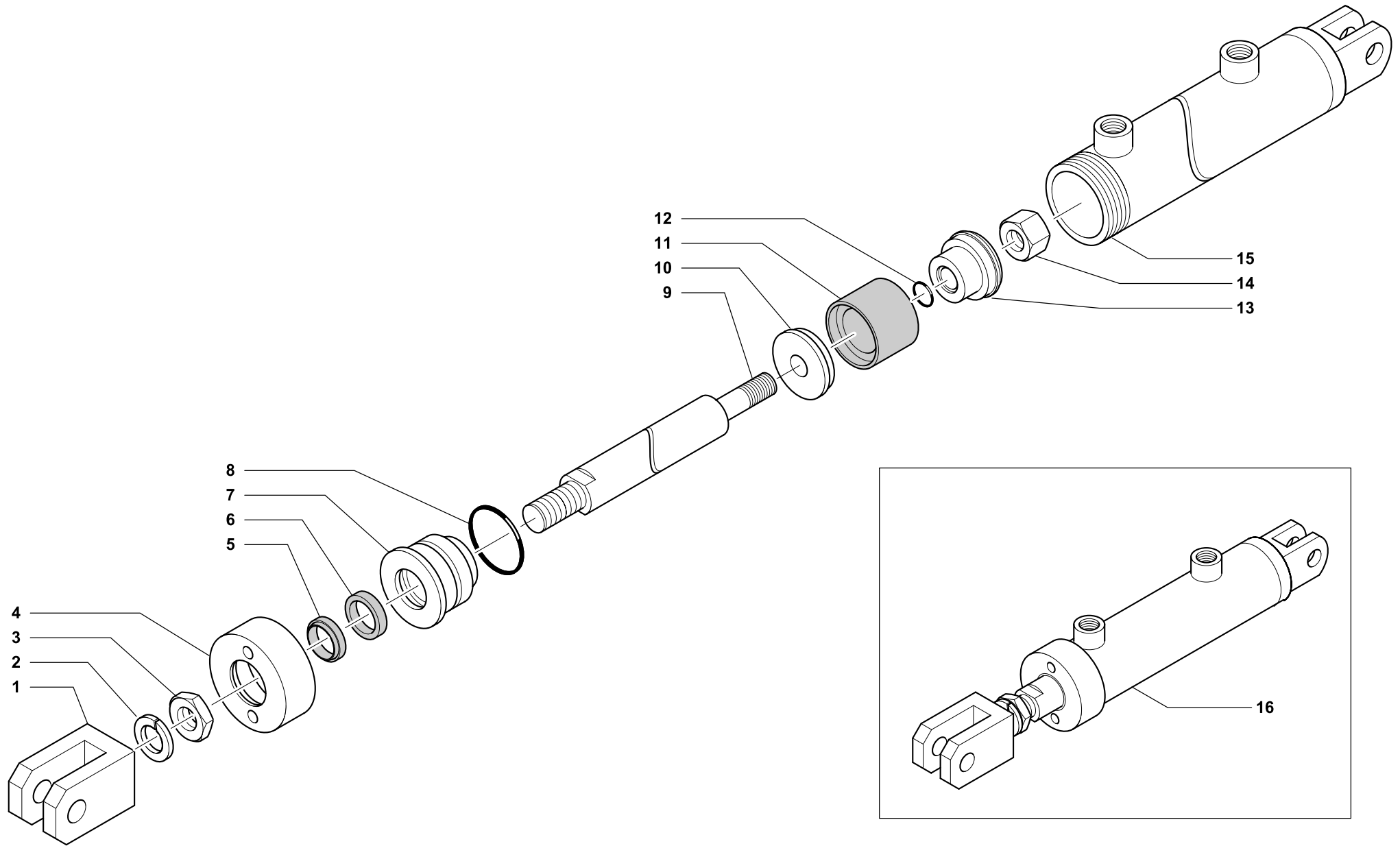
**124206**

Rev.

**01**

**0699**

| RIF. | N. CODICE     | DENOMINAZIONE       | DENOMINATION  | BEZEICHNUNG     | DENOMINATION  |
|------|---------------|---------------------|---------------|-----------------|---------------|
| 1    | 623611        | Forcella filettata  | Fork          | Gabelstueck     | Fourche       |
| 2    | 004040        | Dado                | Nut           | Mutter          | Ecrou         |
| 3    | 010006        | Rondella            | Washer        | Unterlegscheibe | Rondelle      |
| 4    | 423557        | Molla               | Spring        | Feder           | Ressort       |
| 5    | 623810        | Stelo               | Rod           | Spindel         | Tige          |
| 6    | 007198        | Guarnizione         | Gasket        | Dichtring       | Joint         |
| 7    | 007196        | Guarnizione         | Gasket        | Dichtring       | Joint         |
| 8    | 623809        | Guida stelo         | Stem guide    | Schaftsführung  | Guide axe     |
| 9    | 007197        | Guarnizione         | Gasket        | Dichtring       | Joint         |
| 10   | 007191        | Guarnizione         | Gasket        | Dichtring       | Joint         |
| 11   | 623808        | Pistone             | Piston        | Kolben          | Piston        |
| 12   | 004087        | Dado                | Nut           | Mutter          | Ecrou         |
| 13   | 662544        | Tubo                | Hose          | Schlauch        | Tuyau         |
| 14   | <b>671777</b> | Martinetto completo | Complete jack | Komplette winde | Vérin complet |



**MARTINETTO REGOLAZIONE RULLO • ROLLER ADJUSTMEN JACK**  
**KOMPLETTE WINDE REGULIERUNG WALZE • VERIN DE REGLAGE ROULEAUX**

|                      |               |      |           |             |
|----------------------|---------------|------|-----------|-------------|
| Tav.<br>Tab.<br>Taf. | <b>120221</b> | Rev. | <b>00</b> | <b>1000</b> |
|----------------------|---------------|------|-----------|-------------|



MARTINETTO REGOLAZIONE RULLO • ROLLER ADJUSTMEN JACK  
KOMPLETTE WINDE REGULIERUNG WALZE • VERIN DE REGLAGE ROULEAUX

Tav.  
Tab.  
Taf.

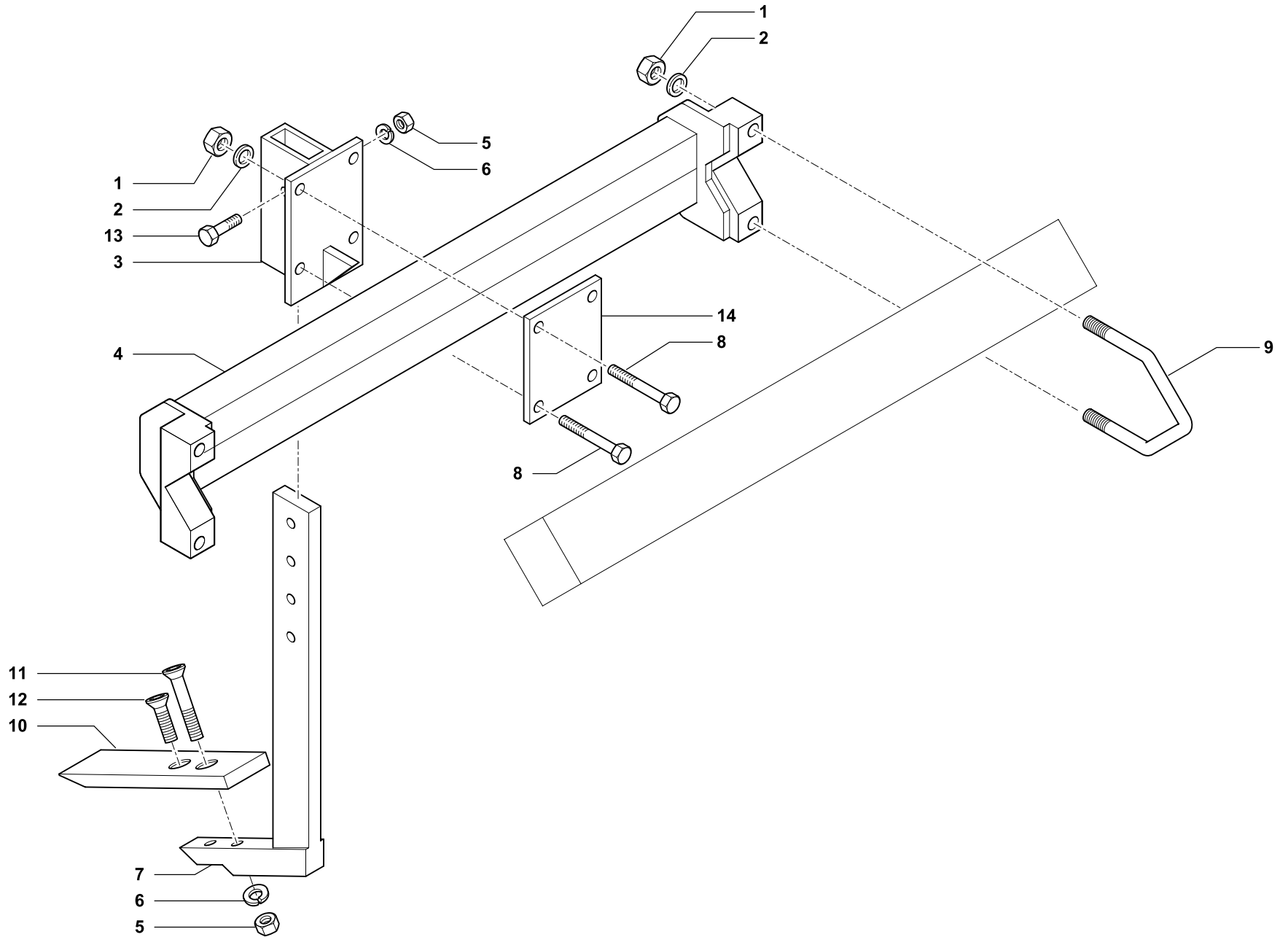
120221

Rev.

00

1000

| RIF. | N. CODICE     | DENOMINAZIONE       | DENOMINATION  | BEZEICHNUNG     | DENOMINATION      |
|------|---------------|---------------------|---------------|-----------------|-------------------|
| 1    | 623818        | Forcella            | Fork          | Gabelstueck     | Fourche           |
| 2    | 011010        | Grower              | Grower        | Federscheibe    | Grower            |
| 3    | 004027        | Dado                | Nut           | Mutter          | Ecrou             |
| 4    | 662543        | Ghiera guida stelo  | Ring nut      | Nutmutter       | Collier           |
| 5    | 007177        | Guarnizione         | Gasket        | Dichtring       | Joint             |
| 6    | 007178        | Guarnizione         | Gasket        | Dichtring       | Joint             |
| 7    | 662545        | Guida stelo         | Guide         | Fuehrung        | Guide             |
| 8    | 007168        | Guarnizione OR      | Gasket OR     | Dichtring OR    | Joint OR          |
| 9    | 423239        | Stelo               | Rod           | Spindel         | Tige              |
| 10   | 423197        | Semicorpo pistone   | Half piston   | Halber Kolben   | Demi corps piston |
| 11   | 007165        | Guarnizione         | Gasket        | Dichtring       | Joint             |
| 12   | 007058        | Guarnizione OR      | Gasket OR     | Dichtring OR    | Joint OR          |
| 13   | 423196        | Pistone             | Piston        | Kolben          | Piston            |
| 14   | 004072        | Dado                | Nut           | Mutter          | Ecrou             |
| 15   | 461464        | Cilindro            | Cylinder      | Zylinder        | Cilindre          |
| 16   | <b>471444</b> | Martinetto completo | Complete jack | Komplette winde | Vérin complet     |



**ROMPITRACCIA • LOOSENING TINE**  
**SPURLOCKERER • BRISE TRACES**

|      |               |      |                |
|------|---------------|------|----------------|
| Tav. | <b>120650</b> | Rev. | <b>02 1002</b> |
| Tab. |               |      |                |
| Taf. |               |      |                |





ROMPITRACCIA • LOOSENING TINE  
SPURLOCKERER • BRISE TRACES

Tav.  
Tab.  
Taf.

**120650**

Rev.

**02**

**1002**

| RIF. | N. CODICE     | DENOMINAZIONE           | DENOMINATION       | BEZEICHNUNG       | DENOMINATION     |
|------|---------------|-------------------------|--------------------|-------------------|------------------|
| 1    | 004009        | Dado                    | Nut                | Mutter            | Ecrou            |
| 2    | 010006        | Rondella                | Washer             | Unterlegscheibe   | Rondelle         |
| 3    | 461358        | Supporto                | Support            | Halterung         | Support          |
| 4    | 461095        | Attacco                 | Hitch              | Anhängung         | Fixation         |
| 5    | 004003        | Dado                    | Nut                | Mutter            | Ecrou            |
| 6    | 011003        | Grower                  | Grower             | Federscheibe      | Grower           |
| 7    | 961549        | Ancora per rompitraccia | Ripper leg         | Ripper            | Ripper           |
| 8    | 014181        | Vite                    | Screw              | Schraube          | Vis              |
| 9    | 923511        | Cavallotto              | U bolt             | Bügelbolzen       | Crampillon       |
| 10   | 823560        | Scalpello               | Blade              | Messer            | Burin plat       |
| 11   | 014268        | Vite                    | Screw              | Schraube          | Vis              |
| 12   | 014273        | Vite                    | Screw              | Schraube          | Vis              |
| 13   | 014078        | Vite                    | Screw              | Schraube          | Vis              |
| 14   | 411713        | Contropiastra           | Plate              | Teller            | Plateau          |
|      | <b>971761</b> | Kit rompitraccia        | Loosening tine kit | Satz Spurlockerer | Kit brise traces |