

FARMGARD
ROBUST MACHINERY THAT WORKS

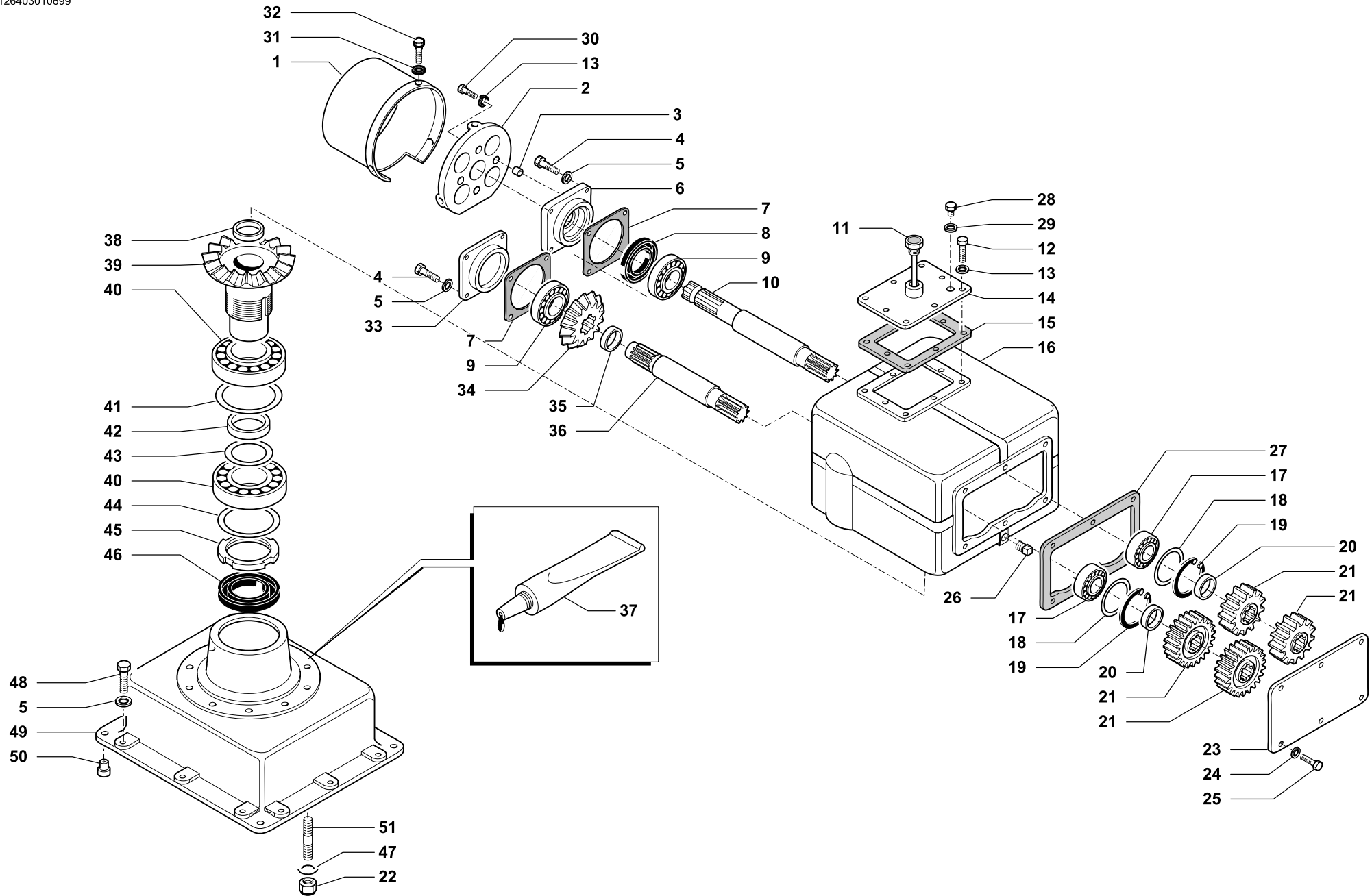


MAXI P

CELLI SPARE PARTS REFERENCE GUIDE

FOLDING POWER HARROW





SCATOLA CAMBIO LATERALE • LATERAL GEARBOX
 GETRIEBEGEHAUSE SEITLICHEL • BOITE TRANSMISSION LATERALE



Tav. Tab. Taf.	126403	Rev.	01 0699
----------------------	---------------	------	----------------



SCATOLA CAMBIO LATERALE • LATERAL GEARBOX
GETRIEBEGEHAUSE SEITLICHEL • BOITE TRANSMISSION LATERALE

Tav.
Tab.
Taf.

126403

Rev.

01

0699

RIF.	N. CODICE	DENOMINAZIONE	DENOMINATION	BEZEICHNUNG	DENOMINATION	
1	124505	Cuffia	Guard	Schütz	Protection	
2	161500	Supporto	Support	Halterung	Support	
3	323644	Distanziale	Spacer	Distanzstueck	Entretoise	
4	014145	Vite	Screw	Schraube	Vis	
5	011003	Grower	Grower	Federscheibe	Grower	
6	421606	Coperchio	Cover	Deckel	Couvercle	
7	424600	Guarnizione	Gasket	Dichtring	Joint	
8	007152	Paraolio	Oil seal	Simmerring	Joint huile	
9	003044S	Cuscinetto	Bearing	Kugellager	Roulement	
10	423710	Albero presa di forza	Shaft	Welle	Arbre	
11	022164	Tappo 3/4	Plug	Verschluss	Bouchon	
12	014227	Vite	Screw	Schraube	Vis	
13	011002	Grower	Grower	Federscheibe	Grower	
14	461073	Coperchio	Cover	Deckel	Couvercle	
15	424601	Guarnizione	Gasket	Dichtring	Joint	
250/350	16	621600	Scatola rotazione destra	Housing	Gehäuse	Bôte
300/400		621604	Scatola rotazione sinistra	Housing	Gehäuse	Bôte
17	003112S	Cuscinetto	Bearing	Kugellager	Roulement	
18	111504	Serie spessori	Set spacers	Beilagscheiben	Serie d'épaisseurs	
19	001033	Anello di arresto	Stop ring	Sperring	Bague d'arret	
20	423715	Distanziale	Spacer	Distanzstueck	Entretoise	
21	422606	Ingranaggio Z 14	Gear	Zahnrad	Engrenage	
	422607	Ingranaggio Z 15	Gear	Zahnrad	Engrenage	
	422612	Ingranaggio Z 24	Gear	Zahnrad	Engrenage	
	422613	Ingranaggio Z 25	Gear	Zahnrad	Engrenage	
22	004079	Dado	Nut	Mutter	Ecrou	
23	421603	Coperchio cambio	Cover	Deckel	Couvercle	
24	011012	Grower	Grower	Federscheibe	Grower	
25	014205	Vite	Screw	Schraube	Vis	
26	022009	Tappo 1/2 gas	Plug	Verschluss	Bouchon	
27	424602	Guarnizione	Gasket	Dichtring	Joint	
28	022153	Tappo	Plug	Verschluss	Bouchon	
29	022086	Rondella	Washer	Scheibe	Rondelle	



SCATOLA CAMBIO LATERALE • LATERAL GEARBOX
GETRIEBEGEHAUSE SEITLICHEL • BOITE TRANSMISSION LATERALE

Tav.
Tab.
Taf.

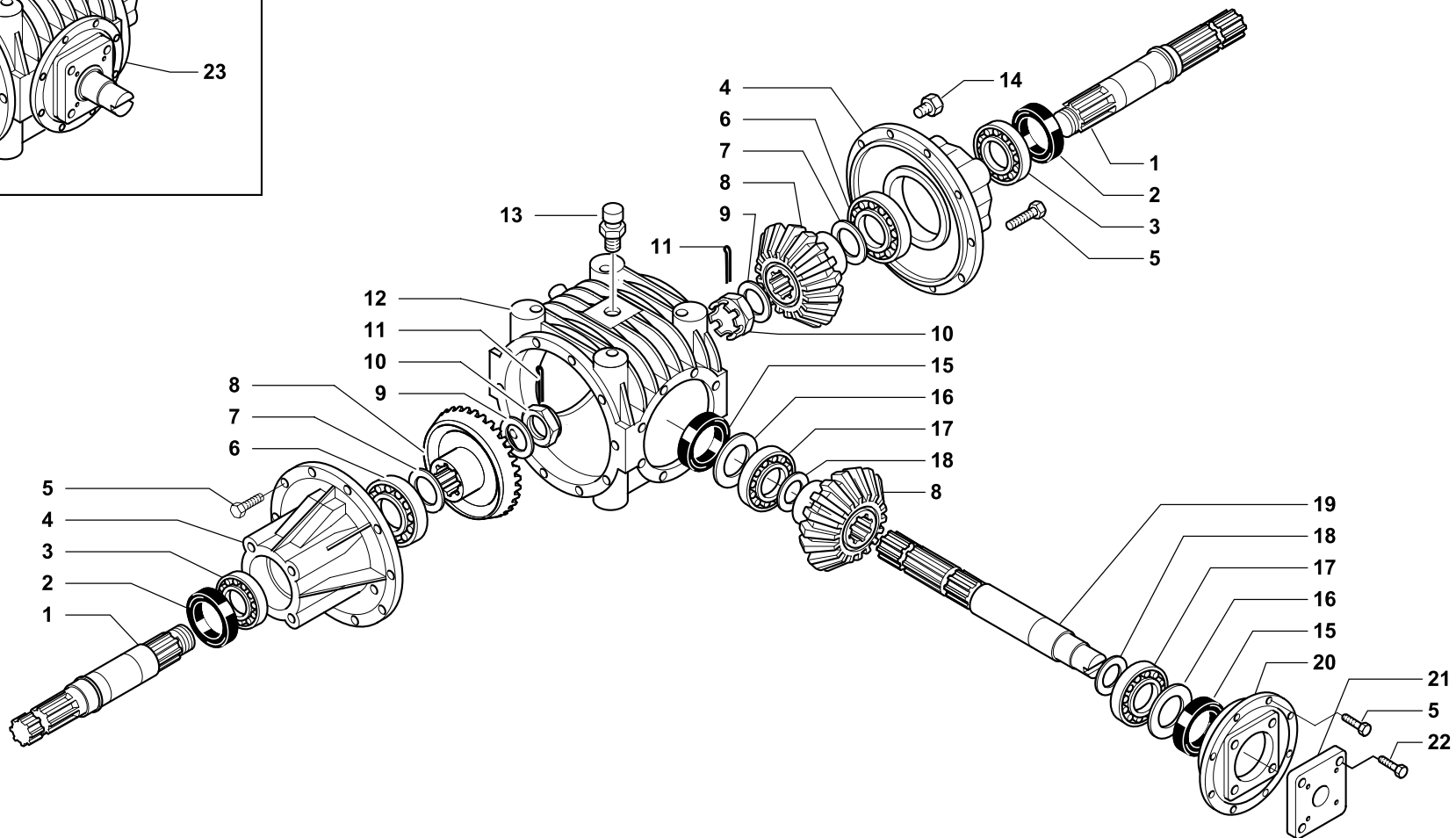
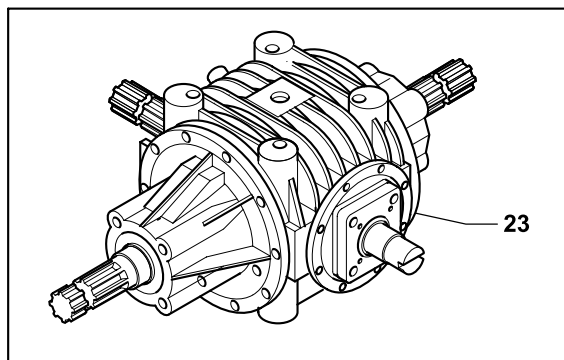
126403

Rev.

01

0699

RIF.	N. CODICE	DENOMINAZIONE	DENOMINATION	BEZEICHNUNG	DENOMINATION
30	014278	Vite	Screw	Schraube	Vis
31	010023	Rondella	Washer	Scheibe	Rondelle
32	014284	Vite	Screw	Schraube	Vis
33	421602	Coperchio	Cover	Deckel	Couvercle
34	422615	Pignone conico Z 15	Pinion shaft	Arbre pignon	Ritzelwelle
35	423537	Distanziale	Spacer	Distanzstueck	Entretoise
36	423711	Albero	Shaft	Welle	Arbre
37	094002	Sigillante	Glue	Klebstoff	Colle
38	611600	Tappo	Plug	Verschluss	Bouchon
39	622600	Corona conica Z=26	Crownwheel	Zahnkranz	Couronne
40	003132S	Cuscinetto	Bearing	Kugellager	Roulement
41	623633	Anello	Ring	Ring	Bague
42	623601	Anello	Ring	Ring	Bague
43	611601	Serie spessori	Set spacers	Beilagscheiben	Serie d'epaisseurs
44	611605	Spessore	Shim	Scheibe	Epaisseur
45	005015	Ghiera	Ring nut	Nutmutter	Collier
46	007040	Paraolio	Oil seal	Simmerring	Joint huile
47	011013	Rosetta ondulata	Washer	Scheibe	Rondelle
48	014213	Vite	Screw	Schraube	Vis
49	621601	Lanterna porta scatola	Main rotor housing	Hauptwelle halter	Carter boîte de vitesse
50	623604	Spina di centraggio	Pin	Stift	Goupille
51	014297	Vite	Screw	Schraube	Vis



SCATOLA TRASMISSIONE CENTRALE • CENTRAL GEARBOX
 ZENTRALES GETRIEBEGEHAUSE • BOITE TRANSMISSION CENTRALE

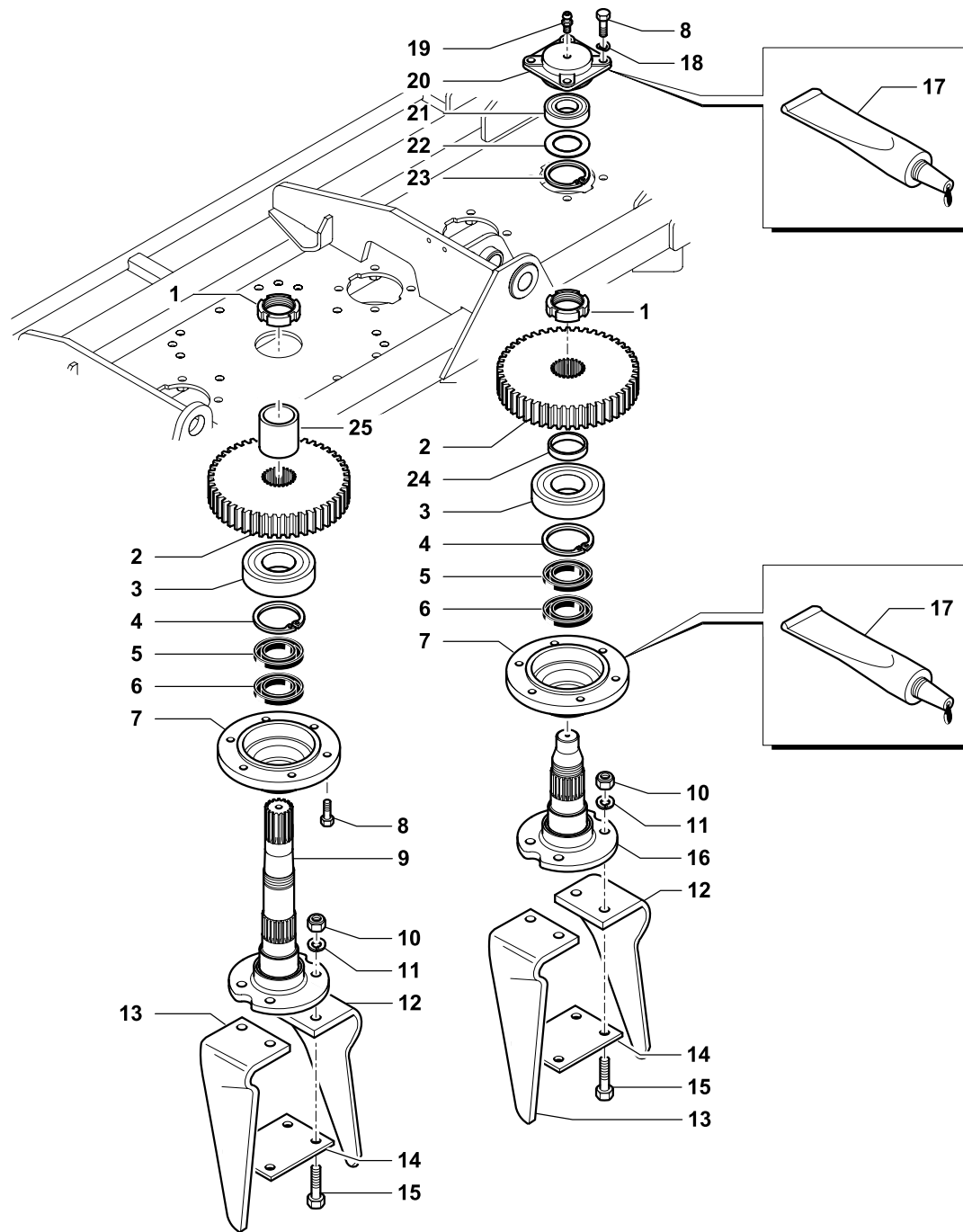
Tav.	349224	Rev.	00 0304
Tab.			
Taf.			



SCATOLA TRASMISSIONE CENTRALE • CENTRAL GEARBOX
ZENTRALES GETRIEBEGEHAUSE • BOITE TRANSMISSION CENTRALE

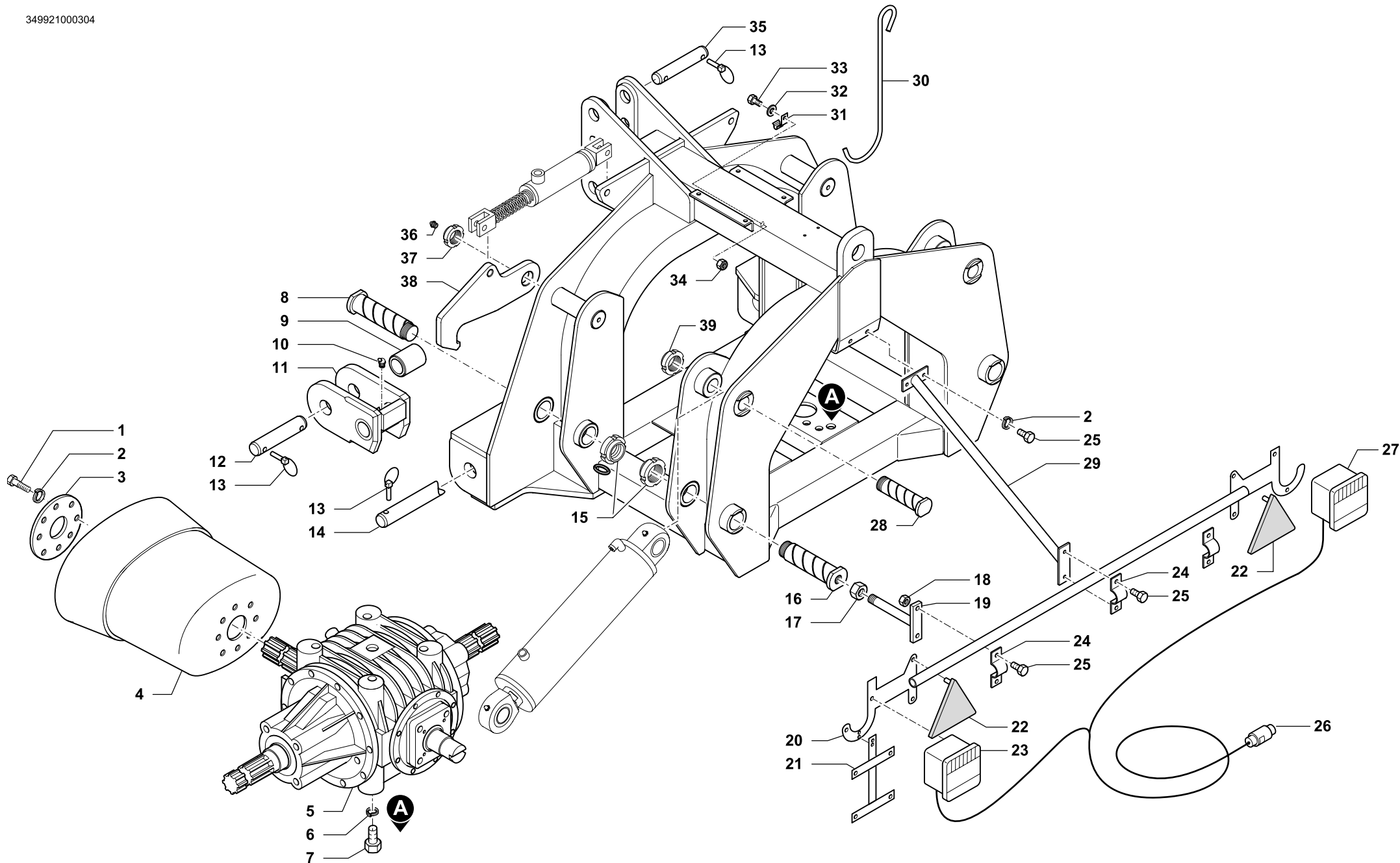
Tav. 349224 Rev. 00 0304
Tab.
Taf.

RIF.	N. CODICE	DENOMINAZIONE	DENOMINATION	BEZEICHNUNG	DENOMINATION
1	623353	Albero	Shaft	Welle	Arbre
2	007024	Paraolio	Oil seal	Simmerring	Joint huile
3	003145	Cuscinetto	Bearing	Kugellager	Roulement
4	621730	Prolunga	Extension	Verlängerungsstück	Rallonge
5	014007	Vite	Screw	Schraube	Vis
6	003027	Cuscinetto	Bearing	Kugellager	Roulement
7	001143	Serie spessori	Shims series	Serie-Ausgleichscheiben	Série épaisseurs
8	622725	Corona	Crownwheel	Zahnkranz	Couronne
9	001144	Serie spessori	Shims series	Serie-Ausgleichscheiben	Série épaisseurs
10	004102	Dado	Nut	Mutter	Ecrou
11	002016	Copiglia	Split pin	Splint	Goupille
12	621732	Scatola	Housing	Gehäuse	Boite
13	022141	Tappo di sfiato	Breather plug	Entlüftungsstopfen	Bouchon d'évent
14	022048	Tappo	Plug	Pfropfen	Bouchon
15	007207	Paraolio	Oil seal	Simmerring	Joint huile
16	001146	Serie spessori	Shims series	Serie-Ausgleichscheiben	Série épaisseurs
17	003044	Cuscinetto	Bearing	Kugellager	Roulement
18	001145	Serie spessori	Shims series	Serie-Ausgleichscheiben	Série épaisseurs
19	623354	Albero	Shaft	Welle	Arbre
20	621731	Coperchio	Cover	Deckel	Couvercle
21	621719	Flangia	Flange	Flansch	Flasque
22	014095	Vite	Screw	Schraube	Vis
23	671791	Scatola trasmissione	Transmission case	Getriebegehäuse	Boite transmission





RIF.	N. CODICE	DENOMINAZIONE	DENOMINATION	BEZEICHNUNG	DENOMINATION
1	005025	Ghiera	Ring nut	Nutmutter	Collier
2	622612	Ingranaggio centrale	Gear	Zahnrad	Engrenage
3	003179S	Cuscinetto	Bearing	Kugellager	Roulement
4	001034	Anello di arresto	Stop ring	Sperring	Bague d'arret
5	007236	Paraolio	Oil seal	Simmerring	Joint huile
6	007235	Paraolio	Oil seal	Simmerring	Joint huile
7	621653	Supporto inferiore	Halterung	Deckel	Support
8	014213	Vite	Screw	Schraube	Vis
9	622610	Albero rotore centrale	Central blade support	Zentralmesserhalterung	Support couteau central
10	004112	Dado	Nut	Mutter	Ecrou
11	011005	Grower	Grower	Federscheibe	Grower
12	622614	Coltello destro	Right blade	Messer rechts	Couteau droite
13	622613	Coltello sinistro	Left blade	Rechtes	Couteau
14	611604	Contropiastra	Plate	Plattchen	Plaque
15	014416	Vite	Screw	Schraube	Vis
16	622611	Albero rotore laterale	Lateral blade support	Lateralmesserhalterung	Support couteau lateral
17	094006	Sigillante	Glue	Klebstoff	Colle
18	011013	Rondella ondulata	Spring washer	Scheibe	Rondelle
19	008009	Ingrassatore	Grease nipple	Fettbuechse	Graisser
20	621603	Supporto superiore	Cover	Deckel	Couvercle
21	003138S	Cuscinetto	Bearing	Kugellager	Roulement
22	623634	Anello	Ring	Ring	Bague
23	001007	Anello di arresto	Stop ring	Sperring	Bague d'arret
24	611522	Distanziale	Spacer	Distanzstueck	Entretoise
25	611523	Distanziale	Spacer	Distanzstueck	Entretoise



TELAIO CENTRALE • CENTER FRAME
MITTELRAHMEN • CHASSIS CENTRAL

Tav. Tab. Taf.	349921	Rev.	00 0304
----------------------	---------------	------	----------------



TELAIO CENTRALE • CENTER FRAME
MITTELRAHMEN • CHASSIS CENTRAL

Tav.
Tab.
Taf.

349921

Rev.

00

0304

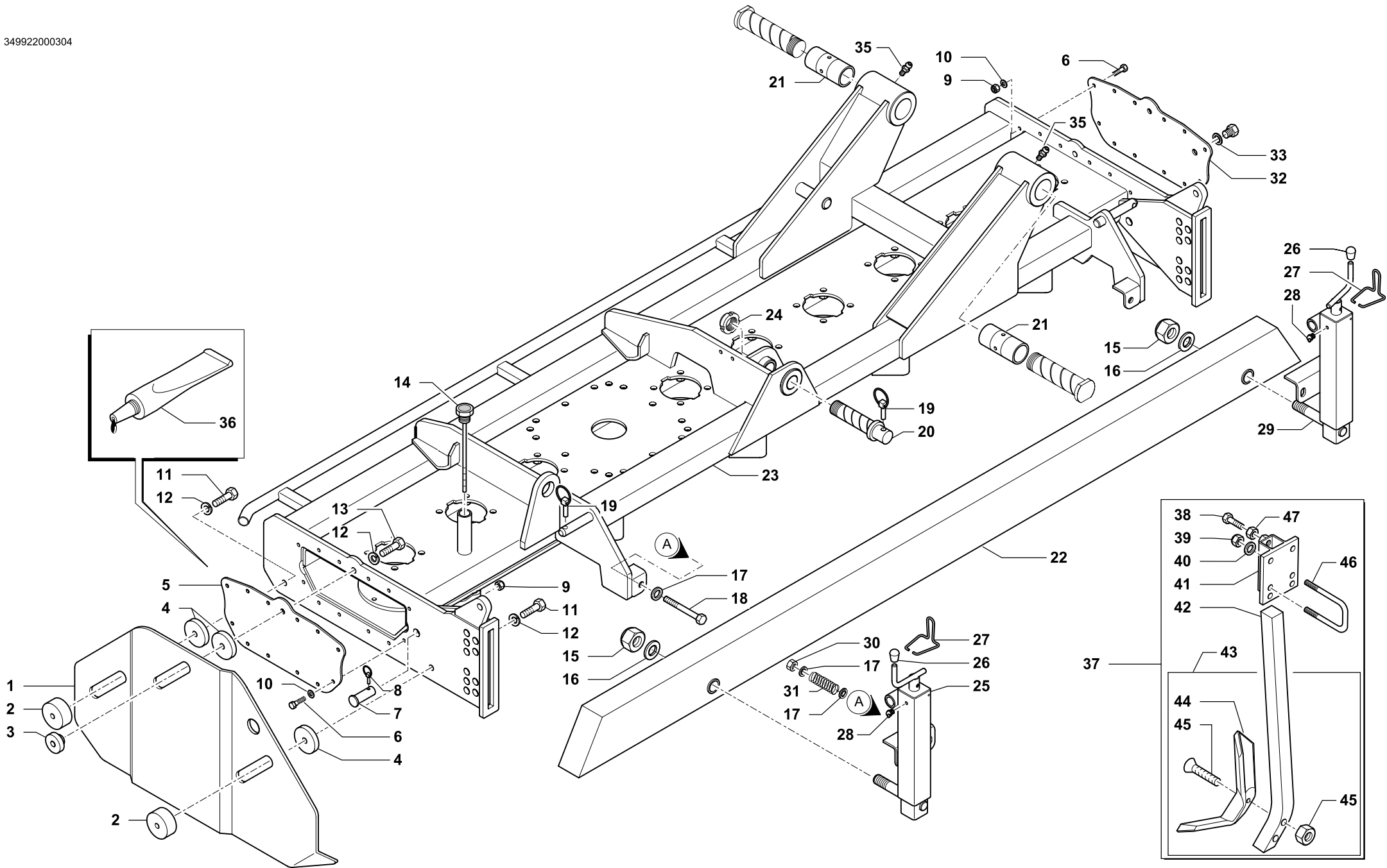
RIF.	N. CODICE	DENOMINAZIONE	DENOMINATION	BEZEICHNUNG	DENOMINATION
1	014144	Vite	Screw	Schraube	Vis
2	011002	Grower	Grower	Federscheibe	Grower
3	612727	Flangia	Flange	Flansch	Flasque
4	099140	Cuffia	Guard	Schutz	Protection
5	671791	Scatola	Housing	Gehäuse	Bôte
6	011008	Grower	Grower	Federscheibe	Grower
7	014326	Vite	Screw	Schraube	Vis
8	613101	Perno	Pivot	Bolzen	Axe
9	613107	Boccola	Bushing	Buchse	Douille
10	008005	Ingrassatore	Grease nipple	Fettbuechse	Graisneur
11	661101	Attacco oscillante sinistro (3° cat.)	Swinging arm (cat.III)	Pendelnder Anschluss (Kat.III)	Attelage oscillant (3°cat.)
	661111	Attacco oscillante sinistro (3° cat.)	Swinging arm (cat.III)	Pendelnder Anschluss (Kat.III)	Attelage oscillant (3°cat.)
12	723606	Perno	Pivot	Bolzen	Axe
13	013011	Spina a scatto	Pin	Stift	Goupille
14	621735	Perno	Pivot	Bolzen	Axe
15	005008	Ghiera	Ring nut	Nutmutter	Collier
16	613101	Perno	Pivot	Bolzen	Axe
17	004069	Dado	Nut	Mutter	Ecrou
18	004084	Dado	Nut	Mutter	Ecrou
19	662539	Attacco barra portafanali	Bar connection	Stangenanschluss	Attelage barre
20	027006	Barra portafanali	Bar	Stange	Barre
21	027007	Portatarga	Number plate holder	Schildrahmen	Porte plaque
22	027002	Catadiottro	Reflector	Rückstrahler	Catadioptré
23	027003	Fanale sinistro	Left Light	Links Scheinwerfer	Gauche Feu
24	612941	Piastra ferma tubo	Plate	Teller	Plateau
25	014149	Vite	Screw	Schraube	Vis
26	027005	Cavo alimentazione	Power supply wire	Zufuhrkabel	Cable alimentation
27	027004	Fanale destro	Right light	Rechts Scheinwerfer	Droit Feu
28	613103	Perno	Pivot	Bolzen	Axe
29	662516	Barra di attacco centrale	Bar	Stange	Barre
30	523652	Gancio cardano 402 mm	Drive shaft hook	Gelenkwelle aufhaengung	Crochet
31	611728	Staffa gancio	Flask	Pratze	Bride
32	010002	Rondella	Washer	Unterlegscheibe	Rondelle
33	014213	Vite	Screw	Schraube	Vis



TELAIO CENTRALE • CENTER FRAME
MITTELRAHMEN • CHASSIS CENTRAL

Tav. Tab. Taf.	349921	Rev.	00	0304
----------------------	---------------	------	-----------	-------------

RIF.	N. CODICE	DENOMINAZIONE	DENOMINATION	BEZEICHNUNG	DENOMINATION
34	004055	Dado	Nut	Mutter	Ecrou
35	723630	Perno	Pivot	Bolzen	Axe
36	008001	Ingrassatore	Grease nipple	Fettbuechse	Graisser
37	005006	Ghiera	Ring nut	Nutmutter	Collier
38	611414	Gancio di bloccaggio	Hook	Haken	Crochet
39	005008	Ghiera	Ring nut	Nutmutter	Collier



TELAIO SINISTRO • LEFT FRAME
L.H. RAHMEN • CHASSIS GAUCHE

Tav. Tab. Taf.	349922	Rev.	00 0304
----------------------	---------------	------	----------------



TELAIO SINISTRO • LEFT FRAME
L.H. RAHMEN • CHASSIS GAUCHE

Tav. 349922 Rev. 00 0304
Tab. Taf.

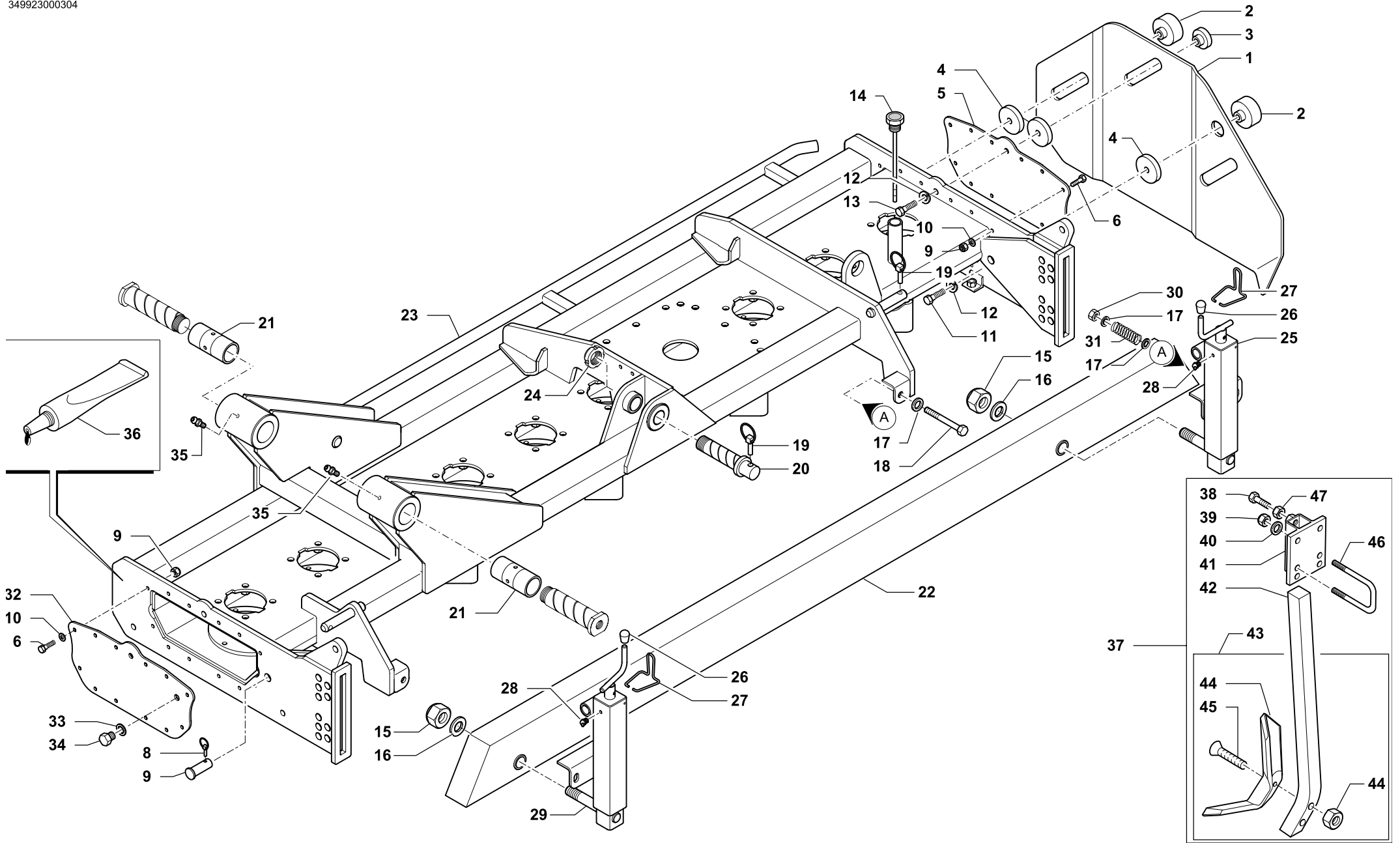
RIF.	N. CODICE	DENOMINAZIONE	DENOMINATION	BEZEICHNUNG	DENOMINATION
1	612385	Laterale sinistro	L.H. side shield	L.H. seitlicher schild	Lateral gauche
2	623411	Blocchetto di fissaggio parazole	Stop plate	Schweisplatten	Bloc de fixation
3	623412	Blocchetto di fissaggio parazole	Stop plate	Schweisplatten	Bloc de fixation
4	623418	Rondella	Washer	Scheibe	Rondelle
5	612598	Coperchio cofano	Cover	Deckel	Couvercle
6	014245	Vite	Screw	Schraube	Vis
7	623563	Perno fulcro braccio rullo	Pivot	Bolzen	Axe
8	013023	Spina a scatto	Pin	Stift	Goupille
9	004055	Dado	Nut	Mutter	Ecrou
10	010023	Rondella	Washer	Scheibe	Rondelle
11	014224	Vite	Screw	Schraube	Vis
12	011033	Grower	Washer	Federring	Rondelle
13	014251	Vite	Screw	Schraube	Vis
14	022164	Tappo con asta	Plug	Verschluss	Bouchon
15	004006	Dado	Nut	Mutter	Ecrou
16	010026	Rondella	Washer	Scheibe	Rondelle
17	010004	Rondella	Washer	Scheibe	Rondelle
18	014356	Vite	Screw	Schraube	Vis
19	013011	Spina a scatto	Pin	Stift	Goupille
20	423868	Perno fulcro martinetto	Pivot	Bolzen	Axe
21	423248	Bronzina	Bushing	Buchse	Douille
500	22	662825	Barra livellatrice	Levelling bar	Barre niveleuse
600		662826	Barra livellatrice	Levelling bar	Barre niveleuse
700		662827	Barra livellatrice	Levelling bar	Barre niveleuse
500	23	662834	Telaio sinistro	Left frame	Chassis gauche
600		662836	Telaio sinistro	Left frame	Chassis gauche
700		662838	Telaio sinistro	Left frame	Chassis gauche
24	005007	Ghiera	Ring nut	Nutmutter	Collier
25	662682	Vite di regolazione sinistra	Threaded bar	Spindel	Vis de réglage
26	022157	Tappo goccia	Plug	Verschluss	Bouchon
27	612891	Molla di bloccaggio	Spring	Feder	Ressort de blocage
28	008005	Ingrassatore	Grease nipple	Fettbuechse	Graisneur
29	662683	Vite di regolazione destra	Threaded bar	Spindel	Vis de réglage



TELAIO SINISTRO • LEFT FRAME
L.H. RAHMEN • CHASSIS GAUCHE

Tav. Tab. Taf.	349922	Rev.	00	0304
----------------------	---------------	------	-----------	-------------

RIF.	N. CODICE	DENOMINAZIONE	DENOMINATION	BEZEICHNUNG	DENOMINATION
30	004059	Dado	Nut	Mutter	Ecrou
31	623624	Molla	Spring	Feder	Ressort
32	612599	Coperchio laterale interno	Cover	Deckel	Couvercle
33	022086	Rondella	Washer	Scheibe	Rondelle
34	022180	Tappo	Plug	Verschluss	Bouchon
35	008007	Ingrassatore	Grease nipple	Fettbuechse	Graisser
36	094006	Sigillante	Glue	Klebstoff	Colle
37	971508	Rompitraccia completo	Loosening tine	Spurspurlockerer	Brise traces
38	014246	Vite	Screw	Schraube	Vis
39	004054	Dado	Nut	Mutter	Ecrou
40	010002	Rondella	Washer	Scheibe	Rondelle
41	661917	Supporto	Support	Halterung	Support
42	099122	Ancora per rompitraccia	Ripper leg	Untergrundlockerer-arm	Bras du ripper
43	099120	Rompitraccia	Loosening tine	Spurspurlockerer	Brise traces
44	099121	Vomere reversibile	Blade	Messer	Burin
45	014354	Vite + Dado	Screw + Nut	Schraube + Mutter	Vis + Ecrou
46	623749	Cavallotto	U bolt	Bügelbolzen	Crampillon
47	004004	Dado	Nut	Mutter	Ecrou



TELAIO DESTRO • RIGHT FRAME
R.H. RAHMEN • CHASSIS DROITE

Tav. Tab. Taf.	349923	Rev.	00 0304
----------------------	---------------	------	----------------



TELAIO DESTRO • RIGHT FRAME
R.H. RAHMEN • CHASSIS DROITE

Tav. 349923 Rev. 00 0304
Tab. Taf.

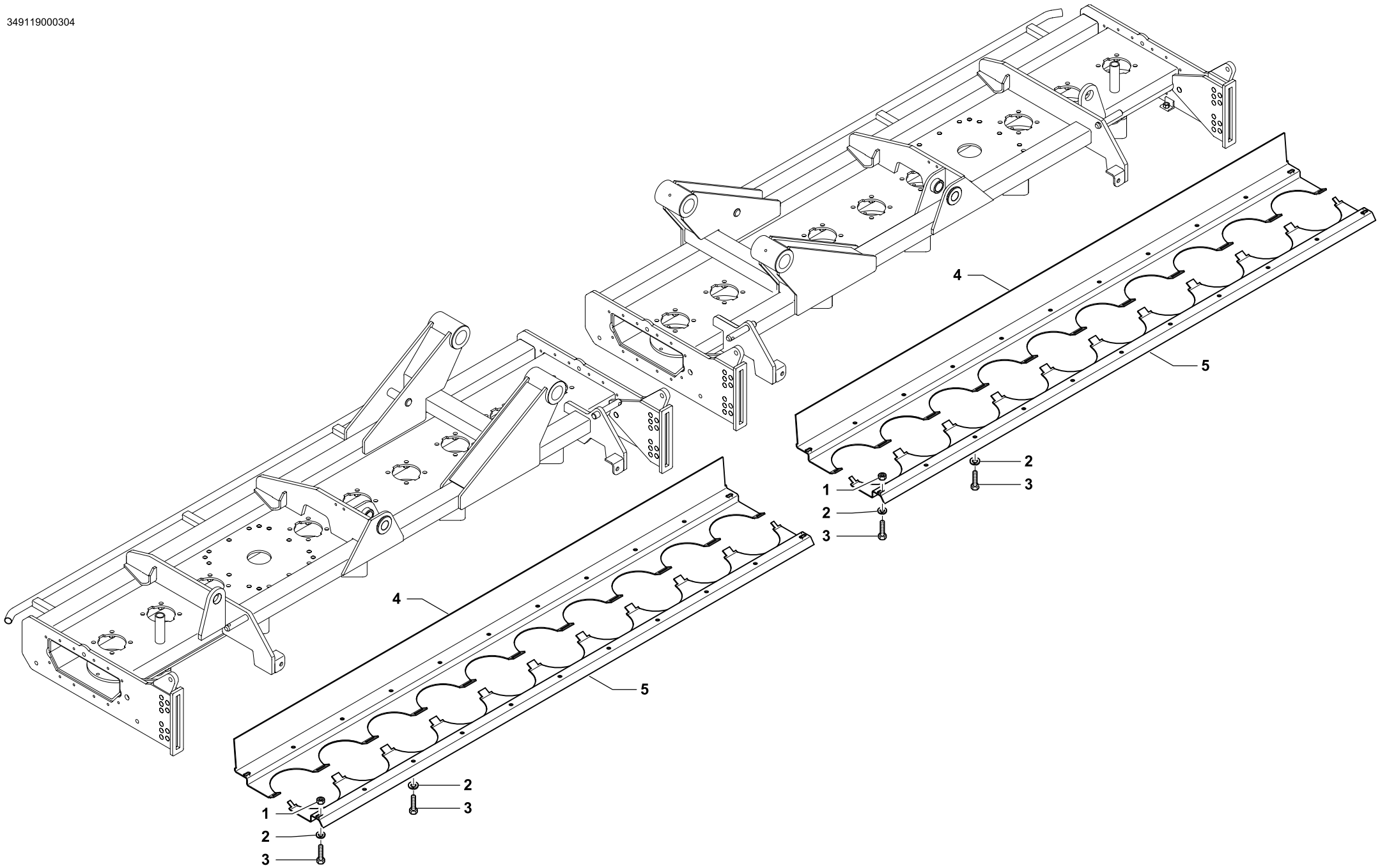
RIF.	N. CODICE	DENOMINAZIONE	DENOMINATION	BEZEICHNUNG	DENOMINATION
1	612386	Laterale destro	R.H. side shield	R.H. seitlicher schild	Lateral droite
2	623411	Blocchetto di fissaggio parazole	Stop plate	Schweislappen	Bloc de fixation
3	623412	Blocchetto di fissaggio parazole	Stop plate	Schweislappen	Bloc de fixation
4	623418	Rondella	Washer	Scheibe	Rondelle
5	612598	Coperchio cofano	Cover	Deckel	Couvercle
6	014245	Vite	Screw	Schraube	Vis
7	623563	Perno fulcro braccio rullo	Pivot	Bolzen	Axe
8	013023	Spina a scatto	Pin	Stift	Goupille
9	004055	Dado	Nut	Mutter	Ecrou
10	010023	Rondella	Washer	Scheibe	Rondelle
11	014224	Vite	Screw	Schraube	Vis
12	011033	Grower	Washer	Federring	Rondelle
13	014251	Vite	Screw	Schraube	Vis
14	022164	Tappo con asta	Plug	Verschluss	Bouchon
15	004006	Dado	Nut	Mutter	Ecrou
16	010026	Rondella	Washer	Scheibe	Rondelle
17	010004	Rondella	Washer	Scheibe	Rondelle
18	014356	Vite	Screw	Schraube	Vis
19	013011	Spina a scatto	Pin	Stift	Goupille
20	423868	Perno fulcro martinetto	Pivot	Bolzen	Axe
21	423248	Bronzina	Bushing	Buchse	Douille
500	22	662825	Barra livellatrice	Levelling bar	Barre niveleuse
600		662826	Barra livellatrice	Levelling bar	Barre niveleuse
700		662827	Barra livellatrice	Levelling bar	Barre niveleuse
500	23	662835	Telaio destro	Right frame	Chassis droite
600		662837	Telaio destro	Right frame	Chassis droite
700		662839	Telaio destro	Right frame	Chassis droite
24	005007	Ghiera	Ring nut	Nutmutter	Collier
25	662682	Vite di regolazione sinistra	Threaded bar	Spindel	Vis de réglage
26	022157	Tappo goccia	Plug	Verschluss	Bouchon
27	612891	Molla di bloccaggio	Spring	Feder	Ressort de blocage
28	008005	Ingrassatore	Grease nipple	Fettbuechse	Graisneur
29	662683	Vite di regolazione destra	Threaded bar	Spindel	Vis de réglage



TELAIO DESTRO • RIGHT FRAME
R.H. RAHMEN • CHASSIS DROITE

Tav. 349923 Rev. 00 0304
Tab. Taf.

RIF.	N. CODICE	DENOMINAZIONE	DENOMINATION	BEZEICHNUNG	DENOMINATION
30	004059	Dado	Nut	Mutter	Ecrou
31	623624	Molla	Spring	Feder	Ressort
32	612599	Coperchio laterale interno	Cover	Deckel	Couvercle
33	022086	Rondella	Washer	Scheibe	Rondelle
34	022180	Tappo	Plug	Verschluss	Bouchon
35	008007	Ingrassatore	Grease nipple	Fettbuechse	Graisser
36	094006	Sigillante	Glue	Klebstoff	Colle
37	971508	Rompitraccia completo	Loosening tine	Spurspurlockerer	Brise traces
38	014246	Vite	Screw	Schraube	Vis
39	004054	Dado	Nut	Mutter	Ecrou
40	010002	Rondella	Washer	Scheibe	Rondelle
41	661917	Supporto	Support	Halterung	Support
42	099122	Ancora per rompitraccia	Ripper leg	Untergrundlockerer-arm	Bras du ripper
43	099120	Rompitraccia	Loosening tine	Spurspurlockerer	Brise traces
44	099121	Vomere reversibile	Blade	Messer	Burin
45	014354	Vite + Dado	Screw + Nut	Schraube + Mutter	Vis + Ecrou
46	623749	Cavallotto	U bolt	Bügelbolzen	Crampillon
47	004004	Dado	Nut	Mutter	Ecrou



KIT PARASASSI • LOWER HOUSING PROTECTION
HALTERUNG SCHUTZ • KIT PROTEGE PIERRES

Tav.
Tab.
Taf. **349119**

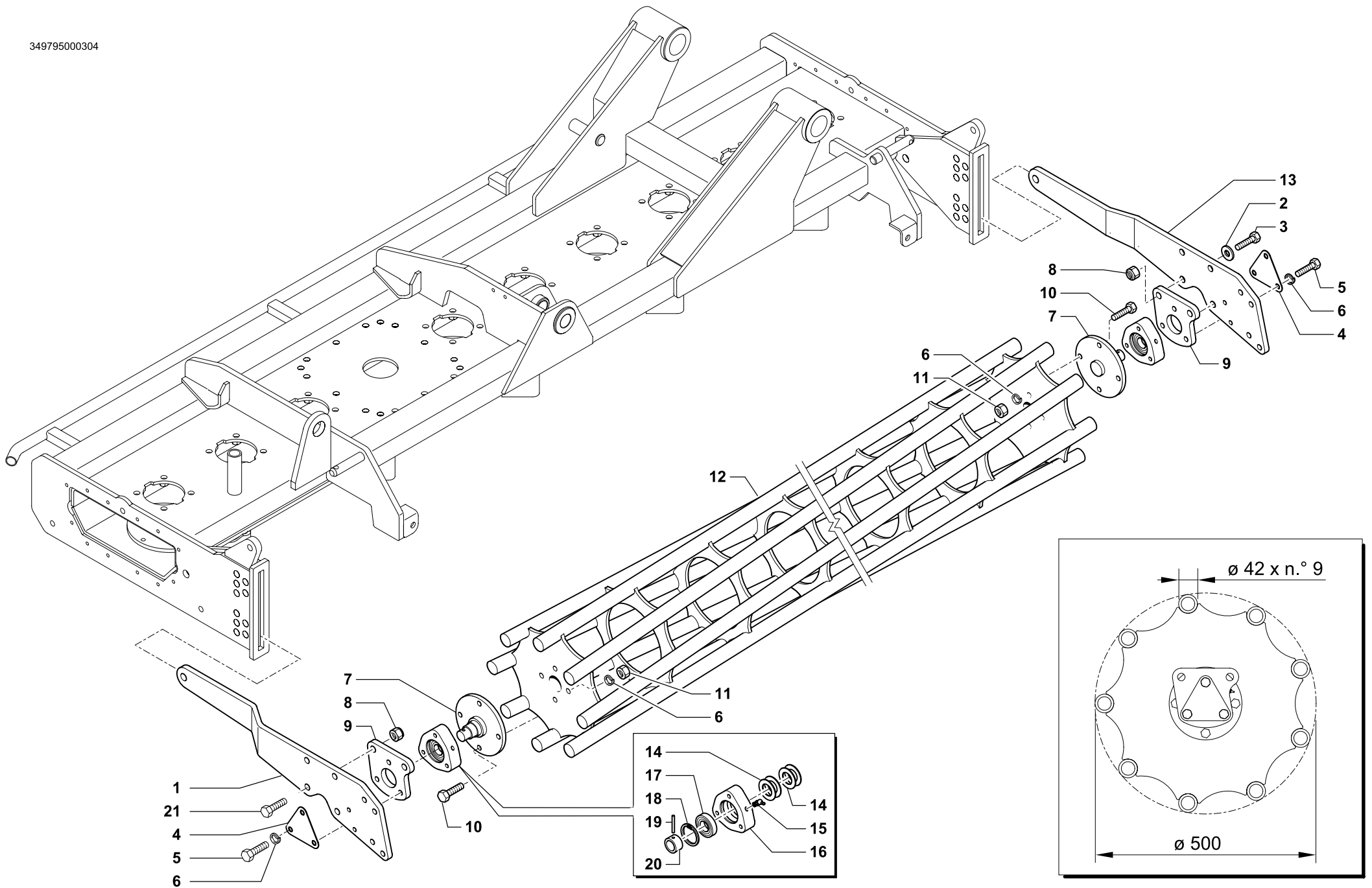
Rev. **00 0304**



KIT PARASASSI • LOWER HOUSING PROTECTION
HALTERUNG SCHUTZ • KIT PROTEGE PIERRES

Tav. 349119 Rev. 00 0304
Tab.
Taf.

RIF.	N. CODICE	DENOMINAZIONE	DENOMINATION	BEZEICHNUNG	DENOMINATION	
1	004004	Dado	Nut	Mutter	Ecrou	
2	011004	Grower	Grower	Federscheibe	Grower	
3	014147	Vite	Screw	Schraube	Vis	
500	4	612540	Protezione anteriore	Protection	Schutz	Protection
600		612541	Protezione anteriore	Protection	Schutz	Protection
700		612542	Protezione anteriore	Protection	Schutz	Protection
500	5	612530	Protezione posteriore	Protection	Schutz	Protection
600		612531	Protezione posteriore	Protection	Schutz	Protection
700		612532	Protezione posteriore	Protection	Schutz	Protection
500		671997	Kit parasassi	Lower housing protection	Halterung chutz	Kit pritege pierres
600		671998	Kit parasassi	Lower housing protection	Halterung chutz	Kit pritege pierres
700		671999	Kit parasassi	Lower housing protection	Halterung chutz	Kit pritege pierres



RULLO GABBIA Ø 500 SINISTRO • L.H. CAGE ROLLER Ø 500
 KÄFIGWALZE Ø 500 LINKS • ROULEAU CAGE Ø 500 GAUCHE

Tav. Tab. Taf.	349795	Rev.	00 0304
----------------------	---------------	------	----------------



RULLO GABBIA Ø 500 SINISTRO • L.H. CAGE ROLLER Ø 500
KÄFIGWALZE Ø 500 LINKS • ROULEAU CAGE Ø 500 GAUCHE

Tav.
Tab.
Taf.

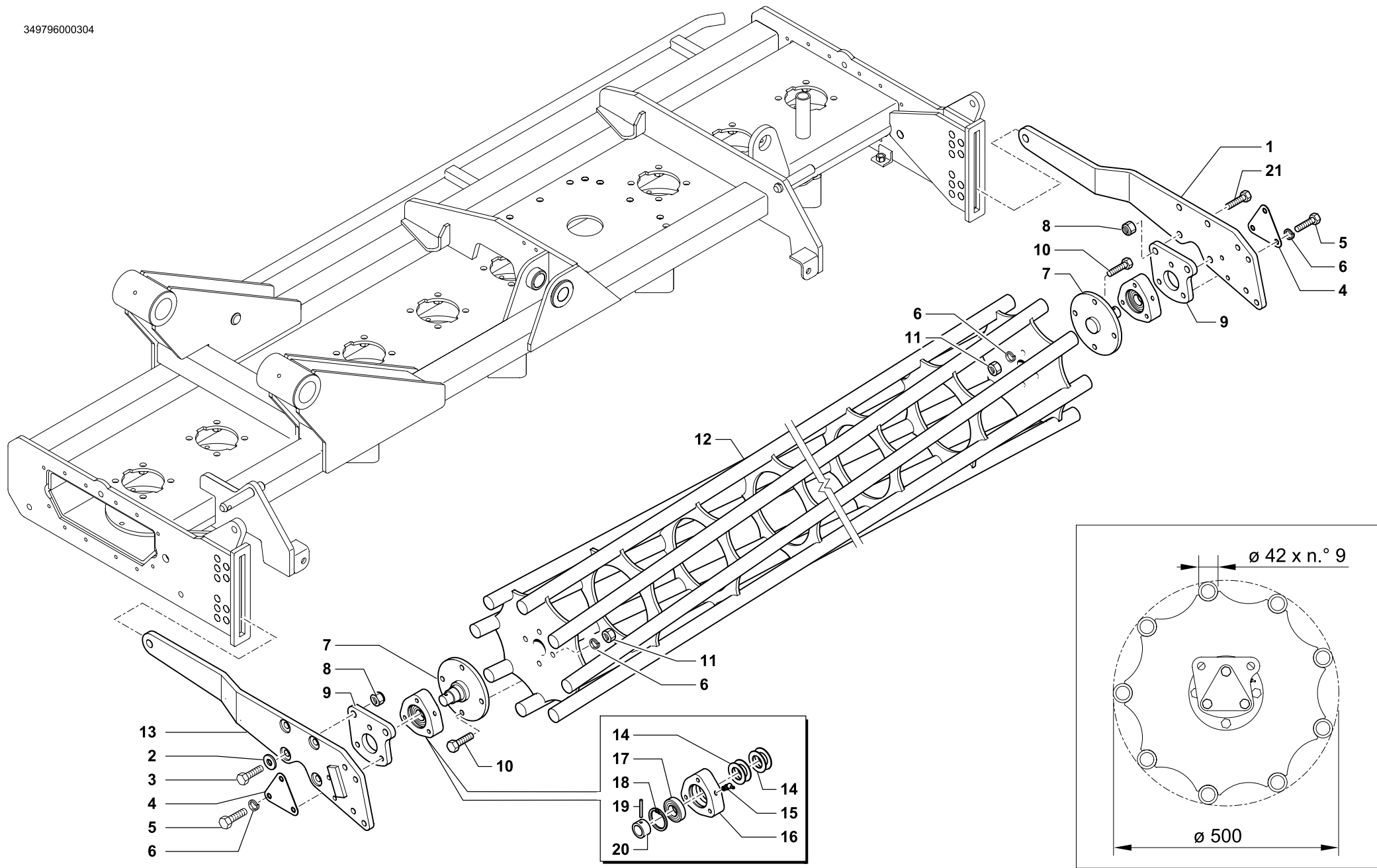
349795

Rev.

00

0304

RIF.	N. CODICE	DENOMINAZIONE	DENOMINATION	BEZEICHNUNG	DENOMINATION
1	911572	Braccio esterno sinistro	Arm	Arm	Bras
2	010006	Rondella	Washer	Unterlegscheibe	Rondelle
3	014192	Vite	Screw	Schraube	Vis
4	612372	Chiusura	Plate	Plate	Platte
5	014145	Vite	Screw	Schraube	Vis
6	011003	Grower	Grower	Federscheibe	Grower
7	661401	Fusello	Stub axle	Flansch	Fusee
8	004072	Dado	Nut	Mutter	Ecrou
9	661402	Piastra	Plate	Plate	Platte
10	014254	Vite	Screw	Schraube	Vis
11	004030	Dado	Nut	Mutter	Ecrou
500	12	998232	Rullo gabbia	Cage roller	Rouleau cage
600		998234	Rullo gabbia	Cage roller	Rouleau cage
700		998236	Rullo gabbia	Cage roller	Rouleau cage
13	911582	Braccio interno sinistro	Arm	Arm	Bras
14	099018	Gruppo parapolvere	Dust cover	Staubdeckel	Cache anti poussière
15	008005	Ingrassatore	Grease nipple	Fettbuechse	Graisneur
16	421604	Supporto	Support	Halterung	Support
17	003051	Cuscinetto	Bearing	Kugellager	Roulement
18	001006	Anello di arresto	Stop ring	Sperring	Bague d'arret
19	013019	Spina	Pin	Stift	Goupille
20	661403	Bussola	Bush	Buchse	Bague
21	014198	Vite	Screw	Schraube	Vis



RULLO GABBIA \varnothing 500 DESTRO • R.H. CAGE ROLLER \varnothing 500
 KÄFIGWALZE \varnothing 500 RECHTS • ROULEAU CAGE \varnothing 500 DROITE

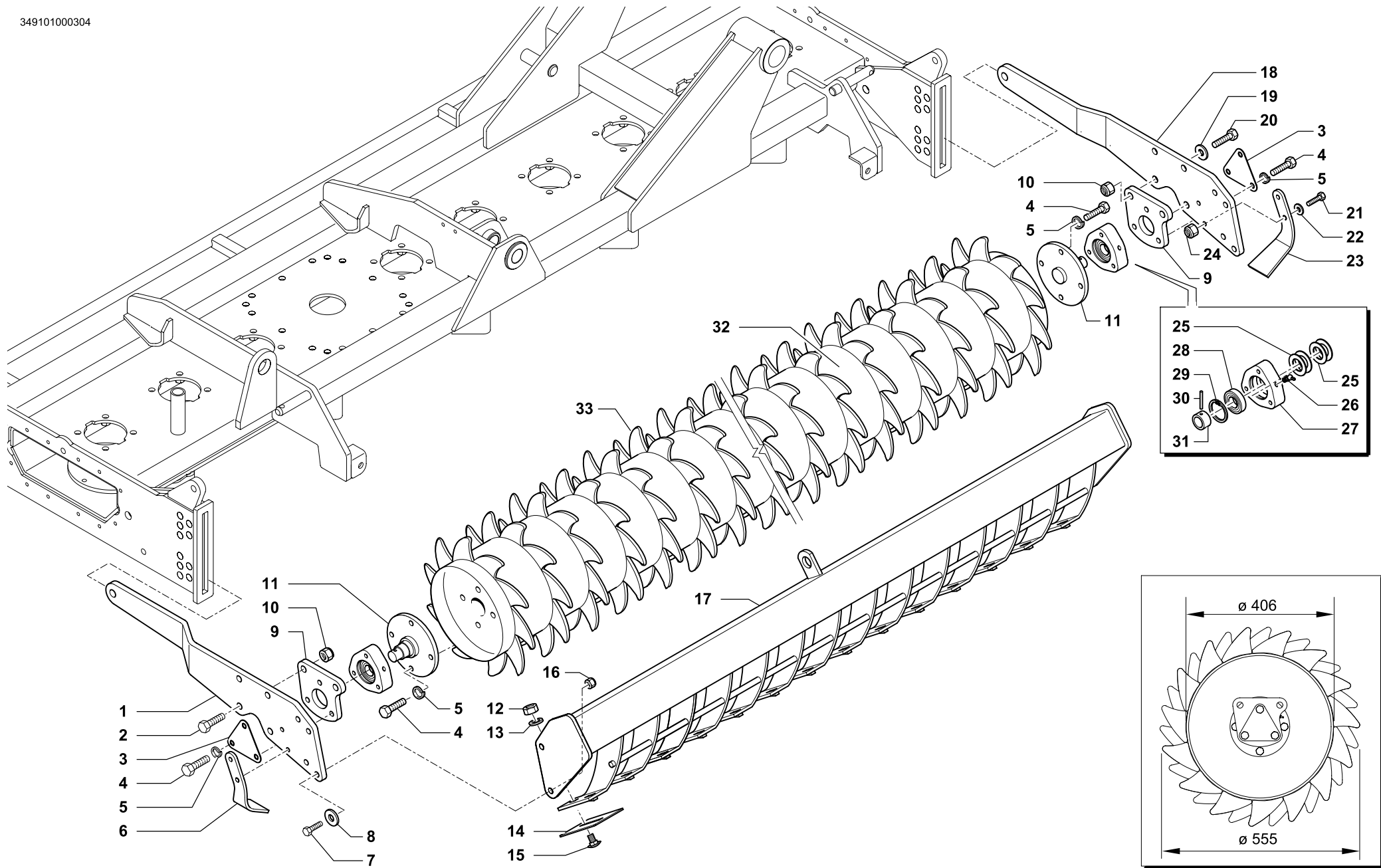
Tav. Tab. Taf.	349796	Rev.	00 0304
----------------------	---------------	------	----------------



RULLO GABBIA Ø 500 DESTRO • R.H. CAGE ROLLER Ø 500
KÄFIGWALZE Ø 500 RECHTS • ROULEAU CAGE Ø 500 DROITE

Tav. 349796 Rev. 00 0304
Tab.
Taf.

RIF.	N. CODICE	DENOMINAZIONE	DENOMINATION	BEZEICHNUNG	DENOMINATION
1	911573	Braccio esterno destro	Arm	Arm	Bras
2	010006	Rondella	Washer	Unterlegscheibe	Rondelle
3	014192	Vite	Screw	Schraube	Vis
4	612372	Chiusura	Plate	Plate	Platte
5	014145	Vite	Screw	Schraube	Vis
6	011003	Grower	Grower	Federscheibe	Grower
7	661401	Fusello	Stub axle	Flansch	Fusee
8	004072	Dado	Nut	Mutter	Ecrou
9	661402	Piastra	Plate	Plate	Platte
10	014254	Vite	Screw	Schraube	Vis
11	004030	Dado	Nut	Mutter	Ecrou
500	12	998232	Rullo gabbia	Cage roller	Rouleau cage
600		998234	Rullo gabbia	Cage roller	Rouleau cage
700		998236	Rullo gabbia	Cage roller	Rouleau cage
13	911583	Braccio interno destro	Arm	Arm	Bras
14	099018	Gruppo parapolvere	Dust cover	Staubdeckel	Cache anti poussière
15	008005	Ingrassatore	Grease nipple	Fettbuechse	Graisneur
16	421604	Supporto	Support	Halterung	Support
17	003051	Cuscinetto	Bearing	Kugellager	Roulement
18	001006	Anello di arresto	Stop ring	Sperring	Bague d'arret
19	013019	Spina	Pin	Stift	Goupille
20	661403	Bussola	Bush	Buchse	Bague
21	014198	Vite	Screw	Schraube	Vis



RULLO PACKER Ø 406 SINISTRO • L.H. PACKER ROLLER Ø 406
 PACKERWALZE Ø 406 LINKS • ROULEAU PACKER Ø 406 GAUCHE

Tav. Tab. Taf.	349101	Rev.	00 0304
----------------------	---------------	------	----------------



RULLO PACKER Ø 406 SINISTRO • L.H. PACKER ROLLER Ø 406
PACKERWALZE Ø 406 LINKS • ROULEAU PACKER Ø 406 GAUCHE

Tav. 349101 Rev. 00 0304
Tab. Taf.

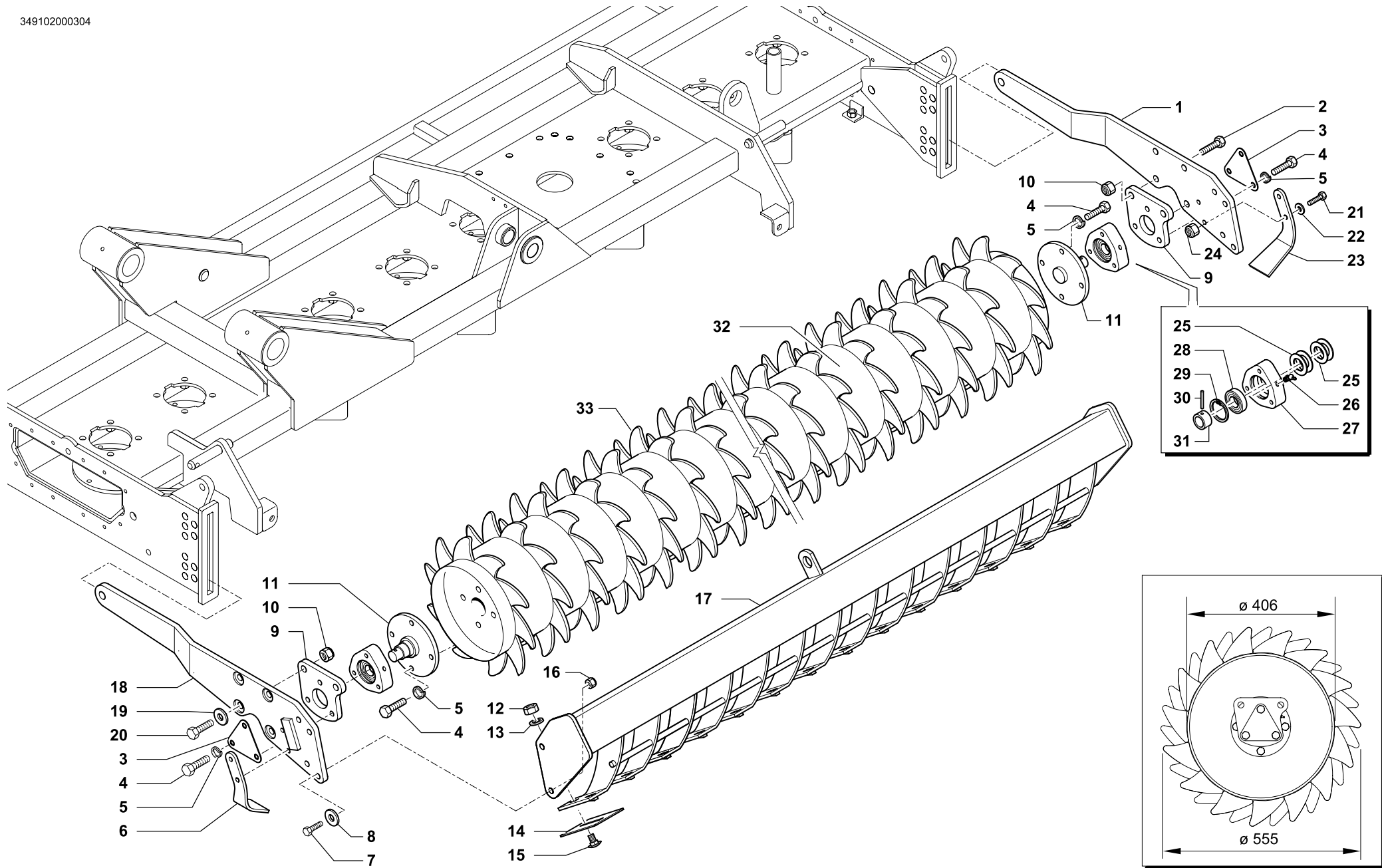
RIF.	N. CODICE	DENOMINAZIONE	DENOMINATION	BEZEICHNUNG	DENOMINATION
1	911572	Braccio esterno sinistro	Arm	Arm	Bras
2	014192	Vite	Screw	Schraube	Vis
3	612372	Chiusura	Plate	Plate	Platte
4	014145	Vite	Screw	Schraube	Vis
5	011003	Grower	Grower	Federscheibe	Grower
6	911629	Raschietto laterale SX	Scraper	Schaber	Racloir
7	014019	Vite	Screw	Schraube	Vis
8	010002	Rondella	Washer	Unterlegscheibe	Rondelle
9	661402	Piastra	Plate	Plate	Platte
10	004072	Dado	Nut	Mutter	Ecrou
11	661401	Fusello	Stub axle	Flansch	Fusee
12	004003	Dado	Nut	Mutter	Ecrou
13	011033	Grower	Grower	Federscheibe	Grower
14	911601	Raschietto	Scraper	Schaber	Racloir
15	014386	Vite	Screw	Schraube	Vis
16	004054	Dado	Nut	Mutter	Ecrou
500	961912	Barra porta raschietti	Scratcher support	Schaberhalter	Porte-racloir
600	961914	Barra porta raschietti	Scratcher support	Schaberhalter	Porte-racloir
700	961916	Barra porta raschietti	Scratcher support	Schaberhalter	Porte-racloir
18	911582	Braccio interno sinistro	Arm	Arm	Bras
19	010006	Rondella	Washer	Unterlegscheibe	Rondelle
20	014198	Vite	Screw	Schraube	Vis
21	014256	Vite	Screw	Schraube	Vis
22	010004	Rondella	Washer	Unterlegscheibe	Rondelle
23	911630	Raschietto laterale DX	Scraper	Schaber	Racloir
24	004084	Dado	Nut	Mutter	Ecrou
25	099018	Gruppo parapolvere	Dust cover	Staubdeckel	Cache anti poussière
26	008005	Ingrassatore	Grease nipple	Fettbuechse	Graisser
27	421604	Supporto	Support	Halterung	Support
28	003051	Cuscinetto	Bearing	Kugellager	Roulement
29	001006	Anello di arresto	Stop ring	Sperring	Bague d'arret
30	013019	Spina	Pin	Stift	Goupille
31	661403	Bussola	Bush	Buchse	Bague



RULLO PACKER Ø 406 SINISTRO • L.H. PACKER ROLLER Ø 406
PACKERWALZE Ø 406 LINKS • ROULEAU PACKER Ø 406 GAUCHE

Tav. Tab. Taf.	349101	Rev.	00	0304
----------------------	---------------	------	-----------	-------------

RIF.	N. CODICE	DENOMINAZIONE	DENOMINATION	BEZEICHNUNG	DENOMINATION	
<input type="checkbox"/> 500	32	971002	Rullo packer	Packer roller	Packerwalze	Rouleau packer
<input type="checkbox"/> 600		971004	Rullo packer	Packer roller	Packerwalze	Rouleau packer
<input type="checkbox"/> 700		971006	Rullo packer	Packer roller	Packerwalze	Rouleau packer
	33	412782	Dente (da saldare)	Tine (to be welded)	Zahn (zum schweissen)	Dent (à souder)



RULLO PACKER Ø 406 DESTRO • R.H. PACKER ROLLER Ø 406
PACKERWALZE Ø 406 RECHTS • ROULEAU PACKER Ø 406 DROITE

Tav. Tab. Taf.	349102	Rev.	00 0304
----------------------	---------------	------	----------------



RULLO PACKER Ø 406 DESTRO • R.H. PACKER ROLLER Ø 406
PACKERWALZE Ø 406 RECHTS • ROULEAU PACKER Ø 406 DROITE

Tav. 349102 Rev. 00 0304
Tab.
Taf.

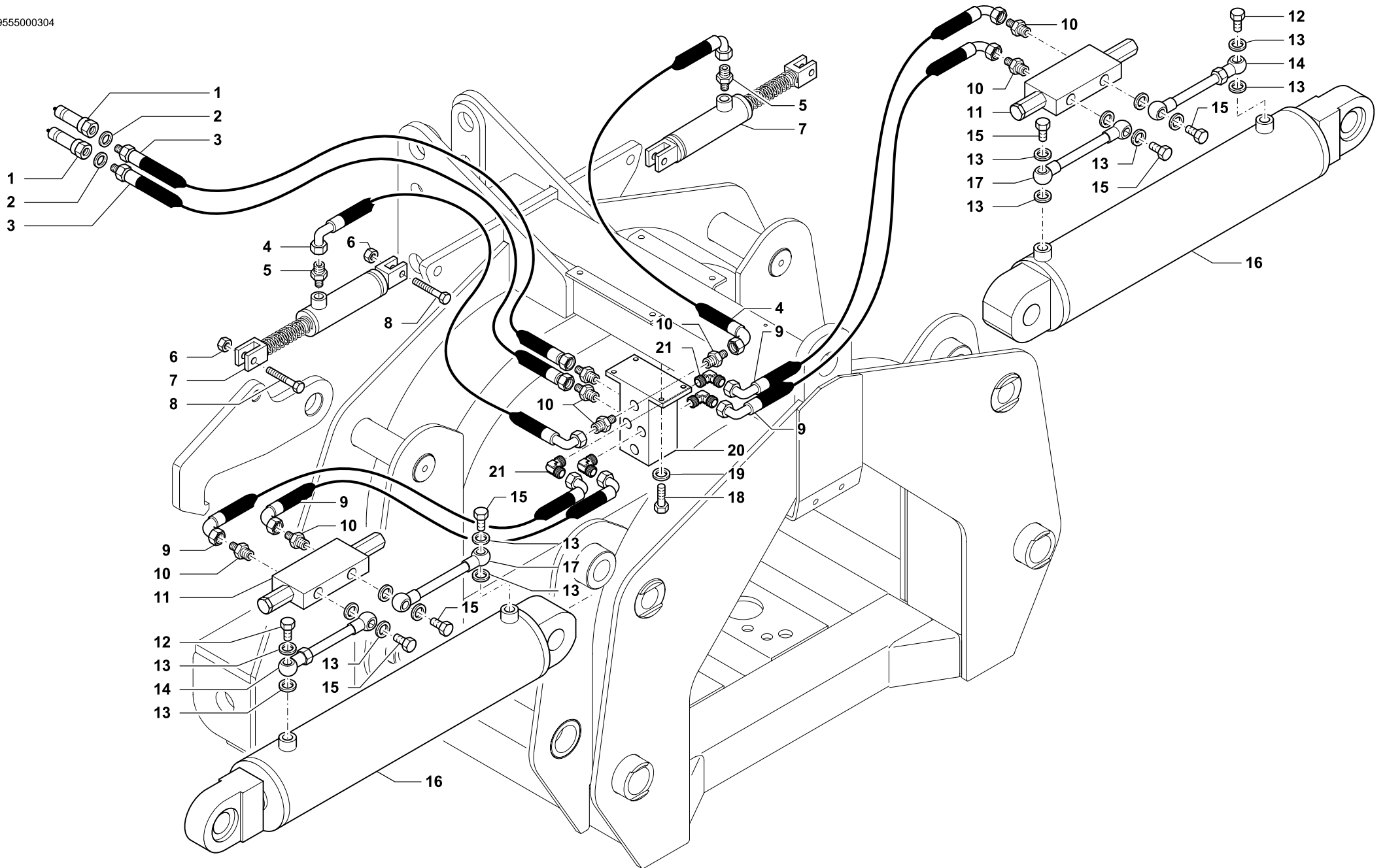
RIF.	N. CODICE	DENOMINAZIONE	DENOMINATION	BEZEICHNUNG	DENOMINATION
1	911573	Braccio esterno destro	Arm	Arm	Bras
2	014192	Vite	Screw	Schraube	Vis
3	612372	Chiusura	Plate	Plate	Platte
4	014145	Vite	Screw	Schraube	Vis
5	011003	Grower	Grower	Federscheibe	Grower
6	911629	Raschietto laterale SX	Scraper	Schaber	Racloir
7	014019	Vite	Screw	Schraube	Vis
8	010002	Rondella	Washer	Unterlegscheibe	Rondelle
9	661402	Piastra	Plate	Plate	Platte
10	004072	Dado	Nut	Mutter	Ecrou
11	661401	Fusello	Stub axle	Flansch	Fusee
12	004003	Dado	Nut	Mutter	Ecrou
13	011033	Grower	Grower	Federscheibe	Grower
14	911601	Raschietto	Scraper	Schaber	Racloir
15	014386	Vite	Screw	Schraube	Vis
16	004054	Dado	Nut	Mutter	Ecrou
500	961912	Barra porta raschietti	Scratcher support	Schaberhalter	Porte-racloir
600	961914	Barra porta raschietti	Scratcher support	Schaberhalter	Porte-racloir
700	961916	Barra porta raschietti	Scratcher support	Schaberhalter	Porte-racloir
18	911583	Braccio interno destro	Arm	Arm	Bras
19	010006	Rondella	Washer	Unterlegscheibe	Rondelle
20	014198	Vite	Screw	Schraube	Vis
21	014256	Vite	Screw	Schraube	Vis
22	010004	Rondella	Washer	Unterlegscheibe	Rondelle
23	911630	Raschietto laterale DX	Scraper	Schaber	Racloir
24	004084	Dado	Nut	Mutter	Ecrou
25	099018	Gruppo parapolvere	Dust cover	Staubdeckel	Cache anti poussière
26	008005	Ingrassatore	Grease nipple	Fettbuechse	Graisser
27	421604	Supporto	Support	Halterung	Support
28	003051	Cuscinetto	Bearing	Kugellager	Roulement
29	001006	Anello di arresto	Stop ring	Sperring	Bague d'arret
30	013019	Spina	Pin	Stift	Goupille
31	661403	Bussola	Bush	Buchse	Bague



RULLO PACKER Ø 406 DESTRO • R.H. PACKER ROLLER Ø 406
PACKERWALZE Ø 406 RECHTS • ROULEAU PACKER Ø 406 DROITE

Tav. Tab. Taf.	349102	Rev.	00 0304
----------------------	---------------	------	----------------

RIF.	N. CODICE	DENOMINAZIONE	DENOMINATION	BEZEICHNUNG	DENOMINATION	
<input type="checkbox"/> 500	32	971002	Rullo packer	Packer roller	Packerwalze	Rouleau packer
<input type="checkbox"/> 600		971004	Rullo packer	Packer roller	Packerwalze	Rouleau packer
<input type="checkbox"/> 700		971006	Rullo packer	Packer roller	Packerwalze	Rouleau packer
	33	412782	Dente (da saldare)	Tine (to be welded)	Zahn (zum schweissen)	Dent (à souder)



IMPIANTO IDRAULICO SOLLEVAMENTO • HYDRAULIC SYSTEM FOR LIFTING
HYDRAULIKANLAGE • INSTALLATION HYDRAULIQUE DE SOULEVEMENT

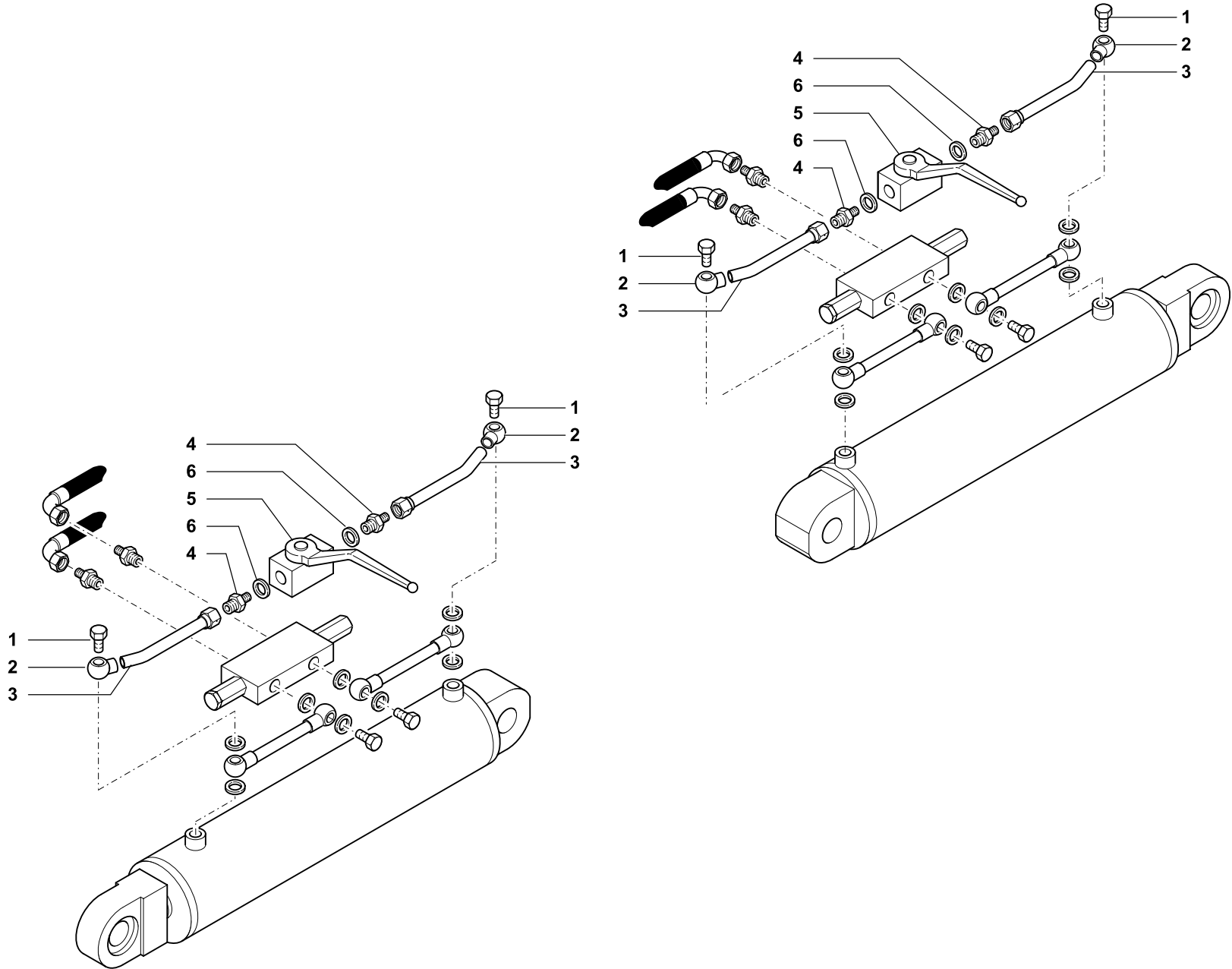
Tav. Tab. Taf.	349555	Rev.	00 0304
----------------------	---------------	------	----------------



IMPIANTO IDRAULICO SOLLEVAMENTO ERPICI • HYDRAULIC SYSTEM FOR LIFTING
HYDRAULIKANLAGE • INSTALLATION HYDRAULIQUE DE SOULEVEMENT

Tav. Tab. Taf.	349555	Rev.	00 0304
----------------------	---------------	------	----------------

RIF.	N. CODICE	DENOMINAZIONE	DENOMINATION	BEZEICHNUNG	DENOMINATION
1	022082	Innesto rapido	Shap-on coupling	Baionett kupplung	Joint a baionette
2	022087	Rosetta di rame	Washer	Unterlegscheibe	Rondelle
3	023178	Tubo	Hose	Schlauch	Tuyau
4	023119	Tubo	Hose	Schlauch	Tuyau
5	022130	Raccordo diritto	Connection	Anschluss	Raccord
6	004072	Dado	Nut	Mutter	Ecrou
7	671777	Martinetto completo	Complete jack	Komplette winde	Vérin complet
8	014192	Vite	Screw	Schraube	Vis
9	023184	Tubo	Hose	Schlauch	Tuyau
10	022129	Raccordo diritto	Connection	Anschluss	Raccord
11	021058	Valvola di blocco	Stop valve	Sperrventil	Suopape d'arret
12	022175	Vite strozzata	Screw	Schraube	Vis
13	022086	Rosetta di rame	Washer	Unterlegscheibe	Rondelle
14	621740	Tubo valvola	Hose	Schlauch	Tuyau
15	022070	Vite cava	Screw	Schraube	Vis
16	671816	Martinetto completo	Complete jack	Komplette winde	Vérin complet
17	621721	Tubo valvola	Hose	Schlauch	Tuyau
18	014032	Vite	Screw	Schraube	Vis
19	010015	Rondella	Washer	Unterlegscheibe	Rondelle
20	462265	Blocchetto ripartitore	Connection block	Kontrolmechanismus	Distributeur
21	022120	Raccordo 90°	Connection	Anschluss	Raccord



KIT SISTEMA FLOTTANTE • FLOATING SYSTEM
SCHWINGSYSTEM • KIT SYSTEME FLOTANT

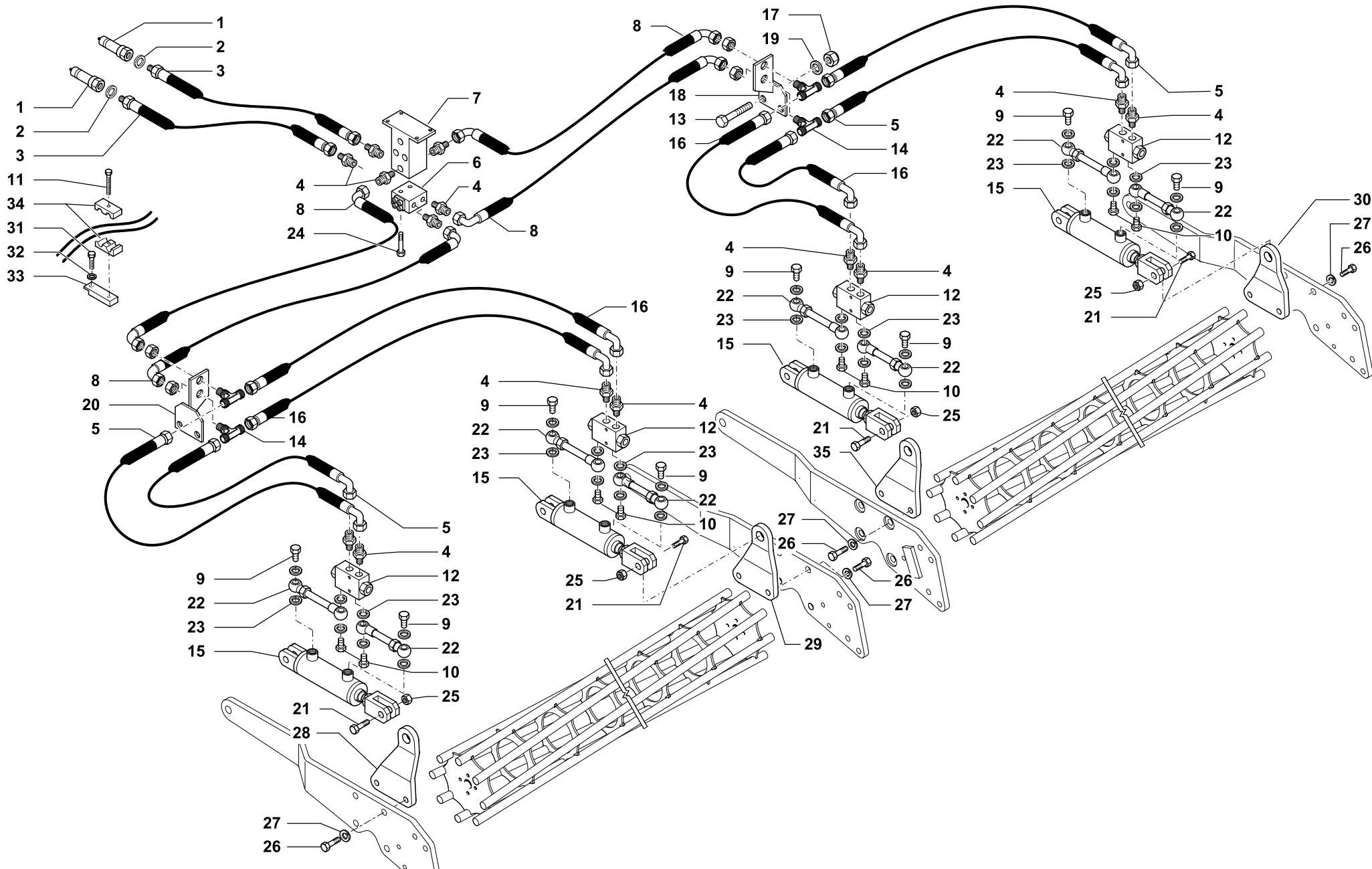
Tav.	349556	Rev.	00 0304
Tab.			
Taf.			



KIT SISTEMA FLOTTANTE • FLOATING SYSTEM
SCHWINGSYSTEM • KIT SYSTEME FLOTANT

Tav. Tab. Taf.	349556	Rev.	00	0304
----------------------	---------------	------	-----------	-------------

RIF.	N. CODICE	DENOMINAZIONE	DENOMINATION	BEZEICHNUNG	DENOMINATION
1	022166	Vite forata	Screw	Schraube	Vis
2	022151	Occhio	Pipe fitting	Rohrverschraubung	Raccord
3	021181	Tubo	Hose	Schlauch	Tuyau
4	022129	Raccordo	Connection	Anschluss	Raccord
5	021172	Rubinetto	Tap	Ablasshahn	Robinet
6	022086	Rondella rame	Washer	Unterlegscheibe	Rondelle
	971760	Kit sistema flottante	Floating system	Schwingsystem	Kit systeme flotant



IMPIANTO IDRAULICO SOLLEVAMENTO RULLI • HYDRAULIC SYSTEM FOR ROLLER LIFTING
HYDRAULISCHE ANLAGE FÜR WALZE BETEETIGUNG • INSTALLATION HYDRAULIQUE REGLAGE ROULEAUX

Tav.
Tab.
Taf. **349557**

Rev. **00 0304**



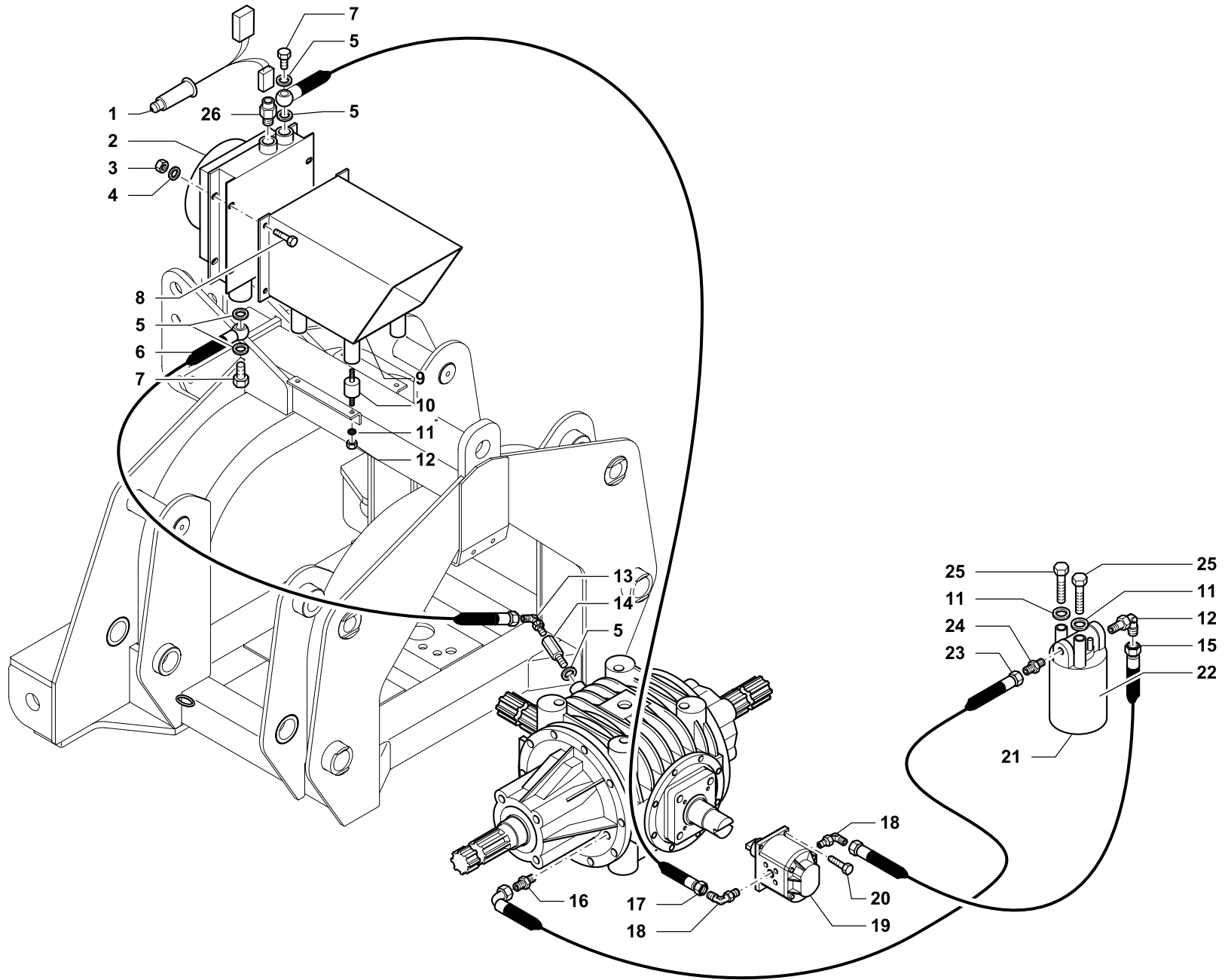
RIF.	N. CODICE	DENOMINAZIONE	DENOMINATION	BEZEICHNUNG	DENOMINATION
1	022082	Innesto rapido	Shap-on coupling	Baionett kupplung	Joint a baionette
2	022087	Rosetta di rame	Washer	Unterlegscheibe	Rondelle
3	023178	Tubo	Hose	Schlauch	Tuyau
4	022129	Raccordo	Connection	Anschluss	Raccord
500	5	023152	Tubo	Hose	Tuyau
600		023152	Tubo	Hose	Tuyau
700		023180	Tubo	Hose	Tuyau
6	021073	Divisore di flusso	Flow divider	Flussteiler	Diviseur de flux
7	662528	Blocchetto ripartitore	Connection block	Kontrolmechanismus	Distributeur
8	023183	Tubo	Hose	Schlauch	Tuyau
9	022070	Vite cava	Screw	Schraube	Vis
10	022175	Vite strozzata	Screw	Schraube	Vis
11	014070	Vite	Screw	Schraube	Vis
12	021087	Valvola di blocco	Stop valve	Sperrventil	Suopape d'arret
13	014176	Vite	Screw	Schraube	Vis
14	022178	Raccordo T	Connection	Anschluss	Raccord
15	671815	Martinetto completo	Complete jack	Komplette winde	Vérin complet
16	023152	Tubo	Hose	Schlauch	Tuyau
17	004054	Dado	Nut	Mutter	Ecrou
18	661558	Supporto valvola	Support	Halterung	Support
19	010002	Rondella	Washer	Unterlegscheibe	Rondelle
20	661557	Supporto passaparatia sx	Support	Halterung	Support
21	014221	Vite	Screw	Schraube	Vis
22	621718	Tubo valvola	Hose	Schlauch	Tuyau
23	022086	Rosetta di rame	Washer	Unterlegscheibe	Rondelle
24	014122	Vite	Screw	Schraube	Vis
25	004072	Dado	Nut	Mutter	Ecrou
26	014200	Vite	Screw	Schraube	Vis
27	011008	Grower	Grower	Federscheibe	Grower
28	623358	Attacco esterno sinistro	L.H. hitch	L.H. kupplung	Attelage gauche
29	623398	Attacco interno sinistro	Hitch	Kupplung	Attelage
30	623359	Attacco esterno destro	R.H. hitch	R.H. kupplung	Attelage droite
31	014149	Vite	Screw	Schraube	Vis



IMPIANTO IDRAULICO SOLLEVAMENTO RULLI • HYDRAULIC SYSTEM FOR ROLLER LIFTING
HYDRAULISCHE ANLAGE FÜR WALZE BETEETIGUNG • INSTALLATION HYDRAULIQUE REGLAGE ROULEAUX

Tav. Tab. Taf.	349557	Rev.	00	0304
----------------------	---------------	------	-----------	-------------

RIF.	N. CODICE	DENOMINAZIONE	DENOMINATION	BEZEICHNUNG	DENOMINATION
32	011012	Rondella	Washer	Unterlegscheibe	Rondelle
33	612658	Staffa supporto collare	Bracket	Tragbuegel	Support collier
34	022143	Collare fermatubo	Collar	Bund	Collier
35	623397	Attacco interno destro	Hitch	Kupplung	Attelage



KIT DI RAFFREDDAMENTO • COOLING KIT
KUEHLUNGSKIT • KIT DE REFRROIDISSEMENT

Tav. Tab. Taf.	349558	Rev.	00 0304
----------------------	---------------	------	----------------

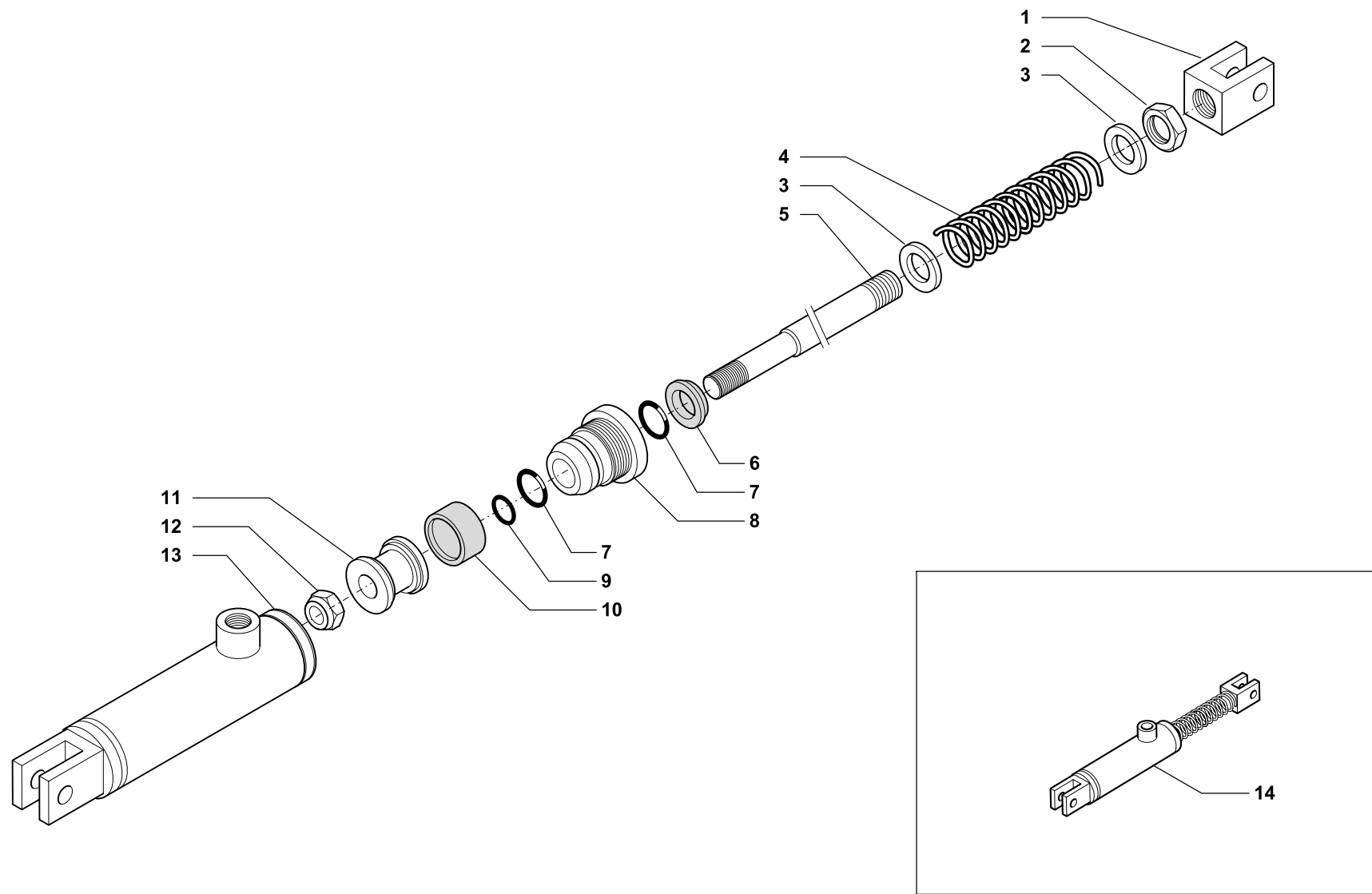


KIT DI RAFFREDDAMENTO • COOLING KIT
KUEHLUNGSKIT • KIT DE REFROIDISSEMENT

Tav.
Tab.
Taf. **349558**

Rev. **00 0304**

RIF.	N. CODICE	DENOMINAZIONE	DENOMINATION	BEZEICHNUNG	DENOMINATION
1	027001	Cavo alimentazione	Cable	Kabel	Cable
2	021055	Scambiatore	Exchange	Waermeaustauscher	Echangeur
3	004055	Dado	Nut	Mutter	Ecrou
4	011001	Grower	Grower	Federscheibe	Grower
5	022087	Rondella	Washer	Unterlegscheibe	Rondelle
6	023182	Tubo	Hose	Schlauch	Tuyau
7	022030	Vite forata	Capstan screw	Lochschraube	Vis trouee
8	014001	Vite	Screw	Schraube	Vis
9	661110	Convogliatore	Air duct	Kühlerhaube	Convoyeur d'air
10	099124	Puffer	Screw shock absorber	Pufferfeder	Ammortisseur
11	010023	Rondella	Washer	Unterlegscheibe	Rondelle
12	022119	Raccordo	Connection	Anschluss	Raccord
13	022223	Raccordo 90°	Connection	Anschluss	Raccord
14	021064	Colonna	Column	Saeule	Colonne
15	023128	Tubo	Hose	Schlauch	Tuyau
16	022159	Raccordo 90°	Connection	Anschluss	Raccord
17	023181	Tubo	Hose	Schlauch	Tuyau
18	022120	Raccordo 90°	Connection	Anschluss	Raccord
19	021054	Pompa	Pump	Pumpe	Pompe
20	014306	Vite	Screw	Schraube	Vis
21	021052	Filtro	Filter	Filter	Filtre
22	021053	Cartuccia	Cartridge	Patrone	Cartouche
23	023127	Tubo	Hose	Schlauch	Tuyau
24	022121	Raccordo	Connection	Anschluss	Raccord
25	014001	Vite	Screw	Schraube	Vis
26	021061	Termostato	Thermostat	Thermostat	Thermostat





MARTINETTO AZIONAMENTO GANCIO DI BLOCCAGGIO • BLOCKING HOOK COMMANDING JACK
SPERREHACKEN ANTRIEB WINDE • VERIN CROCHET DE BLOCAGE

Tav.
Tab.
Taf.

124206

Rev.

01

0699

RIF.	N. CODICE	DENOMINAZIONE	DENOMINATION	BEZEICHNUNG	DENOMINATION
1	623611	Forcella filettata	Fork	Gabelstueck	Fourche
2	004040	Dado	Nut	Mutter	Ecrou
3	010006	Rondella	Washer	Unterlegscheibe	Rondelle
4	423557	Molla	Spring	Feder	Ressort
5	623810	Stelo	Rod	Spindel	Tige
6	007198	Guarnizione	Gasket	Dichtring	Joint
7	007196	Guarnizione	Gasket	Dichtring	Joint
8	623809	Guida stelo	Stem guide	Schaftsführung	Guide axe
9	007197	Guarnizione	Gasket	Dichtring	Joint
10	007191	Guarnizione	Gasket	Dichtring	Joint
11	623808	Pistone	Piston	Kolben	Piston
12	004087	Dado	Nut	Mutter	Ecrou
13	662544	Tubo	Hose	Schlauch	Tuyau
14	671777	Martinetto completo	Complete jack	Komplette winde	Vérin complet