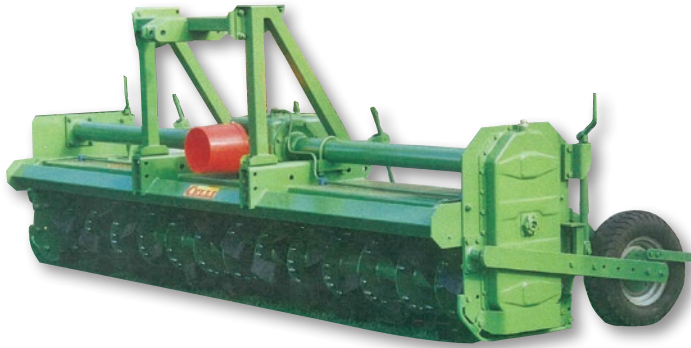


FARMGARD
ROBUST MACHINERY THAT WORKS

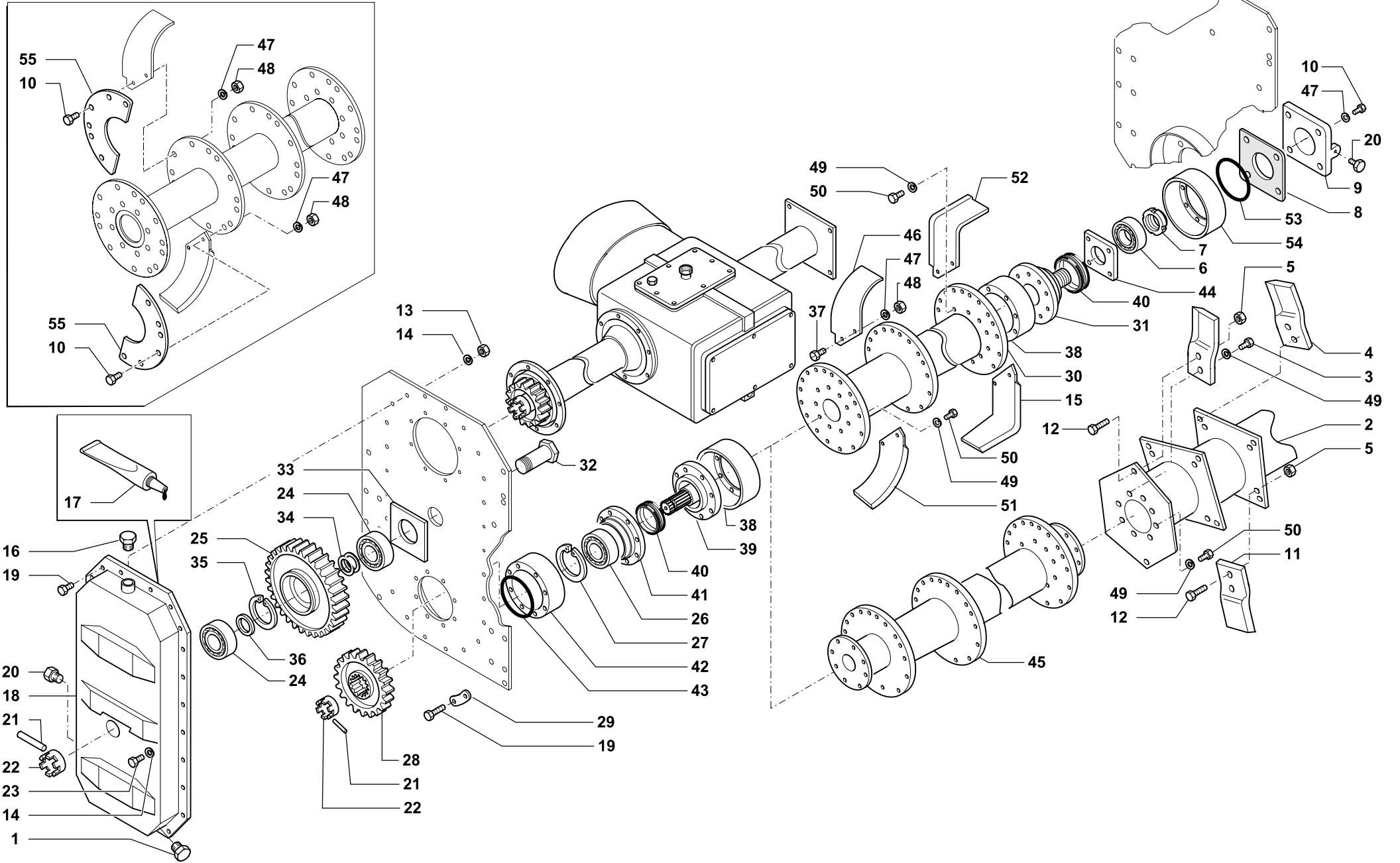


K / FK

CELLI SPARE PARTS REFERENCE GUIDE

ROTARY HOE / SPIKE ROTOR





TRASMISSIONE • TRANSMISSION
UBERTRAGUNG • TRANSMISSION

Tav. Tab. Taf.	138408	Rev.	01 0699
----------------------	---------------	------	----------------



RIF.	N. CODICE	DENOMINAZIONE	DENOMINATION	BEZEICHNUNG	DENOMINATION	
	1	022009	Tappo	Plug	Verschluss	Bouchon
205	2	461902	Rotore a coltelli	Knife type drum	Messerwelle	Rotor a couteaux
230		461903	Rotore a coltelli	Knife type drum	Messerwelle	Rotor a couteaux
255		461904	Rotore a coltelli	Knife type drum	Messerwelle	Rotor a couteaux
280		461905	Rotore a coltelli	Knife type drum	Messerwelle	Rotor a couteaux
305		461906	Rotore a coltelli	Knife type drum	Messerwelle	Rotor a couteaux
330		461907	Rotore a coltelli	Knife type drum	Messerwelle	Rotor a couteaux
	3	014222	Vite	Screw	Schraube	Vis
	4	422630	Coltello destro	R.H.S. Knife	Messer rechts	Couteau droite
	5	004072	Dado	Nut	Mutter	Ecrou
	6	003006S	Cuscinetto	Bearing	Kugellager	Roulement
	7	005011	Ghiera	Ring nut	Nutmutter	Collier
	8	724507	Guarnizione	Gasket	Dichtring	Joint
	9	422627	Coperchio	Cover	Deckel	Couvercle
	10	014082	Vite	Screw	Schraube	Vis
	11	422631	Coltello sinistro	L.H.S. Knife	Messer links	Couteau gauche
	12	014261	Vite	Screw	Schraube	Vis
	13	004058	Dado	Nut	Mutter	Ecrou
	14	011002	Grower	Grower	Federscheibe	Grower
	15	722534	Zappa sinistra squadro	Blade	Messer	Lame
	16	022055	Tappo con sfiato 3/4 gas	Plug	Verschluss	Bouchon
	17	094006	Sigillante	Glue	Klebstoff	Colle
	18	461870	Coperchio carter	Cover	Deckel	Couvercle
	19	014205	Vite	Screw	Schraube	Vis
	20	022009	Tappo 1/4 gas	Plug	Verschluss	Bouchon
	21	002019	Spina elastica	Pin	Stift	Goupille
	22	423714	Dado a corona	Nut	Mutter	Ecrou
	23	014278	Vite	Screw	Schraube	Vis
	24	003135S	Cuscinetto	Bearing	Kugellager	Roulement
	25	422618	Ingranaggio Z 38	Gear	Zanhrad	Engrenage
	26	003133S	Cuscinetto	Bearing	Kugellager	Roulement
	27	001034	Anello di arresto	Stop ring	Sperring	Bague d'arret
	28	422619	Ingranaggio Z 28	Gear	Zanhrad	Engrenage



RIF.	N. CODICE	DENOMINAZIONE	DENOMINATION	BEZEICHNUNG	DENOMINATION	
	29	411511	Rosetta di sicurezza	Washer	Unterlegscheibe	Rondelle
205	30	461822	Rotore R	Rotor R	Rotor R	Rotor R
230		461823	Rotore R	Rotor R	Rotor R	Rotor R
255		461824	Rotore R	Rotor R	Rotor R	Rotor R
280		461825	Rotore R	Rotor R	Rotor R	Rotor R
305		461826	Rotore R	Rotor R	Rotor R	Rotor R
330		461827	Rotore R	Rotor R	Rotor R	Rotor R
	31	422621	Fusello destro	Drive hub	Nabe	Fusee
	32	423712	Perno	Pivot	Bolzen	Axe
	33	411603	Spessore	Spessore	Spacer	BeilagsscheibenEpaisseur
	34	811509	Serie spessori	Set spacers	Beilagscheiben	Serie d'epaisseurs
	35	001005	Anello di arresto	Stop ring	Sperring	Bague d'arret
	36	423717	Distanziale	Spacer	Distanztueck	Entretoise
	37	014004	Vite	Screw	Schraube	Vis
	38	411600	Parapolvere	Dust cover	Staubdeckel	Cache anti poussière
	39	422620	Mozzo	Hub	Nabe	Disque
	40	871504	Tenuta	Oil seal	Simmerring	Joint d'huile
	41	422625	Supporto sinistro	L.H. support	L.H. halterung	Support gauche
	42	411601	Parapolvere	Dust cover	Staubdeckel	Cache anti poussière
	43	007153	Guarnizione	Gasket	Dichtring	Joint
	44	422626	Supporto destro	R.H. support	R.H. halterung	Support droite
205	45	461832	Rotore CR	Rotor CR	Rotor CR	Rotor CR
230		461833	Rotore CR	Rotor CR	Rotor CR	Rotor CR
255		461834	Rotore CR	Rotor CR	Rotor CR	Rotor CR
280		461835	Rotore CR	Rotor CR	Rotor CR	Rotor CR
305		461836	Rotore CR	Rotor CR	Rotor CR	Rotor CR
330		461837	Rotore CR	Rotor CR	Rotor CR	Rotor CR
	46	722537	Zappa destra elicoidale	Right helicoidal blade	Gekrümmtes Messer R.H.	Lame helicöidale droit
	47	011004	Grower	Grower	Federscheibe	Grower
	48	004004	Dado	Nut	Mutter	Ecrou
	49	011005	Grower	Grower	Federscheibe	Grower
	50	014200	Vite	Screw	Schraube	Vis
	51	722538	Zappa sinistra elicoidale	Left helicoidal blade	Gekrümmtes Messer L.H.	Lame helicöidale gauche



TRASMISSIONE • TRANSMISSION
UBERTRAGUNG • TRANSMISSION

Tav.
Tab.
Taf.

138408

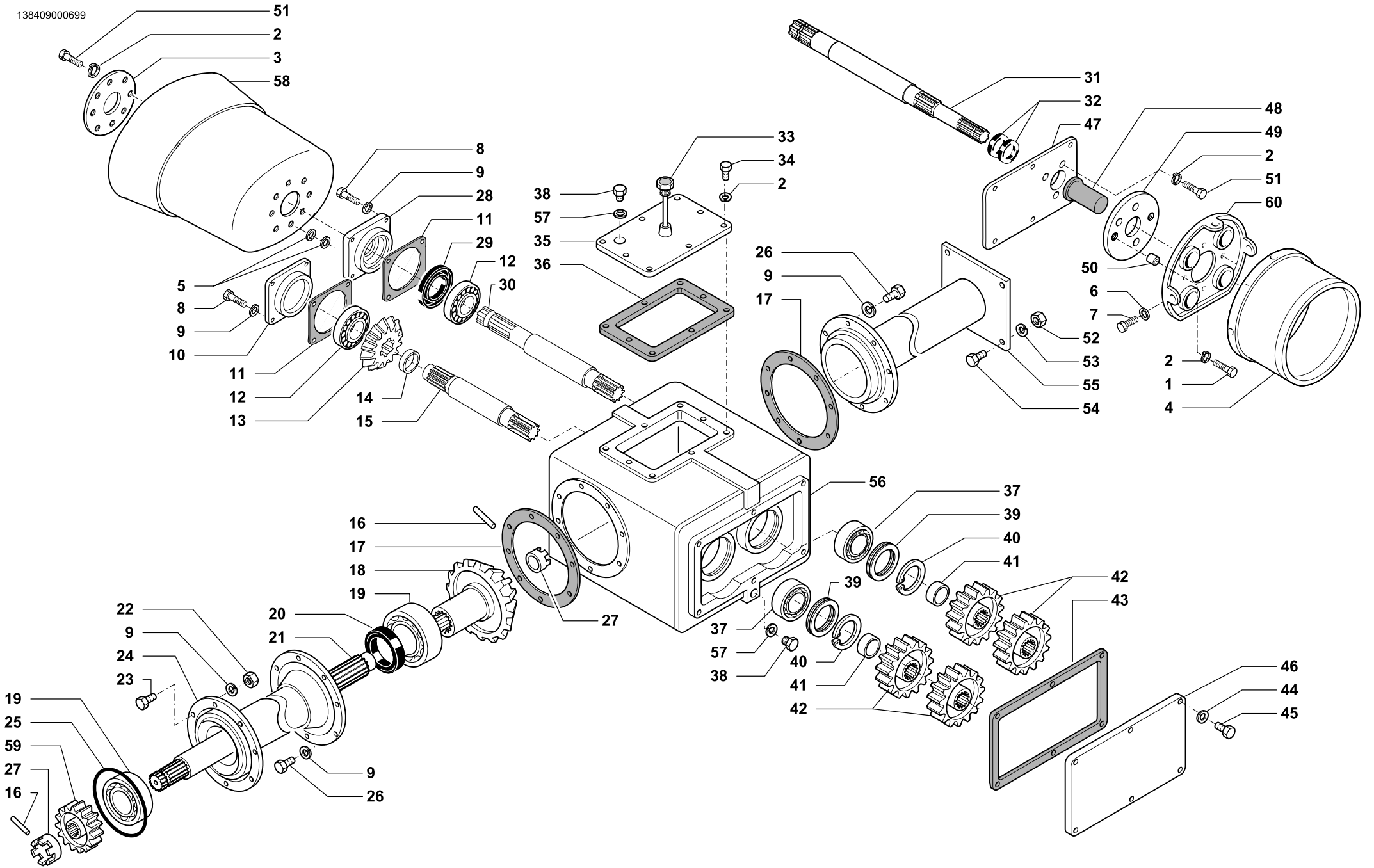
Rev.

01

0699

RIF.	N. CODICE	DENOMINAZIONE	DENOMINATION	BEZEICHNUNG	DENOMINATION
52	722533	Zappa destra squadro	Blade	Messer	Lame
53	007054	Guarnizione	Gasket	Dichtring	Joint
54	411602	Parapolvere destro	Dust cover	Staubdeckel	Cache anti poussière
55	712608	Controflangia	Flange	Flansch	Flasque

138409000699



SCATOLA CAMBIO 2 VELOCITÀ 540 E 1000G/M • 2 SPEED GEARBOX
 GETRIEBEGEHAUSE 2 GESCHW. • BÔITE 2 VITESSES



Tav. Tab. Taf.	138409	Rev.	01 0205
----------------------	---------------	------	----------------



SCATOLA CAMBIO 2 VELOCITÀ 540 E 1000G/M • 2 SPEED GEARBOX
GETRIEBEGEHAUSE 2 GESCHW. • BÖITE 2 VITESSES

Tav.
Tab.
Taf.

138409

Rev.

01

0205

RIF.	N. CODICE	DENOMINAZIONE	DENOMINATION	BEZEICHNUNG	DENOMINATION
1	014263	Vite	Screw	Schraube	Vis
2	011002	Grower	Grower	Federscheibe	Grower
3	612727	Flangia	Flange	Flansch	Flasque
4	124505	Cuffia	Guard	Schütz	Protection
5	010004	Rondella	Washer	Unterlegscheibe	Rondelle
6	010023	Rondella	Washer	Unterlegscheibe	Rondelle
7	014284	Vite	Screw	Schraube	Vis
8	014145	Vite	Screw	Schraube	Vis
9	011003	Grower	Grower	Federscheibe	Grower
10	421602	Coperchio	Cover	Deckel	Couvercle
11	424600	Guarnizione	Gasket	Dichtring	Joint
12	003044S	Cuscinetto	Bearing	Kugellager	Roulement
13	422615	Pignone Z15	Pinion	Pignon	Ritzel
14	423537	Distanziale	Spacer	Distanzstueck	Entretoise
15	423711	Albero	Shaft	Welle	Arbre
16	013034	Spina elastica	Pin	Stift	Goupille
17	424603	Guarnizione	Gasket	Dichtring	Joint
18	422616	Corona Z 26	Crownwheel	Zahnkranz	Couronne
19	003132S	Cuscinetto	Bearing	Kugellager	Roulement
20	007151	Paraolio	Oil seal	Simmerring	Joint d' huile
205	21	423702	Semiassa L= 966	Achswelle	Demi-axe
230		423703	Semiassa L=1091	Achswelle	Demi-axe
255		423704	Semiassa L=1216	Achswelle	Demi-axe
280		423705	Semiassa L=1341	Achswelle	Demi-axe
305		423706	Semiassa L=1466	Achswelle	Demi-axe
330		423707	Semiassa L=1591	Achswelle	Demi-axe
	22	004030	Dado	Nut	Ecrou
	23	014213	Vite	Screw	Vis
205	24	461812	Distanziale L=806	Distanzstueck	Entretoise
230		461813	Distanziale L=931	Distanzstueck	Entretoise
255		461814	Distanziale L=1056	Distanzstueck	Entretoise
280		461815	Distanziale L=1181	Distanzstueck	Entretoise
305		461816	Distanziale L=1306	Distanzstueck	Entretoise
330		461817	Distanziale L=1431	Distanzstueck	Entretoise



SCATOLA CAMBIO 2 VELOCITÀ 540 E 1000G/M • 2 SPEED GEARBOX
GETRIEBEGEHAUSE 2 GESCHW. • BÖITE 2 VITESSES

Tav.
Tab.
Taf.

138409

Rev.

01 0205

RIF.	N. CODICE	DENOMINAZIONE	DENOMINATION	BEZEICHNUNG	DENOMINATION
25	007154	Guarnizione	Gasket	Dichtring	Joint
26	014106	Vite	Screw	Schraube	Vis
27	423713	Dado corona	Nut	Mutter	Ecrou
28	421606	Coperchio	Cover	Deckel	Couvercle
29	007152	Paraolio	Oil seal	Simmerring	Joint d' huile
30	423710	Albero 1" 3/4 Z6	Shaft	Welle	Arbre
	423787	Albero 1" 3/4 Z20	Shaft	Welle	Arbre
31	423721	Albero (P.D.F posteriore) 1" 3/4 Z6	Shaft	Welle	Arbre
	423788	Albero (P.D.F posteriore) 1" 3/4 Z20	Shaft	Welle	Arbre
32	007160	Paraolio (P.D.F posteriore)	Oil seal	Simmerring	Joint d' huile
33	022068	Tappo 3/4 asta L=270	Plug	Verschluss	Bouchon
34	014227	Vite	Screw	Schraube	Vis
35	461073	Coperchio predisposto kit raffredd.	Cover	Deckel	Couvercle
36	424601	Guarnizione	Gasket	Dichtring	Joint
37	003112S	Cuscinetto	Bearing	Kugellager	Roulement
38	022153	Tappo 3/8 gas	Plug	Verschluss	Bouchon
39	111504	Serie spessori	Set spacers	Beilagscheiben	Serie d'épaisseurs
40	001033	Anello di arresto	Stop ring	Sperring	Bague d'arret
41	423715	Distanziale	Spacer	Distanzstueck	Entretoise
540G/M	42	422600	Ingranaggio Z 18	Zanhrad	Engrenage
540G/M		422601	Ingranaggio Z 19	Zanhrad	Engrenage
540G/M		422602	Ingranaggio Z 20	Zanhrad	Engrenage
540G/M		422603	Ingranaggio Z 21	Zanhrad	Engrenage
1000G/M		422606	Ingranaggio Z 14	Zanhrad	Engrenage
1000G/M		422607	Ingranaggio Z 15	Zanhrad	Engrenage
1000G/M		422612	Ingranaggio Z 24	Zanhrad	Engrenage
1000G/M		422613	Ingranaggio Z 25	Zanhrad	Engrenage
43	424602	Guarnizione	Gasket	Dichtring	Joint
44	011012	Rondella	Washer	Unterlegscheibe	Rondelle
45	014205	Vite	Screw	Schraube	Vis
46	421603	Coperchio	Cover	Deckel	Couvercle
47	421605	Coperchio (P.D.F posteriore)	Cover	Deckel	Couvercle
48	099041	Protezione (P.D.F posteriore)	Protection	Schutz	Protection



SCATOLA CAMBIO 2 VELOCITÀ 540 E 1000G/M • 2 SPEED GEARBOX
GETRIEBEGEHAUSE 2 GESCHW. • BÔITE 2 VITESSES

Tav.
Tab.
Taf.

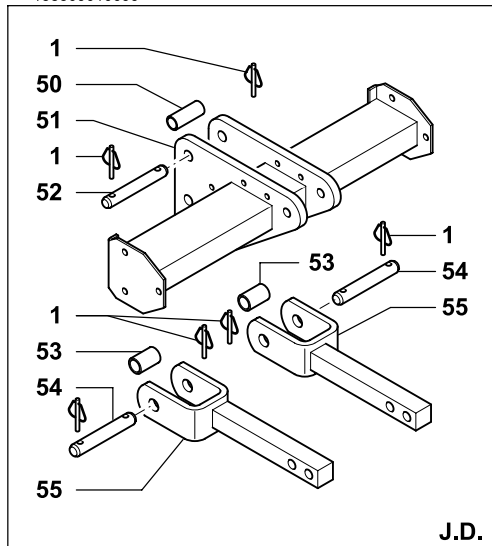
138409

Rev.

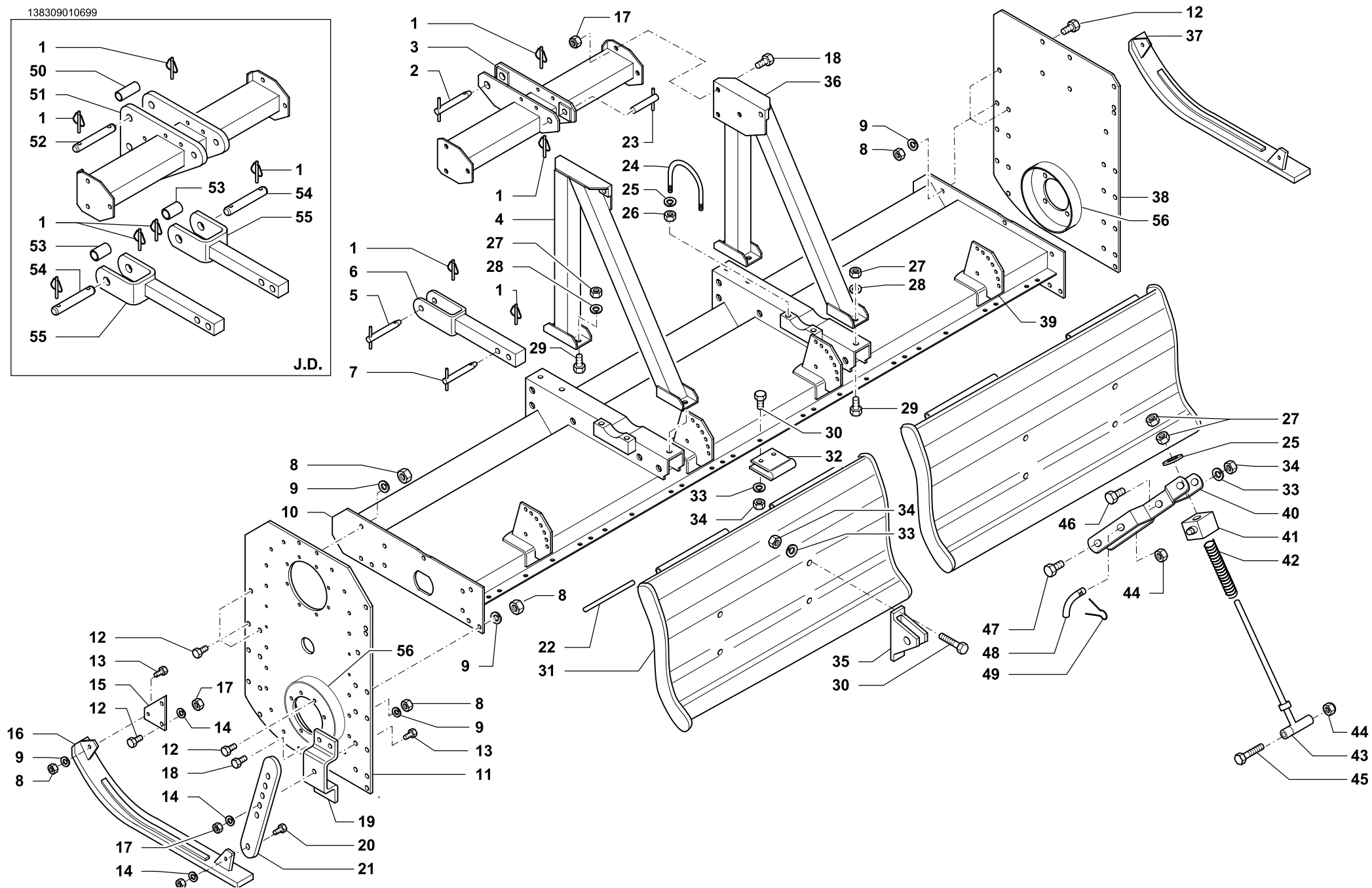
01

0205

RIF.	N. CODICE	DENOMINAZIONE	DENOMINATION	BEZEICHNUNG	DENOMINATION
49	661408	Piastra (P.D.F posteriore)	Plate	Plate	Platte
50	323644	Distanziale (P.D.F posteriore)	Spacer	Distanzstueck	Entretoise
51	014278	Vite	Screw	Schraube	Vis
52	004004	Dado	Nut	Mutter	Ecrou
53	011004	Grower	Grower	Federscheibe	Grower
54	014004	Vite	Screw	Schraube	Vis
205	55	461802	Supporto scatola L=938	Halterung	Support boite de vitesse
230		461803	Supporto scatola L=1063	Halterung	Support boite de vitesse
255		461804	Supporto scatola L=1088	Halterung	Support boite de vitesse
280		461805	Supporto scatola L=1313	Halterung	Support boite de vitesse
305		461806	Supporto scatola L=1438	Halterung	Support boite de vitesse
330		461807	Supporto scatola L=1563	Halterung	Support boite de vitesse
56	421600	Scatola cambio	Housing	Gehäuse	Bôte
57	022086	Rondella	Washer	Unterlegscheibe	Rondelle
58	099140	Cuffia	Guard	Schütz	Protection
59	422617	Ingranaggio Z18	Gear	Zanhrad	Engrenage
60	161500	Supporto porta cuffia	Supporti	Halterung	Support



J.D.



**GRUPPO TELAIO (VERSIONE CON PATTINI) ≠ FRAME GROUP (VERSION WITH SKIDS)
 RAHMENSGRUPPE (VERSION KUFEN) ≠ GROUPE CHASSIS (VERSION PATINS)**

Tav.
Tab.
Taf. **138309**

Rev. **01 0699**



GRUPPO TELAIO (VERSIONE CON PATTINI) • FRAME GROUP (VERSION WITH SKIDS)
RAHMENSGRUPPE (VERSION KUFEN) • GROUPE CHASSIS (VERSION PATINS)

Tav.
Tab.
Taf.

138309

Rev.

01

0699

RIF.	N. CODICE	DENOMINAZIONE	DENOMINATION	BEZEICHNUNG	DENOMINATION
1	013011	Spina	Pin	Stift	Goupille
	013039	Spina	Pin	Stift	Goupille
2	423719	Perno	Pivot	Bolzen	Axe
3	461878	Traversa	Cross piece	Querbalken	Traverse
4	461877	Montante sinistro	Left pillar	Links Stander	Montant gauche
5	423718	Perno	Pivot	Bolzen	Axe
6	461875	Braccio	Arm	Arm	Bras
7	423720	Perno	Pivot	Bolzen	Axe
8	004004	Dado	Nut	Mutter	Ecrou
9	011004	Grower	Grower	Federscheibe	Grower
205	461852	Telaio	Frame	Rahmen	Chassis
230	461853	Telaio	Frame	Rahmen	Chassis
255	461854	Telaio	Frame	Rahmen	Chassis
280	461855	Telaio	Frame	Rahmen	Chassis
305	461856	Telaio	Frame	Rahmen	Chassis
330	461857	Telaio	Frame	Rahmen	Chassis
11	461871	Laterale sinistro	L.H. side shield	L.H. seitlicher schild	Joue gauche
12	014004	Vite	Screw	Schraube	Vis
13	014019	Vite	Screw	Schraube	Vis
14	010002	Rondella	Washer	Unterlegscheibe	Rondelle
15	423360	Piastra attacco	Plate	Plate	Platte
16	461023	Pattino sinistro	L.H. skid	Kufe	Patin gauche
17	004054	Dado	Nut	Mutter	Ecrou
18	014011	Vite	Screw	Schraube	Vis
19	423361	Supporto	Support	Halterung	Support
20	014082	Vite	Screw	Schraube	Vis
21	423363	Asta regolazione	Rod	Stange	Tige
205	423732	Perno cerniera ventola	Pivot	Bolzen	Axe
230	423733	Perno cerniera ventola	Pivot	Bolzen	Axe
255	423734	Perno cerniera ventola	Pivot	Bolzen	Axe
280	423735	Perno cerniera ventola	Pivot	Bolzen	Axe
305	423736	Perno cerniera ventola	Pivot	Bolzen	Axe
330	423737	Perno cerniera ventola	Pivot	Bolzen	Axe
23	423743	Perno	Pivot	Bolzen	Axe



GRUPPO TELAIO (VERSIONE CON PATTINI) • FRAME GROUP (VERSION WITH SKIDS)
RAHMENSGRUPPE (VERSION KUFEN) • GROUPE CHASSIS (VERSION PATINS)

Tav.
Tab.
Taf.

138309

Rev.

01

0699

RIF.	N. CODICE	DENOMINAZIONE	DENOMINATION	BEZEICHNUNG	DENOMINATION
24	423726	Cavallotto	U bolt	Bügelbolzen	Crampillon
25	011005	Grower	Grower	Federscheibe	Grower
26	004063	Dado	Nut	Mutter	Ecrou
27	004035	Dado	Nut	Mutter	Ecrou
28	011005	Grower	Grower	Federscheibe	Grower
29	014085	Vite	Screw	Schraube	Vis
30	014145	Vite	Screw	Schraube	Vis
205	31	461002	Scudo mobile sinistro	L.H. bodenklappe	Tablier arriere gauche
205		461012	Scudo mobile destro	R.H. bodenklappe	Tablier arriere droite
230		461003	Scudo mobile sinistro	L.H. bodenklappe	Tablier arriere gauche
230		461013	Scudo mobile destro	R.H. bodenklappe	Tablier arriere droite
255		461004	Scudo mobile sinistro	L.H. bodenklappe	Tablier arriere gauche
255		461014	Scudo mobile destro	R.H. bodenklappe	Tablier arriere droite
280		461005	Scudo mobile sinistro	L.H. bodenklappe	Tablier arriere gauche
280		461015	Scudo mobile destro	R.H. bodenklappe	Tablier arriere droite
305		461006	Scudo mobile sinistro	L.H. bodenklappe	Tablier arriere gauche
305		461016	Scudo mobile destro	R.H. bodenklappe	Tablier arriere droite
330		461007	Scudo mobile sinistro	L.H. bodenklappe	Tablier arriere gauche
330		461017	Scudo mobile destro	R.H. bodenklappe	Tablier arriere droite
32	411604	Cerniera	Hinge	Scharnier	Charniere
33	011003	Grower	Grower	Federscheibe	Grower
34	004030	Dado	Nut	Mutter	Ecrou
35	411524	Cerniera ventola	Hinge	Scharnier	Charniere
36	461876	Montante destro	Right pillar	Rechts Stander	Montant droit
37	461022	Pattino destro	R.H skid	Rechte kufe	Patin droite
38	461872	Laterale destro	R.H. panel	Seitenblech	Lateral droite
39	461704	Supporto (da saldare)	Support (to be welded)	Halterung (zum schweissen)	Support (à souder)
40	412596	Braccio	Arm	Arm	Bras
41	423560	Supporto	Support	Halterung	Support
42	423557	Molla	Spring	Feder	Ressort
43	422529	Asta regolazione	Adjusting bar	Einstellungstange	Guide de reglage
44	004079	Dado	Nut	Mutter	Ecrou
45	014257	Vite	Screw	Schraube	Vis
46	014213	Vite	Screw	Schraube	Vis



GRUPPO TELAIO (VERSIONE CON PATTINI) • FRAME GROUP (VERSION WITH SKIDS)
RAHMENSGRUPPE (VERSION KUFEN) • GROUPE CHASSIS (VERSION PATINS)

Tav.
Tab.
Taf.

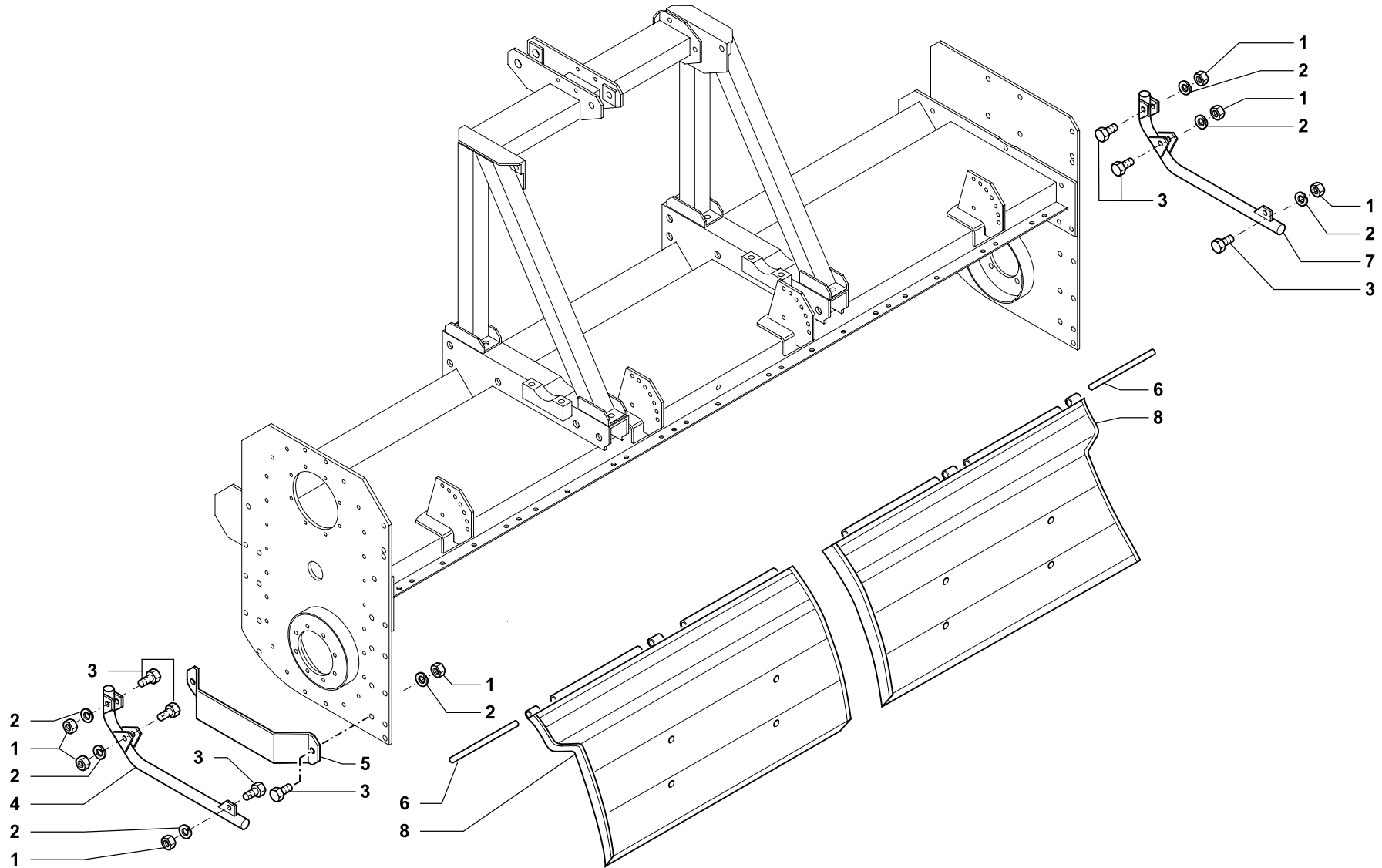
138309

Rev.

01

0699

RIF.	N. CODICE	DENOMINAZIONE	DENOMINATION	BEZEICHNUNG	DENOMINATION
47	014229	Vite	Screw	Schraube	Vis
48	423558	Perno	Pivot	Bolzen	Axe
49	002014	Copiglia	Split Pin	Splint	Goupille
50	621726	Boccola	Bush	Buchse	Bague
51	461405	Traversa	Cross piece	Querbalken	Traverse
52	621723	Perno	Pivot	Bolzen	Axe
53	621727	Boccola	Bush	Buchse	Bague
54	621724	Perno	Pivot	Bolzen	Axe
55	761712	Braccio	Arm	Arm	Bras
56	423340	Anello raschiaerba (da saldare)	Dust cover (to be welded)	Halterung (zum schweissen)	Parapoussiere (a' souder)



GRUPPO TELAIO (VERSIONE CON RUOTE) • FRAME GROUP (VERSION WITH WHEELS)
RAHMENSGRUPPE (VERSION RÄDERN) • GROUPE CHASSIS (VERSION ROUES)

Tav.
Tab.
Taf. **138310**

Rev. **00 0699**



GRUPPO TELAIO (VERSIONE CON RUOTE) • FRAME GROUP (VERSION WITH WHEELS)
RAHMENSGRUPPE (VERSION RÄDERN) • GROUPE CHASSIS (VERSION ROUES)

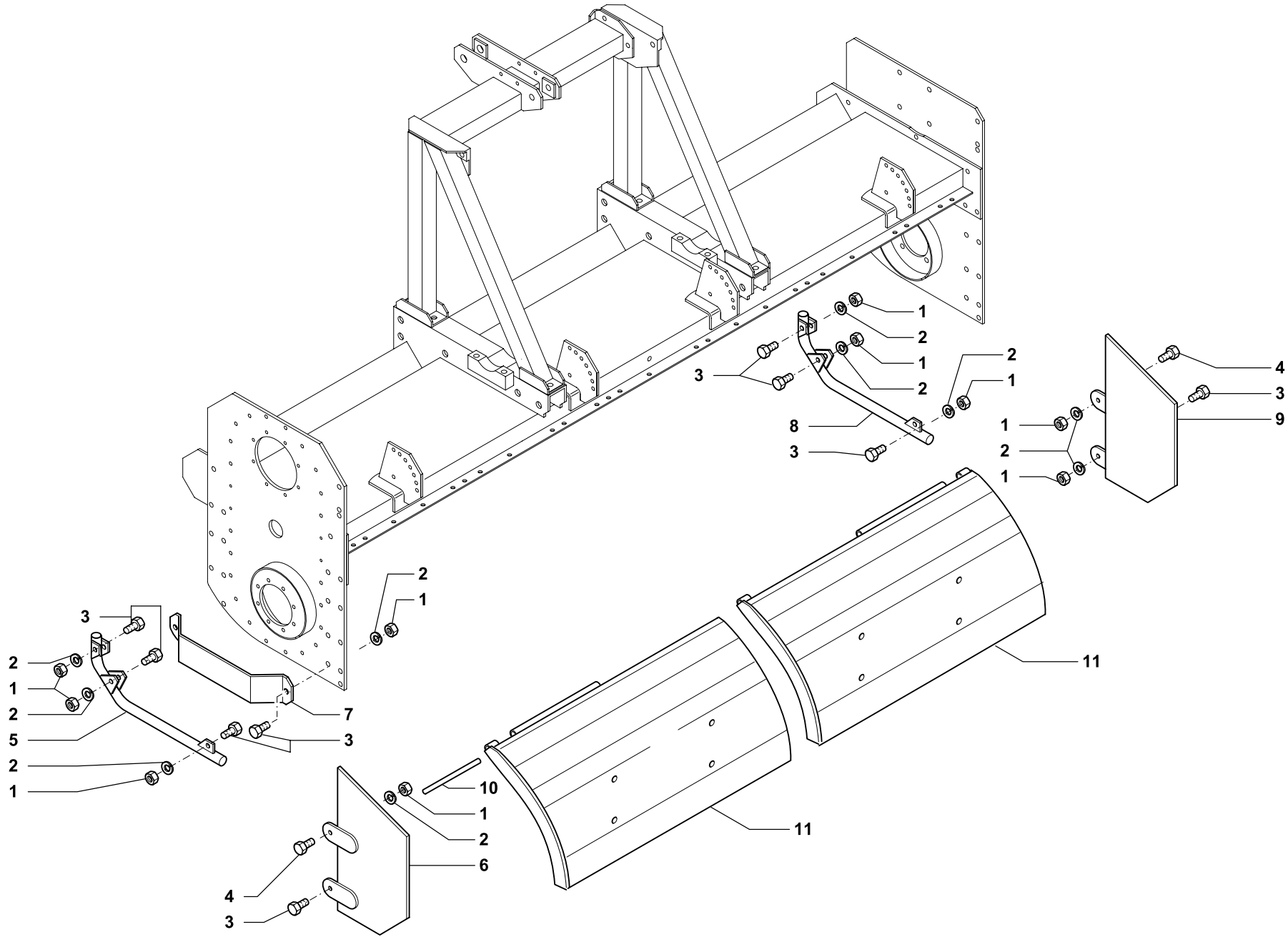
Tav.
Tab.
Taf.

138310

Rev.

00 0699

RIF.	N. CODICE	DENOMINAZIONE	DENOMINATION	BEZEICHNUNG	DENOMINATION
1	004004	Dado	Nut	Mutter	Ecrou
	004054	Dado k	Nut	Mutter	Ecrou
2	011004	Grower	Grower	Federscheibe	Grower
	010002	Rondella k	Washer	Unterlegscheibe	Rondelle
3	014004	Vite	Screw	Schraube	Vis
	014011	Vite	Screw	Schraube	Vis
4	961518	Protezione sinistra	Protection	Schutz	Protection
5	423722	Protezione carter	Protection	Schutz	Protection
205	6	423732	Perno cerniera ventola	Bolzen	Axe
230		423733	Perno cerniera ventola	Bolzen	Axe
255		423734	Perno cerniera ventola	Bolzen	Axe
280		423735	Perno cerniera ventola	Bolzen	Axe
305		423736	Perno cerniera ventola	Bolzen	Axe
330		423737	Perno cerniera ventola	Bolzen	Axe
7	961517	Protezione destra	Protection	Schutz	Protection
205	8	761750	Scudo mobile sinistro	L.H. bodenklappe	Tablier arriere gauche
205		761760	Scudo mobile destro	R.H. bodenklappe	Tablier arriere droite
230		761751	Scudo mobile sinistro	L.H. bodenklappe	Tablier arriere gauche
230		761761	Scudo mobile destro	R.H. bodenklappe	Tablier arriere droite
255		761752	Scudo mobile sinistro	L.H. bodenklappe	Tablier arriere gauche
255		761762	Scudo mobile destro	R.H. bodenklappe	Tablier arriere droite
280		761753	Scudo mobile sinistro	L.H. bodenklappe	Tablier arriere gauche
280		761763	Scudo mobile destro	R.H. bodenklappe	Tablier arriere droite
305		761754	Scudo mobile sinistro	L.H. bodenklappe	Tablier arriere gauche
305		761764	Scudo mobile destro	R.H. bodenklappe	Tablier arriere droite
330		761755	Scudo mobile sinistro	L.H. bodenklappe	Tablier arriere gauche
330		761765	Scudo mobile destro	R.H. bodenklappe	Tablier arriere droite

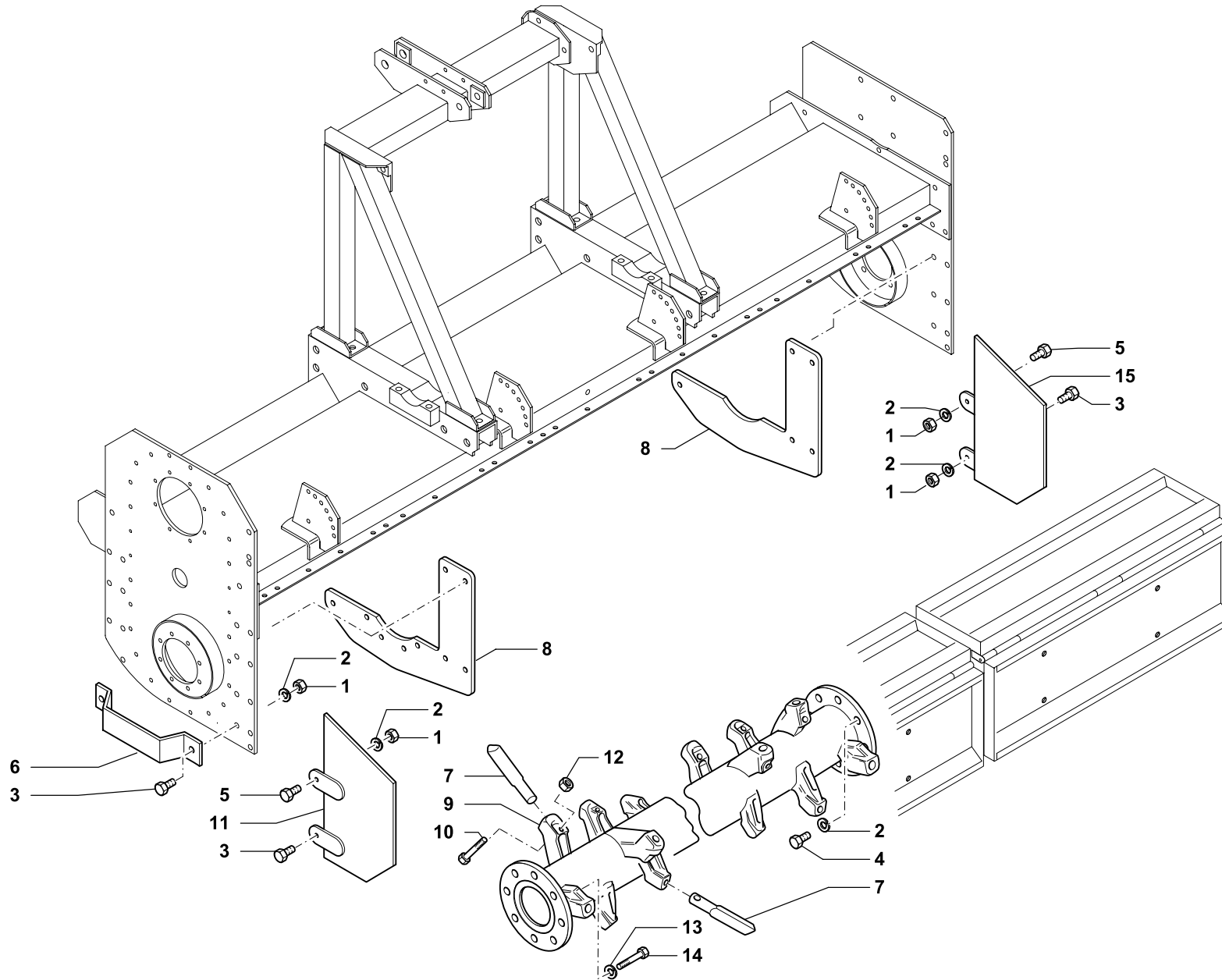


GRUPPO TELAIO (VERSIONE CON RULLO) • FRAME GROUP (VERSION WITH ROLLER)
RAHMENSGRUPPE (VERSION WALZE) • GROUPE CHASSIS (VERSION ROULEAU)

Tav. Tab. Taf.	138311	Rev.	00 0699
----------------------	---------------	------	----------------



RIF.	N. CODICE	DENOMINAZIONE	DENOMINATION	BEZEICHNUNG	DENOMINATION	
1	004004	Dado	Nut	Mutter	Ecrou	
2	011004	Grower	Grower	Federscheibe	Grower	
3	014004	Vite	Screw	Schraube	Vis	
4	014019	Vite	Screw	Schraube	Vis	
5	961518	Protezione sinistra	L.H. side protection	Links Schuetz	Protection guache	
6	461027	Laterale parazole sinistro	L.H. side clod bumper	Links Erdklumpenschutz	Pare-mottes guache	
7	423722	Protezione carter	Protection	Schuetz	Protection	
8	961517	Protezione destra	R.H. side protection	Schuetz Rechts	Protection droite	
9	461026	Laterale parazole destro	R.H. side clod bumper	Erdklumpenschutz Rechts	Pare-mottes droite	
205	10	423732	Perno cerniera ventola	Pivot	Bolzen	Axe
230		423733	Perno cerniera ventola	Pivot	Bolzen	Axe
255		423734	Perno cerniera ventola	Pivot	Bolzen	Axe
280		423735	Perno cerniera ventola	Pivot	Bolzen	Axe
305		423736	Perno cerniera ventola	Pivot	Bolzen	Axe
330		423737	Perno cerniera ventola	Pivot	Bolzen	Axe
205	11	461862	Scudo mobile rullo	Rear shield	Bodenklappe	Tablier arrier
230		461863	Scudo mobile rullo	Rear shield	Bodenklappe	Tablier arrier
255		461864	Scudo mobile rullo	Rear shield	Bodenklappe	Tablier arrier
280		461865	Scudo mobile rullo	Rear shield	Bodenklappe	Tablier arrier
305		461866	Scudo mobile rullo	Rear shield	Bodenklappe	Tablier arrier
330		461867	Scudo mobile rullo	Rear shield	Bodenklappe	Tablier arrier

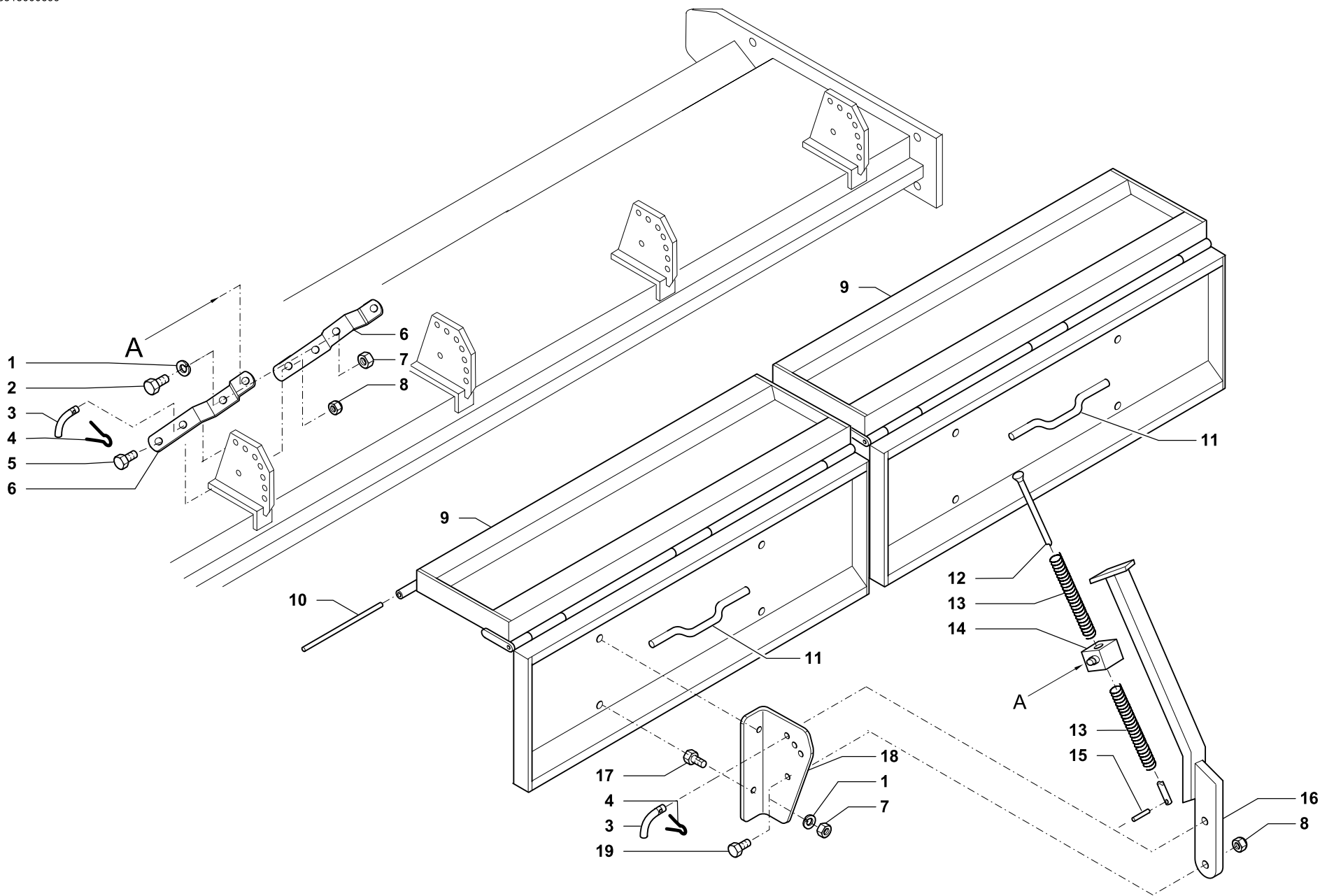


**GRUPPO TELAIO (VERSIONE FRANGOR) • FRAME GROUP (VERSION FRANGOR)
 RAHMENSGRUPPE (VERSION FRANGOR) • GROUPE CHASSIS (VERSION FRANGOR)**

Tav. Tab. Taf.	138312	Rev.	01 0699
----------------------	---------------	------	----------------



RIF.	N. CODICE	DENOMINAZIONE	DENOMINATION	BEZEICHNUNG	DENOMINATION
1	004004	Dado	Nut	Mutter	Ecrou
2	011004	Grower	Grower	Federscheibe	Grower
3	014004	Vite	Screw	Schraube	Vis
4	014011	Vite	Screw	Schraube	Vis
5	014019	Vite	Screw	Schraube	Vis
6	423722	Protezione carter	Protection	Schutz	Protection
7	422538	Dente	Tine	Zahn	Dent
8	412806	Piastra	Plate	Plate	Platte
205	9 461052	Rotore denti	TineRotor	ZinkenRotor	Rotor a dents
230	461053	Rotore denti	TineRotor	ZinkenRotor	Rotor a dents
255	461054	Rotore denti	TineRotor	ZinkenRotor	Rotor a dents
280	461055	Rotore denti	TineRotor	ZinkenRotor	Rotor a dents
305	461056	Rotore denti	TineRotor	ZinkenRotor	Rotor a dents
330	461057	Rotore denti	TineRotor	ZinkenRotor	Rotor a dents
10	014311	Vite	Screw	Schraube	Vis
11	461027	Laterale parazolle sinistro	L.H.S. Clod bumper	Erdklumpenschutz	Pare-mottes
12	004084	Dado	Nut	Mutter	Ecrou
13	011005	Grower	Grower	Federscheibe	Grower
14	014087	Vite	Screw	Schraube	Vis
15	461026	Laterale parazolle destro	R.H. clod bumper	Erdklumpenschutz	Pare-mottesp



SCUDO MOBILE • REAR SHIELD
 BODENKLAPPE • TABLIER ARRIERE

Tav. Tab. Taf.	138313	Rev.	00 0699
----------------------	---------------	------	----------------



SCUDO MOBILE • REAR SHIELD
BODENKLAPPE • TABLIER ARRIERE

Tav.
Tab.
Taf.

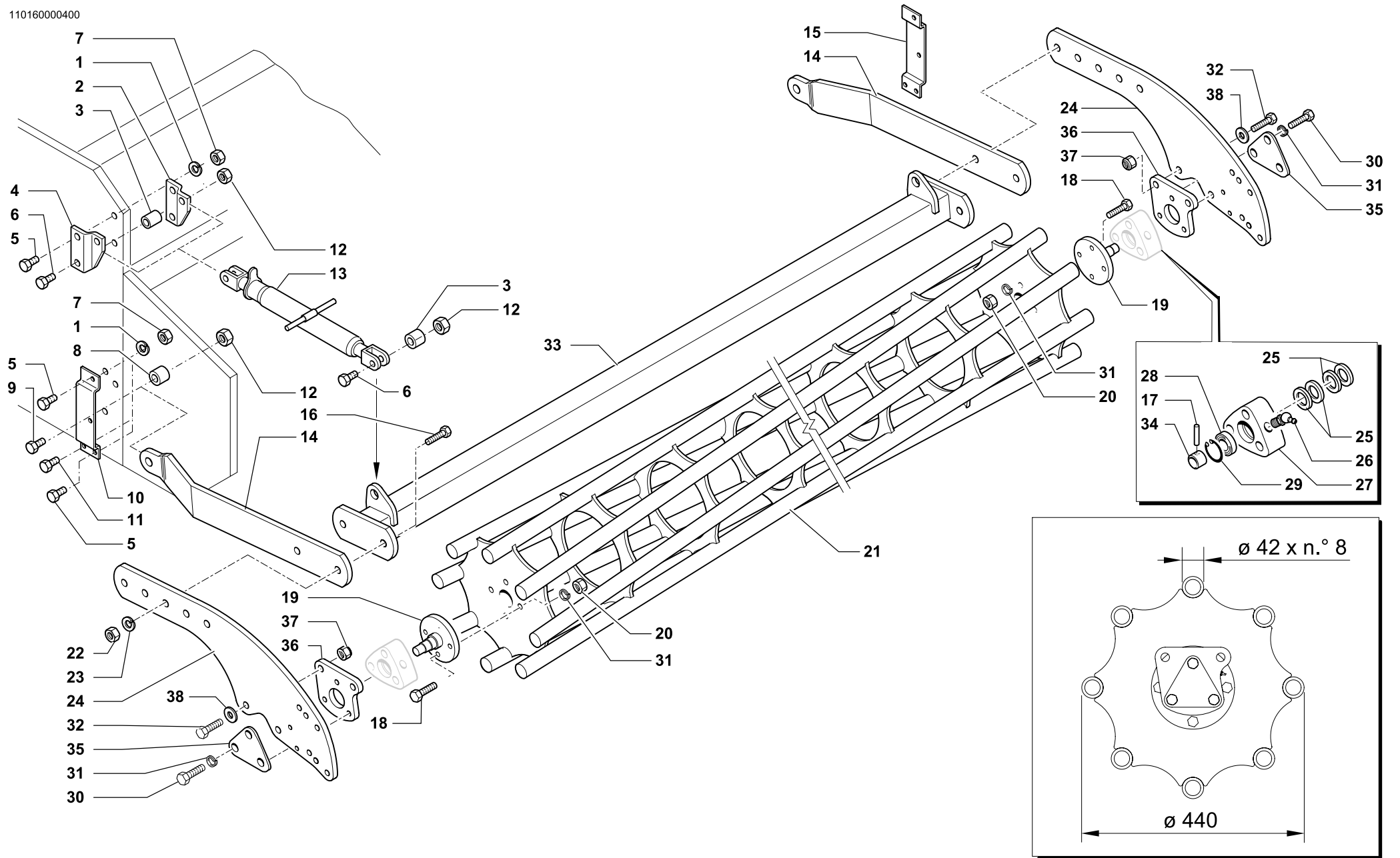
138313

Rev.

00 0699

RIF.	N. CODICE	DENOMINAZIONE	DENOMINATION	BEZEICHNUNG	DENOMINATION	
1	011003	Grower	Grower	Federscheibe	Grower	
2	014213	Vite	Screw	Schraube	Vis	
3	423558	Perno	Pivot	Bolzen	Axe	
4	002014	Copiglia	Split pin	Hohlstift	Goupille	
5	014229	Vite	Screw	Schraube	Vis	
6	412596	Braccio	Arm	Arm	Bras	
7	004030	Dado	Nut	Mutter	Ecrou	
8	004079	Dado	Nut	Mutter	Ecrou	
205	9	461912	Scudo mobile	Rear shield	Bodenklappe	Tablier arriere
230		461913	Scudo mobile	Rear shield	Bodenklappe	Tablier arriere
255		461914	Scudo mobile	Rear shield	Bodenklappe	Tablier arriere
280		461915	Scudo mobile	Rear shield	Bodenklappe	Tablier arriere
305		461916	Scudo mobile	Rear shield	Bodenklappe	Tablier arriere
330		461917	Scudo mobile	Rear shield	Bodenklappe	Tablier arriere
205	10	423732	Perno cerniera ventola	Pivot	Bolzen	Axe
230		423733	Perno cerniera ventola	Pivot	Bolzen	Axe
255		423734	Perno cerniera ventola	Pivot	Bolzen	Axe
280		423735	Perno cerniera ventola	Pivot	Bolzen	Axe
305		423736	Perno cerniera ventola	Pivot	Bolzen	Axe
330		423737	Perno cerniera ventola	Pivot	Bolzen	Axe
11	423483	Maniglia (da saldare)	Handle (to be welded)	Handgriff (zum schweissen)	Poignee levage (a souder)	
12	423740	Perno	Pivot	Bolzen	Axe	
13	423557	Molla	Spring	Feder	Ressort	
14	423560	Supporto	Support	Halterung	Support	
15	013003	Spina elastica	Pin	Stift	Goupille	
16	461893	Asta	Rod	Stange	Tige	
17	014145	Vite	Screw	Schraube	Vis	
18	412751	Supporto	Support	Halterung	Support	
19	014215	Vite	Screw	Schraube	Vis	

110160000400



RULLO GABBIA $\varnothing 440$ • CAGE ROLLER $\varnothing 440$
 KÄFIGWALZE $\varnothing 440$ • ROULEAU CAGE $\varnothing 440$

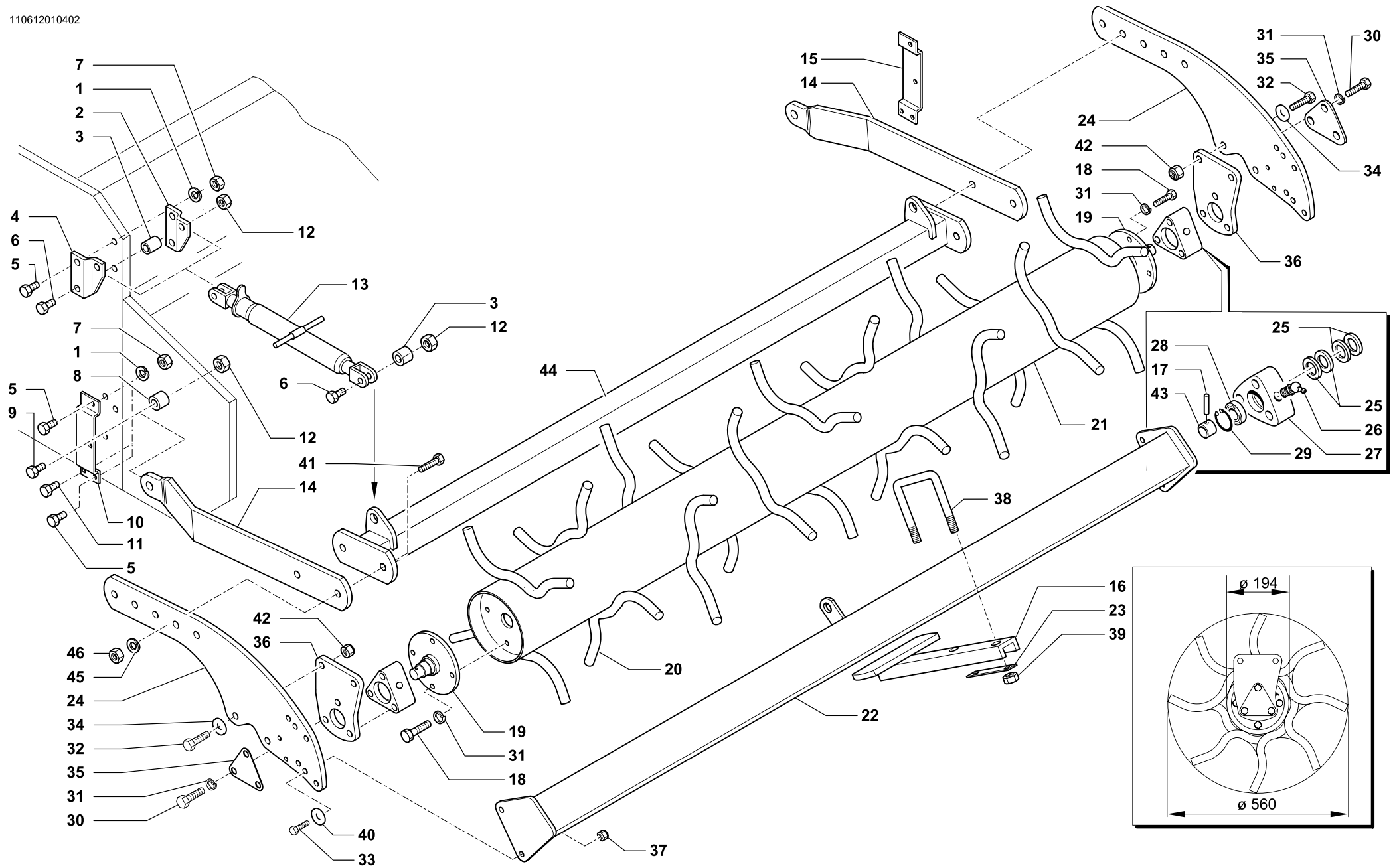
Tav. Tab. Taf.	138633	Rev.	00 0900
----------------------	---------------	------	----------------



RIF.	N. CODICE	DENOMINAZIONE	DENOMINATION	BEZEICHNUNG	DENOMINATION
1	011004	Grower	Grower	Federscheibe	Grower
2	411528	Piastra	Plate	Plate	Platte
3	423764	Distanziale	Spacer	Distanzstueck	Entretoise
4	411529	Piastra	Plate	Plate	Platte
5	014019	Vite	Screw	Schraube	Vis
6	014176	Vite	Screw	Schraube	Vis
7	004004	Dado	Nut	Mutter	Ecrou
8	423566	Boccola	Bush	Buchse	Bague
9	014035	Vite	Screw	Schraube	Vis
10	423725	Taschetta rullo sinistra	L.H. Attach. arm fulcrum lug	Links Befestigungsarm	Fixation de bras gauche
11	014004	Vite	Screw	Schraube	Vis
12	004054	Dado	Nut	Mutter	Ecrou
13	971548	Tirante	Linkage	Zugbolzen	Tirant
14	911606	Semibraccio anteriore	Arm	Arm	Bras
15	423724	Taschetta rullo destra	R.H. Attach. arm fulcrum lug	Rechts Befestigungsarm	Fixation de bras droit
16	014355	Vite	Screw	Schraube	Vis
17	013019	Spina	Pin	Stift	Goupille
18	014254	Vite	Screw	Schraube	Vis
19	661401	Fusello	Stub axle	Flansch	Fusee
20	004030	Dado	Nut	Mutter	Ecrou
230	21	961962	Rullo gabbia	Käfigwalze	Rouleau cage
255		961963	Rullo gabbia	Käfigwalze	Rouleau cage
280		961964	Rullo gabbia	Käfigwalze	Rouleau cage
305		961965	Rullo gabbia	Käfigwalze	Rouleau cage
330		961966	Rullo gabbia	Käfigwalze	Rouleau cage
22	004065	Dado	Nut	Mutter	Ecrou
23	011017	Grower	Grower	Federscheibe	Grower
24	911605	Braccio posteriore	Arm	Arm	Bras
25	099018	Gruppo parapolvere	Dust cover	Staubdeckel	Cache anti poussière
26	008005	Ingrassatore	Grease nipple	Fettbuechse	Graisser
27	421604	Supporto	Support	Halterung	Support
28	003051	Cuscinetto	Bearing	Kugellager	Roulement
29	001006	Anello di arresto	Stop ring	Sperring	Bague d'arret



RIF.	N. CODICE	DENOMINAZIONE	DENOMINATION	BEZEICHNUNG	DENOMINATION	
30	014145	Vite	Screw	Schraube	Vis	
31	011003	Grower	Grower	Federscheibe	Grower	
32	014192	Vite	Screw	Schraube	Vis	
230	33	961902	Barra collegamento bracci rullo	Bar	Stab	Barre
255		961903	Barra collegamento bracci rullo	Bar	Stab	Barre
280		961904	Barra collegamento bracci rullo	Bar	Stab	Barre
305		961905	Barra collegamento bracci rullo	Bar	Stab	Barre
330		961906	Barra collegamento bracci rullo	Bar	Stab	Barre
34	661403	Bussola	Bush	Buchse	Bague	
35	612372	Chiusura	Plate	Plate	Platte	
36	661402	Piastra	Plate	Plate	Platte	
37	004072	Dado	Nut	Mutter	Ecrou	
38	010006	Rondella	Washer	Unterlegscheibe	Rondelle	



RULLO SPUNTONI Ø 560 • SPIKES ROLLER Ø 560
 STACHELWALZE Ø 560 • ROULEAU POINTES Ø 560

Tav. Tab. Taf.	138636	Rev.	01 0902
----------------------	---------------	------	----------------



RULLO SPUNTONI Ø 560 • SPIKES ROLLER Ø 560
STACHELWALZE Ø 560 • ROULEAU POINTES Ø 560

Tav.
Tab.
Taf.

138636

Rev.

01 0902

RIF.	N. CODICE	DENOMINAZIONE	DENOMINATION	BEZEICHNUNG	DENOMINATION
1	011004	Grower	Grower	Federscheibe	Grower
2	411528	Piastra	Plate	Plate	Platte
3	423764	Distanziale	Spacer	Distanzstueck	Entretoise
4	411529	Piastra	Plate	Plate	Platte
5	014019	Vite	Screw	Schraube	Vis
6	014176	Vite	Screw	Schraube	Vis
7	004004	Dado	Nut	Mutter	Ecrou
8	423566	Boccola	Bush	Buchse	Bague
9	014035	Vite	Screw	Schraube	Vis
10	423725	Taschetta rullo sinistra	L.H. Attach. arm fulcrum lug	Links Befestigungsarm	Fixation de bras gauche
11	014004	Vite	Screw	Schraube	Vis
12	004054	Dado	Nut	Mutter	Ecrou
13	971548	Tirante	Linkage	Zugbolzen	Tirant
14	911606	Semibraccio anteriore	Arm	Arm	Bras
15	423724	Taschetta rullo destra	R.H. Attach. arm fulcrum lug	Rechts Befestigungsarm	Fixation de bras droit
16	961818	Raschietto	Scraper	Schaber	Racloir
17	013019	Spina	Pin	Stift	Goupille
18	014145	Vite	Screw	Schraube	Vis
19	661401	Fusello	Stub axle	Flansch	Fusee
20	913704	Spuntone doppio (da saldare)	Tine (to be welded)	Zahn (zum schweissen)	Dent (à souder)
230	21	961992	Rullo spuntoni	Spikes roller	Rouleau pointes
255		961993	Rullo spuntoni	Spikes roller	Rouleau pointes
280		961994	Rullo spuntoni	Spikes roller	Rouleau pointes
305		961995	Rullo spuntoni	Spikes roller	Rouleau pointes
330		961996	Rullo spuntoni	Spikes roller	Rouleau pointes
230	22	961852	Barra porta raschietti	Scratcher support	Porte-racloir
255		961853	Barra porta raschietti	Scratcher support	Porte-racloir
280		961854	Barra porta raschietti	Scratcher support	Porte-racloir
305		961855	Barra porta raschietti	Scratcher support	Porte-racloir
330		961856	Barra porta raschietti	Scratcher support	Porte-racloir
	23	911602	Piatto	Plate	Plate
	24	911605	Braccio	Arm	Bras
	25	099018	Gruppo parapolvere	Dust cover	Cache anti poussière



RULLO SPUNTONI Ø 560 • SPIKES ROLLER Ø 560
STACHELWALZE Ø 560 • ROULEAU POINTES Ø 560

Tav.
Tab.
Taf.

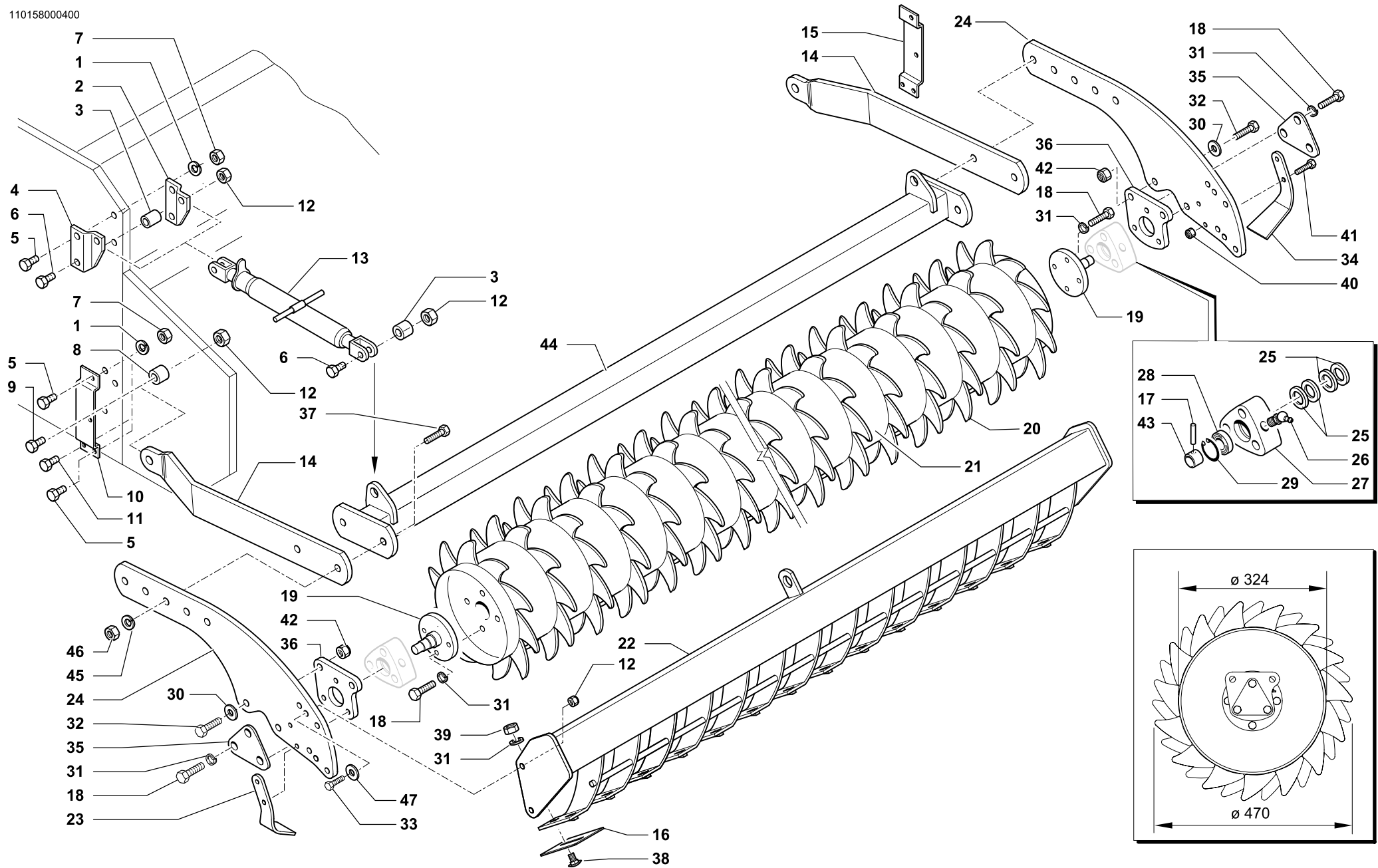
138636

Rev.

01 0902

RIF.	N. CODICE	DENOMINAZIONE	DENOMINATION	BEZEICHNUNG	DENOMINATION
26	008005	Ingrassatore	Grease nipple	Fettbuechse	Graisneur
27	421604	Supporto	Support	Halterung	Support
28	003051	Cuscinetto	Bearing	Kugellager	Roulement
29	001006	Anello di arresto	Stop ring	Sperring	Bague d'arret
30	014145	Vite	Screw	Schraube	Vis
31	011003	Grower	Grower	Federscheibe	Grower
32	014192	Vite	Screw	Schraube	Vis
33	014082	Vite	Screw	Schraube	Vis
34	010006	Rondella	Washer	Unterlegscheibe	Rondelle
35	612372	Chiusura	Plate	Plate	Platte
36	661406	Piastra	Plate	Plate	Platte
37	004054	Dado	Nut	Mutter	Ecrou
38	623750	Cavallotto	U bolt	Bügelbolzen	Crampillon
39	004101	Dado	Nut	Mutter	Ecrou
40	010002	Rondella	Washer	Unterlegscheibe	Rondelle
41	014355	Vite	Screw	Schraube	Vis
42	004072	Dado	Nut	Mutter	Ecrou
43	661403	Bussola	Bush	Buchse	Bague
230	44	961902	Barra collegamento bracci rullo	Stab	Barre
255		961903	Barra collegamento bracci rullo	Stab	Barre
280		961904	Barra collegamento bracci rullo	Stab	Barre
305		961905	Barra collegamento bracci rullo	Stab	Barre
330		961906	Barra collegamento bracci rullo	Stab	Barre
45	011017	Grower	Grower	Federscheibe	Grower
46	004065	Dado	Nut	Mutter	Ecrou

110158000400



RULLO PACKER Ø 324 • PACKER ROLLER Ø 324
PACKERWALZE Ø 324 • ROULEAU PACKER Ø 324

Tav. Tab. Taf.	138634	Rev.	00 0900
----------------------	---------------	------	----------------



RULLO PACKER Ø 324 • PACKER ROLLER Ø 324
PACKERWALZE Ø 324 • ROULEAU PACKER Ø 324

Tav.
Tab.
Taf.

138634

Rev.

00

0900

RIF.	N. CODICE	DENOMINAZIONE	DENOMINATION	BEZEICHNUNG	DENOMINATION
1	011004	Grower	Grower	Federscheibe	Grower
2	411528	Piastra	Plate	Plate	Platte
3	423764	Distanziale	Spacer	Distanzstueck	Entretoise
4	411529	Piastra	Plate	Plate	Platte
5	014019	Vite	Screw	Schraube	Vis
6	014176	Vite	Screw	Schraube	Vis
7	004004	Dado	Nut	Mutter	Ecrou
8	423566	Boccola	Bush	Buchse	Bague
9	014035	Vite	Screw	Schraube	Vis
10	423725	Taschetta rullo sinistra	L.H. Attach. arm fulcrum lug	Links Befestigungsarm	Fixation de bras gauche
11	014004	Vite	Screw	Schraube	Vis
12	004054	Dado	Nut	Mutter	Ecrou
13	971548	Tirante	Linkage	Zugbolzen	Tirant
14	911606	Semibraccio anteriore	Arm	Arm	Bras
15	423724	Taschetta rullo destra	R.H. Attach. arm fulcrum lug	Rechts Befestigungsarm	Fixation de bras droit
16	911601	Raschietto	Scraper	Schaber	Racloir
17	013019	Spina	Pin	Stift	Goupille
18	014145	Vite	Screw	Schraube	Vis
19	661401	Fusello	Stub axle	Flansch	Fusee
20	412782	Dente (da saldare)	Tine (to be welded)	Zahn (zum schweissen)	Dent (à souder)
230	21	961932	Rullo packer	Packer roller	Rouleau packer
255		961933	Rullo packer	Packer roller	Rouleau packer
280		961934	Rullo packer	Packer roller	Rouleau packer
305		961935	Rullo packer	Packer roller	Rouleau packer
330		961936	Rullo packer	Packer roller	Rouleau packer
230	22	961912	Barra porta raschietti	Scratcher support	Porte-racloir
255		961913	Barra porta raschietti	Scratcher support	Porte-racloir
280		961914	Barra porta raschietti	Scratcher support	Porte-racloir
305		961915	Barra porta raschietti	Scratcher support	Porte-racloir
330		961916	Barra porta raschietti	Scratcher support	Porte-racloir
	23	911627	Raschietto laterale SX	Scraper	Racloir
	24	911605	Braccio	Arm	Bras
	25	099018	Gruppo parapolvere	Dust cover	Cache anti poussière



RULLO PACKER Ø 324 • PACKER ROLLER Ø 324
PACKERWALZE Ø 324 • ROULEAU PACKER Ø 324

Tav.
Tab.
Taf.

138634

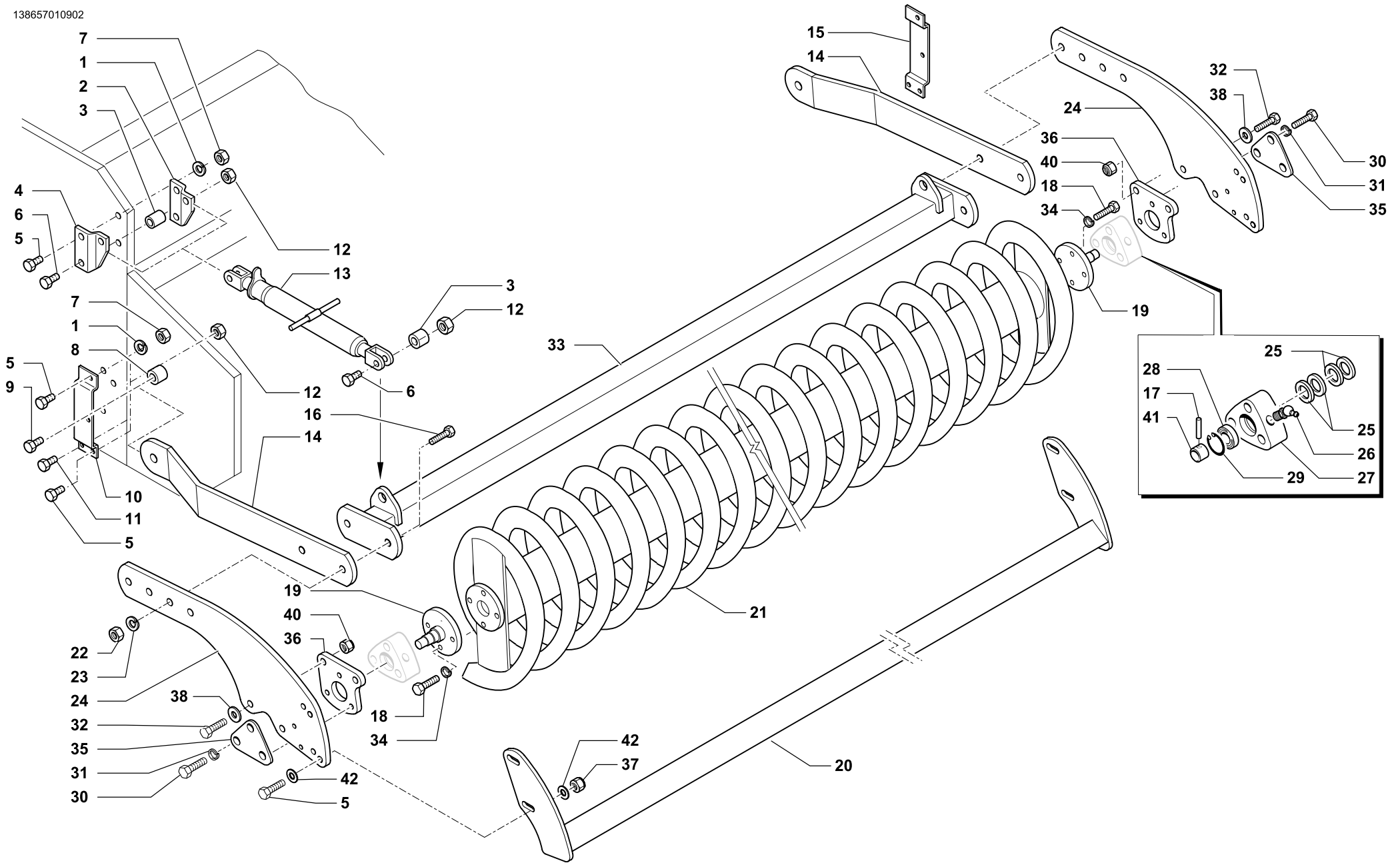
Rev.

00

0900

RIF.	N. CODICE	DENOMINAZIONE	DENOMINATION	BEZEICHNUNG	DENOMINATION
26	008005	Ingrassatore	Grease nipple	Fettbuechse	Graisneur
27	421604	Supporto	Support	Halterung	Support
28	003051	Cuscinetto	Bearing	Kugellager	Roulement
29	001006	Anello di arresto	Stop ring	Sperring	Bague d'arret
30	010006	Rondella	Washer	Unterlegscheibe	Rondelle
31	011003	Grower	Grower	Federscheibe	Grower
32	014192	Vite	Screw	Schraube	Vis
33	014019	Vite	Screw	Schraube	Vis
34	911628	Raschietto laterale DX	Scraper	Schaber	Racloir
35	612372	Chiusura	Plate	Plate	Platte
36	661402	Piastra	Plate	Plate	Platte
37	014355	Vite	Screw	Schraube	Vis
38	014386	Vite	Screw	Schraube	Vis
39	004003	Dado	Nut	Mutter	Ecrou
40	004084	Dado	Nut	Mutter	Ecrou
41	014214	Vite	Screw	Schraube	Vis
42	004072	Dado	Nut	Mutter	Ecrou
43	661403	Bussola	Bush	Buchse	Bague
230	44	961902	Barra collegamento bracci rullo	Stab	Barre
255		961903	Barra collegamento bracci rullo	Stab	Barre
280		961904	Barra collegamento bracci rullo	Stab	Barre
305		961905	Barra collegamento bracci rullo	Stab	Barre
330		961906	Barra collegamento bracci rullo	Stab	Barre
45	011017	Grower	Grower	Federscheibe	Grower
46	004065	Dado	Nut	Mutter	Ecrou
47	010002	Rondella	Washer	Unterlegscheibe	Rondelle

138657010902



RULLO SPIRALE Ø 470 • SPIRAL ROLLER Ø 470
SPIRAL WALZE Ø 470 • ROULEAU SPIRALE Ø 470

Tav. Tab. Taf.	138657	Rev.	01 0902
----------------------	---------------	------	----------------



RULLO SPIRALE Ø 470 • SPIRAL ROLLER Ø 470
SPIRAL WALZE Ø 470 • ROULEAU SPIRALE Ø 470

Tav.
Tab.
Taf.

138657

Rev.

01 0902

RIF.	N. CODICE	DENOMINAZIONE	DENOMINATION	BEZEICHNUNG	DENOMINATION
1	011004	Grower	Grower	Federscheibe	Grower
2	411528	Piastra	Plate	Plate	Platte
3	423764	Distanziale	Spacer	Distanzstueck	Entretoise
4	411529	Piastra	Plate	Plate	Platte
5	014019	Vite	Screw	Schraube	Vis
6	014176	Vite	Screw	Schraube	Vis
7	004004	Dado	Nut	Mutter	Ecrou
8	423566	Boccola	Bush	Buchse	Bague
9	014035	Vite	Screw	Schraube	Vis
10	423725	Taschetta rullo sinistro	Attach. arm fulcrum lug, LH	Befestigungsarm, Links	Fixation de bras gauche
11	014004	Vite	Screw	Schraube	Vis
12	004054	Dado	Nut	Mutter	Ecrou
13	971548	Tirante	Linkage	Zugbolzen	Tirant
14	911608	Semibraccio anteriore	Arm	Arm	Bras
15	423724	Taschetta rullo destro	Attach. arm fulcrum lug, RH	Befestigungsarm, Rechts	Fixation de bras droite
16	014221	Vite	Screw	Schraube	Vis
17	013019	Spina	Pin	Stift	Goupille
18	014145	Vite	Screw	Schraube	Vis
19	661401	Fusello	Stub axle	Flansch	Fusee
205	20	961821	Barra raschietto	Scratcher support	Porte-raclair
205	21	961981	Rullo spirale	Spiral roller	Rouleau spirale
22	004035	Dado	Nut	Mutter	Ecrou
23	011008	Grower	Grower	Federscheibe	Grower
24	911607	Braccio posteriore	Arm	Arm	Bras
25	099018	Gruppo parapolvere	Dust cover	Staubdeckel	Cache anti poussière
26	008005	Ingrassatore	Grease nipple	Fettbuechse	Graisser
27	421604	Supporto	Support	Halterung	Support
28	003051	Cuscinetto	Bearing	Kugellager	Roulement
29	001006	Anello di arresto	Stop ring	Sperring	Bague d'arret
30	014145	Vite	Screw	Schraube	Vis
31	011003	Grower	Grower	Federscheibe	Grower
32	014192	Vite	Screw	Schraube	Vis
205	33	961153	Barra collegamento bracci rullo	Bar	Barre



RULLO SPIRALE Ø 470 • SPIRAL ROLLER Ø 470
SPIRAL WALZE Ø 470 • ROULEAU SPIRALE Ø 470

Tav.
Tab.
Taf.

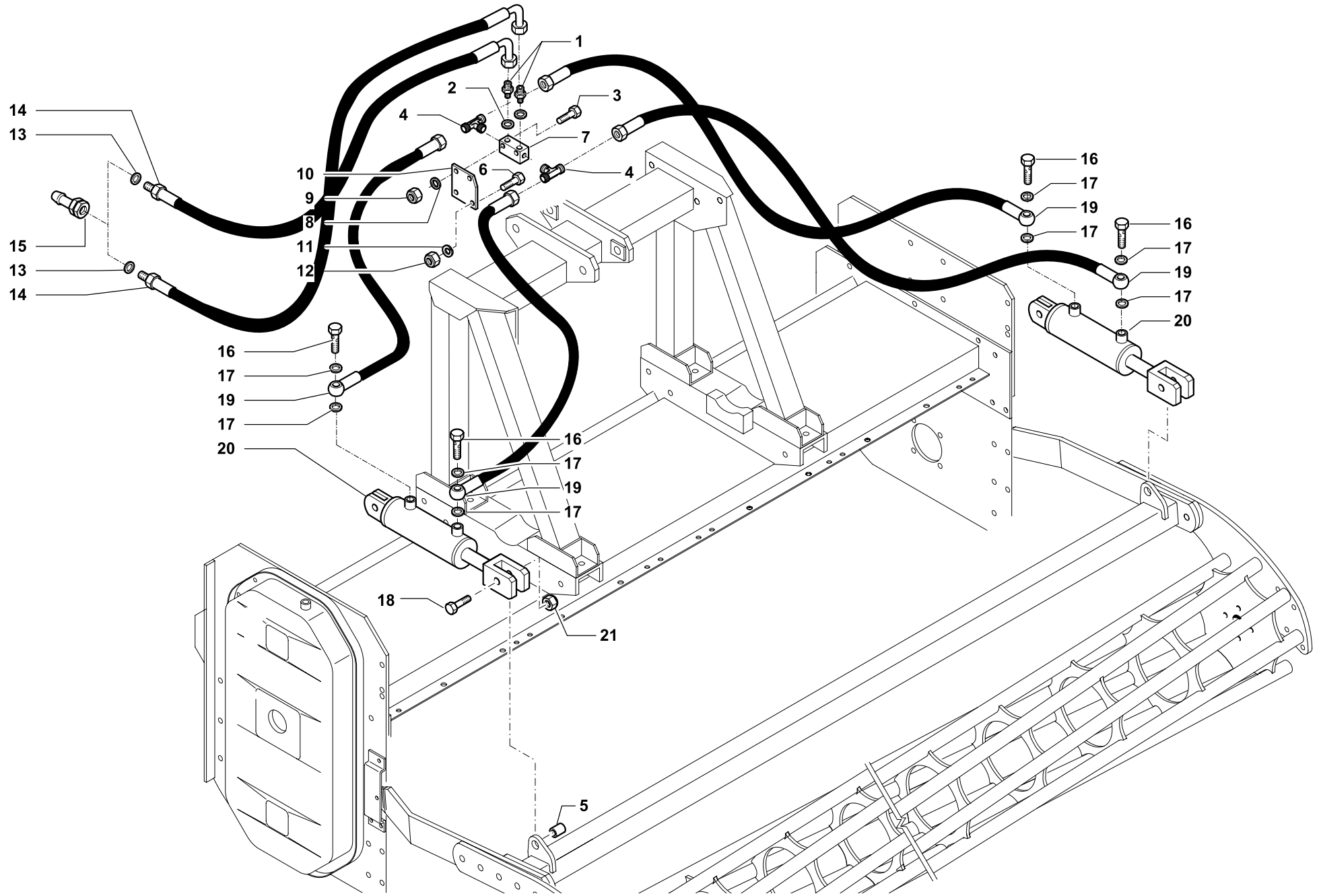
138657

Rev.

01

0902

RIF.	N. CODICE	DENOMINAZIONE	DENOMINATION	BEZEICHNUNG	DENOMINATION
34	011003	Grower	Grower	Federscheibe	Grower
35	612372	Chiusura	Plate	Plate	Platte
36	661402	Piastra	Plate	Plate	Platte
37	004054	Dado	Nut	Mutter	Ecrou
38	010006	Rondella	Washer	Unterlegscheibe	Rondelle
39	004019	Dado	Nut	Mutter	Ecrou
40	004072	Dado	Nut	Mutter	Ecrou
41	661403	Bussola	Bush	Buchse	Bague
42	004030	Rondella	Washer	Unterlegscheibe	Rondelle



IMPIANTO IDRAULICO SOLLEVAMENTO RULLO • HYDRAULIC SYSTEM
 HYDRAULISCHE ANLAGE • SYSTEME DU REGLAGE HYDRAULIQUE

Tav. Tab. Taf.	138525	Rev.	03 0205
----------------------	---------------	------	----------------



IMPIANTO IDRAULICO SOLLEVAMENTO RULLO • HYDRAULIC SYSTEM
HYDRAULISCHE ANLAGE • SYSTEME DU REGLAGE HYDRAULIQUE

Tav.
Tab.
Taf.

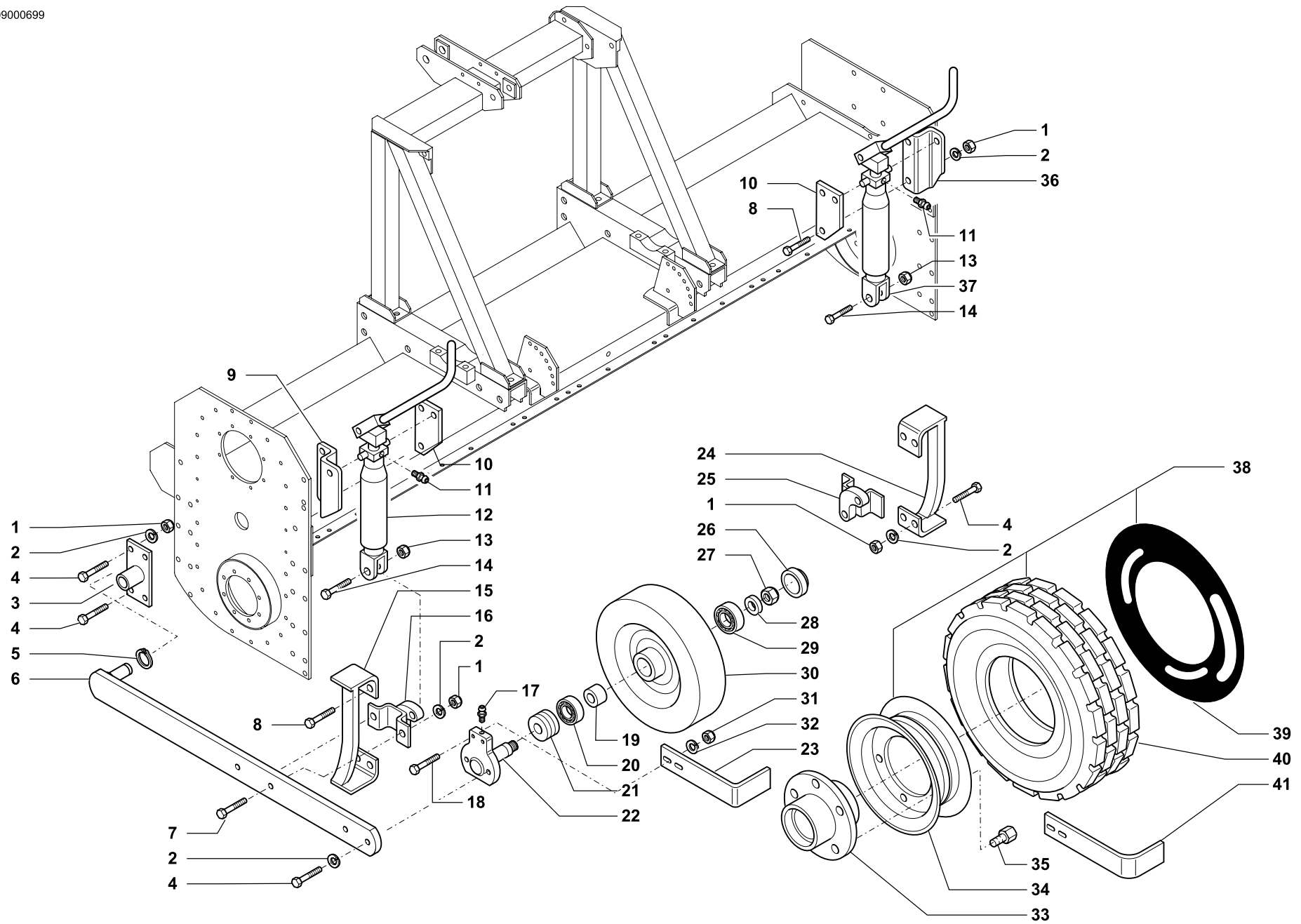
138525

Rev.

03

0205

RIF.	N. CODICE	DENOMINAZIONE	DENOMINATION	BEZEICHNUNG	DENOMINATION
1	022088	Riduzione	Nipple	Nippel	Reduction
2	022085	Rondella	Washer	Unterlegscheibe	Rondelle
3	014123	Vite	Screw	Schraube	Vis
4	022169	Raccordo a T	Connection	Anschluss	Raccord
5	423769	Distanziale	Spacer	Distanzstueck	Entretoise
6	014149	Vite	Screw	Schraube	Vis
7	021036	Valvola di blocco	Stop valve	Sperrventil	Suopape d'arret
8	010023	Rondella	Washer	Unterlegscheibe	Rondelle
9	004055	Dado	Nut	Mutter	Ecrou
10	611500	Supporto	Support	Halterung	Support
11	011002	Grower	Grower	Federscheibe	Grower
12	004058	Dado	Nut	Mutter	Ecrou
13	022087	Rondella	Washer	Unterlegscheibe	Rondelle
14	023064	Tubo	Hose	Schlauch	Tuyau
15	022082	Innesto rapido	Shap-on coupling	Baionett kupplung	Joint a baionette
16	022175	Vite strozzata	Screw	Schraube	Vis
17	022086	Rondella	Washer	Unterlegscheibe	Rondelle
18	014221	Vite	Screw	Schraube	Vis
19	023061	Tubo	Hose	Schlauch	Tuyau
20	471444	Martinetto completo	Complete jack	Komplette winde	Vèrin complete
	471842	Kit guarnizioni martinetto	Hydraulic ram seal group	Dichtungsgruppe	Groupe d'etancheite
21	004072	Dado	Nut	Mutter	Ecrou
	971750	Impianto idraulico sollevamento rullo	Hydraulic system	Hydraulische anlage	Systeme du reglage hydraulique



**RUOTE • WHEELS
STUTZRAD • ROUES**

Tav.	138109	Rev.	00 0699
Tab.			
Taf.			



RUOTE • WHEELS
STUTZRAD • ROUES

Tav.
Tab.
Taf.

138109

Rev.

00

0699

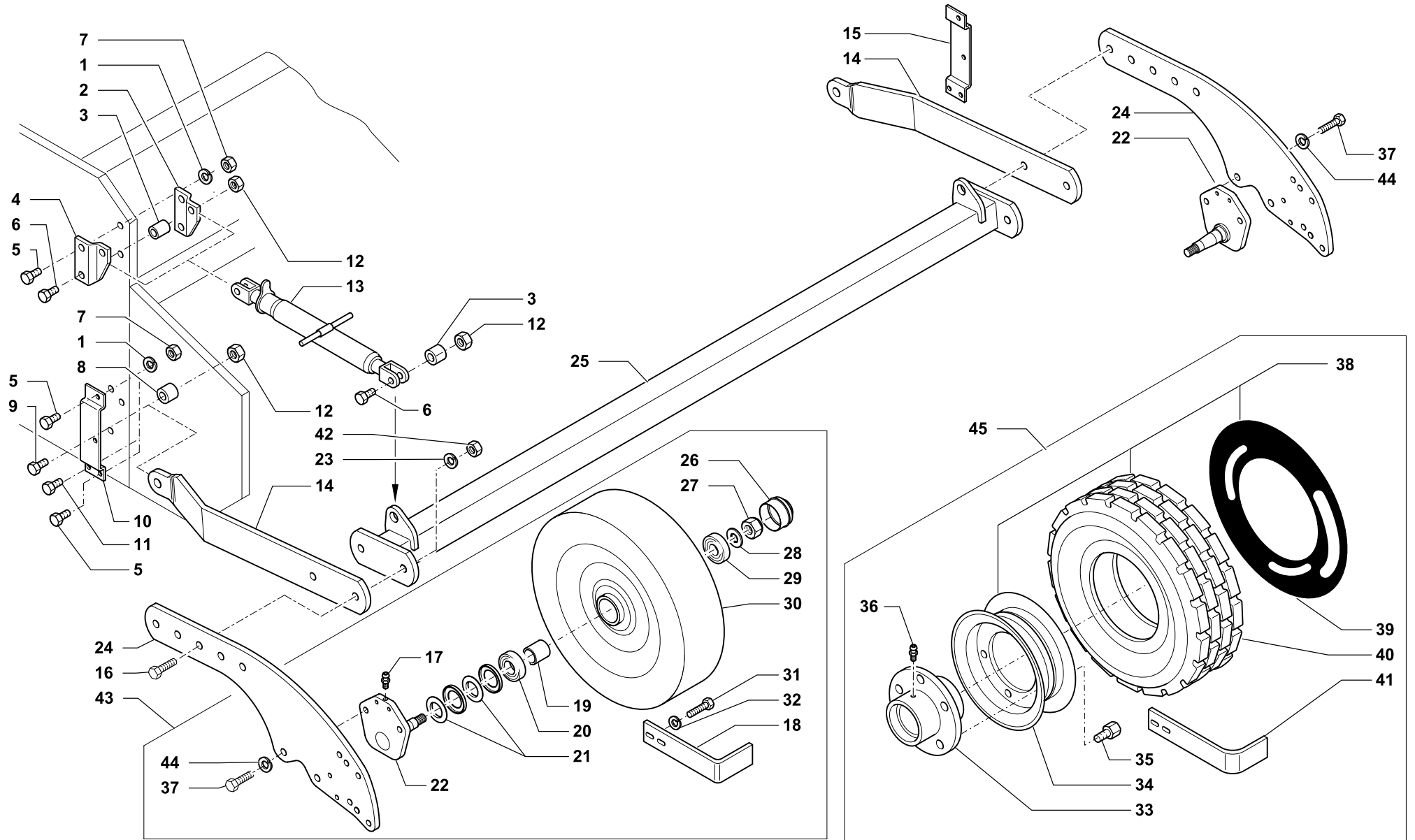
RIF.	N. CODICE	DENOMINAZIONE	DENOMINATION	BEZEICHNUNG	DENOMINATION
1	004004	Dado	Nut	Mutter	Ecrou
2	011004	Grower	Grower	Federscheibe	Grower
3	461887	Supporto	Support	Halterung	Support
4	014212	Vite	Screw	Schraube	Vis
5	001001	Anello arresto	Stop ring	Sperring	Bague d' arret
6	461886	Asta portaruota	Rod	Stange	Tige
7	014082	Vite	Screw	Schraube	Vis
8	014019	Vite	Screw	Schraube	Vis
9	423729	Contropiastra	Stay-plate	Gegenplatte gestell	Contre-plaque
10	423727	Piastra	Plate	Plate	Platte
11	008002	Ingrassatore	Grease nipple	Fettbuechse	Graisneur
12	471817	Vite di regolazione sinistra	L.H.S.screw	Schraube links	Vis gauche
13	004054	Dado	Nut	Mutter	Ecrou
14	014176	Vite	Screw	Schraube	Vis
15	461888	Guida sinistra	L.H.S. guide	Halterung links	Guide gauche
16	461890	Taschetta sinistra	L.H.S. locating plate	Befestigungsarm links	Poche gauche
17	008001	Ingrassatore	Grease nipple	Fettbuechse	Graisneur
18	014256	Vite	Screw	Schraube	Vis
19	323596	Boccola	Bush	Buchse	Bague
20	003090	Cuscinetto	Bearing	Kugellager	Roulement
21	099017	Parapolvere	Dust cover	Staubdeckel	Cache anti poussière
22	461891	Fusello portaruota	Stub axle	Flansch	Fusèè
23	423723	Raschietto	Scraper	Schaber	Racloir
24	461889	Guida destra	R.H.S. guide	Halterung recht	Guide droite
25	461896	Taschetta destra	R.H.S. locating plate	Befestigungsarm recht	Poche droite
26	015008	Coperchio	Cover	Deckel	Couvercle
27	004074	Dado	Nut	Mutter	Ecrou
28	010008	Rondella	Washer	Unterlegscheibe	Rondelle
29	003059	Cuscinetto	Bearing	Kugellager	Roulement
30	015015	Ruota in ferro	Wheels	Stutzrad	Roues
31	004058	Dado	Nut	Mutter	Ecrou
32	011002	Grower	Grower	Federscheibe	Grower
33	461895	Mozzo	Rubber	Radnabe	Moyeu
34	015003	Cerchio	Rin	Kreis	Cercle



RUOTE • WHEELS
STUTZRAD • ROUES

Tav. 138109 Rev. 00 0699
Tab. Taf.

RIF.	N. CODICE	DENOMINAZIONE	DENOMINATION	BEZEICHNUNG	DENOMINATION
35	014276	Vite	Screw	Schraube	Vis
36	423728	Contropiastra	Stay-plate	Gegenplatte gestell	Contre-plaque
37	471513	Vite di regolazione destra	R.H.S.screw	Schraube rechts	Vis droite
38	471848	Ruota + cerchio + pneumatico	Wheel + rin + tyre	Stutzrad + kreis + Pneumatisches	Ruoos + cercle + pneumatique
39	017004	Camera d' aria	Tube	Luftschlauch	Chambre a air
40	016007	Pneumatico	Tyre	Pneumatisches rad	Pneumatique
41	423777	Raschietto	Scraper	Schaber	Racloir
	471700	Ruota in ferro sinistra	L.H.S. rear wheel	Hintere rader links	Roue arriere gauche
	471701	Ruota in ferro destra	R.H.S. rear wheel	Hintere rader rechts	Roue arriere droite
	471846	Ruota in gomma sinistra	L.H.S. rear wheel	Hintere rader links	Roue arriere gauche
	471847	Ruota in gomma destra	R.H.S. rear wheel	Hintere rader rechts	Roue arriere droite



RUOTE POSTERIORI CON ATTACCHI RULLO • REAR WHEELS FOR ROLLER
 HECKRÄDER FÜR WALZE • ROUES ARRIERES AVEC FIXATIONS ROULEAU

Tav. Tab. Taf.	138670	Rev.	00 1200
----------------------	---------------	------	----------------



RUOTE POSTERIORI CON ATTACCHI RULLO • REAR WHEELS FOR ROLLER
HECKRÄDER FÜR WALZE • ROUES ARRIERES AVEC FIXATIONS ROULEAU

Tav.
Tab.
Taf.

138670

Rev.

00

1200

RIF.	N. CODICE	DENOMINAZIONE	DENOMINATION	BEZEICHNUNG	DENOMINATION
1	011004	Grower	Grower	Federscheibe	Grower
2	411528	Piastra	Plate	Plate	Platte
3	423764	Distanziale	Spacer	Distanzstueck	Entretoise
4	411529	Piastra	Plate	Plate	Platte
5	014019	Vite	Screw	Schraube	Vis
6	014176	Vite	Screw	Schraube	Vis
7	004004	Dado	Nut	Mutter	Ecrou
8	423566	Boccola	Bush	Buchse	Bague
9	014035	Vite	Screw	Schraube	Vis
10	423725	Taschetta rullo sinistra	L.H. Attach. arm fulcrum lug	Links Befestigungsarm	Fixation de bras gauche
11	014004	Vite	Screw	Schraube	Vis
12	004054	Dado	Nut	Mutter	Ecrou
13	971548	Tirante	Linkage	Zugbolzen	Tirant
14	911608	Semibraccio anteriore	Arm	Arm	Bras
15	423724	Taschetta rullo destra	R.H. Attach. arm fulcrum lug	Rechts Befestigungsarm	Fixation de bras droit
16	014355	Vite	Screw	Schraube	Vis
17	008001	Ingrassatore	Grease nipple	Fettbuechse	Graisneur
18	423739	Raschietto	Scraper	Schaber	Racloir
19	323596	Boccola	Bush	Buchse	Bague
20	003090	Cuscinetto	Bearing	Kugellager	Roulement
21	099017	Parapolvere	Dust cover	Staubdeckel	Cache anti poussière
22	461091	Fusello portaruota	Stub axle	Flansch	Fusèè
23	011017	Grower	Grower	Federscheibe	Grower
24	911607	Braccio posteriore	Arm	Arm	Bras
205	25	961153	Barra collegamento bracci rullo	Bar	Barre
26	015008	Coperchio	Cover	Deckel	Couvercle
27	004074	Dado	Nut	Mutter	Ecrou
28	010008	Rondella	Washer	Unterlegscheibe	Rondelle
29	003059	Cuscinetto	Bearing	Kugellager	Roulement
30	015015	Ruota in ferro	Wheels	Stutzrad	Roues
31	014227	Vite	Screw	Schraube	Vis
32	011032	Grower	Grower	Federscheibe	Grower
33	461895	Mozzo	Rubber	Radnabe	Moyeu



**RUOTE POSTERIORI CON ATTACCHI RULLO • REAR WHEELS FOR ROLLER
HECKRÄDER FÜR WALZE • ROUES ARRIERES AVEC FIXATIONS ROULEAU**

Tav.
Tab.
Taf.

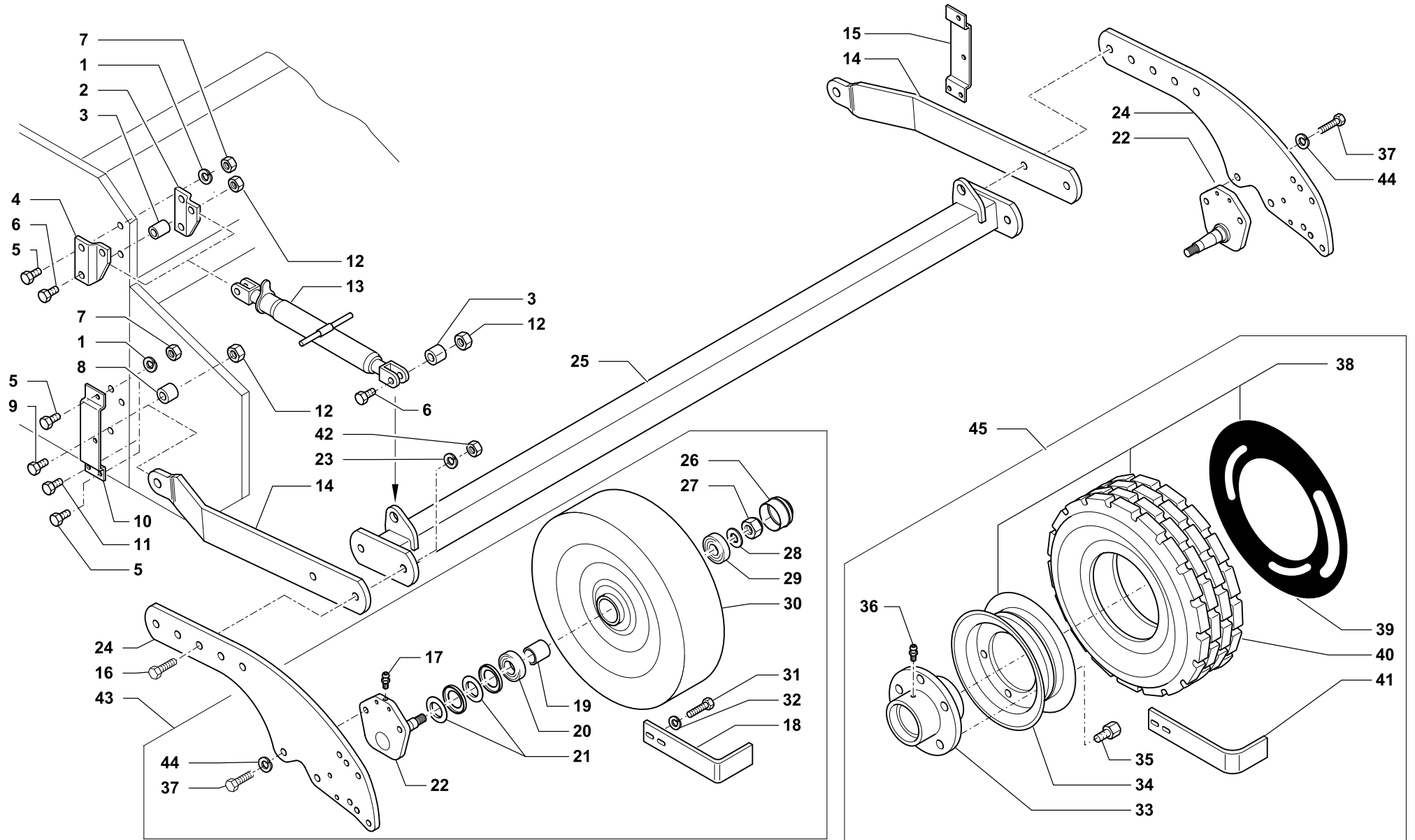
138670

Rev.

00

1200

RIF.	N. CODICE	DENOMINAZIONE	DENOMINATION	BEZEICHNUNG	DENOMINATION
34	015003	Cerchio	Rin	Kreis	Cercle
35	014276	Vite	Screw	Schraube	Vis
36	008007	Ingrassatore	Grease nipple	Fettbuechse	Graisneur
37	014085	Vite	Screw	Schraube	Vis
38	471848	Ruota + cerchio + pneumatico	Wheel + rin + tyre	Stutzrad + kreis + Pneumatisches	Ruoos + cercle + pneumatique
39	017004	Camera d' aria	Tube	Luftschlauch	Chambre a air
40	016007	Pneumatico	Tyre	Pneumatisches rad	Pneumatique
41	423777	Raschietto	Scraper	Schaber	Racloir
42	004065	Dado	Nut	Mutter	Ecrou
43	471870	Kit ruota in ferro	Steel wheels kit	Eisenrädersatz	Kit roue fer
44	011008	Grower	Grower	Federscheibe	Grower
45	471869	Kit ruota in gomma	Rubber wheels kit	Gummirädersatz	Kit roue pneumatique



RUOTE POSTERIORI CON ATTACCHI RULLO • REAR WHEELS FOR ROLLER
 HECKRÄDER FÜR WALZE • ROUES ARRIERES AVEC FIXATIONS ROULEAU

Tav. Tab. Taf.	138669	Rev.	00 1200
----------------------	---------------	------	----------------



RUOTE POSTERIORI CON ATTACCHI RULLO • REAR WHEELS FOR ROLLER
HECKRÄDER FÜR WALZE • ROUES ARRIERES AVEC FIXATIONS ROULEAU

Tav.
Tab.
Taf.

138669

Rev.

00

1200

RIF.	N. CODICE	DENOMINAZIONE	DENOMINATION	BEZEICHNUNG	DENOMINATION
1	011004	Grower	Grower	Federscheibe	Grower
2	411528	Piastra	Plate	Plate	Platte
3	423764	Distanziale	Spacer	Distanzstueck	Entretoise
4	411529	Piastra	Plate	Plate	Platte
5	014019	Vite	Screw	Schraube	Vis
6	014176	Vite	Screw	Schraube	Vis
7	004004	Dado	Nut	Mutter	Ecrou
8	423566	Boccola	Bush	Buchse	Bague
9	014035	Vite	Screw	Schraube	Vis
10	423725	Taschetta rullo sinistra	L.H. Attach. arm fulcrum lug	Links Befestigungsarm	Fixation de bras gauche
11	014004	Vite	Screw	Schraube	Vis
12	004054	Dado	Nut	Mutter	Ecrou
13	971548	Tirante	Linkage	Zugbolzen	Tirant
14	911606	Semibraccio anteriore	Arm	Arm	Bras
15	423724	Taschetta rullo destra	R.H. Attach. arm fulcrum lug	Rechts Befestigungsarm	Fixation de bras droit
16	014355	Vite	Screw	Schraube	Vis
17	008001	Ingrassatore	Grease nipple	Fettbuechse	Graisneur
18	423739	Raschietto	Scraper	Schaber	Racloir
19	323596	Boccola	Bush	Buchse	Bague
20	003090	Cuscinetto	Bearing	Kugellager	Roulement
21	099017	Parapolvere	Dust cover	Staubdeckel	Cache anti poussière
22	461091	Fusello portaruota	Stub axle	Flansch	Fusèè
23	011017	Grower	Grower	Federscheibe	Grower
24	911605	Braccio posteriore	Arm	Arm	Bras
230	961902	Barra collegamento bracci rullo	Bar	Stab	Barre
255	961903	Barra collegamento bracci rullo	Bar	Stab	Barre
280	961904	Barra collegamento bracci rullo	Bar	Stab	Barre
305	961905	Barra collegamento bracci rullo	Bar	Stab	Barre
26	015008	Coperchio	Cover	Deckel	Couvercle
27	004074	Dado	Nut	Mutter	Ecrou
28	010008	Rondella	Washer	Unterlegscheibe	Rondelle
29	003059	Cuscinetto	Bearing	Kugellager	Roulement
30	015015	Ruota in ferro	Wheels	Stutzrad	Roues



RUOTE POSTERIORI CON ATTACCHI RULLO • REAR WHEELS FOR ROLLER
HECKRÄDER FÜR WALZE • ROUES ARRIERES AVEC FIXATIONS ROULEAU

Tav.
Tab.
Taf.

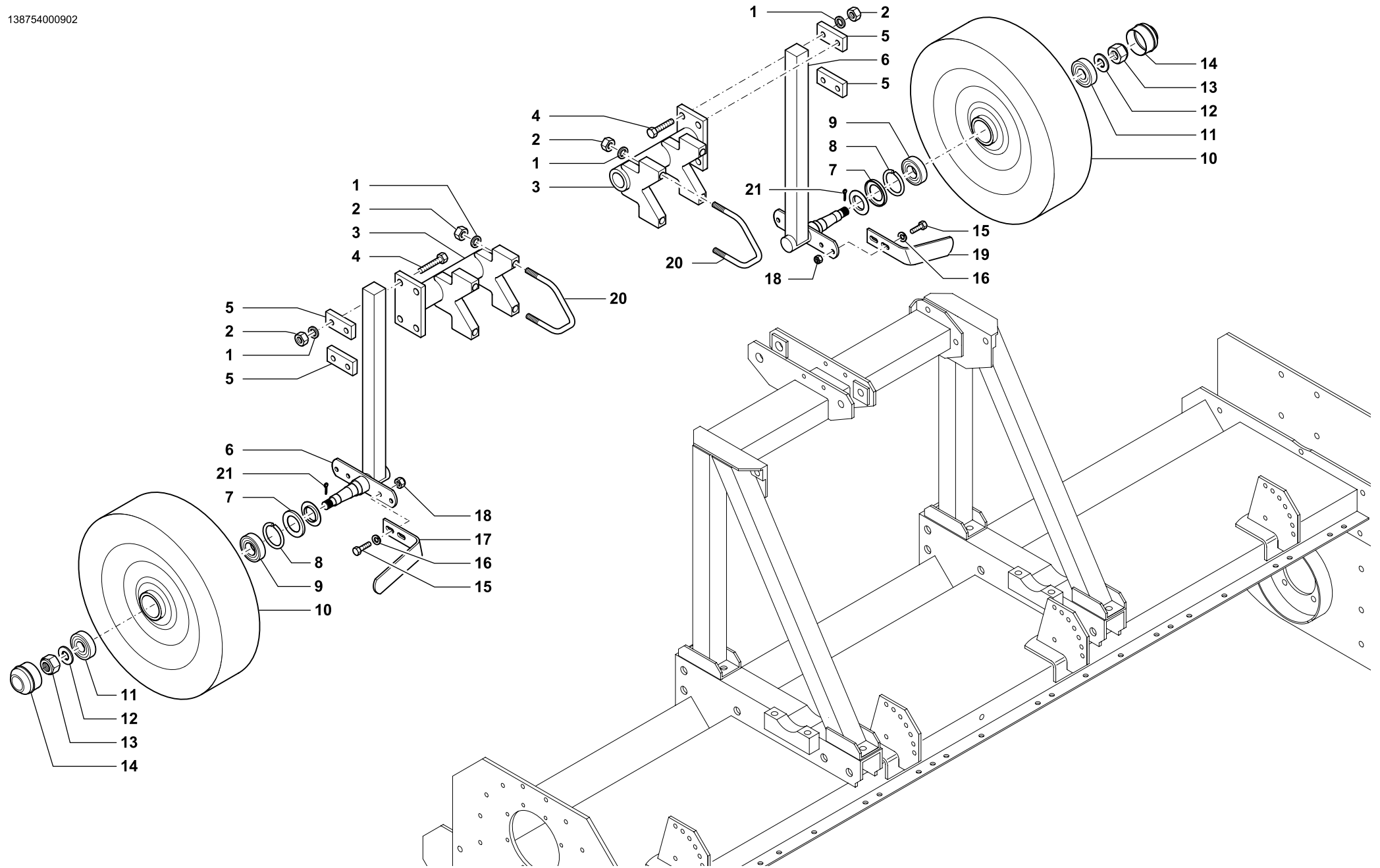
138669

Rev.

00

1200

RIF.	N. CODICE	DENOMINAZIONE	DENOMINATION	BEZEICHNUNG	DENOMINATION
31	014227	Vite	Screw	Schraube	Vis
32	011032	Grower	Grower	Federscheibe	Grower
33	461895	Mozzo	Rubber	Radnabe	Moyeu
34	015003	Cerchio	Rin	Kreis	Cercle
35	014276	Vite	Screw	Schraube	Vis
36	008007	Ingrassatore	Grease nipple	Fettbuechse	Graisseur
37	014085	Vite	Screw	Schraube	Vis
38	471848	Ruota + cerchio + pneumatico	Wheel + rin + tyre	Stutzrad + kreis + Pneumatisches	Ruoos + cercle + pneumatique
39	017004	Camera d' aria	Tube	Luftschlauch	Chambre a air
40	016007	Pneumatico	Tyre	Pneumatisches rad	Pneumatique
41	423777	Raschietto	Scraper	Schaber	Racloir
42	004065	Dado	Nut	Mutter	Ecrou
43	471870	Kit ruota in ferro	Steel wheels kit	Eisenrädersatz	Kit roue fer
44	011008	Grower	Grower	Federscheibe	Grower
45	471869	Kit ruota in gomma	Rubber wheels kit	Gummirädersatz	Kit roue pneumatique



RUOTE ANTERIORI • FRONT WHEELS
VORDERE RÄDE • ROUES AVANT

Tav.	138754	Rev.	00 0902
Tab.			
Taf.			



RUOTE ANTERIORI • FRONT WHEELS
VORDERE RÄDE • ROUES AVANT

Tav.
Tab.
Taf.

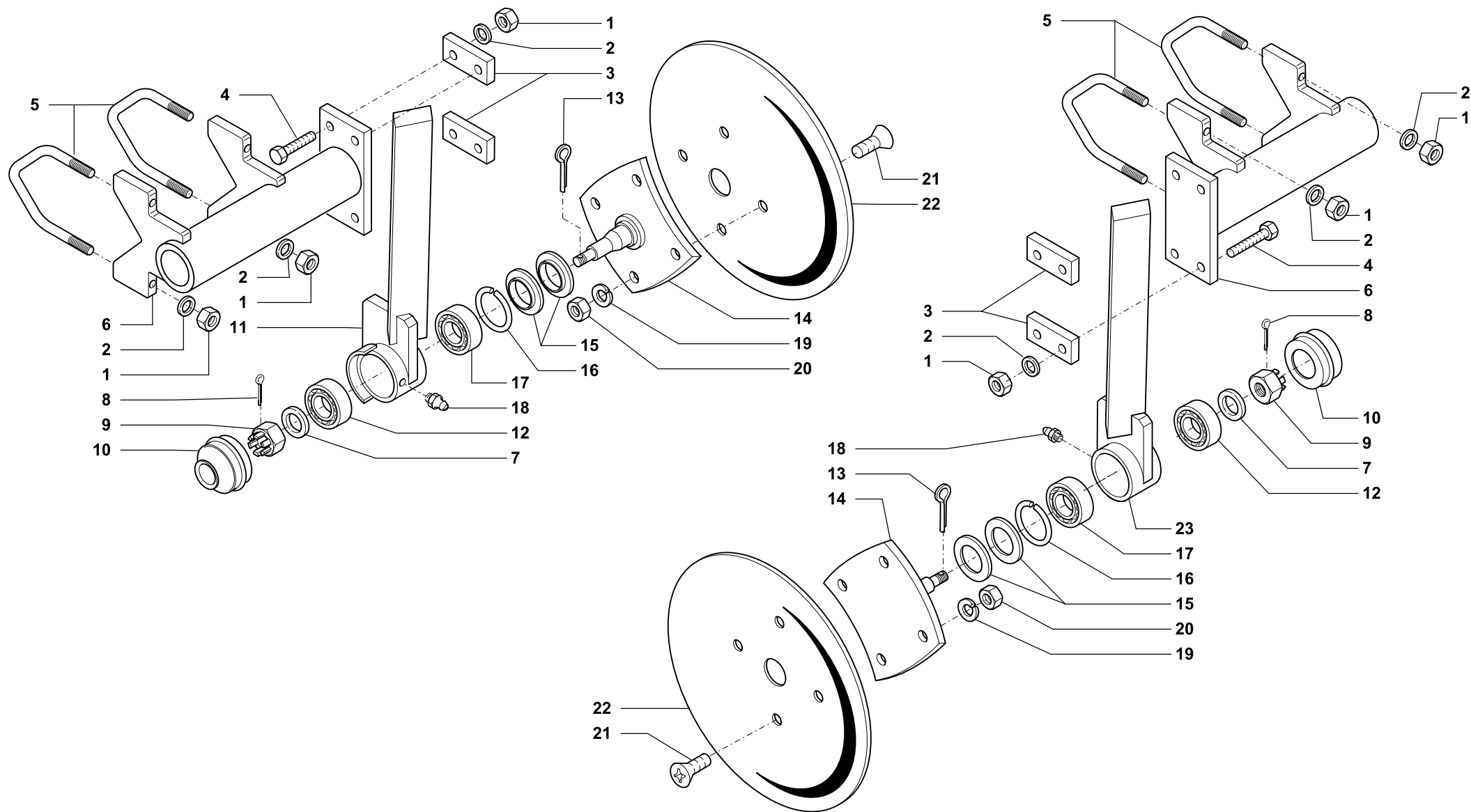
138754

Rev.

00

0902

RIF.	N. CODICE	DENOMINAZIONE	DENOMINATION	BEZEICHNUNG	DENOMINATION
1	010006	Rondella	Washer	Scheibe	Rondelle
2	004063	Dado	Nut	Mutter	Ecrou
3	961693	Supporto bloccaggio	Support	Halterung	Support
4	014241	Vite	Screw	Schraube	Vis
5	923690	Piastra	Plate	Teller	Plateau
6	961699	Porta ruota	Support	Halterung	Support
7	099017	Parapolvere	Dust cover	Staubdeckel	Cache anti poussière
8	001031	Anello di arresto	Stop ring	Sperring	Bague d'arret
9	003073	Cuscinetto	Bearing	Kugellager	Roulement
10	015012	Ruota	Wheel	Stutzrad	Roue
11	003087	Cuscinetto	Bearing	Kugellager	Roulement
12	010008	Rondella	Washer	Scheibe	Rondelle
13	004020	Dado	Nut	Mutter	Ecrou
14	015008	Cappellotto	Cover	Deckel	Couvercle
15	014205	Vite	Screw	Schraube	Vis
16	011002	Grower	Washer	Federring	Rondelle
17	223557	Raschietto SX	Scraper	Schaber	Racloir
18	004058	Dado	Nut	Mutter	Ecrou
19	223558	Raschietto SX	Scraper	Schaber	Racloir
20	923511	Cavallotto	U bolt	Bügelbolzen	Crampillon
21	002013	Copiglia	Split pin	Hohlstift	Goupille
	471169	Kit coppia ruote anteriori	Front wheels	Voedere råde	Roues avant



DISCHI CONVOGLIATORI • CONVEYOR DISC
 VORNE FÖDERERSCHRAUBE • DISQUES CONVOYEURS

Tav. Tab. Taf.	138110	Rev.	00 0699
----------------------	---------------	------	----------------



DISCHI CONVOGLIATORI • CONVEYOR DISC
VORNE FÖDERERSCHRAUBE • DISQUES CONVOYEURS

Tav.
Tab.
Taf.

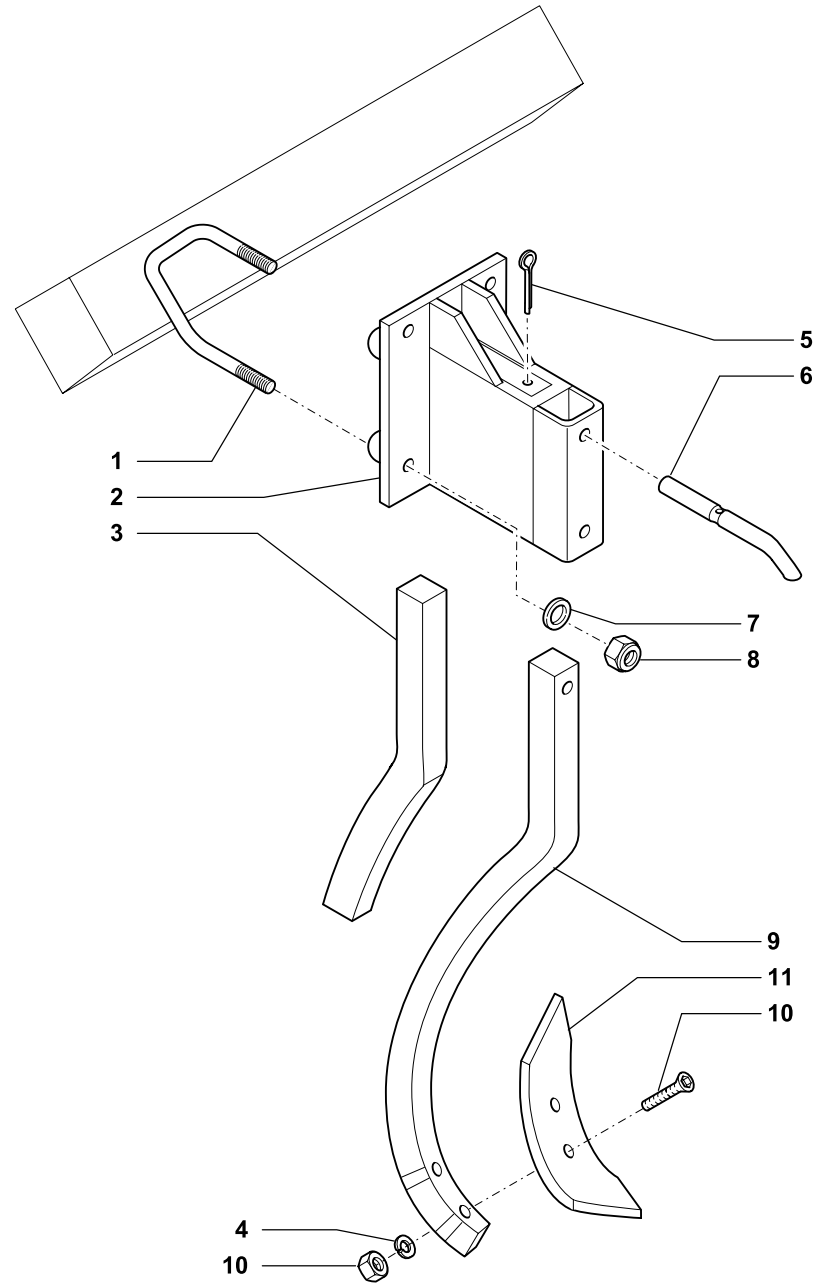
138110

Rev.

00

0699

RIF.	N. CODICE	DENOMINAZIONE	DENOMINATION	BEZEICHNUNG	DENOMINATION
1	004063	Dado	Nut	Mutter	Ecrou
2	010006	Rondella	Washer	Unterlegscheibe	Rondelle
3	923690	Piastra	Plate	Plate	Platte
4	014241	Vite	Screw	Schraube	Vis
5	923511	Cavallotto	U bolt	Bügelbolzen	Crampillon
6	961693	Supporto portadisco	Support	Halterung	Support
7	010009	Rondella	Washer	Unterlegscheibe	Rondelle
8	002014	Copiglia	Split pin	Hohlstift	Goupille
9	004080	Dado	Nut	Mutter	Ecrou
10	015008	Coperchio	Cover	Deckel	Couvercle
11	961691	Supporto sinistro	Support	Halterung	Support
12	003087	Cuscinetto	Bearing	Kugellager	Roulement
13	002013	Copiglia	Split pin	Hohlstift	Goupille
14	961524	Fusello	Drive hub	Nabe	Fusee
15	099017	Parapolvere	Dust cover	Staubdeckel	Cache anti poussière
16	001031	Anello di arresto	Stop ring	Sperring	Bague d'arret
17	003073	Cuscinetto	Bearing	Kugellager	Roulement
18	008002	Ingrassatore	Grease nipple	Fettbuechse	Graisser
19	011002	Grower	Grower	Federscheibe	Grower
20	004002	Dado	Nut	Mutter	Ecrou
21	014155	Vite	Screw	Schraube	Vis
22	099030	Disco frangizolle	Disc	Scheibe	Disque
23	961690	Supporto destro	Support	Halterung	Support
	971503	Dischi convogliatori anteriori	Front conveyor disc	Vorne födererschraube	Disques convoyeurs arriere





ROMPITRACCIA • LOOSENING TINE
SPURLOCKERER • BRISE TRACES

Tav.
Tab.
Taf.

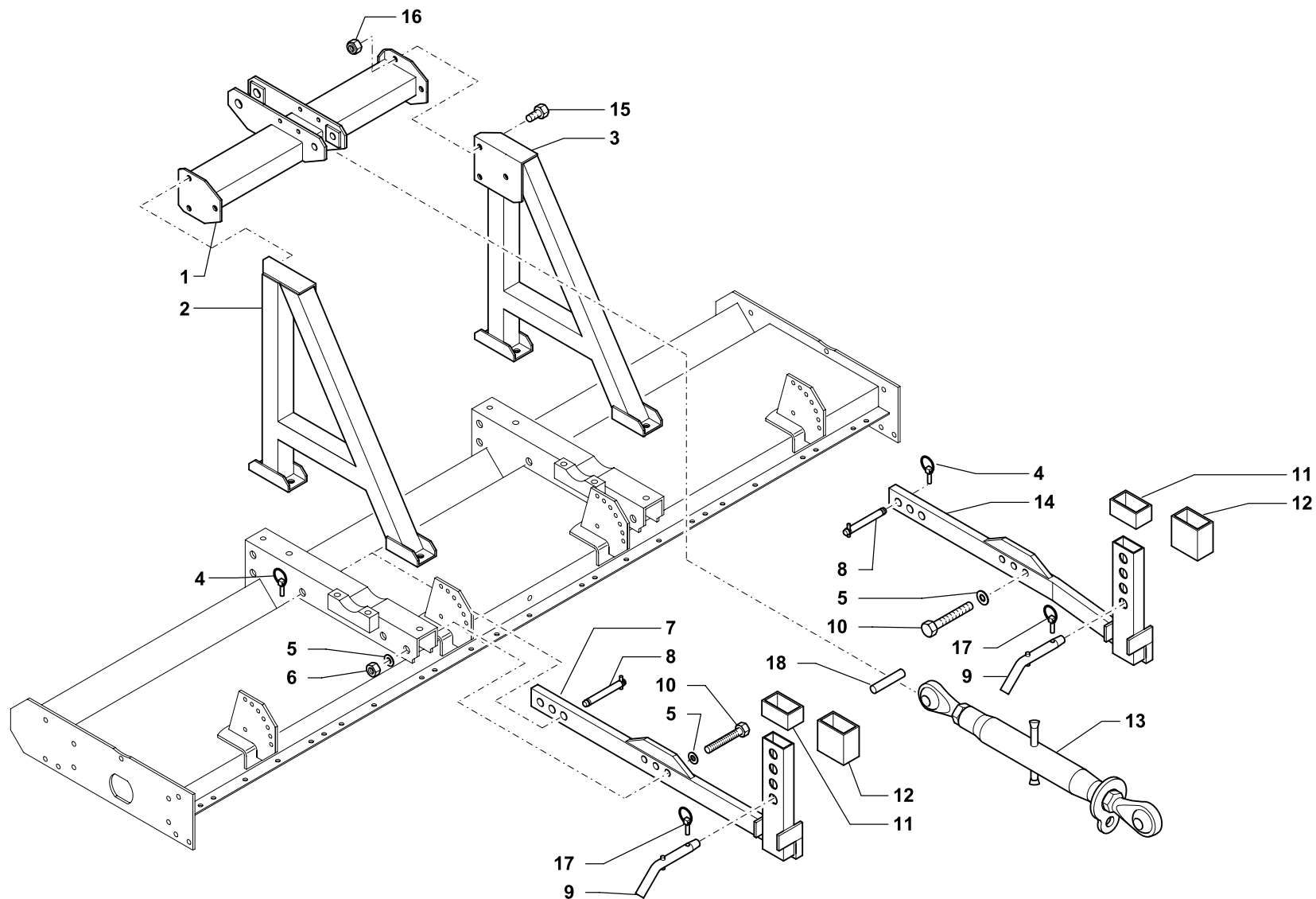
138111

Rev.

00

0699

RIF.	N. CODICE	DENOMINAZIONE	DENOMINATION	BEZEICHNUNG	DENOMINATION
1	923511	Cavallotto	U bolt	Bügelbolzen	Crampillon
2	961510	Supporto	Support	Halterung	Support
3	099027	Rinforzo	Arm	Arm	Bras
4	011003	Grower	Washer	Federring	Rondelle
5	002014	Copiglia	Split pin	Hohlstift	Goupille
6	923510	Perno	Pivot	Bolzen	Axe
7	010006	Rondella	Washer	Unterlegscheibe	Rondelle
8	004072	Dado	Nut	Mutter	Ecrou
9	099028	Ancora per rompitraccia	Ripper leg	Ripper	Ripper
10	014354	Vite + dado	Screw + nut	Schraube + mutter	Vis + ecrou
11	099029	Vomere	Blade	Messer	Burin
	471708	Rompitraccia singolo	Loosening tine	Spurlockerer	Brise traces



**ATTACCO COMBI • HITCH COMBI
ANSCHLUSSEN COMBI • ATTELAGE COMBI**

Tav. Tab. Taf.	138671	Rev.	00	1200
----------------------	---------------	------	-----------	-------------



ATTACCO COMBI • HITCH COMBI
ANSCHLUSSEN COMBI • ATTELAGE COMBI

Tav.
Tab.
Taf.

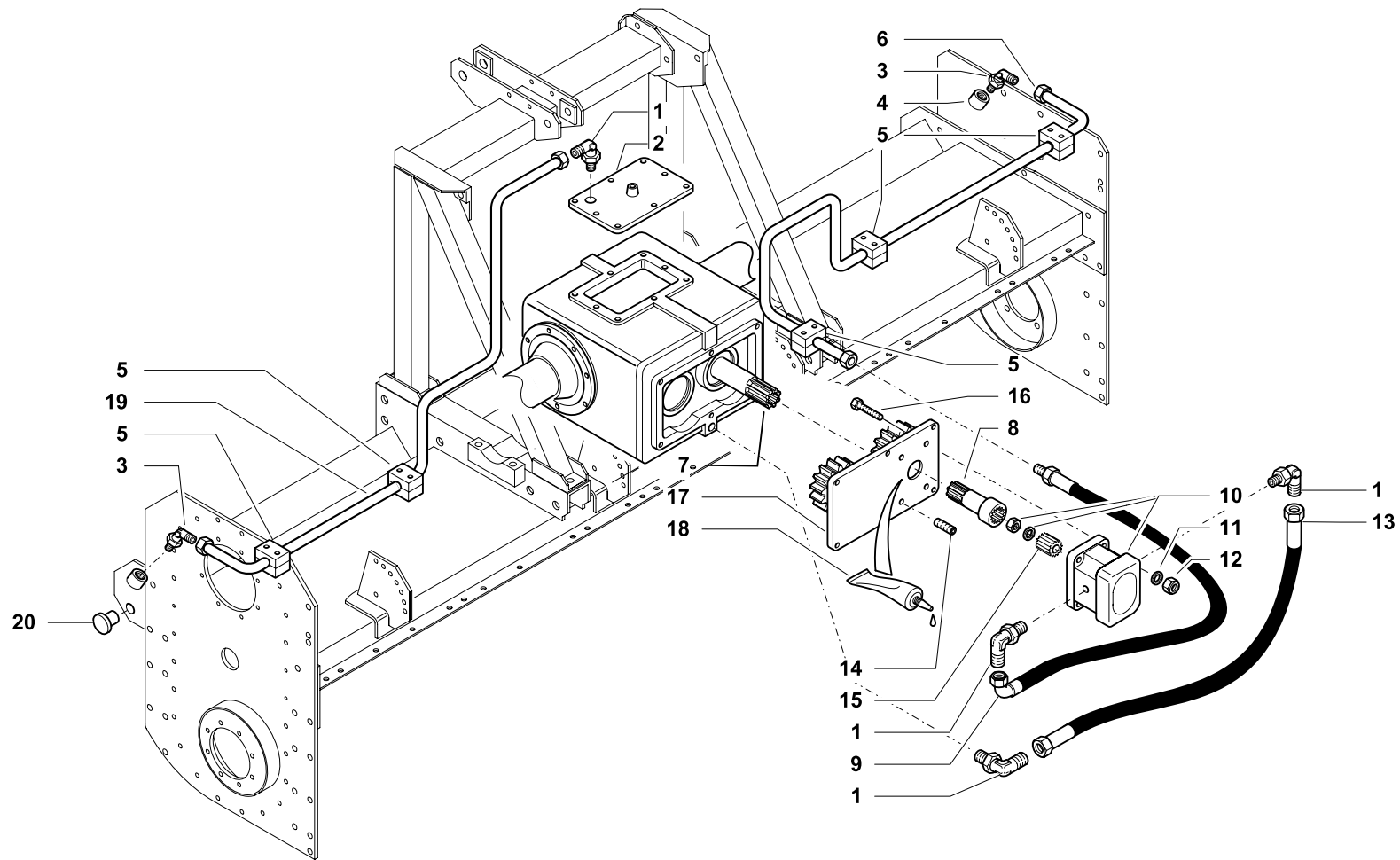
138671

Rev.

00

1200

RIF.	N. CODICE	DENOMINAZIONE	DENOMINATION	BEZEICHNUNG	DENOMINATION
1	461929	Traversa	Cross piece	Querbalken	Traverse
2	461883	Montante sinistro	Left pillar	Links Stander	Montant gauche
3	461882	Montante destro	Right pillar	Rechts Stander	Montant droit
4	013023	Spina a scatto	Pin	Stift	Goupille
5	010022	Rondella	Washer	Unterlegscheibe	Rondelle
6	004090	Dado	Nut	Mutter	Ecrou
7	972548	Supporto DX attacco seminatrice	Support	Halterung	Support
8	423745	Perno	Pivot	Bolzen	Axe
9	223559	Perno	Pivot	Bolzen	Axe
10	014304	Vite	Screw	Schraube	Vis
11	972542	Distanziale H=50	Spacer	Distanzstueck	Entretoise
12	972509	Distanziale H=100	Spacer	Distanzstueck	Entretoise
13	972541	Tirante terzo punto L=470-720	Linkage	Zugbolzen	Tirant
14	972547	Supporto SX attacco seminatrice	Support	Halterung	Support
15	014011	Vite	Screw	Schraube	Vis
16	004054	Dado	Nut	Mutter	Ecrou
17	013011	Spina	Pin	Stift	Goupille
18	099039	Boccola	Bush	Buchse	Bague
250	998202	Attacco seminatrice completo	Hitch combi	Anschlusen combi	Attelage combi
300	998205	Attacco seminatrice completo	Hitch combi	Anschlusen combi	Attelage combi





KIT DI RAFFREDDAMENTO • COOLING KIT
KUEHLUNGSKIT • KIT DE REFROIDISSEMENT

Tav.
Tab.
Taf.

138506

Rev.

00

0699

RIF.	N. CODICE	DENOMINAZIONE	DENOMINATION	BEZEICHNUNG	DENOMINATION	
1	022120	Raccordo	Connection	Anschluss	Raccord	
2	461073	Coperchio	Cover	Deckel	Couvercle	
3	023087	Raccordo	Connection	Anschluss	Raccord	
4	022108	Borchie a saldare	Boss to weld	Beschlag anzuschweissen	Manchon	
5	022110	Collare fermatubo	Collar	Schlauchschelle	Collier	
205 - 230	6	023097	Tubo mandata	Hose	Schlauch	Tuyau
255 - 280		023083	Tubo mandata	Hose	Schlauch	Tuyau
305 - 330		023084	Tubo mandata	Hose	Schlauch	Tuyau
7	423756	Albero 1" 3/4 Z6	Shaft	Welle	Arbre	
	423789	Albero 1" 3/4 Z20	Shaft	Welle	Arbre	
8	423758	Albero	Shaft	Welle	Arbre	
9	023088	Tubo	Hose	Schlauch	Tuyau	
10	021051	Pompa	Pump	Pumpe	Pompe	
11	010015	Rondella	Washer	Unterlegscheibe	Rondelle	
12	004083	Dado	Nut	Mutter	Ecrou	
13	023089	Tubo	Hose	Schlauch	Tuyau	
14	014305	Vite prigioniera	Screw	Schraube	Vis	
15	021050	Mozzo	Hub	Moyeu	Nabe	
16	014308	Vite	Screw	Schraube	Vis	
17	421611	Coperchio	Cover	Deckel	Couvercle	
18	094002	Motorsild	Motorsild	Motorsild	Motorsild	
205 - 230	19	023100	Tubo ritorno	Hose	Schlauch	Tuyau
255 - 280		023082	Tubo ritorno	Hose	Schlauch	Tuyau
305 - 330		023085	Tubo ritorno	Hose	Schlauch	Tuyau
20	022109	Tappo magnetico 1/4 gas	Plug	Verschluss	Bouchon	
205 - 230	971581	Kit raffreddamento	Cooling kit	Kuehlungskit	Kit de refroidissement	
255 - 280	971582	Kit raffreddamento	Cooling kit	Kuehlungskit	Kit de refroidissement	
305 - 330	971583	Kit raffreddamento	Cooling kit	Kuehlungskit	Kit de refroidissement	