

FARMGARD
ROBUST MACHINERY THAT WORKS



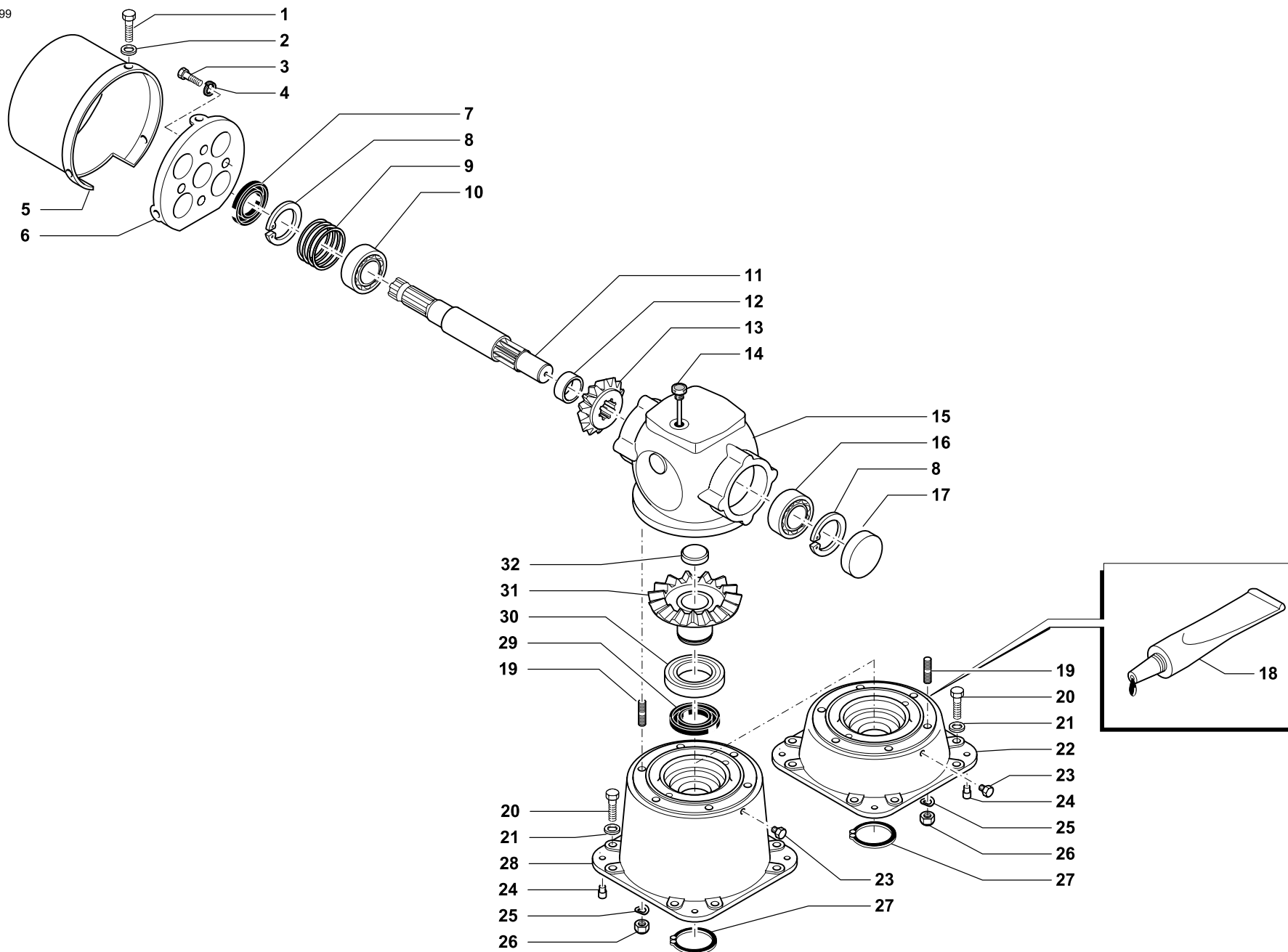
GO

CELLI SPARE PARTS REFERENCE GUIDE

POWER HARROW



112415001199



SCATOLA TRASMISSIONE LATERALE 1 VELOCITA' • LATERAL GEARBOX
GETRIEBEGEHAUSE SEITLICH • BOITE TRANSMISSION LATERALE



Tav.	112415	Rev.	00 1199
Tab.			
Taf.			



SCATOLA TRASMISSIONE LATERALE 1 VELOCITA' • LATERAL GEARBOX
GETRIEBEGEHAUSE SEITLICHEL • BOITE TRANSMISSION LATERALE

Tav.
Tab.
Taf.

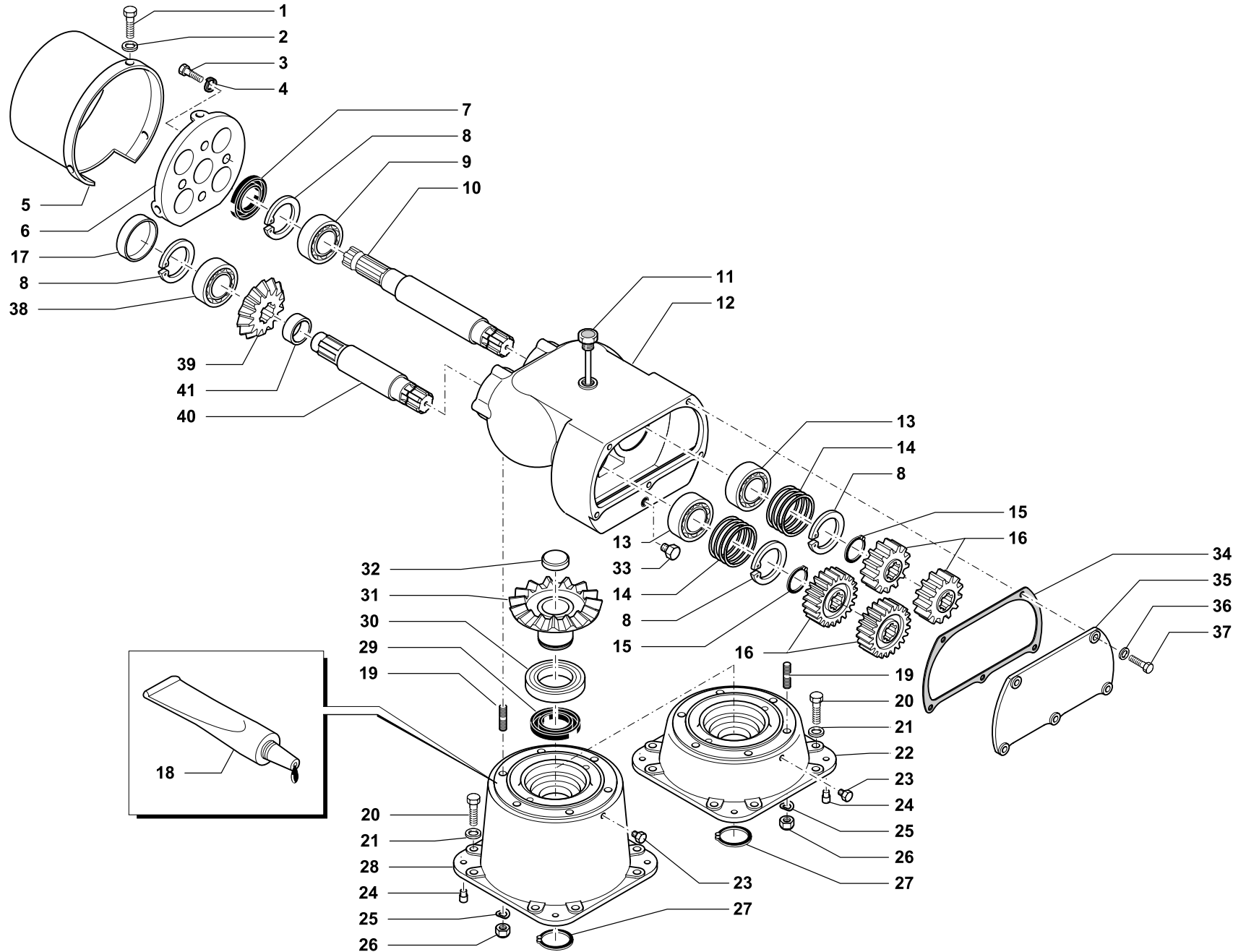
112415

Rev.

00

1199

RIF.	N. CODICE	DENOMINAZIONE	DENOMINATION	BEZEICHNUNG	DENOMINATION
1	014284	Vite	Screw	Schraube	Vis
2	010023	Rondella	Washer	Scheibe	Rondelle
3	014278	Vite	Screw	Schraube	Vis
4	011002	Grower	Grower	Federscheibe	Grower
5	124505	Cuffia protezione	Guard	Schütz	Protection
6	161500	Supporto porta cuffia	Support	Halterung	Support
7	007023	Paraolio	Oil seal	Simmerring	Joint huile
8	001007	Anello d'arresto	Stop ring	Sperring	Bague d'arret
9	611712	Serie spessori	Set spacers	Beilagscheiben	Serie d'épaisseurs
10	003002	Cuscinetto	Bearing	Kugellager	Roulement
11	342500	Albero	Shaft	Welle	Arbre
12	323538	Distanziale	Spacer	Distanzstueck	Entretoise
13	341514	Pignone conico Z13	Bevel pinion	Kegelrad	Pignon conique
14	022091	Tappo 1/2 gas	Plug	Verschluss	Bouchon
15	621712	Scatola 1 velocità	Housing	Gehäuse	Bôte
16	003040	Cuscinetto	Bearing	Kugellager	Roulement
17	007200	Coperchio	Cover	Deckel	Couvercle
18	094002	Sigillante	Glue	Klebstoff	Colle
19	014297	Vite prigioniera	Screw	Schraube	Vis
20	014213	Vite	Screw	Schraube	Vis
21	011013	Rondella	Washer	Scheibe	Rondelle
22	621713	Lanternia scatola H=82	Main rotor housing H=82	Hauptwelle halter H=82	Carter boîte de vitesse H=82
23	022009	Tappo 1/4 gas	Plug	Verschluss	Bouchon
24	623604	Spina di centraggio	Pin	Stift	Goupille
25	011013	Rosetta ondulata	Washer	Scheibe	Rondelle
26	004079	Dado autobloccante	Nut	Mutter	Ecrou
27	001010	Anello d'arresto	Stop ring	Sperring	Bague d'arret
28	621714	Lanternia scatola H=176	Main rotor housing H=176	Hauptwelle halter H=176	Carter boîte de vitesse H =176
29	007123	Paraolio	Oil seal	Simmerring	Joint huile
30	003122	Cuscinetto	Bearing	Kugellager	Roulement
31	622720	Corona Z22	Crown wheel	Tellerad	Pinion conique
32	611700	Tappo corona	Plug	Verschluss	Bouchon



SCATOLA TRASMISSIONE LATERALE 4 VELOCITA' • LATERAL GEARBOX
GETRIEBEGEHAUSE SEITLICH • BOITE TRANSMISSION LATERALE



Tav.	112416	Rev.	00 1199
Tab.			
Taf.			



SCATOLA TRASMISSIONE LATERALE 4 VELOCITA' • LATERAL GEARBOX
GETRIEBEGEHAUSE SEITLICHEL • BOITE TRANSMISSION LATERALE

Tav.
Tab.
Taf.

112416

Rev.

00

1199

RIF.	N. CODICE	DENOMINAZIONE	DENOMINATION	BEZEICHNUNG	DENOMINATION
1	014284	Vite	Screw	Schraube	Vis
2	010023	Rondella	Washer	Scheibe	Rondelle
3	014278	Vite	Screw	Schraube	Vis
4	011002	Grower	Grower	Federscheibe	Grower
5	124505	Cuffia protezione	Guard	Schütz	Protection
6	161500	Supporto porta cuffia	Support	Halterung	Support
7	007023	Paraolio	Oil seal	Simmerring	Joint huile
8	001007	Anello d'arresto	Stop ring	Sperring	Bague d'arret
9	003002	Cuscinetto	Bearing	Kugellager	Roulement
10	342501	Albero	Shaft	Welle	Arbre
11	022091	Tappo 1/2 gas	Plug	Verschluss	Bouchon
12	621716	Scatola cambio 4 velocità destra	Housing	Gehäuse	Bôte
	621715	Scatola cambio 4 velocità sinistra	Housing	Gehäuse	Bôte
13	003025	Cuscinetto	Bearing	Kugellager	Roulement
14	611712	Serie spessori	Set spacers	Beilagscheiben	Serie d'épaisseurs
15	001019	Anello d'arresto	Stop ring	Sperring	Bague d'arret
16	341505	Ingranaggio Z16	Gear 16 T	Zahnrad 16 Z	Engrenage 16 dents
	341506	Ingranaggio Z17	Gear 17 T	Zahnrad 17 Z	Engrenage 17 dents
	341507	Ingranaggio Z18	Gear 18 T	Zahnrad 18 Z	Engrenage 18 dents
	341508	Ingranaggio Z19	Gear 19 T	Zahnrad 19 Z	Engrenage 19 dents
17	007200	Coperchio	Cover	Deckel	Couvercle
18	094002	Sigillante	Glue	Klebstoff	Colle
19	014297	Vite prigioniera	Screw	Schraube	Vis
20	014213	Vite	Screw	Schraube	Vis
21	011013	Rondella	Washer	Scheibe	Rondelle
22	621713	Lanternia scatola H=82	Main rotor housing H=82	Hauptwelle halter H=82	Carter boîte de vitesse H=82
23	022009	Tappo 1/4 gas	Plug	Verschluss	Bouchon
24	623604	Spina di centraggio	Pin	Stift	Goupille
25	011013	Rosetta ondulata	Washer	Scheibe	Rondelle
26	004079	Dado autobloccante	Nut	Mutter	Ecrou
27	001010	Anello d'arresto	Stop ring	Sperring	Bague d'arret
28	621714	Lanternia scatola H=176	Main rotor housing H=176	Hauptwelle halter H=176	Carter boîte de vitesse H=176
29	007123	Paraolio	Oil seal	Simmerring	Joint huile



SCATOLA TRASMISSIONE LATERALE 4 VELOCITA' • LATERAL GEARBOX
GETRIEBEGEHAUSE SEITLICHEL • BOITE TRANSMISSION LATERALE

Tav.
Tab.
Taf.

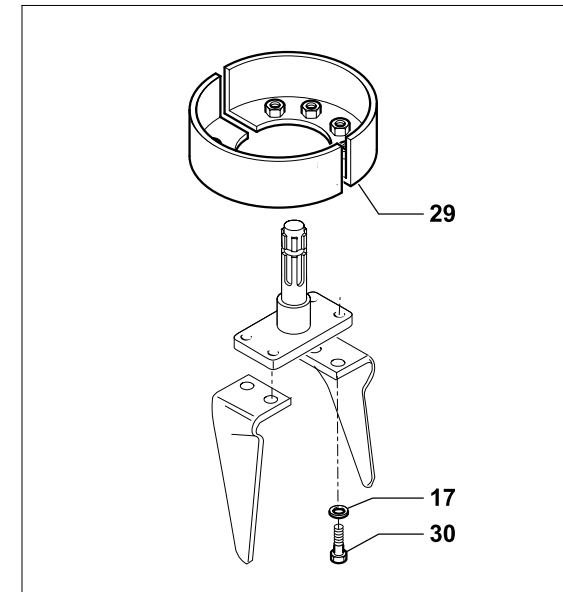
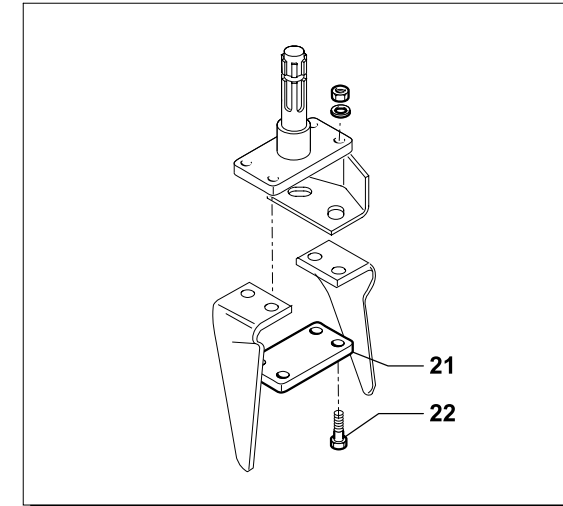
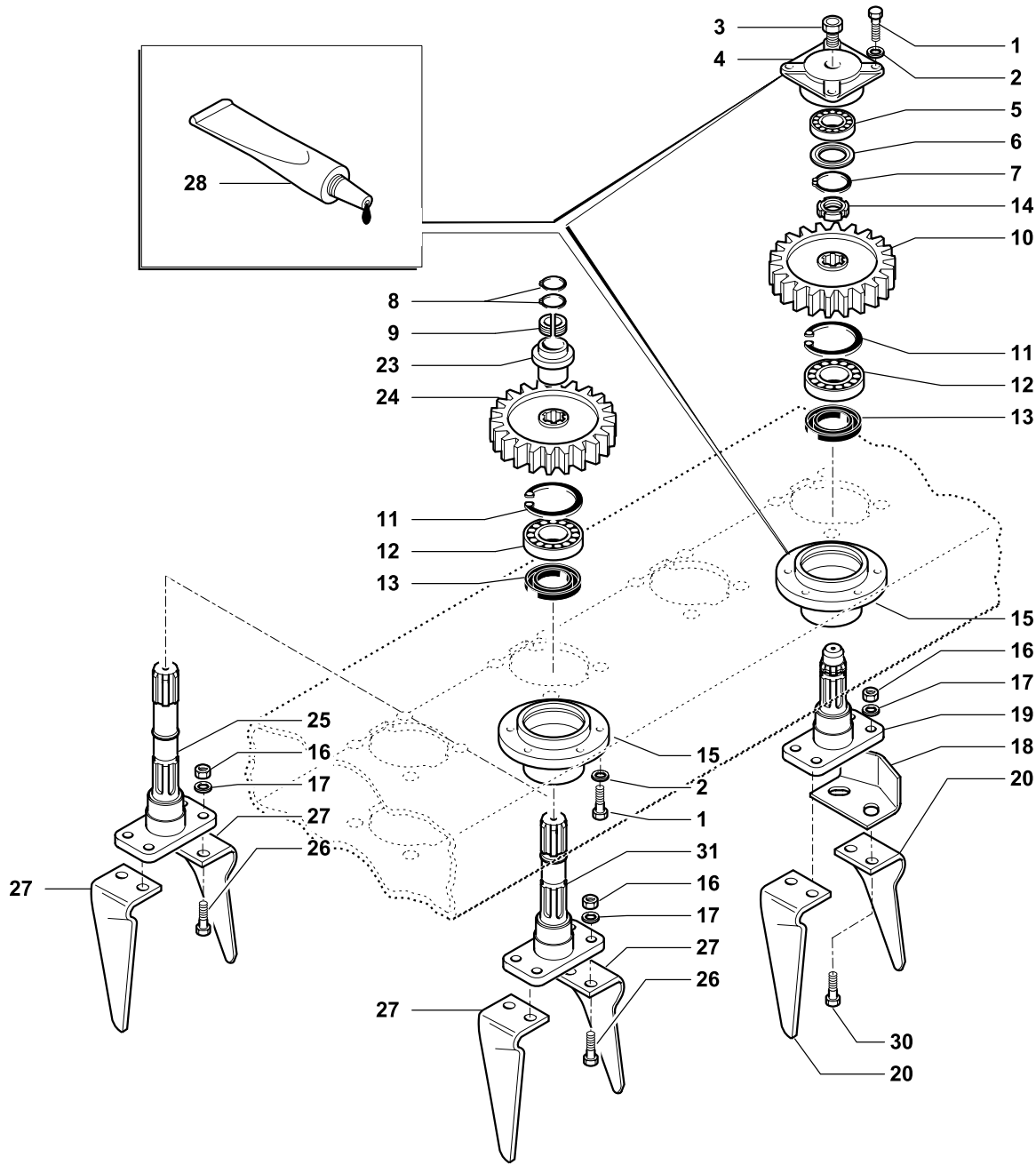
112416

Rev.

00

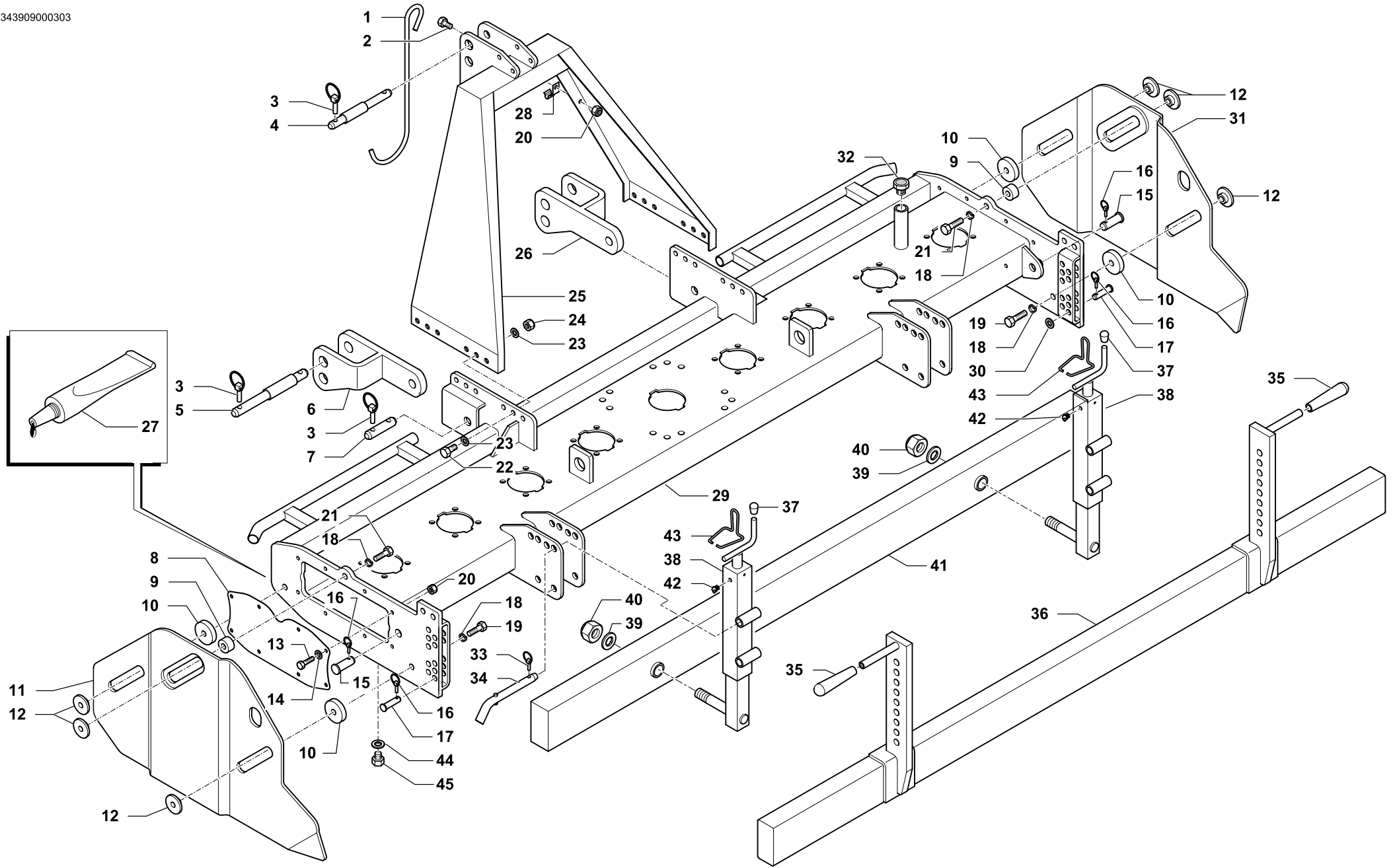
1199

RIF.	N. CODICE	DENOMINAZIONE	DENOMINATION	BEZEICHNUNG	DENOMINATION
30	003122	Cuscinetto	Bearing	Kugellager	Roulement
31	622720	Corona Z22	Crown wheel	Tellerad	Pinion conique
32	611700	Tappo corona	Plug	Verschluss	Bouchon
33	022060	Tappo conico 1/4 gas	Plug	Verschluss	Bouchon
34	343501	Guarnizione coperchio cambio	Gasket	Dichtung	Joint papier
35	340502	Coperchio cambio	Cover	Deckel	Couvercle
36	010005	Rondella	Washer	Scheibe	Rondelle
37	014145	Vite	Screw	Schraube	Vis
38	003040	Cuscinetto	Bearing	Kugellager	Roulement
39	341514	Pignone conico Z13	Bevel pinion	Kegelrad	Pignon conique
40	342502	Albero	Shaft	Welle	Arbre
41	323538	Distanziale	Spacer	Distanzstueck	Entretoise





RIF.	N. CODICE	DENOMINAZIONE	DENOMINATION	BEZEICHNUNG	DENOMINATION
1	014149	Vite	Screw	Schraube	Vis
2	011012	Rondella	Washer	Scheibe	Rondelle
3	008009	Ingrassatore	Grease nipple	Fettbuechse	Graisser
4	621700	Supporto superiore	Support	Halterung	Support
5	003051S	Cuscinetto	Bearing	Kugellager	Roulement
6	623631	Anello di protezione	Ring	Ring	Bague
7	001006	Anello di arresto	Stop ring	Sperring	Bague d'arret
8	001039	Anello di arresto	Stop ring	Sperring	Bague d'arret
9	623700	Anello di arresto ingranaggi	Ring	Ring	Bague
10	622704	Ingranaggio laterale Z49	Gear	Zahnrad	Engrenage
11	001005	Anello di arresto	Stop ring	Sperring	Bague d'arret
12	003021S	Cuscinetto	Bearing	Kugellager	Roulement
13	007240	Paraolio	Oil seal	Simmerring	Joint huile
14	005022	Ghiera	Ring nut	Nutmutter	Collier
15	621711	Supporto inferiore	Support	Halterung	Support
16	004063	Dado	Nut	Mutter	Ecrou
17	011005	Grower	Grower	Federscheibe	Grower
18	622717	Protezione per alberi rotori	Protection	Schuetz	Protection
19	622712	Albero rotore laterale	Shaft	Welle	Arbre
20	622733	Coltello destro H=260	Blade H=260	Rechtes H=260	Couteau H=260
21	611607	Contropiastra coltelli	Stay-plate	Gegenplatte gestell	Contre-plaque
22	014185	Vite	Screw	Schraube	Vis
23	623725	Bussola	Bush	Buchse	Bague
24	622705	Ingranaggio centrale Z49	Gear	Zahnrad	Engrenage
25	622711	Albero rotore centrale (campana alta)	Shaft	Welle	Arbre
26	014296	Vite	Screw	Schraube	Vis
27	622732	Coltello sinistro H=260	Blade H=260	Rechtes H=260	Couteau H=260
28	094005	Sigillante	Glue	Klebstoff	Colle
29	661746	Protezione supporto inferiore	Lower housing protection	Halterung schutz	Protection support inferieur
30	014296	Vite	Screw	Schraube	Vis
31	622721	Albero rotore centrale (campana bassa)	Shaft	Welle	Arbre



TELAIO • FRAME
RAHMEN • CHASSIS

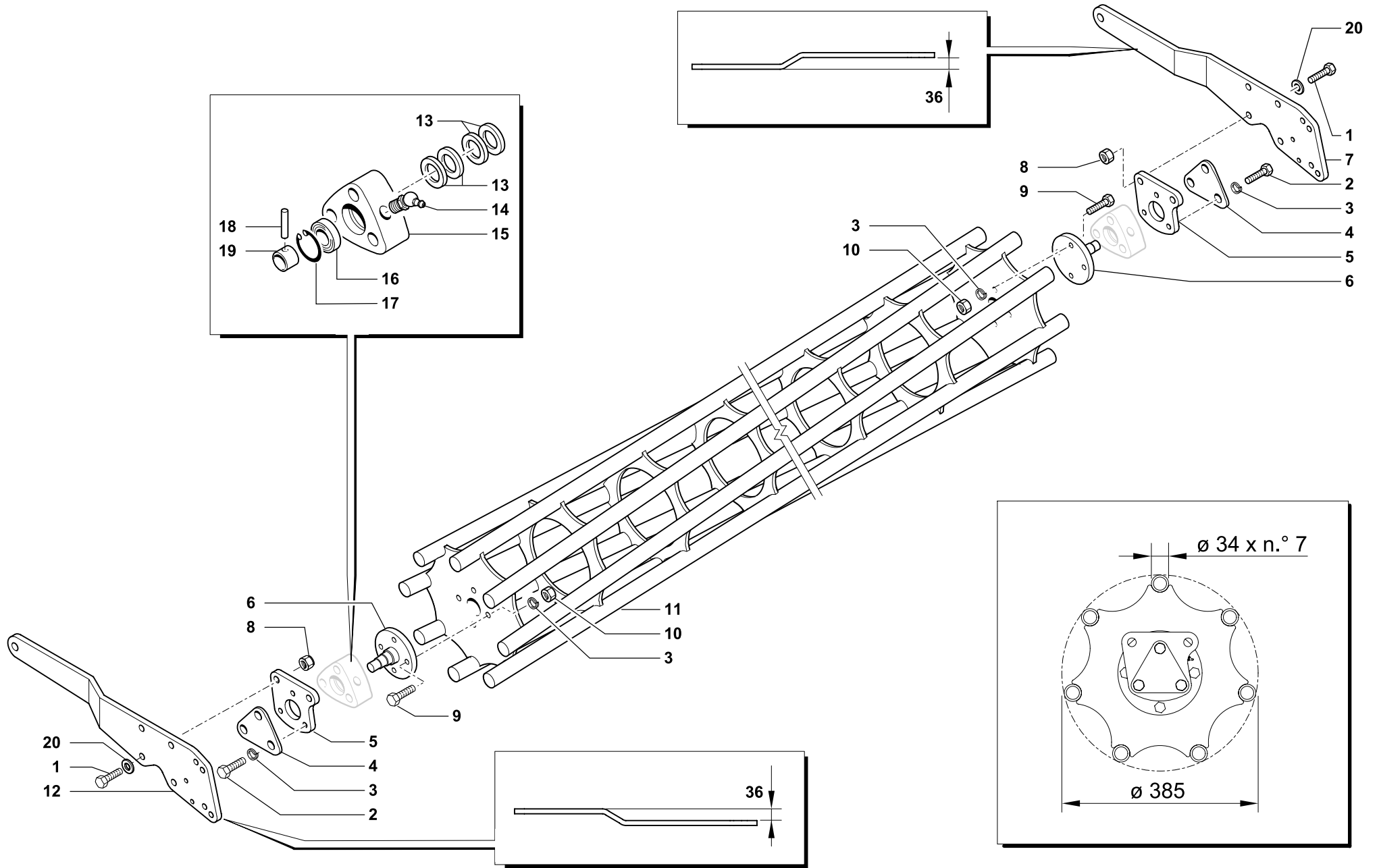
Tav. Tab. Taf.	343909	Rev.	00 0303
----------------------	---------------	------	----------------



RIF.	N. CODICE	DENOMINAZIONE	DENOMINATION	BEZEICHNUNG	DENOMINATION
1	523652	Gancio cardano 402 mm	Drive shaft hook	Gelenkwelle aufhaengung	Crochet
2	014001	Vite	Screw	Schraube	Vis
3	013011	Spina a scatto	Safety pin	Splint	Goupille
4	123534	Perno superiore ø 19 - ø 25	Pivot	Bolzen	Axe
5	623757	Perno ø 22 - ø 28 L=250	Pivot	Bolzen	Axe
6	661573	Attacco inferiore sinistro	Hitch	Anhängung	Fixation
7	623726	Perno	Pivot	Bolzen	Axe
8	611619	Coperchio	Cover	Deckel	Couvercle
9	623363	Distanziale	Spacer	Distanzstueck	Entretoise
10	623418	Rondella	Washer	Scheibe	Rondelle
11	661577	Laterale parazole SX	L.H.Clod bumper	L.H.Erdklumpenschutz	Pare-mottes gauche
12	623362	Blocchetto di fissaggio	Stop plate	Schweislappen	Bloc de fixation
13	014245	Vite	Screw	Schraube	Vis
14	010023	Rondella	Washer	Scheibe	Rondelle
15	623563	Perno attacco rullo	Pivot	Bolzen	Axe
16	013023	Spina a scatto	Safety pin	Splint	Goupille
17	332515	Perno regolazione rullo	Pivot	Bolzen	Axe
18	011004	Grower	Washer	Federring	Rondelle
19	014176	Vite	Screw	Schraube	Vis
20	004055	Dado	Nut	Mutter	Ecrou
21	014082	Vite	Screw	Schraube	Vis
22	014145	Vite	Screw	Schraube	Vis
23	010005	Rondella	Washer	Scheibe	Rondelle
24	004079	Dado	Nut	Mutter	Ecrou
25	661818	Castello 3° punto	Third point	Hebe boch	Bati 3 point
26	661572	Attacco inferiore destro	Hitch	Anhängung	Fixation
27	094006	Sigillante	Glue	Klebstoff	Colle
28	611728	Staffa gancio	Flask	Pratze	Bride
150	29	662750	Telaio	Frame	Chassis
175		662751	Telaio	Frame	Chassis
200		662752	Telaio	Frame	Chassis
225		662753	Telaio	Frame	Chassis
250		662754	Telaio	Frame	Chassis
300		662755	Telaio	Frame	Chassis



RIF.	N. CODICE	DENOMINAZIONE	DENOMINATION	BEZEICHNUNG	DENOMINATION	
30	010002	Rondella	Washer	Scheibe	Rondelle	
31	661578	Laterale parazole DX	R.H.Clod bumper	R.H.Erdklumpenschutz	Pare-mottes droite	
32	022163	Tappo cofano	Plug	Verschluss	Bouchon	
33	013023	Spina a scatto	Safety pin	Splint	Goupille	
34	623370	Perno reg. barra	Pivot	Bolzen	Axe	
35	099045	Manopola	Knob	Poignée	Griff	
150	36	662790	Barra livellatrice	Levelling bar	Seitenbleche	Barre niveleuse
175		662791	Barra livellatrice	Levelling bar	Seitenbleche	Barre niveleuse
200		662792	Barra livellatrice	Levelling bar	Seitenbleche	Barre niveleuse
225		662793	Barra livellatrice	Levelling bar	Seitenbleche	Barre niveleuse
250		662794	Barra livellatrice	Levelling bar	Seitenbleche	Barre niveleuse
300		662795	Barra livellatrice	Levelling bar	Seitenbleche	Barre niveleuse
37	022157	Tappo in gomma	Plug	Verschluss	Bouchon	
38	662582	Vite di regolazione	Threaded bar	Spindel	Vis de réglage	
39	010026	Rondella	Washer	Scheibe	Rondelle	
40	004031	Dado	Nut	Mutter	Ecrou	
150	41	662800	Barra livellatrice a vite	Levelling bar	Seitenbleche	Barre niveleuse
175		662801	Barra livellatrice a vite	Levelling bar	Seitenbleche	Barre niveleuse
200		662802	Barra livellatrice a vite	Levelling bar	Seitenbleche	Barre niveleuse
225		662803	Barra livellatrice a vite	Levelling bar	Seitenbleche	Barre niveleuse
250		662804	Barra livellatrice a vite	Levelling bar	Seitenbleche	Barre niveleuse
300		662805	Barra livellatrice a vite	Levelling bar	Seitenbleche	Barre niveleuse
42	008005	Ingrassatore	Grease nipple	Fettbuechse	Graisser	
43	612891	Molla di bloccaggio	Spring	Feder	Ressort de blocage	
44	022086	Rondella	Washer	Scheibe	Rondelle	
45	022180	Tappo	Plug	Pfropfen	Bouchon	

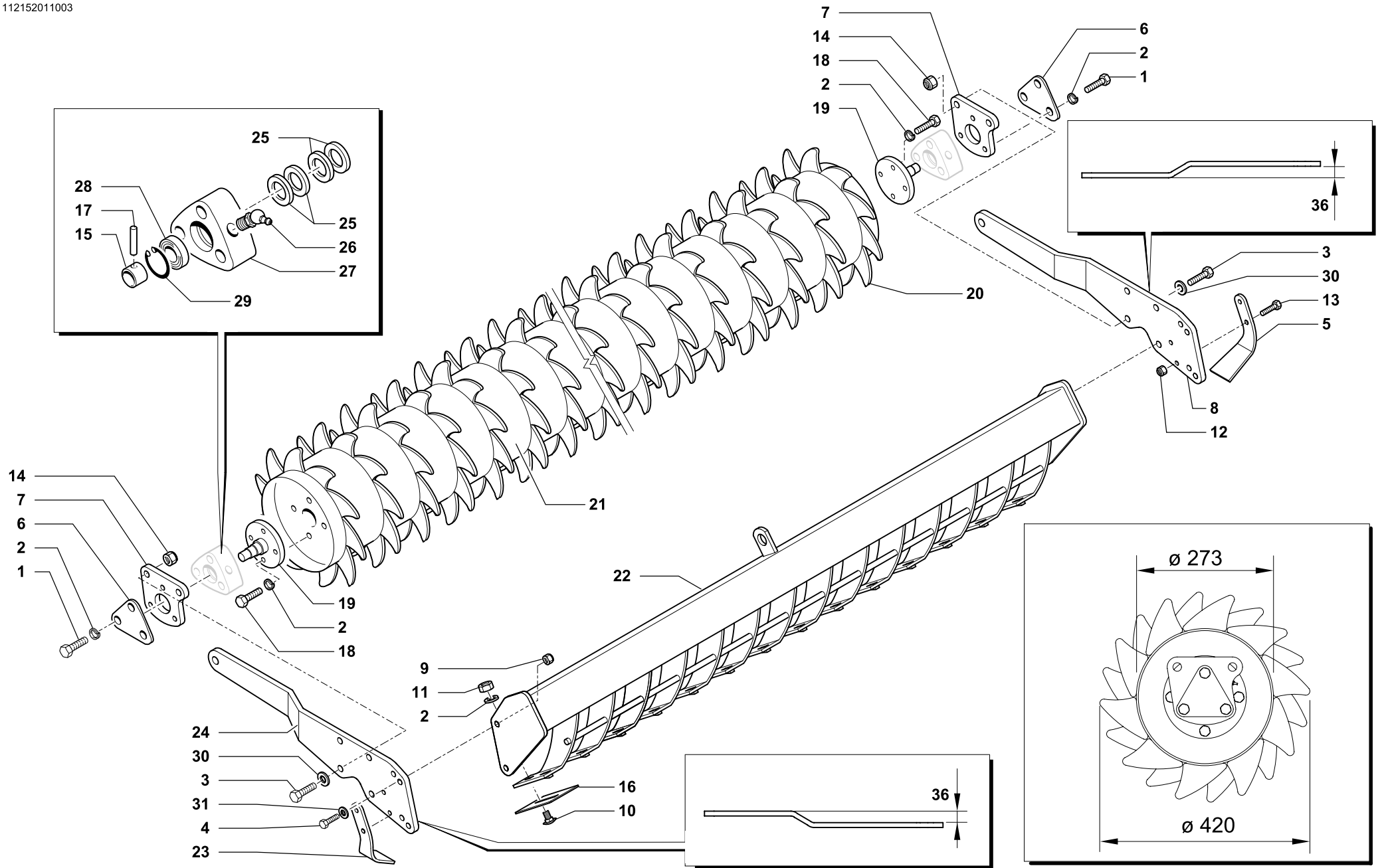


RULLO GABBIA Ø 385 • CAGE ROLLER Ø 385
 KÄFIGWALZE Ø 385 • ROULEAU CAGE Ø 385

Tav. Tab. Taf.	343764	Rev.	00 0303
----------------------	---------------	------	----------------



RIF.	N. CODICE	DENOMINAZIONE	DENOMINATION	BEZEICHNUNG	DENOMINATION
1	014192	Vite	Screw	Schraube	Vis
2	014145	Vite	Screw	Schraube	Vis
3	011003	Grower	Grower	Federscheibe	Grower
4	612372	Chiusura	Plate	Plate	Platte
5	661402	Piastra	Plate	Plate	Platte
6	661401	Fusello	Stub axle	Flansch	Fusee
7	911551	Braccio DX L=520	Arm	Arm	Bras
8	004072	Dado	Nut	Mutter	Ecrou
9	014254	Vite	Screw	Schraube	Vis
10	004030	Dado	Nut	Mutter	Ecrou
155	961970	Rullo gabbia	Cage roller	Käfigwalze	Rouleau cage
170	961971	Rullo gabbia	Cage roller	Käfigwalze	Rouleau cage
200	961972	Rullo gabbia	Cage roller	Käfigwalze	Rouleau cage
225	961973	Rullo gabbia	Cage roller	Käfigwalze	Rouleau cage
12	911550	Braccio SX L=520	Arm	Arm	Bras
13	099018	Gruppo parapolvere	Dust cover	Staubdeckel	Cache anti poussière
14	008005	Ingrassatore	Grease nipple	Fettbuechse	Graisneur
15	421604	Supporto	Support	Halterung	Support
16	003051	Cuscinetto	Bearing	Kugellager	Roulement
17	001006	Anello di arresto	Stop ring	Sperring	Bague d'arret
18	013019	Spina	Pin	Stift	Goupille
19	661403	Bussola	Bush	Buchse	Bague
20	010006	Rondella	Washer	Scheibe	Rondelle



RULLO PACKER Ø 420 • PACKER ROLLER Ø 420
 PACKERWALZE Ø 420 • ROULEAU PACKER Ø 420

Tav. Tab. Taf.	343768	Rev.	00 0303
----------------------	---------------	------	----------------



RULLO PACKER Ø 420 • PACKER ROLLER Ø 420
PACKERWALZE Ø 420 • ROULEAU PACKER Ø 420

Tav.
Tab.
Taf.

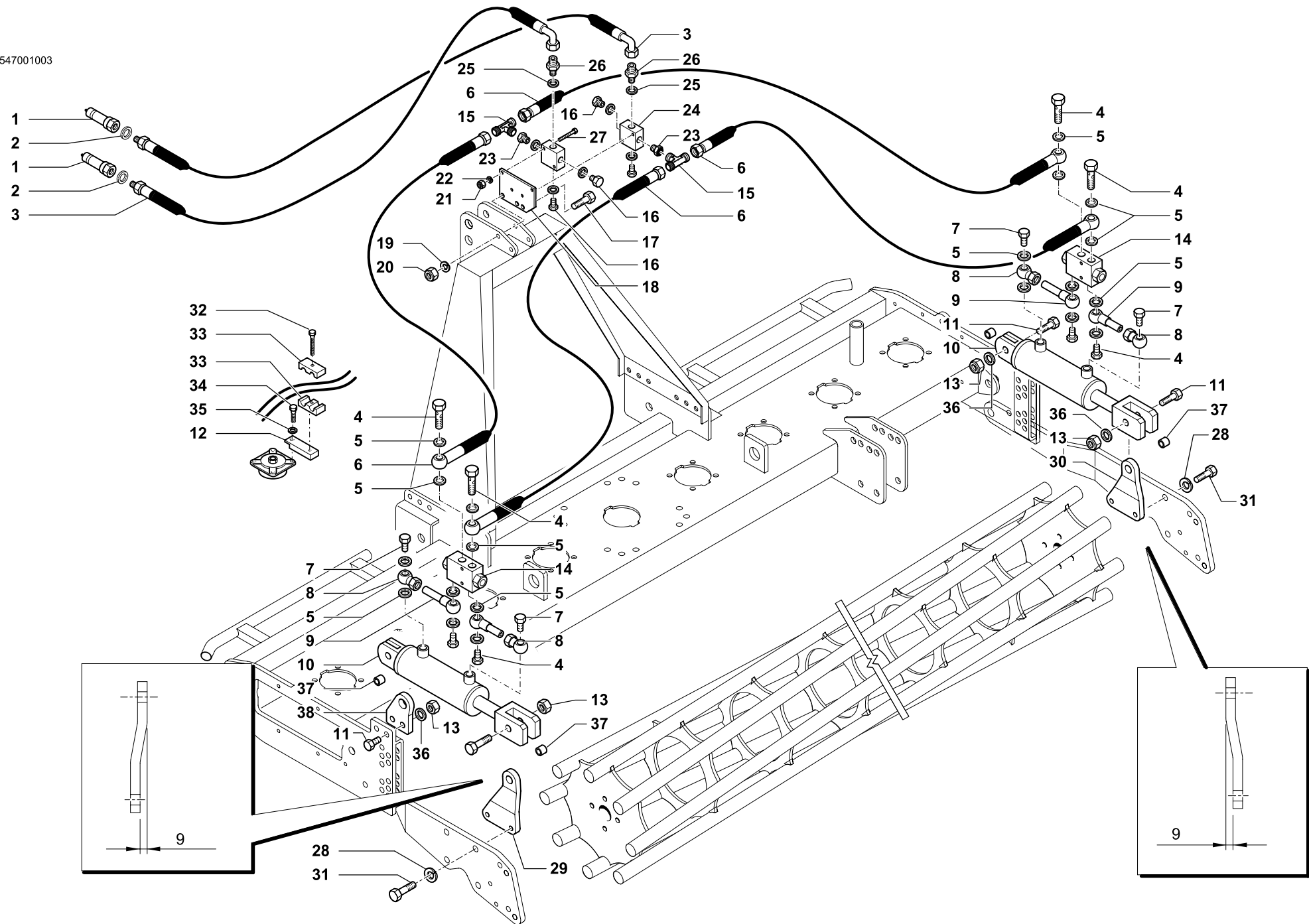
343768

Rev.

00

0303

RIF.	N. CODICE	DENOMINAZIONE	DENOMINATION	BEZEICHNUNG	DENOMINATION
1	014145	Vite	Screw	Schraube	Vis
2	011003	Grower	Grower	Federscheibe	Grower
3	014192	Vite	Screw	Schraube	Vis
4	014019	Vite	Screw	Schraube	Vis
5	911626	Raschietto laterale DX	Scraper	Schaber	Racloir
6	612372	Chiusura	Plate	Plate	Platte
7	661402	Piastra	Plate	Plate	Platte
8	911551	Braccio DX L=520	Arm	Arm	Bras
9	004054	Dado	Nut	Mutter	Ecrou
10	014386	Vite	Screw	Schraube	Vis
11	004003	Dado	Nut	Mutter	Ecrou
12	004084	Dado	Nut	Mutter	Ecrou
13	014256	Vite	Screw	Schraube	Vis
14	004072	Dado	Nut	Mutter	Ecrou
15	661403	Bussola	Bush	Buchse	Bague
16	911601	Raschietto	Scraper	Schaber	Racloir
17	013019	Spina	Pin	Stift	Goupille
18	014145	Vite	Screw	Schraube	Vis
19	661401	Fusello	Stub axle	Flansch	Fusee
20	412782	Dente (da saldare)	Tine (to be welded)	Zahn (zum schweissen)	Dent (à souder)
155	21	961940	Rullo packer	Packer roller	Rouleau packer
170		961941	Rullo packer	Packer roller	Rouleau packer
200		961942	Rullo packer	Packer roller	Rouleau packer
225		961943	Rullo packer	Packer roller	Rouleau packer
155	22	961141	Barra porta raschietti	Scratcher support	Porte-racloir
170		961143	Barra porta raschietti	Scratcher support	Porte-racloir
200		961910	Barra porta raschietti	Scratcher support	Porte-racloir
225		961911	Barra porta raschietti	Scratcher support	Porte-racloir
	23	911625	Raschietto laterale SX	Scraper	Racloir
	24	911550	Braccio SX L=520	Arm	Bras
	25	099018	Gruppo parapolvere	Dust cover	Cache anti poussière
	26	008005	Ingrassatore	Grease nipple	Graisneur
	27	421604	Supporto	Support	Support
	28	003051	Cuscinetto	Bearing	Roulement
	29	001006	Anello di arresto	Stop ring	Bague d'arret
	30	010006	Rondella	Washer	Rondelle
	31	010002	Rondella	Washer	Rondelle



IMPIANTO IDRAULICO SOLLEVAMENTO RULLO • HYDRAULIC SYSTEM FOR ROLLER LIFTING
HYDRAULISCHE ANLAGE FÜR WALZE BETAETIGUNG • INSTALLATION HYDRAULIQUE REGLAGE ROULEAUX

Tav.
Tab.
Taf. **343547**

Rev. **00 1003**



IMPIANTO IDRAULICO SOLLEVAMENTO RULLO • HYDRAULIC SYSTEM FOR ROLLER LIFTING
HYDRAULISCHE ANLAGE FÜR WALZE BETAETIGUNG • INSTALLATION HYDRAULIQUE REGLAGE ROULEAUXIM-

Tav.
Tab.
Taf. **343547**

Rev. **00** **1003**

RIF.	N. CODICE	DENOMINAZIONE	DENOMINATION	BEZEICHNUNG	DENOMINATION
1	022082	Innesto rapido	Shap-on coupling	Baionett kupplung	Joint a baionette
2	022087	Rondella	Washer	Unterlegscheibe	Rondelle
3	023064	Tubo	Hose	Schlauch	Tuyau
4	022070	Vite cava	Screw	Schraube	Vis
5	022086	Rondella	Washer	Unterlegscheibe	Rondelle
6	023060	Tubo	Hose	Schlauch	Tuyau
7	022175	Vite forata strozzata	Screw	Schraube	Vis
8	022151	Raccordo	Connection	Anschluss	Raccord
9	621736	Tubo	Hose	Schlauch	Tuyau
10	671815	Martinetto completo	Complete jack	Komplette winde	Vérin complete
	671806	Kit guarnizioni martinetto	Hydraulic ram seal group	Dichtungsgruppe	Groupe d'etancheite
11	014221	Vite	Screw	Schraube	Vis
12	612658	Staffa supporto collare	Bracket	Tragbuegel	Support collier
13	004072	Dado	Nut	Mutter	Ecrou
14	021087	Valvola di blocco	Stop valve	Sperrventil	Suopape d'arret
15	022169	Raccordo a T	Connection	Anschluss	Raccord
16	022180	Tappo	Plug	Pfropfen	Bouchon
17	014149	Vite	Screw	Schraube	Vis
18	611500	Piastrina supporto	Plate	Teller	Plateau
19	010004	Rondella	Washer	Unterlegscheibe	Rondelle
20	004084	Dado	Nut	Mutter	Ecrou
21	004083	Dado	Nut	Mutter	Ecrou
22	010015	Rondella	Washer	Unterlegscheibe	Rondelle
23	022179	Riduzione	Nipple	Nippel	Reduction
24	021059	Divisore di flusso	Flow divider	Flussteiler	Diviseur de flux
25	022077	Rondella	Washer	Unterlegscheibe	Rondelle
26	022182	Raccordo	Connection	Anschluss	Raccord
27	014122	Vite	Screw	Schraube	Vis
28	011008	Grower	Grower	Federscheibe	Grower
29	623397	Attacco sinistro (per braccio L=520)	L.H. hitch (for arm L=520)	L.H. kupplung (Arm L=520)	Attelage gauche (Bras L=520)
	623398	Attacco sinistro (per braccio L=560)	L.H. hitch (for arm L=560)	L.H. kupplung (Arm L=560)	Attelage gauche (Bras L=560)
30	623398	Attacco destro (per braccio L=520)	R.H. hitch (for arm L=520)	R.H. kupplung (Arm L=520)	Attelage droite (Bras L=520)
	623397	Attacco destro (per braccio L=560)	R.H. hitch (for arm L=560)	R.H. kupplung (Arm L=560)	Attelage droite (Bras L=560)



PIANTO IDRAULICO SOLLEVAMENTO RULLO • HYDRAULIC SYSTEM FOR ROLLER LIFTING
HYDRAULISCHE ANLAGE FÜR WALZE BETÄTIGUNG • INSTALLATION HYDRAULIQUE REGLAGE ROULEAUX

Tav.
Tab.
Taf.

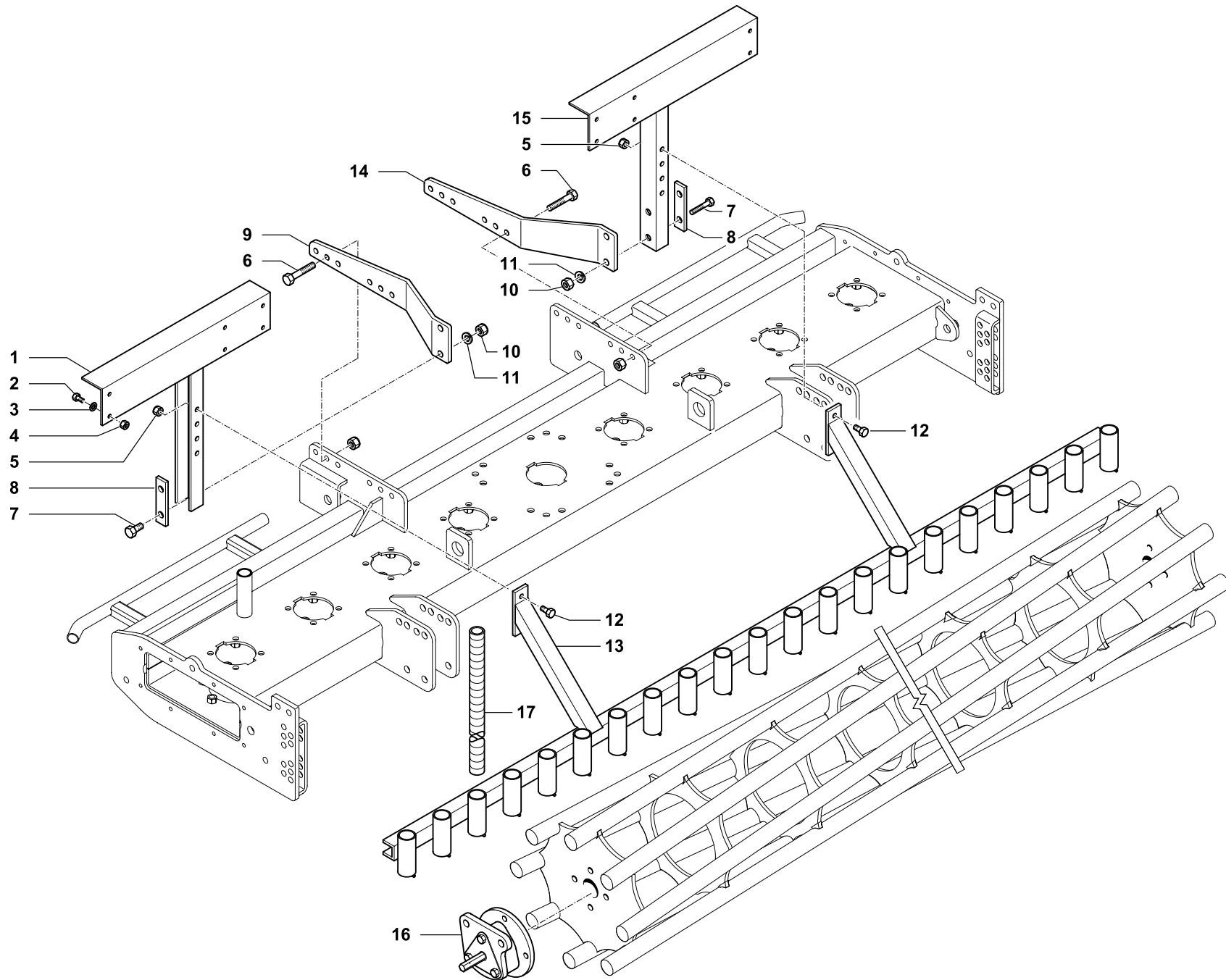
343547

Rev.

00

1003

RIF.	N. CODICE	DENOMINAZIONE	DENOMINATION	BEZEICHNUNG	DENOMINATION
31	014200	Vite	Screw	Schraube	Vis
32	014353	Vite	Screw	Schraube	Vis
33	022165	Collare fermatubo	Collar	Bund	Collier
34	014149	Vite	Screw	Schraube	Vis
35	011012	Rondella	Washer	Unterlegscheibe	Rondelle
36	010006	Rondella	Washer	Unterlegscheibe	Rondelle
37	423833	Boccola	Bushing	Buchse	Douille
38	623369	Piastra	Plate	Teller	Plateau
	671138	Kit martinetti sollevamento rullo	Hydraulic system for roller lifting	Hydraulische anlage	Installation hydraulique



ATTACCO SEMINATRICE VG • HITCH FOR SEED DRILL VG
 DRILLMASCHINEN-ANHÄNGUNG VG • ATTELAGE SEMOIR VG



Tav.	343758	Rev.	00 0405
Tab.			
Taf.			



ATTACCO SEMINATRICE VG • HITCH FOR SEED DRILL VG
DRILLMASCHINEN-ANHÄNGUNG VG • ATTELAGE SEMOIR VG

Tav.
Tab.
Taf.

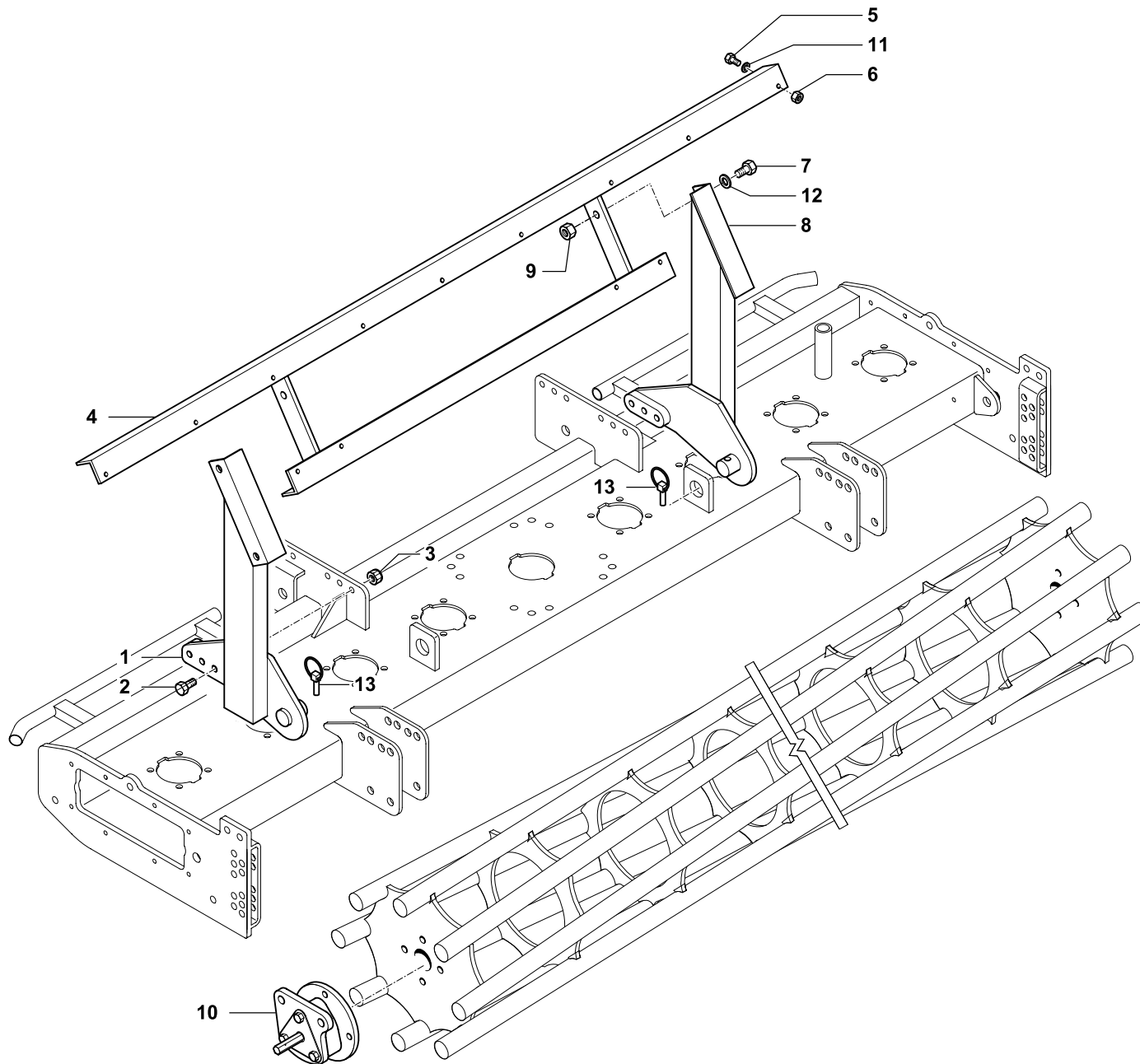
343758

Rev

00

0405

RIF.	N. CODICE	DENOMINAZIONE	DENOMINATION	BEZEICHNUNG	DENOMINATION	
1	662736	Supporto sinistro seminatrice	Support	Halterung	Support	
2	014001	Vite	Screw	Schraube	Vis	
3	010023	Rondella	Washer	Scheibe	Rondelle	
4	004055	Dado	Nut	Mutter	Ecrou	
5	004066	Dado	Nut	Mutter	Ecrou	
6	014271	Vite	Screw	Schraube	Vis	
7	014212	Vite	Screw	Schraube	Vis	
8	611549	Piatto rinforzo	Plate	Teller	Plateau	
9	662745	Supporto sinistro	Support	Halterung	Support	
10	004004	Dado	Nut	Mutter	Ecrou	
11	011004	Grower	Washer	Federring	Rondelle	
12	014008	Vite	Screw	Schraube	Vis	
200	13	662717	Barra porta tubi	Bar	Stange	Barre
250		662718	Barra porta tubi	Bar	Stange	Barre
300		662719	Barra porta tubi	Bar	Stange	Barre
14	662746	Supporto destro	Support	Halterung	Support	
15	662735	Supporto destro seminatrice	Support	Halterung	Support	
16	971514	Supporto sinistro rullo	Support	Halterung	Support	
17	022177	Tubo elastico	Hose	Schlauch	Tuyau	
200		671187	Attacco seminatrice	Hitch for seed drill	Drillmaschinen-anhängung	Attelage semoir
250		671188	Attacco seminatrice	Hitch for seed drill	Drillmaschinen-anhängung	Attelage semoir
300		671189	Attacco seminatrice	Hitch for seed drill	Drillmaschinen-anhängung	Attelage semoir



ATTACCO SEMINATRICE FGF • HITCH FOR SEED DRILL FGF
DRILLMASCHINEN-ANHÄNGUNG FGF • ATTELAGE SEMOIR FGF

Tav. Tab. Taf.	343759	Rev.	00	1003
----------------------	---------------	------	-----------	-------------



ATTACCO SEMINATRICE FGF • HITCH FOR SEED DRILL FGF
DRILLMASCHINEN-ANHÄNGUNG FGF • ATTELAGE SEMOIR FGF

Tav.
Tab.
Taf.

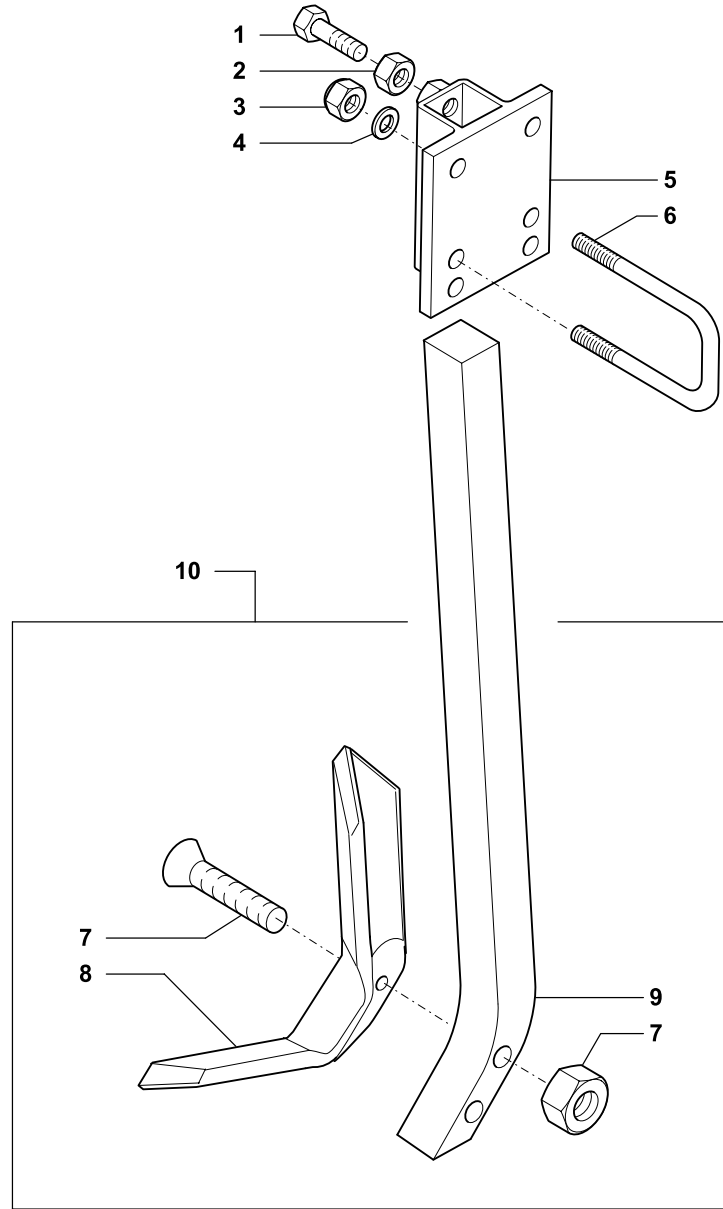
343759

Rev

00

1003

RIF.	N. CODICE	DENOMINAZIONE	DENOMINATION	BEZEICHNUNG	DENOMINATION
1	662684	Braccio sinistro	Arm	Arm	Bras
2	014271	Vite	Screw	Schraube	Vis
3	004030	Dado	Nut	Mutter	Ecrou
4	662688	Telaio supporto	Frame	Rahmen	Chassis
5	014205	Vite	Screw	Schraube	Vis
6	004049	Dado	Nut	Mutter	Ecrou
7	014210	Vite	Screw	Schraube	Vis
8	662685	Braccio destro	Arm	Arm	Bras
9	004004	Dado	Nut	Mutter	Ecrou
10	971514	Supporto sinistro rullo	Support	Halterung	Support
11	010004	Rondella	Washer	Scheibe	Rondelle
12	010002	Rondella	Washer	Unterlegscheibe	Rondelle
13	013011	Spina a scatto	Safety pin	Stift	Goupille
	671193	Attacco seminatrice	Hitch for seed drill	Drillmaschinen-anhängung	Attelage semoir





**ROMPIRACCIA • LOOSENING
SPURLOCKERER • BRISE TRACES**

Tav.
Tab.
Taf. **343772**

Rev. **00 0303**

RIF.	N. CODICE	DENOMINAZIONE	DENOMINATION	BEZEICHNUNG	DENOMINATION
1	014216	Vite	Screw	Schraube	Vis
2	004004	Dado	Nut	Mutter	Ecrou
3	004101	Dado	Nut	Mutter	Ecrou
4	010002	Rondella	Washer	Scheibe	Rondelle
5	661917	Supporto	Support	Halterung	Support
6	623649	Cavallotto	U bolt	Bügelbolzen	Crampillon
7	014354	Vite + Dado	Screw + Nut	Schraube + Mutter	Vis + Ecrou
8	099121	Vomere reversibile	Blade	Messer	Burin
9	099122	Ancora per rompitraccia	Ripper leg	Untergrundlockerer-arm	Bras du ripper
10	971510	Kit rompitraccia completo	Loosening tine kit	Satz Spurlockerer	Kit brise traces
	099120	Rompitraccia	Loosening tine	Spurlockerer	Brise traces