

FARMGARD
ROBUST MACHINERY THAT WORKS

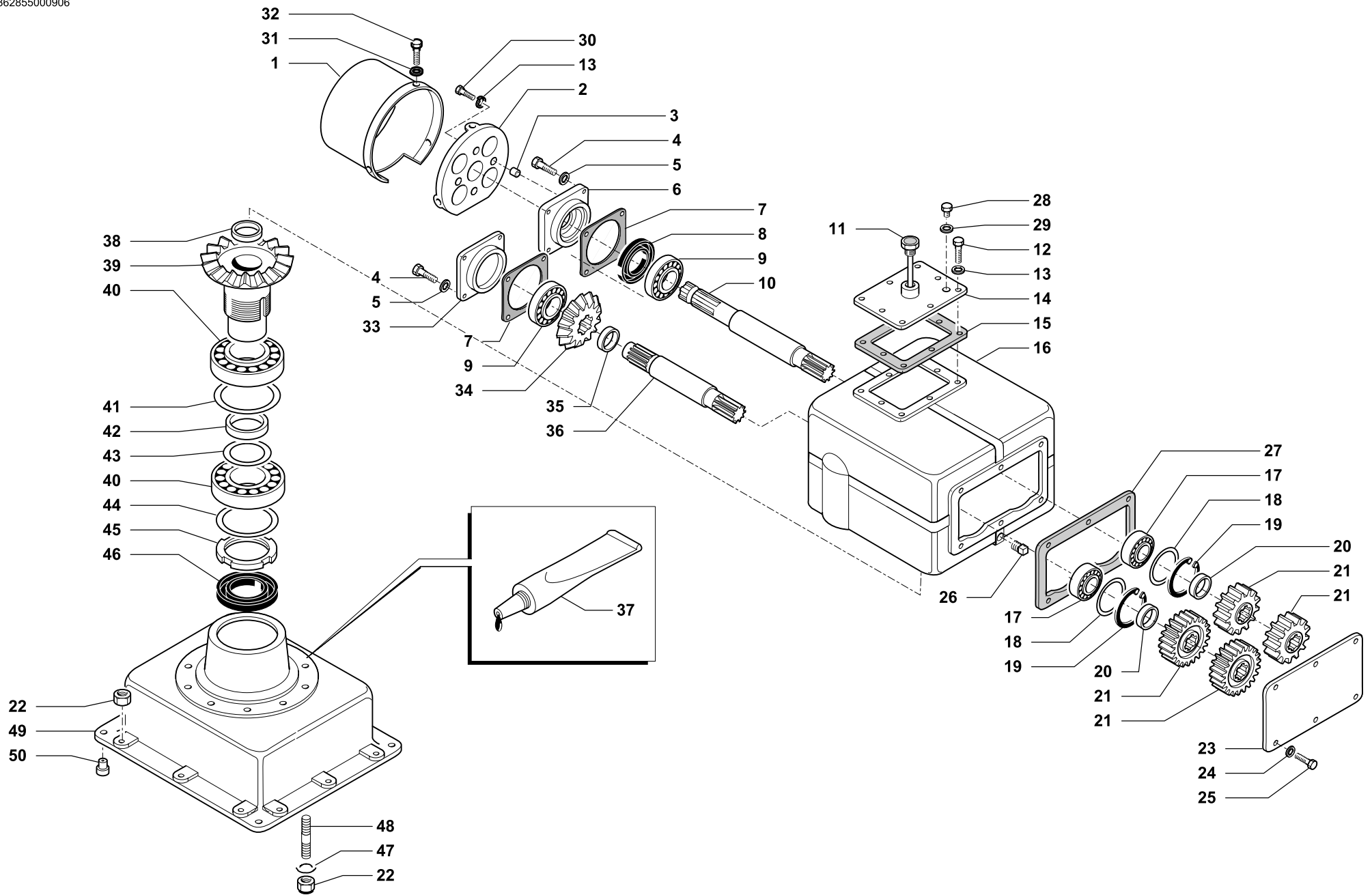


ENERGY P

CELLI SPARE PARTS REFERENCE GUIDE

FOLDING POWER HARROW





SCATOLA CAMBIO LATERALE • LATERAL GEARBOX
 GETRIEBEGEHAUSE SEITLICHEL • BOITE TRANSMISSION LATERALE

Tav. Tab. Taf.	362855	Rev.	00 0906
----------------------	---------------	------	----------------



SCATOLA CAMBIO LATERALE • LATERAL GEARBOX
GETRIEBEGEHAUSE SEITLICHEL • BOITE TRANSMISSION LATERALE

Tav.
Tab.
Taf.

362855

Rev.

00

0906

RIF.	N. CODICE	DENOMINAZIONE	DENOMINATION	BEZEICHNUNG	DENOMINATION	
1	124505	Cuffia	Guard	Schütz	Protection	
2	161500	Supporto	Support	Halterung	Support	
3	323644	Distanziale	Spacer	Distanzstueck	Entretoise	
4	014145	Vite	Screw	Schraube	Vis	
5	011003	Grower	Grower	Federscheibe	Grower	
6	421606	Coperchio	Cover	Deckel	Couvercle	
7	424600	Guarnizione	Gasket	Dichtring	Joint	
8	007152	Paraolio	Oil seal	Simmerring	Joint huile	
9	003044S	Cuscinetto	Bearing	Kugellager	Roulement	
10	423787	Albero presa di forza 1"3/4Z20	Shaft	Welle	Arbre	
11	022164	Tappo 3/4	Plug	Verschluss	Bouchon	
12	014227	Vite	Screw	Schraube	Vis	
13	011002	Grower	Grower	Federscheibe	Grower	
14	461073	Coperchio	Cover	Deckel	Couvercle	
15	424601	Guarnizione	Gasket	Dichtring	Joint	
250/350	16	621600	Scatola rotazione destra	Housing	Gehäuse	Bôte
300/400		621604	Scatola rotazione sinistra	Housing	Gehäuse	Bôte
17	003112S	Cuscinetto	Bearing	Kugellager	Roulement	
18	111504	Serie spessori	Set spacers	Beilagscheiben	Serie d'épaisseurs	
19	001033	Anello di arresto	Stop ring	Sperring	Bague d'arret	
20	423715	Distanziale	Spacer	Distanzstueck	Entretoise	
21	422600	Ingranaggio Z 18	Gear	Zahnrad	Engrenage	
	422603	Ingranaggio Z 21	Gear	Zahnrad	Engrenage	
	422609	Ingranaggio Z 17	Gear	Zahnrad	Engrenage	
	422610	Ingranaggio Z 22	Gear	Zahnrad	Engrenage	
22	004079	Dado	Nut	Mutter	Ecrou	
23	421603	Coperchio cambio	Cover	Deckel	Couvercle	
24	011012	Grower	Grower	Federscheibe	Grower	
25	014205	Vite	Screw	Schraube	Vis	
26	022009	Tappo 1/2 gas	Plug	Verschluss	Bouchon	
27	424602	Guarnizione	Gasket	Dichtring	Joint	
28	022153	Tappo	Plug	Verschluss	Bouchon	
29	022086	Rondella	Washer	Scheibe	Rondelle	



SCATOLA CAMBIO LATERALE • LATERAL GEARBOX
GETRIEBEGEHAUSE SEITLICHEL • BOITE TRANSMISSION LATERALE

Tav.
Tab.
Taf.

362855

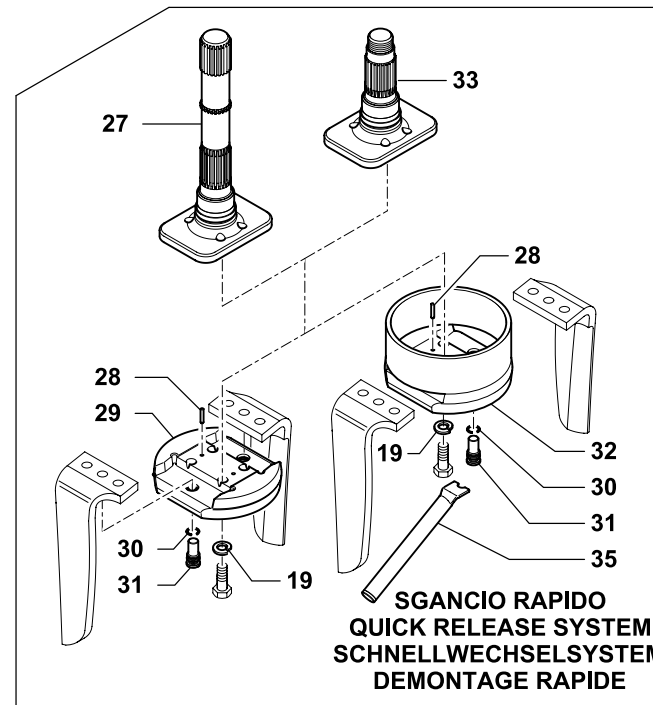
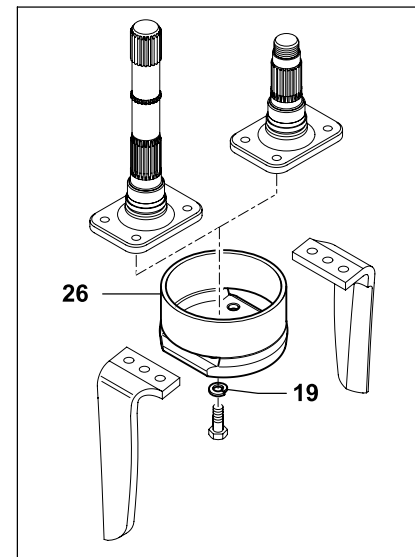
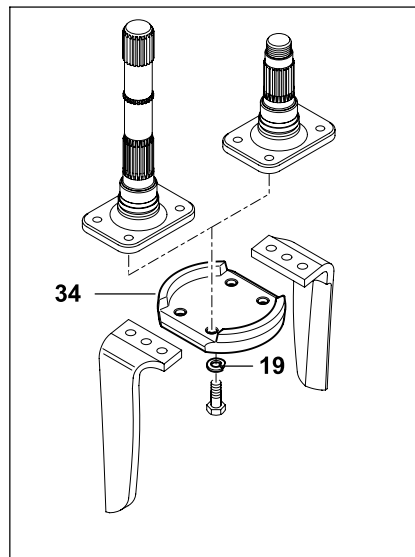
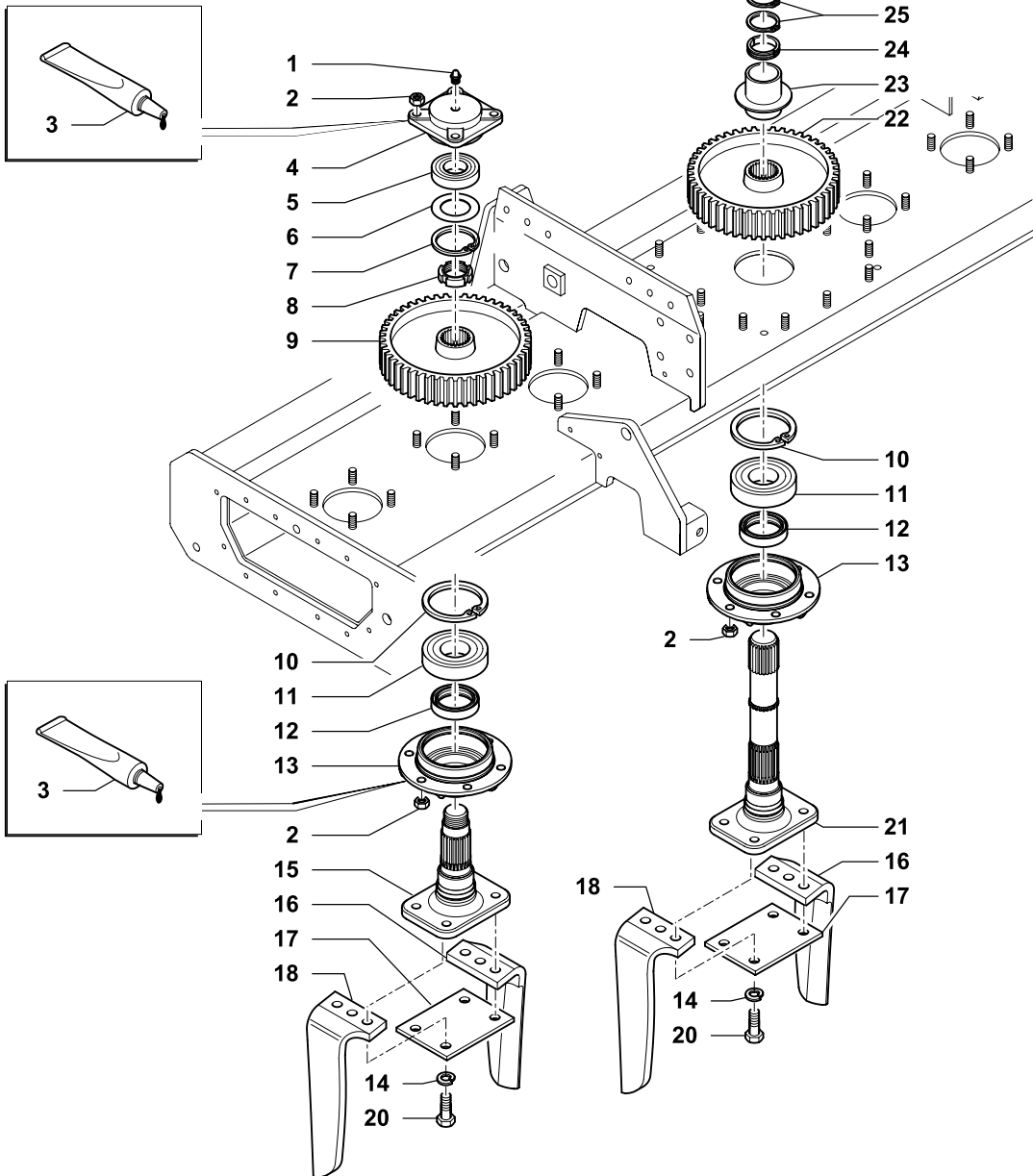
Rev.

00

0906

RIF.	N. CODICE	DENOMINAZIONE	DENOMINATION	BEZEICHNUNG	DENOMINATION
30	014278	Vite	Screw	Schraube	Vis
31	010023	Rondella	Washer	Scheibe	Rondelle
32	014284	Vite	Screw	Schraube	Vis
33	421602	Coperchio	Cover	Deckel	Couvercle
34	422615	Pignone conico Z 15	Pinion shaft	Arbre pignon	Ritzelwelle
35	423537	Distanziale	Spacer	Distanzstueck	Entretoise
36	423711	Albero	Shaft	Welle	Arbre
37	094002	Sigillante	Glue	Klebstoff	Colle
38	611600	Tappo	Plug	Verschluss	Bouchon
39	622600	Corona conica Z=26	Crownwheel	Zahnkranz	Couronne
40	003132S	Cuscinetto	Bearing	Kugellager	Roulement
41	623633	Anello	Ring	Ring	Bague
42	623601	Anello	Ring	Ring	Bague
43	611601	Serie spessori	Set spacers	Beilagscheiben	Serie d'epaisseurs
44	611605	Spessore	Shim	Scheibe	Epaisseur
45	005015	Ghiera	Ring nut	Nutmutter	Collier
46	007040	Paraolio	Oil seal	Simmerring	Joint huile
47	011013	Rosetta ondulata	Washer	Scheibe	Rondelle
48	014297	Vite	Screw	Schraube	Vis
49	621601	Lanterna porta scatola	Main rotor housing	Hauptwelle halter	Carter boîte de vitesse
50	623604	Spina di centraggio	Pin	Stift	Goupille

361853000906

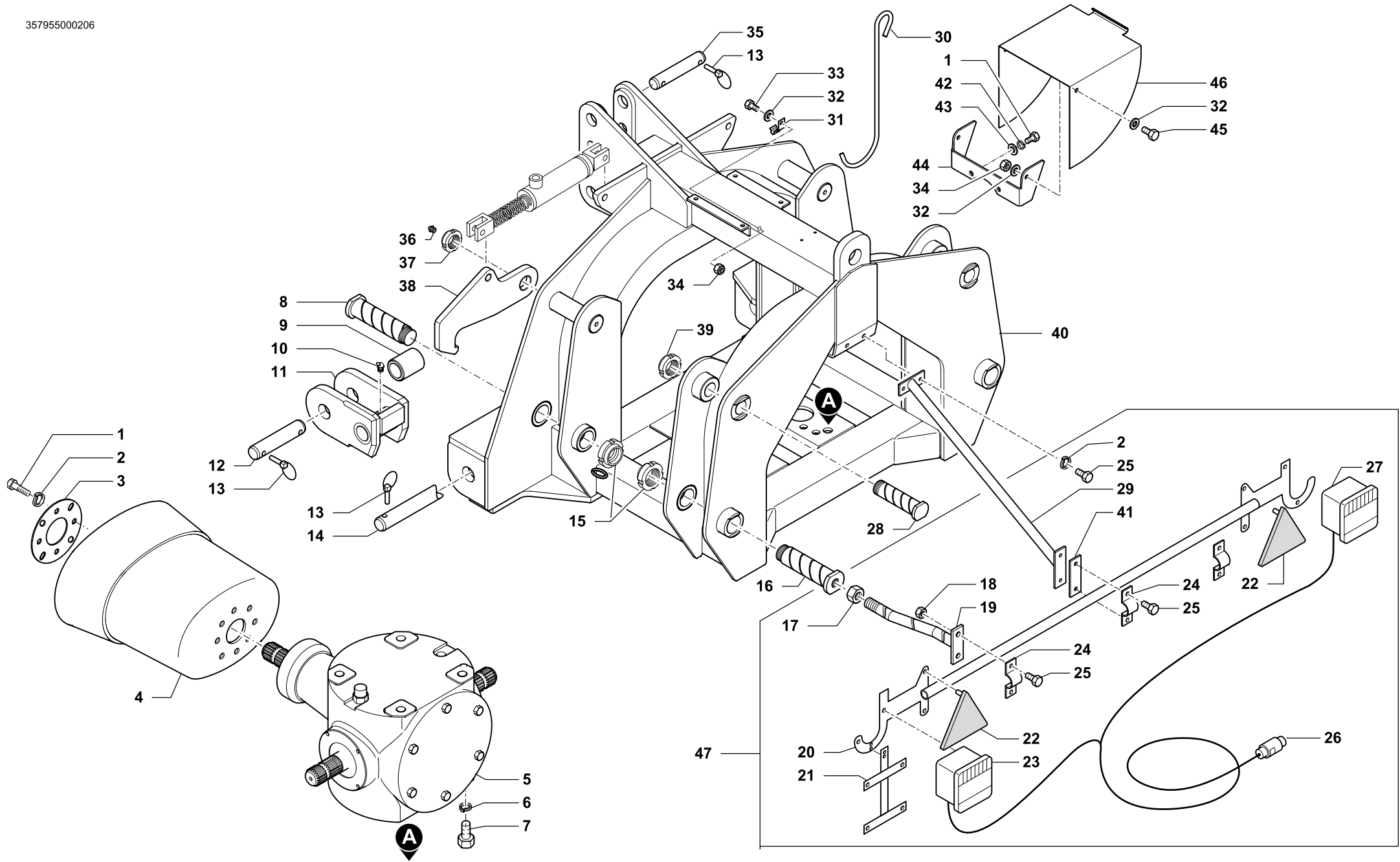


TRASMISSIONE • TRANSMISSION
UBERTRAGUNG • TRANSMISSION

Tav. Tab. Taf.	361853	Rev.	00 0906
----------------------	---------------	------	----------------



RIF.	N. CODICE	DENOMINAZIONE	DENOMINATION	BEZEICHNUNG	DENOMINATION
1	008009	Ingrassatore	Grease nipple	Fettbuechse	Graisneur
2	004087	Dado	Nut	Mutter	Ecrou
3	094005	Sigillante	Glue	Klebstoff	Colle
4	621603	Supporto superiore	Support	Halterung	Support
5	003138S	Cuscinetto	Bearing	Kugellager	Roulement
6	623634	Anello di protezione	Stop ring	Sperring	Bague d'arret
7	001007	Anello di arresto	Stop ring	Sperring	Bague d'arret
8	005024	Ghiera	Ring nut	Nutmutter	Collier
9	622602	Ingranaggio laterale Z49	Gear	Zahnrad	Engrenage
10	001034	Anello di arresto	Stop ring	Sperring	Bague d'arret
11	003006S	Cuscinetto	Bearing	Kugellager	Roulement
12	007240	Paraolio	Oil seal	Simmerring	Joint huile
13	632610	Supporto inferiore	Support	Halterung	Support
14	011005	Grower	Washer	Federring	Rondelle
15	622906	Albero rotore laterale	Side rotor shaft	Seitenrotorwelle	Arbre rotor lateral
16	622603	Coltello destro	Blade	Rechtes	Couteau
17	611604	Supporto coltelli	Support	Halterung	Support
18	622604	Coltello sinistro	Blade	Rechtes	Couteau
19	011045	Rosetta	Washer	Scheibe	Rondelle
20	014261	Vite	Screw	Schraube	Vis
21	622625	Albero rotore centrale	Central rotor shaft	Zentralrotorwelle	Arbre rotor central
22	622601	Ingranaggio centrale Z49	Gear	Zahnrad	Engrenage
23	623615	Bussola	Bush	Buchse	Bague
24	623603	Anello di arresto	Stop ring	Sperring	Bague d'arret
25	001008	Anello di arresto	Stop ring	Sperring	Bague d'arret
26	661146	Supporto coltelli anting. + Parasassi	Tines holder + stones protection	Messerträger + Steinschutz	Support couteaux + protèges pierres
27	622635	Albero rotore centrale	Central rotor shaft for tines	Zentralrotorwelle	Arbre rotor central
28	013045	Spina	Pin	Stift	Goupille
29	632500	Supporto coltelli	Tines support	Messerträger	Support couteaux
30	001149	Anello di arresto	Stop ring	Sperring	Bague d'arret
31	623697	Perno sgancio rapido	Pin for tines quick release system	Bolzen für Schnellwechselsystem	Axe démontage rapide
32	661147	Supporto coltelli anting. + Parasassi	Tines support + stones protection	Messerträger + Steinschutz	Support couteaux + protège pierres
33	622806	Albero rotore laterale	Side rotor shaft	Seitenrotorwelle	Arbre rotor lateral
34	632602	Supporto coltelli antingolfamento	Support	Halterung	Support
35	611495	Leva sblocca coltelli	Unlocking tines bar	Hebel für Schnellwechselsystem	Clef de démontage



TELAIO CENTRALE • CENTER FRAME
MITTELRAHMEN • CHASSIS CENTRAL

Tav. Tab. Taf.	357955	Rev.	01 0906
----------------------	---------------	------	----------------



TELAIO CENTRALE • CENTER FRAME
MITTELRAHMEN • CHASSIS CENTRAL

Tav.
Tab.
Taf.

357955

Rev.

01

0906

RIF.	N. CODICE	DENOMINAZIONE	DENOMINATION	BEZEICHNUNG	DENOMINATION
1	014007	Vite	Screw	Schraube	Vis
2	011002	Grower	Grower	Federscheibe	Grower
3	612727	Flangia	Flange	Flansch	Flasque
4	099140	Cuffia	Guard	Schutz	Protection
5	471441	Scatola	Housing	Gehäuse	Bôte
6	011005	Grower	Grower	Federscheibe	Grower
7	014326	Vite	Screw	Schraube	Vis
8	623698	Perno	Pivot	Bolzen	Axe
9	613107	Boccola	Bushing	Buchse	Douille
10	008005	Ingrassatore	Grease nipple	Fettbuechse	Graisneur
11	661101	Attacco oscillante sinistro (3° cat.)	Swinging arm (cat.III)	Pendelnder Anschluss (Kat.III)	Attelage oscillant (3°cat.)
	661111	Attacco oscillante destro (3° cat.)	Swinging arm (cat.III)	Pendelnder Anschluss (Kat.III)	Attelage oscillant (3°cat.)
12	723606	Perno	Pivot	Bolzen	Axe
13	013011	Spina a scatto	Pin	Stift	Goupille
14	621735	Perno	Pivot	Bolzen	Axe
15	005008	Ghiera	Ring nut	Nutmutter	Collier
16	623699	Perno	Pivot	Bolzen	Axe
17	004069	Dado	Nut	Mutter	Ecrou
18	004084	Dado	Nut	Mutter	Ecrou
19	462172	Attacco barra portafanali	Bar connection	Stangenanschluss	Attelage barre
20	027006	Barra portafanali	Bar	Stange	Barre
21	027007	Portatarga	Number plate holder	Schildrahmen	Porte plaque
22	027002	Catadiottro	Reflector	Rückstrahler	Catadioptré
23	027003	Fanale sinistro	Left Light	Links Scheinwerfer	Gauche Feu
24	612941	Piastra ferma tubo	Plate	Teller	Plateau
25	014149	Vite	Screw	Schraube	Vis
26	027005	Cavo alimentazione	Power supply wire	Zufuhrkabel	Cable alimentation
27	027004	Fanale destro	Right light	Rechts Scheinwerfer	Droit Feu
28	613128	Perno	Pivot	Bolzen	Axe
29	661149	Barra di attacco centrale	Bar	Stange	Barre
30	523652	Gancio cardano 402 mm	Drive shaft hook	Gelenkwelle aufhaengung	Crochet
31	611728	Staffa gancio	Flask	Pratze	Bride
32	010023	Rondella	Washer	Unterlegscheibe	Rondelle
33	014005	Vite	Screw	Schraube	Vis



TELAIO CENTRALE • CENTER FRAME
MITTELRAHMEN • CHASSIS CENTRAL

Tav.
Tab.
Taf.

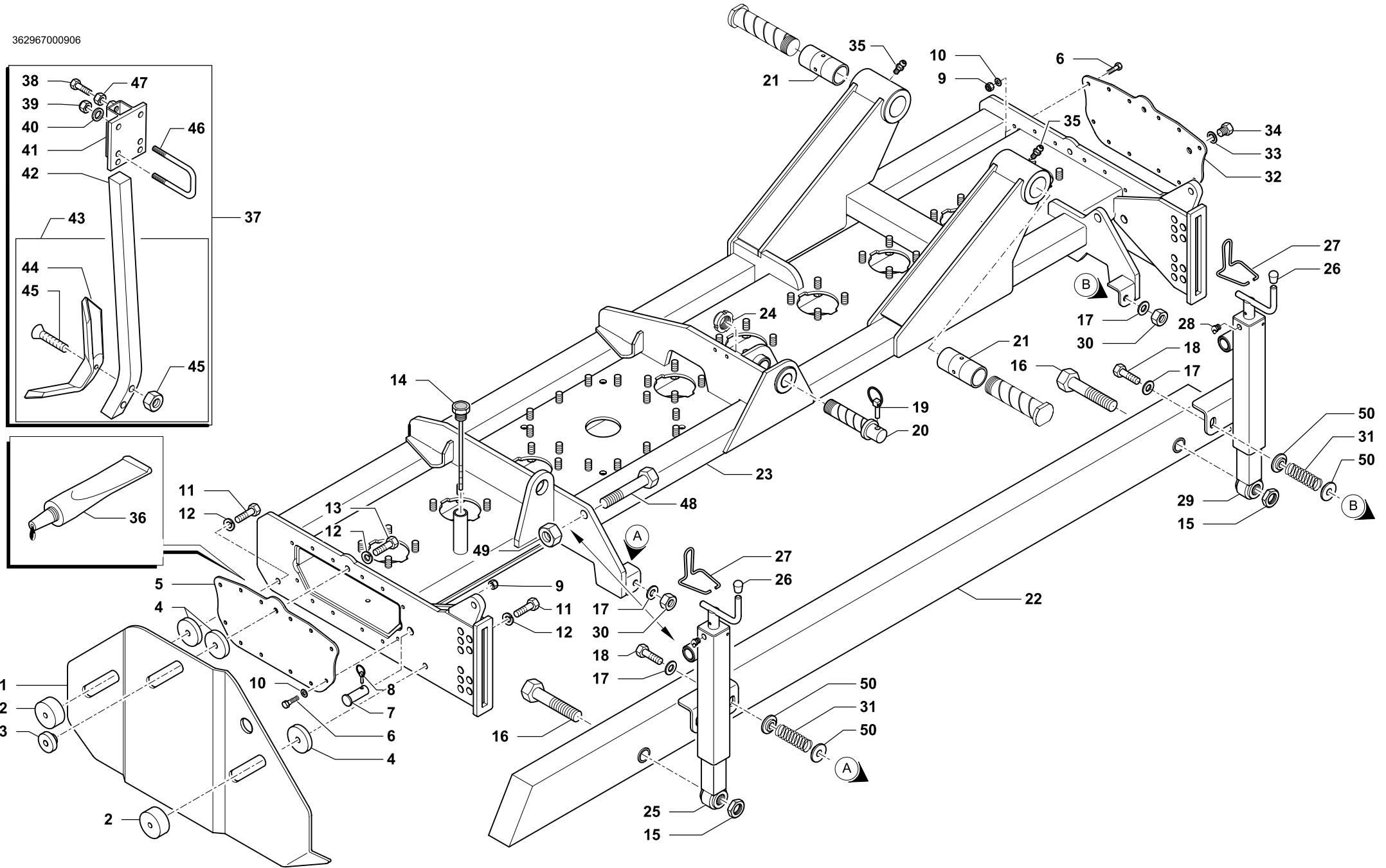
357955

Rev.

01

0906

RIF.	N. CODICE	DENOMINAZIONE	DENOMINATION	BEZEICHNUNG	DENOMINATION
34	004055	Dado	Nut	Mutter	Ecrou
35	723630	Perno	Pivot	Bolzen	Axe
36	008001	Ingrassatore	Grease nipple	Fettbuechse	Graisneur
37	005006	Ghiera	Ring nut	Nutmutter	Collier
38	611414	Gancio di bloccaggio	Hook	Haken	Crochet
39	005007	Ghiera	Ring nut	Nutmutter	Collier
40	661104	Castello 3° punto	Third point	Hebe boch	Bati 3 point
41	612943	Spessore	Shim	Beilagescheibe	Epaisseur
42	011032	Grower	Grower	Federscheibe	Grower
43	010004	Rondella	Washer	Unterlegscheibe	Rondelle
44	411428	Supporto	Support	Halterung	Suppo
45	014001	Vite	Screw	Schraube	Vis
46	411429	Protezione	Protection	Schutz	Protection
47	971646	Kit barra portafanali	Bar	Stange	Barre



TELAIO SINISTRO • LEFT FRAME
L.H. RAHMEN • CHASSIS GAUCHE

Tav. Tab. Taf.	362967	Rev.	00 0906
----------------------	---------------	------	----------------



TELAIO SINISTRO • LEFT FRAME
L.H. RAHMEN • CHASSIS GAUCHE

Tav.
Tab.
Taf.

362967

Rev.

00 0906

RIF.	N. CODICE	DENOMINAZIONE	DENOMINATION	BEZEICHNUNG	DENOMINATION
1	612385	Laterale sinistro	L.H. side shield	L.H. seitlicher schild	Lateral gauche
2	623411	Blocchetto di fissaggio parazole	Stop plate	Schweisplatten	Bloc de fixation
3	623412	Blocchetto di fissaggio parazole	Stop plate	Schweisplatten	Bloc de fixation
4	623418	Rondella	Washer	Scheibe	Rondelle
5	612598	Coperchio cofano	Cover	Deckel	Couvercle
6	014245	Vite	Screw	Schraube	Vis
7	623563	Perno fulcro braccio rullo	Pivot	Bolzen	Axe
8	013023	Spina a scatto	Pin	Stift	Goupille
9	004055	Dado	Nut	Mutter	Ecrou
10	010023	Rondella	Washer	Scheibe	Rondelle
11	014224	Vite	Screw	Schraube	Vis
12	011007	Grower	Washer	Federring	Rondelle
13	014251	Vite	Screw	Schraube	Vis
14	022164	Tappo con asta	Plug	Verschluss	Bouchon
15	004006	Dado	Nut	Mutter	Ecrou
16	014447	Vite	Screw	Schraube	Vis
17	010004	Rondella	Washer	Scheibe	Rondelle
18	014356	Vite	Screw	Schraube	Vis
19	013011	Spina a scatto	Pin	Stift	Goupille
20	423868	Perno fulcro martinetto	Pivot	Bolzen	Axe
21	423248	Bronzina	Bushing	Buchse	Douille
500	22	662825	Barra livellatrice	Levelling bar	Barre niveleuse
600		662826	Barra livellatrice	Levelling bar	Barre niveleuse
500	23	662946	Telaio sinistro	Left frame	Chassis gauche
600		662948	Telaio sinistro	Left frame	Chassis gauche
24	005007	Ghiera	Ring nut	Nutmutter	Collier
25	662917	Vite di regolazione sinistra	Threaded bar	Spindel	Vis de réglage
26	022157	Tappo goccia	Plug	Verschluss	Bouchon
27	612891	Molla di bloccaggio	Spring	Feder	Ressort de blocage
28	008005	Ingrassatore	Grease nipple	Fettbuechse	Graisneur
29	662918	Vite di regolazione destra	Threaded bar	Spindel	Vis de réglage
30	004059	Dado	Nut	Mutter	Ecrou
31	623624	Molla	Spring	Feder	Ressort



TELAIO SINISTRO • LEFT FRAME
L.H. RAHMEN • CHASSIS GAUCHE

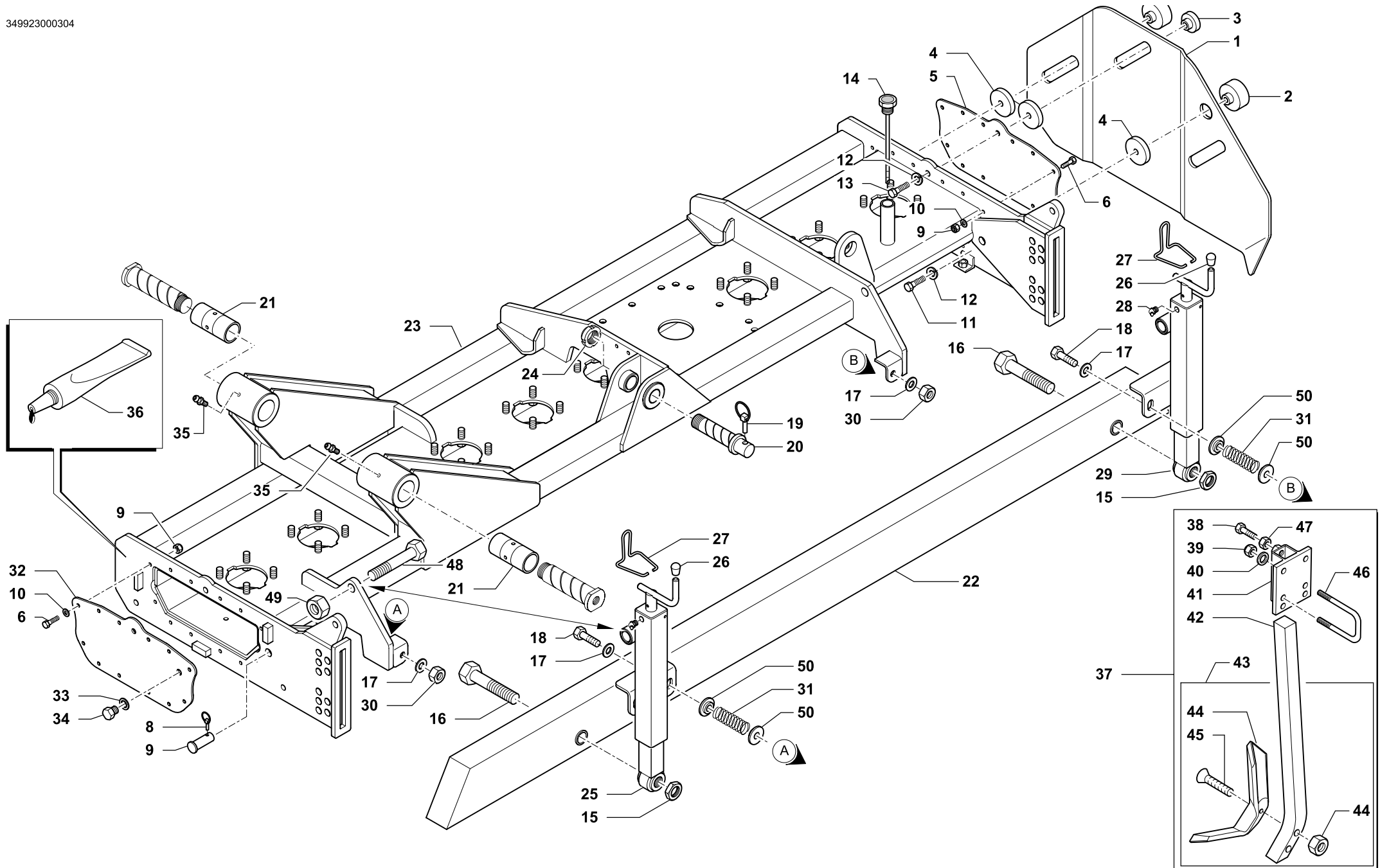
Tav.
Tab.
Taf.

362967

Rev.

00 0906

RIF.	N. CODICE	DENOMINAZIONE	DENOMINATION	BEZEICHNUNG	DENOMINATION
32	612599	Coperchio laterale interno	Cover	Deckel	Couvercle
33	022086	Rondella	Washer	Scheibe	Rondelle
34	022180	Tappo	Plug	Verschluss	Bouchon
35	008007	Ingrassatore	Grease nipple	Fettbuechse	Graisser
36	094006	Sigillante	Glue	Klebstoff	Colle
37	971509	Rompitraccia completo	Loosening tine	Spurspurlockerer	Brise traces
38	014246	Vite	Screw	Schraube	Vis
39	004054	Dado	Nut	Mutter	Ecrou
40	010002	Rondella	Washer	Scheibe	Rondelle
41	661917	Supporto	Support	Halterung	Support
42	099122	Ancora per rompittraccia	Ripper leg	Untergrundlockerer-arm	Bras du ripper
43	099120	Rompitraccia	Loosening tine	Spurspurlockerer	Brise traces
44	099121	Vomere reversibile	Blade	Messer	Burin
45	014354	Vite + Dado	Screw + Nut	Schraube + Mutter	Vis + Ecrou
46	623749	Cavallotto	U bolt	Bügelbolzen	Crampillon
47	004004	Dado	Nut	Mutter	Ecrou
48	014450	Vite	Screw	Schraube	Vis
49	004042	Dado	Nut	Mutter	Ecrou
50	623626	Rondella molla	Washer	Scheibe	Rondelle



TELAIO DESTRO • RIGHT FRAME
R.H. RAHMEN • CHASSIS DROITE

Tav. Tab. Taf.	362968	Rev.	00 0906
----------------------	---------------	------	----------------



TELAIO DESTRO • RIGHT FRAME
R.H. RAHMEN • CHASSIS DROITE

Tav.
Tab.
Taf. **362968**

Rev. **00 0906**

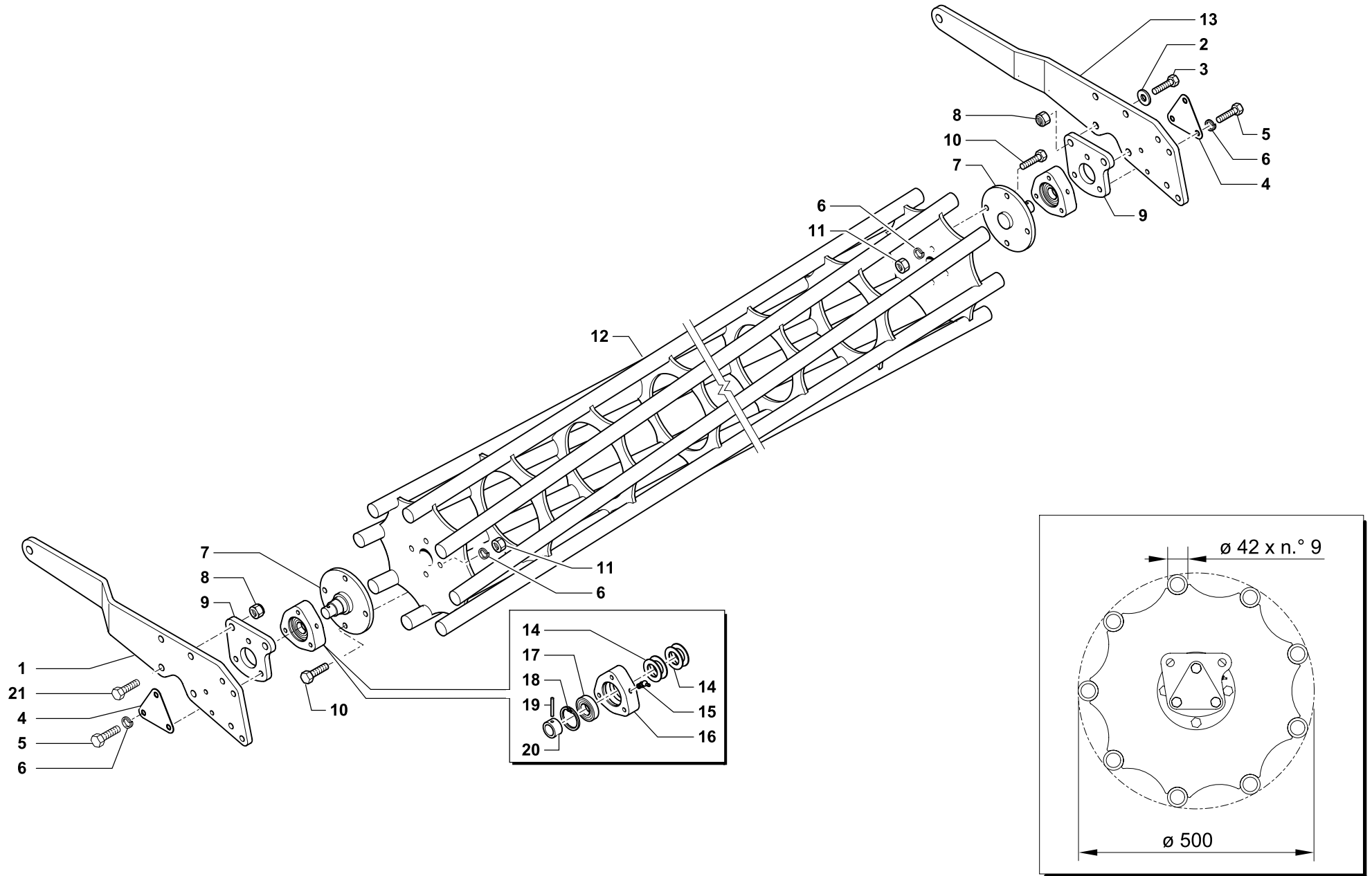
RIF.	N. CODICE	DENOMINAZIONE	DENOMINATION	BEZEICHNUNG	DENOMINATION
1	612386	Laterale destro	R.H. side shield	R.H. seitlicher schild	Lateral droite
2	623411	Blocchetto di fissaggio parazole	Stop plate	Schweisplatten	Bloc de fixation
3	623412	Blocchetto di fissaggio parazole	Stop plate	Schweisplatten	Bloc de fixation
4	623418	Rondella	Washer	Scheibe	Rondelle
5	612598	Coperchio cofano	Cover	Deckel	Couvercle
6	014245	Vite	Screw	Schraube	Vis
7	623563	Perno fulcro braccio rullo	Pivot	Bolzen	Axe
8	013023	Spina a scatto	Pin	Stift	Goupille
9	004055	Dado	Nut	Mutter	Ecrou
10	010023	Rondella	Washer	Scheibe	Rondelle
11	014224	Vite	Screw	Schraube	Vis
12	011007	Grower	Washer	Federring	Rondelle
13	014251	Vite	Screw	Schraube	Vis
14	022164	Tappo con asta	Plug	Verschluss	Bouchon
15	004044	Dado	Nut	Mutter	Ecrou
16	014447	Vite	Screw	Schraube	Vis
17	010004	Rondella	Washer	Scheibe	Rondelle
18	014356	Vite	Screw	Schraube	Vis
19	013011	Spina a scatto	Pin	Stift	Goupille
20	423868	Perno fulcro martinetto	Pivot	Bolzen	Axe
21	423248	Bronzina	Bushing	Buchse	Douille
500	22	662825	Barra livellatrice	Levelling bar	Barre niveleuse
600		662826	Barra livellatrice	Levelling bar	Barre niveleuse
500	23	662947	Telaio destro	Right frame	Chassis droite
600		662949	Telaio destro	Right frame	Chassis droite
24	005007	Ghiera	Ring nut	Nutmutter	Collier
25	662917	Vite di regolazione sinistra	Threaded bar	Spindel	Vis de réglage
26	022157	Tappo goccia	Plug	Verschluss	Bouchon
27	612891	Molla di bloccaggio	Spring	Feder	Ressort de blocage
28	008005	Ingrassatore	Grease nipple	Fettbuechse	Graisneur
29	662918	Vite di regolazione destra	Threaded bar	Spindel	Vis de réglage
30	004059	Dado	Nut	Mutter	Ecrou
31	623624	Molla	Spring	Feder	Ressort



TELAIO DESTRO • RIGHT FRAME
R.H. RAHMEN • CHASSIS DROITE

Tav. 362968 Rev. 00 0906
Tab. Taf.

RIF.	N. CODICE	DENOMINAZIONE	DENOMINATION	BEZEICHNUNG	DENOMINATION
32	612599	Coperchio laterale interno	Cover	Deckel	Couvercle
33	022086	Rondella	Washer	Scheibe	Rondelle
34	022180	Tappo	Plug	Verschluss	Bouchon
35	008007	Ingrassatore	Grease nipple	Fettbuechse	Graisser
36	094006	Sigillante	Glue	Klebstoff	Colle
37	971509	Rompitraccia completo	Loosening tine	Spurspurlockerer	Brise traces
38	014246	Vite	Screw	Schraube	Vis
39	004054	Dado	Nut	Mutter	Ecrou
40	010002	Rondella	Washer	Scheibe	Rondelle
41	661917	Supporto	Support	Halterung	Support
42	099122	Ancora per rompitraccia	Ripper leg	Untergrundlockerer-arm	Bras du ripper
43	099120	Rompitraccia	Loosening tine	Spurspurlockerer	Brise traces
44	099121	Vomere reversibile	Blade	Messer	Burin
45	014354	Vite + Dado	Screw + Nut	Schraube + Mutter	Vis + Ecrou
46	623749	Cavallotto	U bolt	Bügelbolzen	Crampillon
47	004004	Dado	Nut	Mutter	Ecrou
48	014450	Vite	Screw	Schraube	Vis
49	004042	Dado	Nut	Mutter	Ecrou
50	623626	Rondella molla	Washer	Scheibe	Rondelle





RULLO GABBIA Ø 500 SINISTRO • L.H. CAGE ROLLER Ø 500
KÄFIGWALZE Ø 500 LINKS • ROULEAU CAGE Ø 500 GAUCHE

Tav.
Tab.
Taf.

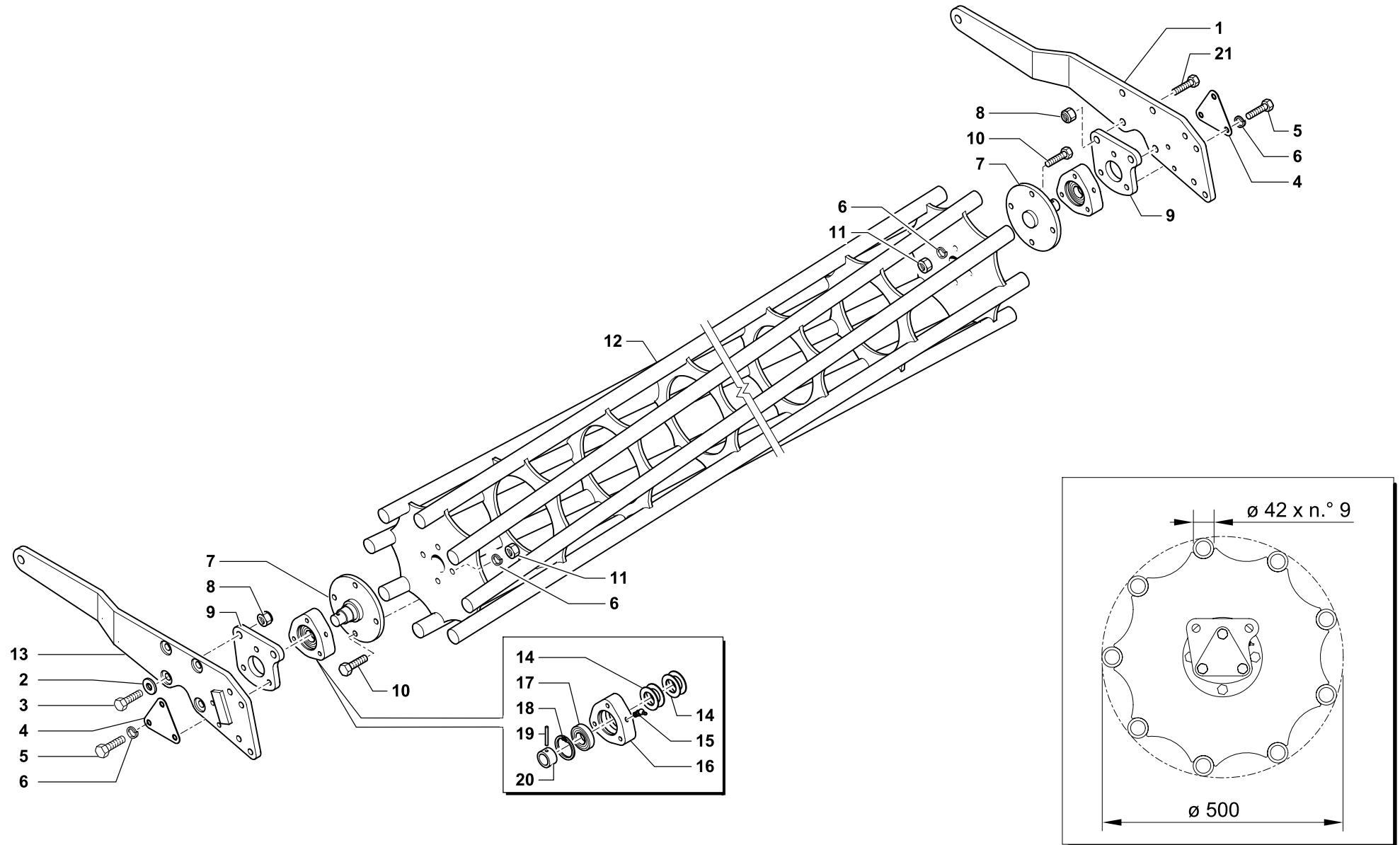
362178

Rev.

00

0906

RIF.	N. CODICE	DENOMINAZIONE	DENOMINATION	BEZEICHNUNG	DENOMINATION
1	911572	Braccio esterno sinistro	Arm	Arm	Bras
2	010006	Rondella	Washer	Unterlegscheibe	Rondelle
3	014192	Vite	Screw	Schraube	Vis
4	612372	Chiusura	Plate	Plate	Platte
5	014145	Vite	Screw	Schraube	Vis
6	011003	Grower	Grower	Federscheibe	Grower
7	661401	Fusello	Stub axle	Flansch	Fusee
8	004072	Dado	Nut	Mutter	Ecrou
9	661402	Piastra	Plate	Plate	Platte
10	014254	Vite	Screw	Schraube	Vis
11	004030	Dado	Nut	Mutter	Ecrou
500	12	961952	Rullo gabbia	Cage roller	Rouleau cage
600		961954	Rullo gabbia	Cage roller	Rouleau cage
13	911582	Braccio interno sinistro	Arm	Arm	Bras
14	099018	Gruppo parapolvere	Dust cover	Staubdeckel	Cache anti poussière
15	008005	Ingrassatore	Grease nipple	Fettbuechse	Graisneur
16	421604	Supporto	Support	Halterung	Support
17	003051	Cuscinetto	Bearing	Kugellager	Roulement
18	001006	Anello di arresto	Stop ring	Sperring	Bague d'arret
19	013019	Spina	Pin	Stift	Goupille
20	661403	Bussola	Bush	Buchse	Bague
21	014198	Vite	Screw	Schraube	Vis
500		998232	Rullo gabbia + Supporti	Cage roller + Support	Rouleau cage + Support
600		998234	Rullo gabbia + Supporti	Cage roller + Support	Rouleau cage + Support



RULLO GABBIA Ø 500 DESTRO • R.H. CAGE ROLLER Ø 500
 KÄFIGWALZE Ø 500 RECHTS • ROULEAU CAGE Ø 500 DROITE

Tav. Tab. Taf.	362179	Rev.	00 0906
----------------------	---------------	------	----------------



RULLO GABBIA Ø 500 DESTRO • R.H. CAGE ROLLER Ø 500
KÄFIGWALZE Ø 500 RECHTS • ROULEAU CAGE Ø 500 DROITE

Tav.
Tab.
Taf.

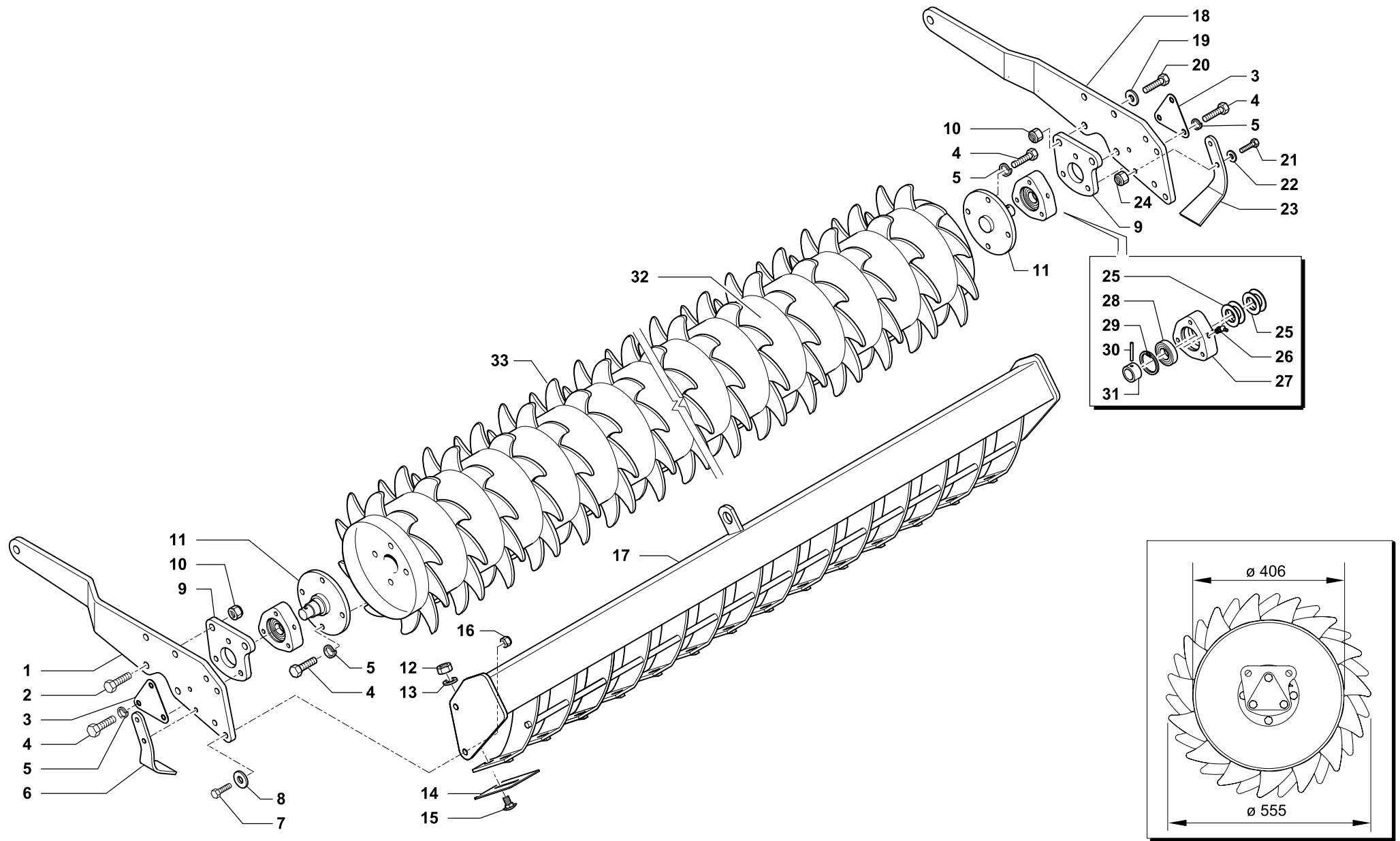
362179

Rev.

00

0906

RIF.	N. CODICE	DENOMINAZIONE	DENOMINATION	BEZEICHNUNG	DENOMINATION
1	911573	Braccio esterno destro	Arm	Arm	Bras
2	010006	Rondella	Washer	Unterlegscheibe	Rondelle
3	014192	Vite	Screw	Schraube	Vis
4	612372	Chiusura	Plate	Plate	Platte
5	014145	Vite	Screw	Schraube	Vis
6	011003	Grower	Grower	Federscheibe	Grower
7	661401	Fusello	Stub axle	Flansch	Fusee
8	004072	Dado	Nut	Mutter	Ecrou
9	661402	Piastra	Plate	Plate	Platte
10	014254	Vite	Screw	Schraube	Vis
11	004030	Dado	Nut	Mutter	Ecrou
500	12	961952	Rullo gabbia	Cage roller	Rouleau cage
600		961954	Rullo gabbia	Cage roller	Rouleau cage
13	911583	Braccio interno destro	Arm	Arm	Bras
14	099018	Gruppo parapolvere	Dust cover	Staubdeckel	Cache anti poussière
15	008005	Ingrassatore	Grease nipple	Fettbuechse	Graisneur
16	421604	Supporto	Support	Halterung	Support
17	003051	Cuscinetto	Bearing	Kugellager	Roulement
18	001006	Anello di arresto	Stop ring	Sperring	Bague d'arret
19	013019	Spina	Pin	Stift	Goupille
20	661403	Bussola	Bush	Buchse	Bague
21	014198	Vite	Screw	Schraube	Vis
500		998232	Rullo gabbia + Supporti	Cage roller + Support	Rouleau cage + Support
600		998234	Rullo gabbia + Supporti	Cage roller + Support	Rouleau cage + Support



RULLO PACKER Ø 555 SINISTRO • L.H. PACKER ROLLER Ø 555
 PACKERWALZE Ø 555 LINKS • ROULEAU PACKER Ø 555 GAUCHE



Tav. Tab. Taf.	362182	Rev.	00 0906
----------------------	---------------	------	----------------



RULLO PACKER Ø 555 SINISTRO • L.H. PACKER ROLLER Ø 555
PACKERWALZE Ø 555 LINKS • ROULEAU PACKER Ø 555 GAUCHE

Tav.
Tab.
Taf.

362182

Rev.

00 0906

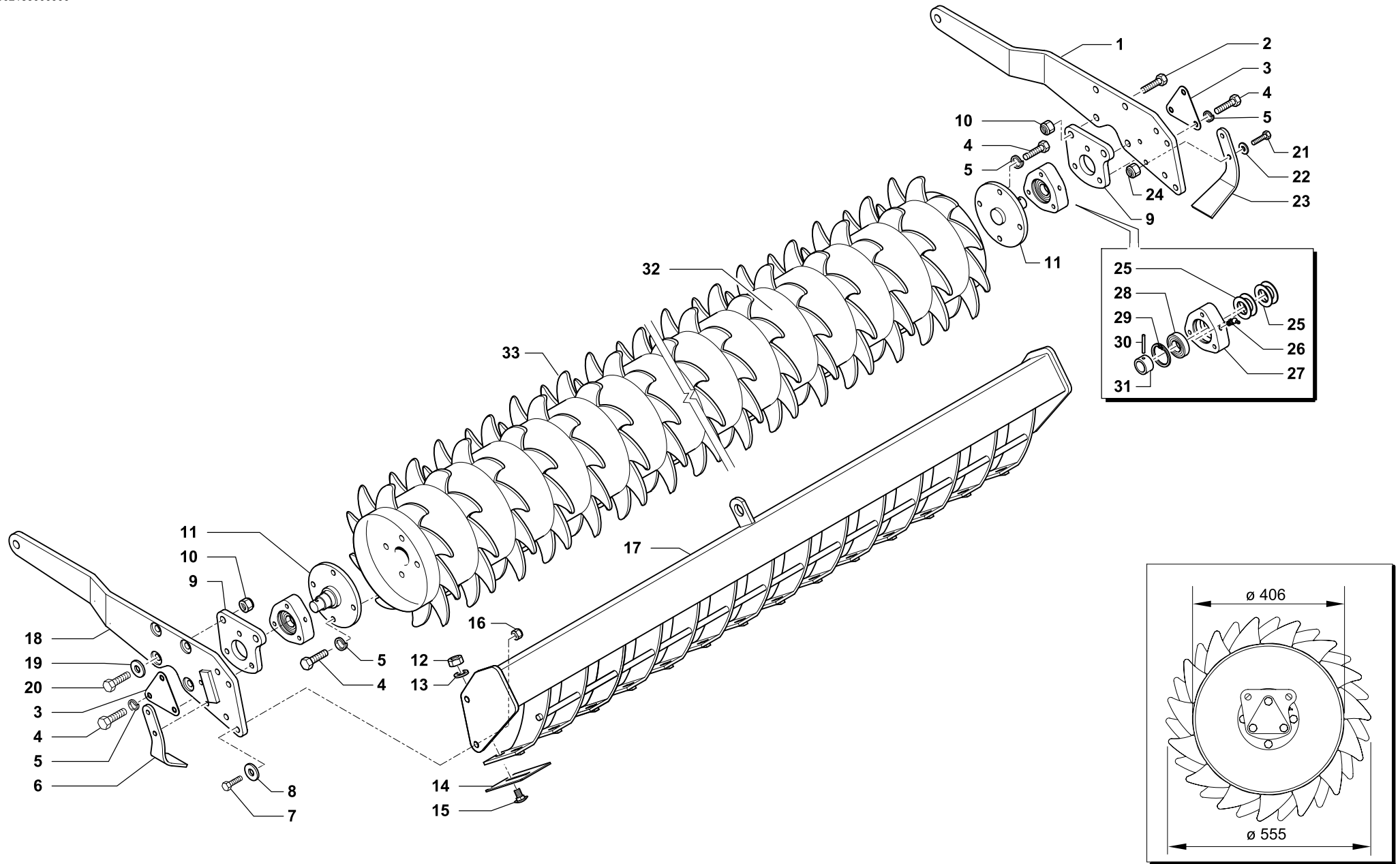
RIF.	N. CODICE	DENOMINAZIONE	DENOMINATION	BEZEICHNUNG	DENOMINATION
1	911572	Braccio esterno sinistro	Arm	Arm	Bras
2	014192	Vite	Screw	Schraube	Vis
3	612372	Chiusura	Plate	Plate	Platte
4	014145	Vite	Screw	Schraube	Vis
5	011003	Grower	Grower	Federscheibe	Grower
6	911629	Raschietto laterale SX	Scraper	Schaber	Racloir
7	014019	Vite	Screw	Schraube	Vis
8	010002	Rondella	Washer	Unterlegscheibe	Rondelle
9	661402	Piastra	Plate	Plate	Platte
10	004072	Dado	Nut	Mutter	Ecrou
11	661401	Fusello	Stub axle	Flansch	Fusee
12	004003	Dado	Nut	Mutter	Ecrou
13	011033	Grower	Grower	Federscheibe	Grower
14	911601	Raschietto	Scraper	Schaber	Racloir
15	014386	Vite	Screw	Schraube	Vis
16	004054	Dado	Nut	Mutter	Ecrou
500	961912	Barra porta raschietti	Scratcher support	Schaberhalter	Porte-racloir
600	961914	Barra porta raschietti	Scratcher support	Schaberhalter	Porte-racloir
18	911582	Braccio interno sinistro	Arm	Arm	Bras
19	010006	Rondella	Washer	Unterlegscheibe	Rondelle
20	014198	Vite	Screw	Schraube	Vis
21	014256	Vite	Screw	Schraube	Vis
22	010004	Rondella	Washer	Unterlegscheibe	Rondelle
23	911630	Raschietto laterale DX	Scraper	Schaber	Racloir
24	004084	Dado	Nut	Mutter	Ecrou
25	099018	Gruppo parapolvere	Dust cover	Staubdeckel	Cache anti poussière
26	008005	Ingrassatore	Grease nipple	Fettbuechse	Graisser
27	421604	Supporto	Support	Halterung	Support
28	003051	Cuscinetto	Bearing	Kugellager	Roulement
29	001006	Anello di arresto	Stop ring	Sperring	Bague d'arret
30	013019	Spina	Pin	Stift	Goupille
31	661403	Bussola	Bush	Buchse	Bague
500	961922	Rullo packer	Packer roller	Packerwalze	Rouleau packer



RULLO PACKER Ø 555 SINISTRO • L.H. PACKER ROLLER Ø 555
PACKERWALZE Ø 555 LINKS • ROULEAU PACKER Ø 555 GAUCHE

Tav. Tab. Taf.	362182	Rev.	00	0906
----------------------	---------------	------	-----------	-------------

RIF.	N. CODICE	DENOMINAZIONE	DENOMINATION	BEZEICHNUNG	DENOMINATION	
600	32	961924	Rullo packer	Packer roller	Packerwalze	Rouleau packer
	33	412782	Dente (da saldare)	Tine (to be welded)	Zahn (zum schweissen)	Dent (à souder)
500		998242	Rullo packer + Supporti	Packer roller + Support	Packerwalze + Halterung	Rouleau packer + Support
600		998244	Rullo packer + Supporti	Packer roller + Support	Packerwalze + Halterung	Rouleau packer + Support



RULLO PACKER Ø 555 DESTRO • R.H. PACKER ROLLER Ø 555
 PACKERWALZE Ø 555 RECHTS • ROULEAU PACKER Ø 555 DROITE



Tav. Tab. Taf.	362183	Rev.	00 0906
----------------------	---------------	------	----------------



RULLO PACKER Ø 555 DESTRO • R.H. PACKER ROLLER Ø 555
PACKERWALZE Ø 555 RECHTS • ROULEAU PACKER Ø 555 DROITE

Tav.
Tab.
Taf.

362183

Rev.

00 0906

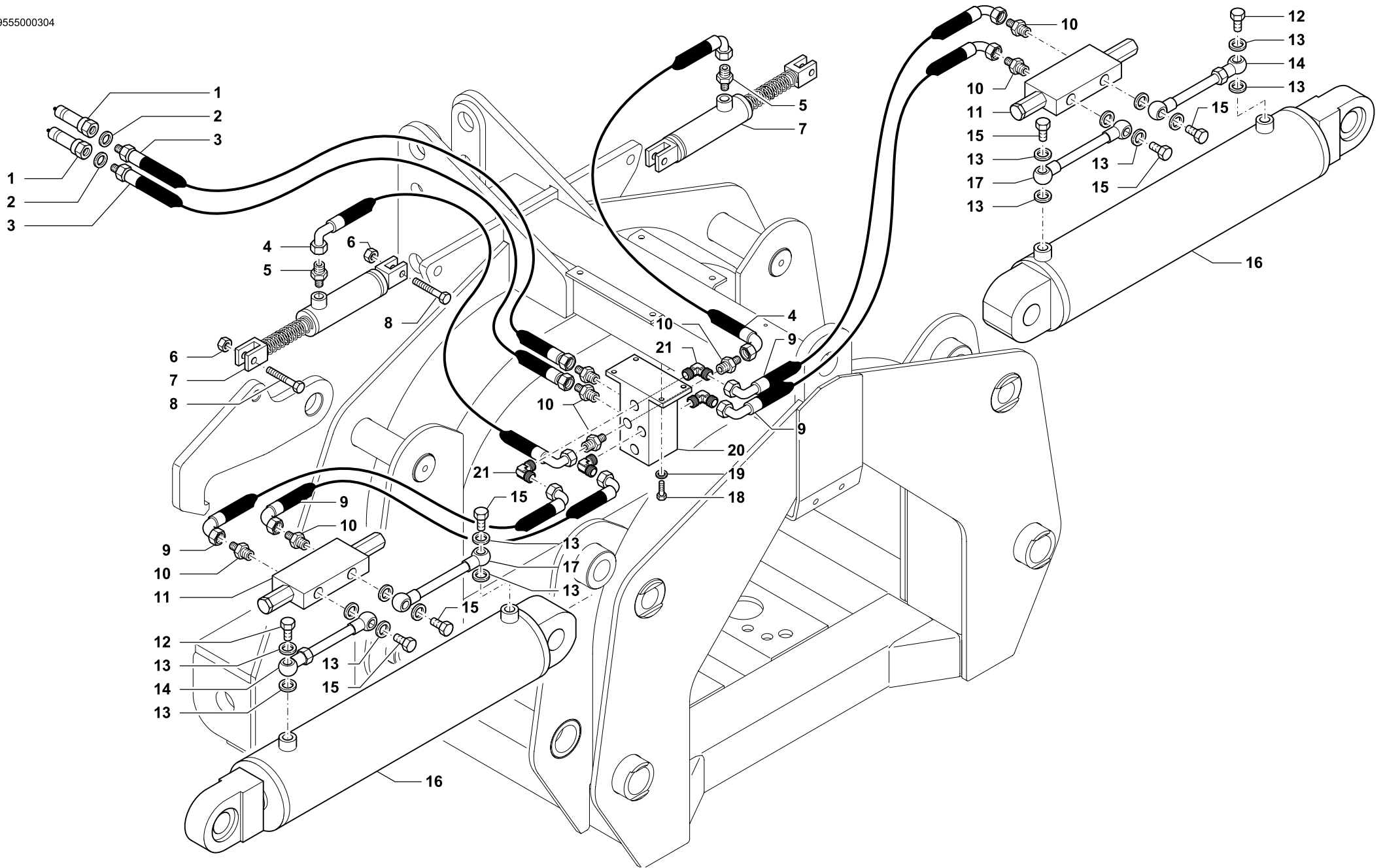
RIF.	N. CODICE	DENOMINAZIONE	DENOMINATION	BEZEICHNUNG	DENOMINATION
1	911573	Braccio esterno destro	Arm	Arm	Bras
2	014192	Vite	Screw	Schraube	Vis
3	612372	Chiusura	Plate	Plate	Platte
4	014145	Vite	Screw	Schraube	Vis
5	011003	Grower	Grower	Federscheibe	Grower
6	911629	Raschietto laterale SX	Scraper	Schaber	Racloir
7	014019	Vite	Screw	Schraube	Vis
8	010002	Rondella	Washer	Unterlegscheibe	Rondelle
9	661402	Piastra	Plate	Plate	Platte
10	004072	Dado	Nut	Mutter	Ecrou
11	661401	Fusello	Stub axle	Flansch	Fusee
12	004003	Dado	Nut	Mutter	Ecrou
13	011033	Grower	Grower	Federscheibe	Grower
14	911601	Raschietto	Scraper	Schaber	Racloir
15	014386	Vite	Screw	Schraube	Vis
16	004054	Dado	Nut	Mutter	Ecrou
500	961912	Barra porta raschietti	Scratcher support	Schaberhalter	Porte-racloir
600	961914	Barra porta raschietti	Scratcher support	Schaberhalter	Porte-racloir
18	911583	Braccio interno destro	Arm	Arm	Bras
19	010006	Rondella	Washer	Unterlegscheibe	Rondelle
20	014198	Vite	Screw	Schraube	Vis
21	014256	Vite	Screw	Schraube	Vis
22	010004	Rondella	Washer	Unterlegscheibe	Rondelle
23	911630	Raschietto laterale DX	Scraper	Schaber	Racloir
24	004084	Dado	Nut	Mutter	Ecrou
25	099018	Gruppo parapolvere	Dust cover	Staubdeckel	Cache anti poussière
26	008005	Ingrassatore	Grease nipple	Fettbuechse	Graisser
27	421604	Supporto	Support	Halterung	Support
28	003051	Cuscinetto	Bearing	Kugellager	Roulement
29	001006	Anello di arresto	Stop ring	Sperring	Bague d'arret
30	013019	Spina	Pin	Stift	Goupille
31	661403	Bussola	Bush	Buchse	Bague
500	961922	Rullo packer	Packer roller	Packerwalze	Rouleau packer



RULLO PACKER Ø 555 DESTRO • R.H. PACKER ROLLER Ø 555
PACKERWALZE Ø 555 RECHTS • ROULEAU PACKER Ø 555 DROITE

Tav. Tab. Taf.	362183	Rev.	00 0906
----------------------	---------------	------	----------------

RIF.	N. CODICE	DENOMINAZIONE	DENOMINATION	BEZEICHNUNG	DENOMINATION	
600	32	961924	Rullo packer	Packer roller	Packerwalze	Rouleau packer
	33	412782	Dente (da saldare)	Tine (to be welded)	Zahn (zum schweissen)	Dent (à souder)
500		998242	Rullo packer + Supporti	Packer roller + Support	Packerwalze + Halterung	Rouleau packer + Support
600		998244	Rullo packer + Supporti	Packer roller + Support	Packerwalze + Halterung	Rouleau packer + Support



IMPIANTO IDRAULICO SOLLEVAMENTO • HYDRAULIC SYSTEM FOR LIFTING
HYDRAULIKANLAGE • INSTALLATION HYDRAULIQUE DE SOULEVEMENT

Tav.	349555	Rev.	00 0304
Tab.			
Taf.			



IMPIANTO IDRAULICO SOLLEVAMENTO • HYDRAULIC SYSTEM FOR LIFTING
HYDRAULIKANLAGE • INSTALLATION HYDRAULIQUE DE SOULEVEMENT

Tav.
Tab.
Taf.

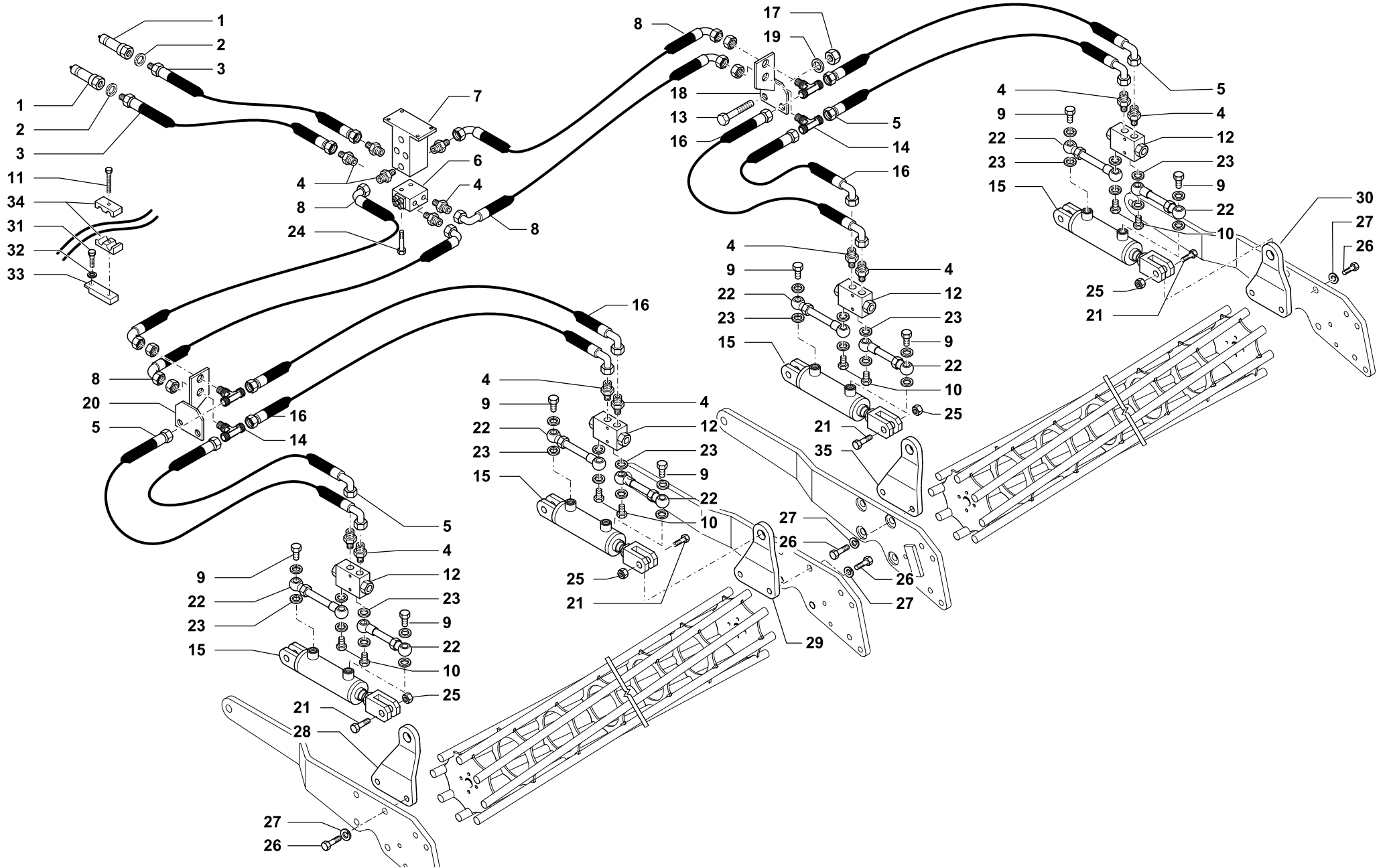
349555

Rev.

00

0304

RIF.	N. CODICE	DENOMINAZIONE	DENOMINATION	BEZEICHNUNG	DENOMINATION
1	022082	Innesto rapido	Shap-on coupling	Baionett kupplung	Joint a baionette
2	022087	Rosetta di rame	Washer	Unterlegscheibe	Rondelle
3	023178	Tubo	Hose	Schlauch	Tuyau
4	023119	Tubo	Hose	Schlauch	Tuyau
5	022130	Raccordo diritto	Connection	Anschluss	Raccord
6	004072	Dado	Nut	Mutter	Ecrou
7	671777	Martinetto completo	Complete jack	Komplette winde	Vérin complet
8	014192	Vite	Screw	Schraube	Vis
9	023184	Tubo	Hose	Schlauch	Tuyau
10	022129	Raccordo diritto	Connection	Anschluss	Raccord
11	021058	Valvola di blocco	Stop valve	Sperrventil	Suopape d'arret
12	022175	Vite strozzata	Screw	Schraube	Vis
13	022086	Rosetta di rame	Washer	Unterlegscheibe	Rondelle
14	621740	Tubo valvola	Hose	Schlauch	Tuyau
15	022070	Vite cava	Screw	Schraube	Vis
16	671816	Martinetto completo	Complete jack	Komplette winde	Vérin complet
17	621721	Tubo valvola	Hose	Schlauch	Tuyau
18	014032	Vite	Screw	Schraube	Vis
19	010015	Rondella	Washer	Unterlegscheibe	Rondelle
20	462265	Blocchetto ripartitore	Connection block	Kontrolmechanismus	Distributeur
21	022120	Raccordo 90°	Connection	Anschluss	Raccord



IMPIANTO IDRAULICO SOLLEVAMENTO RULLI • HYDRAULIC SYSTEM FOR ROLLER LIFTING
 HYDRAULISCHE ANLAGE FÜR WALZE BETEETIGUNG • INSTALLATION HYDRAULIQUE REGLAGE ROULEAUX

Tav. Tab. Taf.	362584	Rev.	00 0906
----------------------	---------------	------	----------------



IMPIANTO IDRAULICO SOLLEVAMENTO RULLI • HYDRAULIC SYSTEM FOR ROLLER LIFTING
HYDRAULISCHE ANLAGE FÜR WALZE BETEETIGUNG • INSTALLATION HYDRAULIQUE REGLAGE ROULEAUX

Tav.
Tab.
Taf. **362584**

Rev. **00 0906**

RIF.	N. CODICE	DENOMINAZIONE	DENOMINATION	BEZEICHNUNG	DENOMINATION	
	1	022082	Innesto rapido	Shap-on coupling	Baionett kupplung	Joint a baionette
	2	022087	Rosetta di rame	Washer	Unterlegscheibe	Rondelle
	3	023178	Tubo	Hose	Schlauch	Tuyau
	4	022129	Raccordo	Connection	Anschluss	Raccord
500	5	023152	Tubo	Hose	Schlauch	Tuyau
600		023152	Tubo	Hose	Schlauch	Tuyau
	6	021073	Divisore di flusso	Flow divider	Flussteiler	Diviseur de flux
	7	662528	Blocchetto ripartitore	Connection block	Kontrolmechanismus	Distributeur
	8	023153	Tubo	Hose	Schlauch	Tuyau
	9	022070	Vite cava	Screw	Schraube	Vis
	10	022175	Vite strozzata	Screw	Schraube	Vis
	11	014070	Vite	Screw	Schraube	Vis
	12	021094	Valvola di blocco	Stop valve	Sperrventil	Suopape d'arret
	13	014176	Vite	Screw	Schraube	Vis
	14	022178	Raccordo T	Connection	Anschluss	Raccord
	15	671815	Martinetto completo	Complete jack	Komplette winde	Vérin complet
	16	023152	Tubo	Hose	Schlauch	Tuyau
	17	004054	Dado	Nut	Mutter	Ecrou
	18	661558	Supporto valvola	Support	Halterung	Support
	19	010002	Rondella	Washer	Unterlegscheibe	Rondelle
	20	661557	Supporto passaparatia sx	Support	Halterung	Support
	21	014221	Vite	Screw	Schraube	Vis
	22	621718	Tubo valvola	Hose	Schlauch	Tuyau
	23	022086	Rosetta di rame	Washer	Unterlegscheibe	Rondelle
	24	014122	Vite	Screw	Schraube	Vis
	25	004072	Dado	Nut	Mutter	Ecrou
	26	014200	Vite	Screw	Schraube	Vis
	27	011008	Grower	Grower	Federscheibe	Grower
	28	623358	Attacco esterno sinistro	L.H. hitch	L.H. kupplung	Attelage gauche
	29	623398	Attacco interno sinistro	Hitch	Kupplung	Attelage
	30	623359	Attacco esterno destro	R.H. hitch	R.H. kupplung	Attelage droite
	31	014149	Vite	Screw	Schraube	Vis
	32	011012	Rondella	Washer	Unterlegscheibe	Rondelle



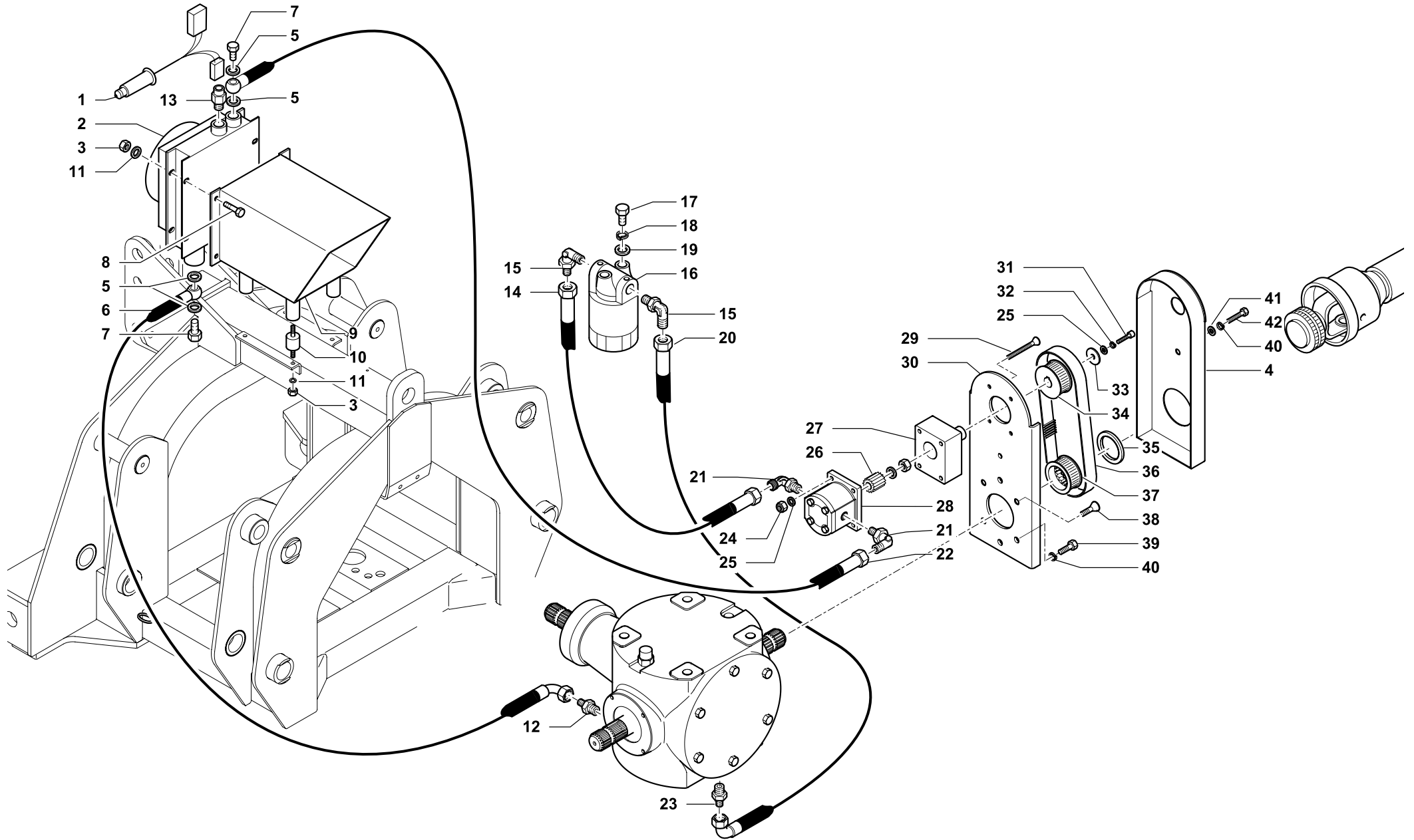
IMPIANTO IDRAULICO SOLLEVAMENTO RULLI • HYDRAULIC SYSTEM FOR ROLLER LIFTING
HYDRAULISCHE ANLAGE FÜR WALZE BETEETIGUNG • INSTALLATION HYDRAULIQUE REGLAGE ROULEAUX

Tav.
Tab.
Taf. **362584**

Rev. **00**

0906

RIF.	N. CODICE	DENOMINAZIONE	DENOMINATION	BEZEICHNUNG	DENOMINATION
33	612658	Staffa supporto collare	Bracket	Tragbuegel	Support collier
34	022143	Collare fermatubo	Collar	Bund	Collier
35	623397	Attacco interno destro	Hitch	Kupplung	Attelage



KIT DI RAFFREDDAMENTO • COOLING KIT
 KUEHLUNGSKIT • KIT DE REFRROIDISSEMENT

Tav. Tab. Taf.	350561	Rev.	00 0304
----------------------	---------------	------	----------------



KIT DI RAFFREDDAMENTO • COOLING KIT
KUEHLUNGSKIT • KIT DE REFROIDISSEMENT

Tav.
Tab.
Taf.

350561

Rev.

00

0304

RIF.	N. CODICE	DENOMINAZIONE	DENOMINATION	BEZEICHNUNG	DENOMINATION
1	027001	Cavo alimentazione	Cable	Kabel	Cable
2	021055	Scambiatore	Exchange	Waermeaustauscher	Echangeur
3	004055	Dado	Nut	Mutter	Ecrou
4	461090	Coperchio carter	Cover	Deckel	Couvercle
5	022087	Rondella	Washer	Unterlegscheibe	Rondelle
6	023182	Tubo	Hose	Schlauch	Tuyau
7	022030	Vite forata	Capstan screw	Lochschraube	Vis trouee
8	014001	Vite	Screw	Schraube	Vis
9	661110	Convogliatore	Air duct	Kühlerhaube	Convoyeur d'air
10	099124	Puffer	Screw shock absorber	Pufferfeder	Ammortisseur
11	010023	Rondella	Washer	Unterlegscheibe	Rondelle
12	022223	Raccordo	Connection	Anschluss	Raccord
13	021061	Termostato	Thermostat	Thermostat	Thermostat
14	023115	Tubo	Hose	Schlauch	Tuyau
15	022119	Raccordo	Connection	Anschluss	Raccord
16	021052	Filtro	Filter	Filer	Filtre
17	014005	Vite	Screw	Schraube	Vis
18	011001	Grower	Grower	Federscheibe	Grower
19	010023	Rondella	Washer	Unterlegscheibe	Rondelle
20	023175	Tubo	Hose	Schlauch	Tuyau
21	022120	Raccordo	Connection	Anschluss	Raccord
22	023130	Tubo	Hose	Schlauch	Tuyau
23	022222	Raccordo	Connection	Anschluss	Raccord
24	004083	Dado	Nut	Mutter	Ecrou
25	010015	Rondella	Washer	Unterlegscheibe	Rondelle
26	021079	Semigiunto	Hub	Moyeu	Nabe
27	021078	Supporto	Support	Halterung	Support
28	021051	Pompa	Pump	Pumpe	Pompe
29	014393	Vite	Screw	Schraube	Vis
30	421535	Supporto carter	Support	Halterung	Support
31	014306	Vite	Screw	Schraube	Vis
32	011009	Grower	Grower	Federscheibe	Grower
33	010035	Rondella	Washer	Unterlegscheibe	Rondelle



**KIT DI RAFFREDDAMENTO • COOLING KIT
KUEHLUNGSKIT • KIT DE REFROIDISSEMENT**

Tav.
Tab.
Taf.

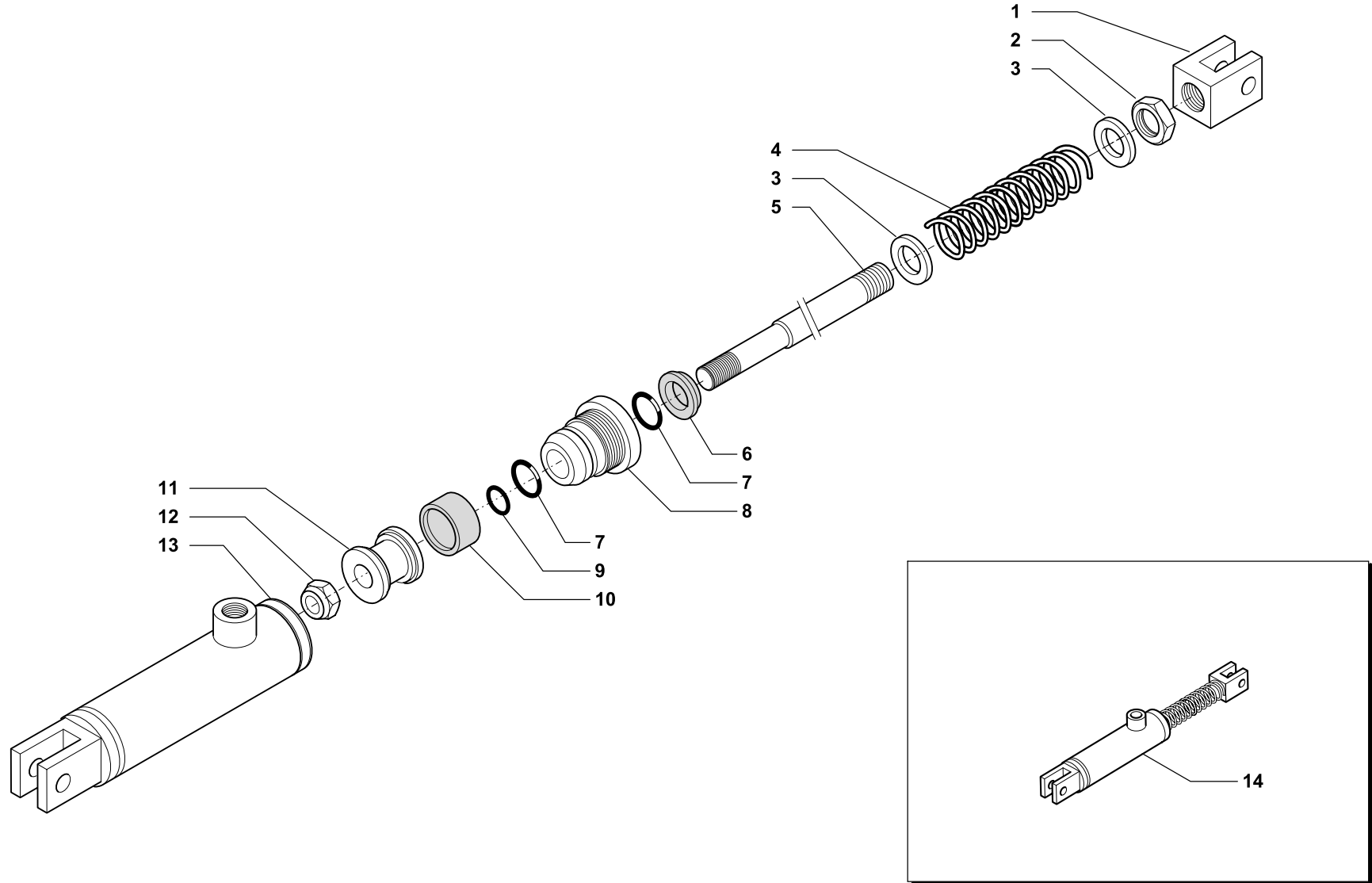
350561

Rev.

00

0304

RIF.	N. CODICE	DENOMINAZIONE	DENOMINATION	BEZEICHNUNG	DENOMINATION
34	423605	Puleggia superiore	Pulley	Riemenscheibe	Poulie
35	223405	Spessore	Spacer	Distanzstueck	Entretoise
36	021083	Cinghia	Trasmission belt	Gurt	Courroie
37	423606	Puleggia inferiore	Pulley	Riemenscheibe	Poulie
38	014320	Vite	Screw	Schraube	Vis
39	014007	Vite	Screw	Schraube	Vis
40	011032	Grower	Grower	Federscheibe	Grower
41	010004	Rondella	Washer	Unterlegscheibe	Rondelle
42	014026	Vite	Screw	Schraube	Vis





MARTINETTO AZIONAMENTO GANCIO DI BLOCCAGGIO • BLOCKING HOOK COMMANDING JACK
SPERREHACKEN ANTRIEB WINDE • VERIN CROCHET DE BLOPAGE

Tav.
Tab.
Taf.

124206

Rev.

01

0699

RIF.	N. CODICE	DENOMINAZIONE	DENOMINATION	BEZEICHNUNG	DENOMINATION
1	623611	Forcella filettata	Fork	Gabelstueck	Fourche
2	004040	Dado	Nut	Mutter	Ecrou
3	010006	Rondella	Washer	Unterlegscheibe	Rondelle
4	423557	Molla	Spring	Feder	Ressort
5	623810	Stelo	Rod	Spindel	Tige
6	007198	Guarnizione	Gasket	Dichtring	Joint
7	007196	Guarnizione	Gasket	Dichtring	Joint
8	623809	Guida stelo	Stem guide	Schaftsführung	Guide axe
9	007197	Guarnizione	Gasket	Dichtring	Joint
10	007191	Guarnizione	Gasket	Dichtring	Joint
11	623808	Pistone	Piston	Kolben	Piston
12	004087	Dado	Nut	Mutter	Ecrou
13	662544	Tubo	Hose	Schlauch	Tuyau
14	671777	Martinetto completo	Complete jack	Komplette winde	Vérin complet